



Kernel for Word

“Opt the Easiest Way to Rebuild and Repair
Corrupt Word Document Files”

PRODUCT GUIDE

Table of Contents

1.1	Using this Manual	4
1.1.1	List of Abbreviations	4
1.2	About Kernel for Word	5
1.4	Who Should Use this Software?	5
2.1	Installation Prerequisites	7
2.1.1	Hardware Requirements:	7
2.1.2	Software Requirements	7
2.1.2.1	Operating System Requirements	7
2.1.2.2	MS Office Version Requirements	8
2.2	Downloading Kernel for Word for the First Time	9
2.3	Install Kernel for Word	9
2.4	Start Kernel for Word	9
2.5	Uninstall Kernel for Word	9
3.1	Menu-bar	11
3.1.1	File Menu	11
3.1.2	Help Menu	12
3.2	Tool-bar	13
10.1	Requirement of Full Version	18
10.2	Purchasing Full Version	18
12.1	Common Issues	20
12.2	Frequently Asked Questions	20
13.1	Copyright	21
13.2	Trademark	21
13.3	Disclaimer	21
13.4	License Agreement	22

Table of Figures

Figure 3.1.1 File Menu	11
Figure 3.1.2 Help Menu	12
Figure 3.2.1 Main Window	14
Figure 3.2.2 Add Files dialogue box	15
Figure 3.2.3 Selected Word Files	15
Figure 3.2.4 Browse for Folder	16
Figure 3.2.5 Repair Progress	17
Figure 3.2.6 Saving Done	17

1. About Kernel for Word

Welcome to the user manual for Kernel for Word, the most effective and convenient .doc file repair tool available that repairs corrupt MS Office Word documents. This user manual comprises step by step guidelines on using Kernel for Word.

1.1 Using this Manual

This user manual is intended to guide users on using Kernel for Word. We suggest that first-time users read this user manual completely and carefully before proceeding with the software. However, if you are an experienced user, you can use the table of contents to find out information pertaining to the tasks that you need to perform by using Kernel for Word. You can use the table of contents to navigate through different sections of this user manual. The table of contents lists all the sections that are contained in this user manual in chronological order. The user manual comprises the following sections:

- Introduction
- Getting Started
- Software Interface
- Repairing .DOC files
- Full Version
- Support
- Troubleshooting
- Legal Notices

1.1.1 List of Abbreviations

Certain abbreviations have been used throughout this manual. For clear understanding of the contents of this user manual, please go through the list of abbreviations, mentioned below, before reading the manual.

DOC: Word Document File

MS: Microsoft



RAM: Random Access Memory

MB: Mega-Byte

GB: Giga-Byte

1.2 About Kernel for Word

Kernel for Word is file repair software for MS Office Word documents. This software repairs MS Office Word document files that become inaccessible due to unexpected system shutdown, bad sectors in the disk, error opening file, power failure, virus attacks, media errors, etc. You might be familiar with the following error messages if you have encountered MS Office Word .doc file corruption before:

- The document name or path is not valid
- Check the file permissions for the document or drive
- General Input/output error
- The file could not be repaired therefore, cannot be reopened

Kernel for Word quickly and effectively resolves the above mentioned errors by repairing corrupt .doc file, keeping the complete document format intact. It restores tables, bullets, embedded images, headers, footers, font style, hyperlinks, OLE objects and all other components of the corrupt Word document.

1.3 Salient Features

Salient features of Kernel for Word include:

- Efficient repair algorithms to quickly repair even heavy files
- Supports almost all versions of MS Office Word for recovery
- User friendly graphical user interface, can be operated by anyone
- Supports Rich Text Format (RTF)
- Free demo to test the capabilities of the tool before purchasing it

1.4 Who Should Use this Software?

The capability of Kernel for Word to repair large sized .doc files makes it appropriate for use by professionals or home users who keep their important data stored in MS Office Word documents. Software is also suitable for other MS Office Word users who have lost their important data stored in .doc



files due to .doc file corruption. This corruption could have been caused due to virus attacks, improper system shutdown, installation of unsupported software, media corruption, etc.

2. Getting Started

Now that you have understood the features and potential of Kernel for Word, you are ready to get hands on experience with the software. To start repairing .doc files, you will first need to download and install this software. It is strongly recommended that before installing Kernel for Word, you should go through the installation prerequisites for the software so that it can be assured that your computer is appropriately configured to run the software.


2.1 Installation Pre-requisites

The various prerequisites for installing and running Kernel for Word can be broadly classified into two major categories – Hardware requirements and Software requirements.

2.1.1 Hardware Requirements:

The hardware requirements for installing the software are as follows:

- Pentium Class Processor
- Minimum 64MB RAM (128 MB recommended)
- 10MB for Software installation
- Disk Space - Enough space to store the repaired files

 You should have at-least 10 MB of free disk space if you want to repair and save a 10 MB.doc file.

2.1.2 Software Requirements:

The software requirements for installing the software can further be grouped into two categories – Operating system requirements and MS Office version requirements.

2.1.2.1 Operating System Requirements

Supported operating systems:



- Windows 11
- Windows 10
- Windows 8
- Windows 7
- Windows Vista
- Windows XP
- Windows 2003
- Windows 2000

2.1.2.2 MS Office Version Requirements


Supported MS Office versions:

- MS Word 2021
- MS Word 2019
- MS Word 2016
- MS Word 2013
- MS Word 2010
- MS Word 2007
- MS Word 2003
- MS Word 2002
- MS Word 2000
- MS Word 97

2.2 Downloading Kernel for Word for the First Time

After checking your computer with the prescribed system requirements for Kernel for Word, you can download and install the software on your computer. You can buy the full version of the software from any one of our authorized resellers– Element5, Asknet and 2CO. If you want to try using Kernel for Word before buying it, you can download the evaluation version from the following link:

<https://www.nucleustechnologies.com/repair-word-file.html>

 You can repair .doc files saved on your system by using the evaluation version of Kernel for Word; however, the repaired file will not be saved. To save the repaired DOC file you need to buy the Full version of the software.

2.3 Install Kernel for Word

After downloading the installer file for Kernel for Word, you can install the software by running the file. To install Kernel for Word:

1. Double-click the Kernel for Word installer.
2. Follow the on-screen instructions. When the software is installed correctly, **Setup Installation Complete** screen will be displayed.
3. Click **Finish** to launch the software.

2.4 Start Kernel for Word

To start Kernel for Word:

Click the **Start** → **All Programs** → **Kernel for Word**

Alternatively, you can launch Kernel for Word by double-clicking the shortcut icon available on the desktop and Quick Launch icon.

2.5 Uninstall Kernel for Word



You may need to uninstall and re-install Kernel for Word. You can uninstall Kernel for Word in two different ways:


Uninstall from the Windows Start menu

To uninstall Kernel for Word with Start menu:

1. Click the **Start → All Programs → Kernel for Word → Uninstall Kernel for Word**

A warning message will be displayed.

2. Click '**Yes**' to uninstall Kernel for Word.

 Before proceeding to uninstall Kernel for Word, you must ensure that the software is not running.

Uninstall from Control Panel

You can alternatively uninstall Kernel for Word from the **Control Panel** by performing the following steps:

1. Click the **Start Menu →** search & open **Control Panel** and then double click the **Add or Remove Programs** icon.

2. Select **Kernel for Word** and click **Remove**.

A warning message will be displayed.

3. Click '**Yes**' to uninstall Kernel for Word.



3. Software Interface

Now that Kernel for Word has been installed on your computer, you can start using the software after getting acquainted with the software interface.

3.1 Menu-bar

The menu-bar of Kernel for Word comprises two main menus – File and Help.

3.1.1 File Menu

The **File** menu comprises three menu items.



Figure 3.1.1 File Menu

Menu items in the File menu:

Field Name	Field Description
Add Files(s)	To select and add the Word file(s) that you want to repair
Repair Files(s)	To start the repairing process
Exit	To close the software

3.1.2 Help Menu

The **Help** menu comprises two menu items.

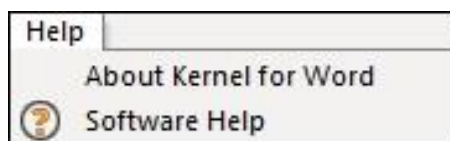








Figure 3.1.2 Help Menu

Menu items in the Help menu:

Field Name	Field Description
About Kernel Word	To view version-related and support information of Kernel for Word
Help	To get the help guide of the software

3.2 Tool-bar

The tool-bar in Kernel for Word is displayed below the menu-bar. The tool-bar provides a convenient and user-friendly method to perform certain actions that can also be performed by using the menu-bar. Read the information in the table below to find out more details about the tool-bar buttons:

Button	Button Name	Button Description
	Add Files	To browse and list corrupt .doc files stored on your system
	Repair Files	To repair selected file(s)
	Remove Selected	To remove the selected Word file from the list
	Remove All	To remove all Word files from the list
	Help	To open the software help manual
	Buy Online	To navigate to the tool's buy page

4. Repairing .DOC Files

Now that you have complete familiarity of the user interface of Kernel for Word, you are ready to repair .doc files. To repair .doc files:

1. Launch Kernel for Word.

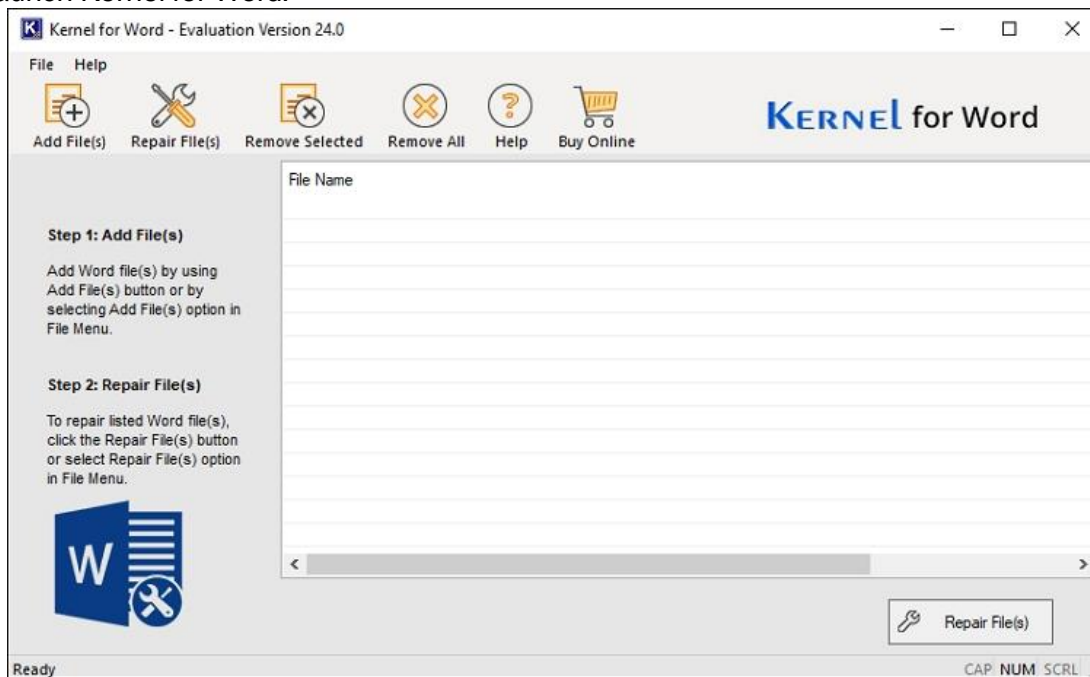


Figure 3.2.1 Main Window

2. Click the **Add Files** button to browse and list corrupt DOC files.

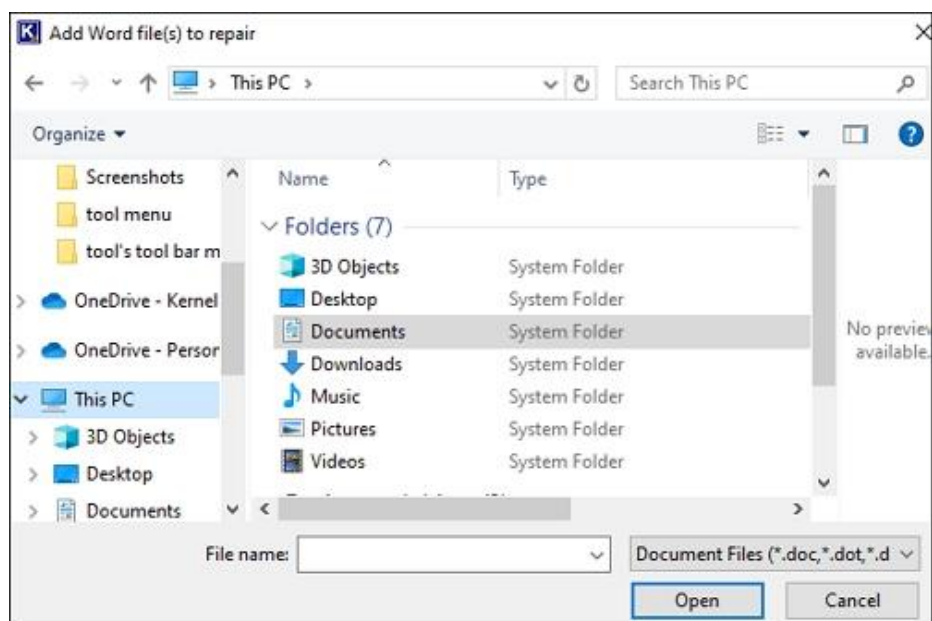


Figure 3.2.2 Add Files dialogue box

3. Select file(s) to repair and click the **Open** button. Selected file(s) will be listed in software:

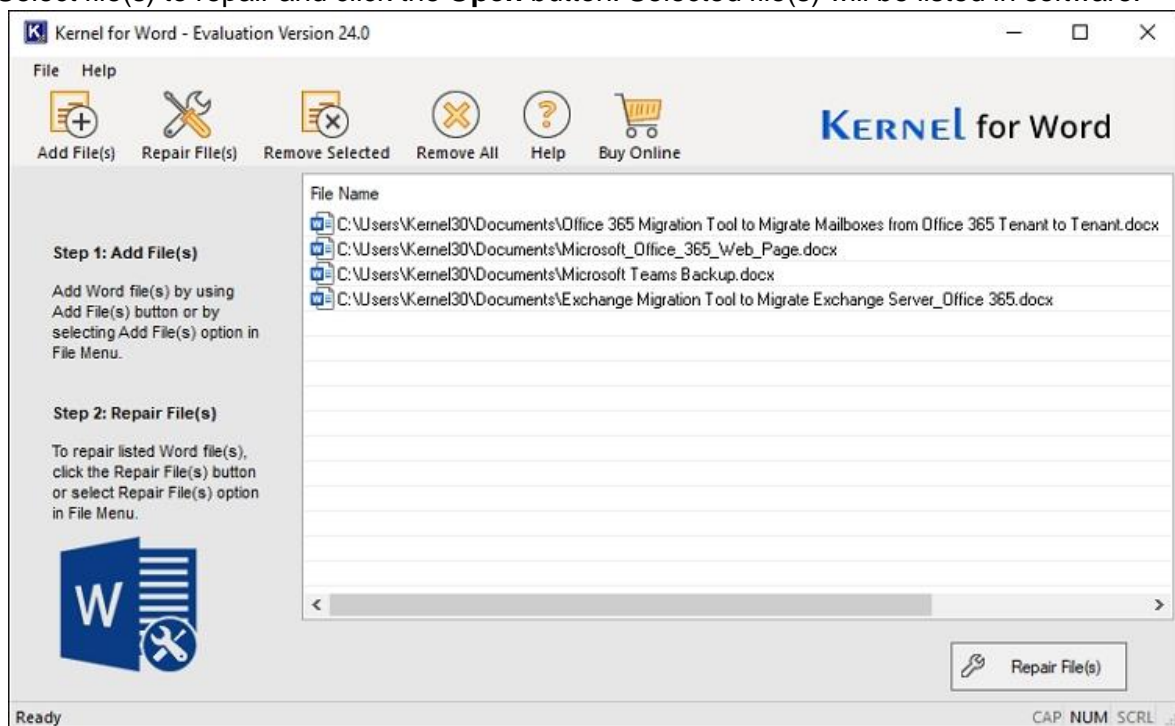


Figure 3.2.3 Selected Word Files

✎ You can select multiple .doc files to repair them in one repair cycle. You can remove any file from the list by selecting the file from the list and clicking **Remove Selected**. To remove all the files from the list, use **Remove All**.

4. Click the **Repair File(s)** button to move ahead in the repairing process. The "Browse for Folder" dialog box appears:

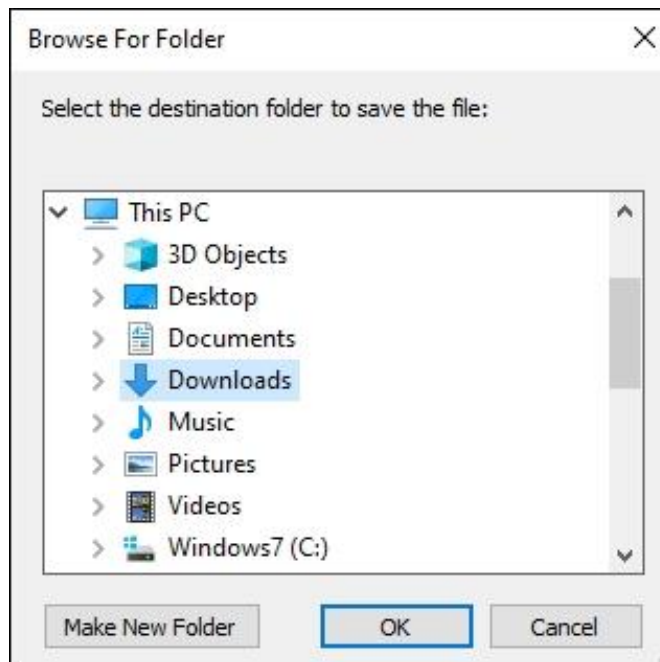


Figure 3.2.4 Browse for Folder

✎ Before clicking the **Repair File(s)** button, make sure that none of the Microsoft Word's instance is running. If any of the MS Word's instance will be running, Kernel for Word displays the "**Please, close all MS Word instance(s) before continuing the repairing process.**" message to let you inform that the repairing process could not be continued because one or more of the MS Word's instances are running.

5. Specify a location to save the repaired Word file(s) and click the **OK** button. As you click the **OK** button, the software starts repairing the listed Word file(s):

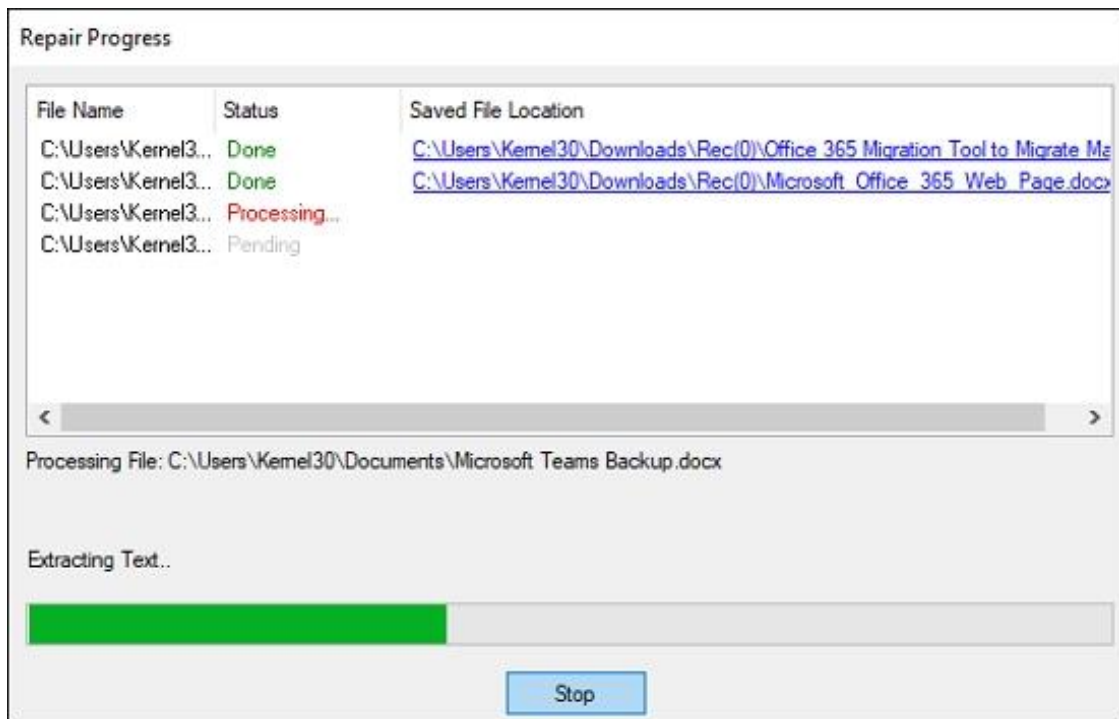


Figure 3.2.5 Repair Progress

Click the **Stop** button to terminate the repairing process in between.

- You will get a pop-up when process completes. Click the **OK** button to close the dialog box. The tool displays link of the locations where the repaired files are saved. On clicking those links, the repaired files can be accessed immediately.

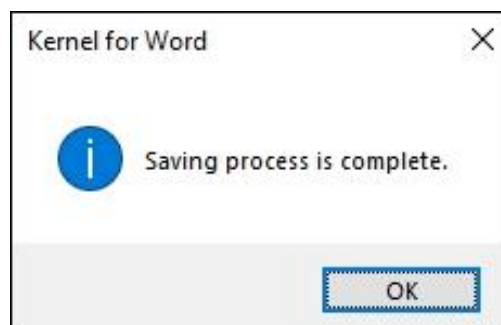


Figure 3.2.6 Saving Done

10. Full Version

Although you can use Kernel for Word evaluation version for free and experience the capabilities of the software but there are certain features that are not available in the evaluation version.

10.1 Requirement of Full Version

By using the evaluation version of Kernel for Word, you can repair corrupt .doc files; however, you cannot save the repaired files. You will need to buy the full version of the software to proceed with the saving process.

10.2 Purchasing Full Version

You can buy the full version of Kernel for Word from any one of our authorized resellers – Element5, Asknet and 2CO. As soon the purchase transaction with our resellers gets completed, our sales team will send you an email comprising the URL to download the full version of Kernel for Word and activation details of the software.



11. Support

We have an extensive and efficient support system in place to assist our customers with all issues related to using Kernel for Word. The software comes with an embedded help manual that can be accessed by clicking **Help→Software Help** in the menu-bar.

You can also press the F1 key on the keyboard of your computer to access the embedded help of Kernel for Word.

We also have live support wherein you can chat with our software experts at <https://www.nucleustechnologies.com/supportcenter/>

To talk on phone with our software experts call: **Help line:** +91-9818725861
1-866-348-7872 (Toll Free for US/CANADA)

You can also email us about your queries at:

sales@nucleustechnologies.com for Sales

support@nucleustechnologies.com for Support

contact@nucleustechnologies.com for General Queries



12. Troubleshooting

This section deals with your generic and specific queries pertaining to using Kernel for Word.

12.1 Common Issues

Why does Kernel for Word have limitations in evaluation copy? The free evaluation version of Kernel for Word is intended to enable you to experience the capabilities of the software. You will need to buy the software to save the repaired files.

12.2 Frequently Asked Questions

How to Buy Kernel for Word?

You can buy Kernel for Word online at <https://www.nucleustechnologies.com/Buy-Word-Document-Repair-Software.php>

I have multiple Word files with severe corruption, can the tool repair them?

Yes, the tool's robust algorithms can easily repair damage of any level within the Word files, also you can add single or multiple files at once to repair.

Can it recover deleted Word files from my hard drive?

No, Kernel Word is a **File Repair Software**, it can only repair corrupt files. To recover your deleted Word file use Kernel for FAT + NTFS - Data Recovery Software

I have lost my full version for Kernel for Word. Can you help me?

Please email us at sales@nucleustechnologies.com. Please include your name, address, email address, and order confirmation number (if you have it). We will be happy to help you.

How can I upgrade the software?

To upgrade the software you have to send an email to sales@nucleustechnologies.com. Please include your name, address, email address, order confirmation number and the name of the software upgraded to.



Would I get an invoice for my purchase?

Yes, we provide every customer with a soft copy of the invoice. This is sent on the same day, on the provided email.

13. Legal Notices

This section comprises the legal specification about Kernel for Word and the company KernelApps Private Limited

13.1 Copyright

KernelApps Private Limited, Kernel accompanied user manual and documentation are copyright of KernelApps Private Limited, with all rights reserved. Under the copyright laws, this user manual cannot be reproduced in any form without the prior written permission of KernelApps Private Limited. No Patent Liability is assumed, however, with respect to the use of the information contained herein. © KernelApps Private Limited. All rights reserved.

13.2 Trademark

Kernel ® is a copyright work of KernelApps Private Limited Windows 95®, Windows 98®, Windows ME®, Windows NT®, Windows 2000 Server®, Windows 2000 Advanced Server®, Windows 2003 Server®, Windows XP®, Windows Vista, MS-DOS and Open Office are registered trademarks of Microsoft Corporation and Sun Microsystems, Inc. All other brand and product names are trademarks or registered trademarks of their respective companies.

13.3 Disclaimer

The Information contained in this manual, including but not limited to any product specifications, is subject to change without notice. KernelApps Private Limited provides no warranty with regard to this manual or any other information contained herein and here by expressly disclaims any implied warranties of merchantability or fitness for any particular purpose with regard to any of the foregoing KernelApps Private Limited assumes no liability for any damages incurred directly or indirectly from any technical or typographical errors or omissions contained herein or for discrepancies between the product and the manual. In no event shall KernelApps Private Limited, be liable for any incidental, consequential special, or exemplary damages, whether based on tort, contract or otherwise, arising out of or in connection with this manual or any other information contained herein or the use thereof.



13.4 License Agreement

Kernel for Word Copyright © by KernelApps Private Limited **Your Agreement to this License**

You should carefully read the following terms and conditions before using, installing or distributing this software, unless you have a different license agreement signed by KernelApps Private Limited. The terms and conditions of this License describe the permitted use and users of each Licensed Copy of Kernel for Word. For purposes of this License, if you have a valid license, you have the right to use a single Licensed Copy of Kernel.

Scope of License Each Licensed Copy of Kernel for Word may either be used by a single person or used non-simultaneously by multiple people who use the software personally installed on a single workstation. All rights of any kind in Kernel, which are not expressly granted in this License, are entirely and exclusively reserved to and by KernelApps Private Limited. You may not rent, lease, modify, translate, reverse engineer, decompile, disassemble, or create derivative works based on, Kernel, nor permit anyone else to do so. You may not make access to Kernel available to others in connection with a service bureau, application service provider, or similar business, nor permit anyone else to do so. **Warranty Disclaimers and Liability Limitations** Kernel for Word, and any and all accompanying software, files, data and materials, are distributed and provided AS IS and with no warranties of any kind, whether expressed or implied. In particular, there is no warranty for the quality of data recovered. You acknowledge that good data processing procedure dictates that any program, including Kernel, must be thoroughly tested with non-critical data before there is any reliance on it, and you hereby assume the entire risk of all use of the copies of Kernel covered by this License. This disclaimer of warranty constitutes an essential part of this License. In addition, in no event does KernelApps Private Limited authorize you or anyone else to use Kernel for Word in applications or systems where Kernel for Word failure to perform can reasonably be expected to result in a significant physical injury, or in loss of life. Any such use is entirely at your own risk, and you agree to hold KernelApps Private Limited harmless from any and all claims or losses relating to such unauthorized use. **General** This License is the complete statement of the agreement between the parties on the subject matter, and merges and supersedes all other or prior understandings, purchase orders, agreements and arrangements. This License shall be governed by the laws of the State of Delhi. Exclusive jurisdiction and venue for all matters relating to this License shall be in courts and for a located in the State of Delhi, and you consent to such jurisdiction and venue. There are no third party beneficiaries of any promises, obligations or representations made by KernelApps Private Limited herein. Any waiver by KernelApps Private Limited of any violation of this License by you shall not constitute, nor contribute to, a waiver by KernelApps Private Limited of any other or future violation of the same provision, or any other provision, of this License.

