



# Kernel for Deleted File Recovery

---

“Effortless Way to Recover Permanently Deleted Data”

## PRODUCT GUIDE

# Table of Contents

---

1.	Introduction to Kernel Undelete .....	5
1.1	Using this Manual .....	5
1.2	About Kernel Undelete .....	6
1.3	Salient Features .....	6
1.4	Who Should Use this Software? .....	6
2.	Getting Started .....	7
2.1	Installation Pre-requisites.....	7
2.2	Downloading Kernel Undelete for the First Time .....	8
2.3	Install Kernel Undelete .....	8
2.4	Start Kernel Undelete.....	8
2.5	Uninstall Kernel Undelete.....	9
3.	Software Interface .....	10
3.1	Menu-bar.....	10
3.2	Tool-bar.....	12
3.3	Buttons Used.....	14
4.	Recovering Deleted Files .....	15
4.1	How to recover deleted files?.....	15
4.2	Stop and Resuming Recovery Process.....	17
5.	Full Version .....	19
5.1	Requirement of Full Version.....	19
5.2	Purchasing Full Version.....	19
6.	Support.....	20
7.	Troubleshooting .....	21
7.1	Common Issues .....	21
7.2	Frequently Asked Questions .....	21
8.	Legal Notices .....	22
8.1	Copyright .....	22
8.2	Trademark .....	22
8.3	Disclaimer .....	22

8.4	License Agreement .....	22
-----	-------------------------	----

# Table of Figures

---

Figure 3.1: Recovery Menu ..... 10

Figure 3.2: View Menu ..... 11

Figure 3.3: Tools Menu..... 11

Figure 3.4: Help Menu ..... 12

Figure 4.1: Main Window showing all physical disks ..... 15

Figure 4.2: Scanning Process ..... 16

Figure 4.3: Files Found ..... 17

# 1. Introduction to Kernel Undelete

---

Welcome to the user manual for Kernel Undelete, the most effective and convenient data recovery tool available that recovers Windows operating system deleted files. This user manual comprises step by step guidelines on using Kernel Undelete.

## 1.1 Using this Manual

---

This user manual is intended to guide users on using Kernel Undelete. We suggest that first time users should read this user manual completely and carefully before proceeding to use the software. However, if you are an experienced user, you can use the table of contents to find out information pertaining to the tasks that you need to perform by using Kernel Undelete.

You can use the table of contents to navigate through different sections of this user manual. The table of contents lists all the sections that are contained in this user manual in chronological order. The user manual comprises the following sections:

- Introduction
- Getting Started
- Software Interface
- Recovering Deleted Files
- Full Version
- Support
- Troubleshooting
- Legal Notices

Certain abbreviations have been used throughout this manual. For clear understanding of the contents of this user manual, please go through the list of abbreviations, mentioned below, before reading the manual.

### 1.1.1 List of Abbreviations

MS: Microsoft

QFSCI: Quick File System Component Identification

RAM: Random Access Memory

MB: Mega-Byte

GB: Giga-Byte

## 1.2 About Kernel Undelete

---

Kernel Undelete is deleted file recovery software that recovers files emptied from Recycle Bin or with Shift + Del keys. It recovers Windows operating system deleted files, lost due to:

- Accidental file deletion from the hard drive
- Files & folders emptied from Recycle Bin
- Files & folders deleted by Shift + Del key
- Unexpected system shutdown or software failure

Kernel Undelete data recovery software uses quick algorithm QFSCI for searching and restoring deleted files and folders and hence is fast, simple and easy to use Windows Undelete file recovery software, which helps you to recover your lost data and files in minutes in case of file deletion disasters.

## 1.3 Salient Features

---

Salient features of Kernel Undelete include:

- Efficient embedded recovery algorithms to recover deleted, missing files and folders
- Support for all FAT, NTFS, HPFS file system based partitions
- Full support for IDE, EIDE, SCSI and SATA, PAN, ZIP drives
- Full support for long file names
- User friendly graphical user interface
- Free demo to test the capabilities of the tool before purchasing it

## 1.4 Who Should Use this Software?

---

The capability of Kernel Undelete to recover deleted files and folders makes it appropriate for use by professional, home users, organizations. It's easy to use interface makes it suitable even for users having no technical skills at all.

Files and folders deleted using Shift + Del keys and emptied from the Recycle Bin are easily recovered using Kernel Undelete.

## 2. Getting Started

---

Now that you have understood the features and potential of Kernel Undelete, you are ready to get hands on experience of the software. To start the recovery process, you will first need to download and install this software.

It is strongly recommended that before installing Kernel Undelete, you should go through the installation pre-requisites for the software to ensure that your computer is appropriately configured to run the software.

### 2.1 Installation Pre-requisites


---

The various pre-requisites for installing and running Kernel Undelete can be broadly classified into two major categories – Hardware requirements and Software requirements.

#### 2.1.1 Hardware Requirements:

The hardware requirements for installing the software are as follows:

- Pentium Class Processor
- Minimum 64MB RAM (128 MB recommended)
- 10MB for Software installation
- Disk Space - Enough space to save the recovered data

 You should have at-least 40 MB of free disk space if you want to recover and save 40 MB recovered data.

#### 2.1.2 Software Requirements:

The software requirements for installing the software can further be grouped into two categories – Operating system requirements and File Systems requirements. The requirements are as follows:

##### 2.1.2.1 Operating System Requirements

Supported operating systems:

- Windows Vista
- Windows XP
- Windows 2003
- Windows 2000
- Windows Me

- Windows NT
- Windows 98
- Windows 95

#### 2.1.2.2 File Systems Requirements

##### Supported File Systems

- FAT16 (DOS, Windows 3.1/9x/NT/2K/ME/XP/2K3)
- FAT32 (DOS, Windows 3.1/9x/NT/2K/ME/XP/2K3)
- NTFS (DOS, Windows 3.1/9x/NT/2K/ME/XP/2K3)
- NTFS5 (DOS, Windows 3.1/9x/NT/2K/ME/XP/2K3)
- HPFS (DOS, Windows 3.1/9x/NT/2K/ME/XP/2K3)


## 2.2 Downloading Kernel Undelete for the First Time

---

After checking your computer with the prescribed system requirements for Kernel Undelete, you can download and install the software on your computer. You can buy the full version of the software from any one of our authorized resellers – Element5, Asknet and 2CO.

If you want to try using Kernel Undelete before buying it, you can download the evaluation version from the following link:

<https://www.nucleustechologies.com/>

 You can recover your deleted or lost data by using the evaluation version of Kernel Undelete; however, the recovered data will not be saved until you purchase Full version of the software.

## 2.3 Install Kernel Undelete

---

After downloading the installer file for Kernel Undelete, you can install the software by running the file. To install Kernel Undelete:

1. Double-click the Kernel Undelete installer. Follow the on-screen instructions.

The **Setup Installation Complete** screen will be displayed.

2. Click **Finish** to launch the software.

## 2.4 Start Kernel Undelete

---

To start Kernel Undelete:





Click the **Start → All Programs → Kernel Undelete**

Alternatively, you can launch Kernel Undelete by double-clicking the shortcut icon available on the Desktop and Quick Launch icon.

## 2.5 Uninstall Kernel Undelete


---

You may need to uninstall Kernel Undelete. To uninstall Kernel Undelete:

1. Click the **Start → All Programs → Kernel for Undelete → Uninstall Kernel for Undelete**

A warning message will be displayed.

2. Click '**Yes**' to uninstall Kernel for Undelete.

 Before proceeding to uninstall Kernel for Undelete, you must ensure that the software is not running.

You can alternatively uninstall Kernel for Undelete from the **Control Panel** by performing the following steps:

1. Click the **Start Menu → Control Panel** and then double click the **Add or Remove Programs** icon.
2. Select **Kernel for Undelete** and click **Remove**.

A warning message will be displayed.

3. Click '**Yes**' to uninstall Kernel for Undelete.

## 3. Software Interface

---

Now that Kernel for Undelete has been installed on your computer, you can start using the software after getting acquainted with the software interface.

### 3.1 Menu-bar

---

The menu-bar of Kernel for Undelete comprises four main menus – Recovery, View, Tools and Help.

#### 3.1.1 Recovery Menu

The **Recovery** menu comprises five menu items.

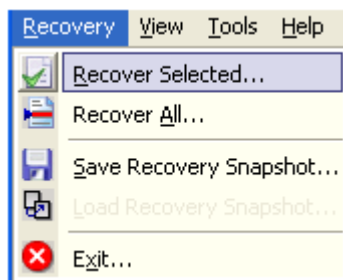


Figure 3.1: Recovery Menu

Menu items in the **Recovery** menu:

Field Name	Field Description
Recover Selected	Select to recover the selected files in the right pane of the window
Recover All	Select to recover all files in the right pane of the window
Save Recovery Snapshot	Select to save the scan information about the file(s) and folder(s) that have been found in the data recovery process
Load Recovery Snapshot	Select to load the scanned information that has been saved used using <b>Save Recovery Snapshot</b>
Exit	Select to exit from the software

### 3.1.2 View Menu

The **View** menu comprises three menu items.

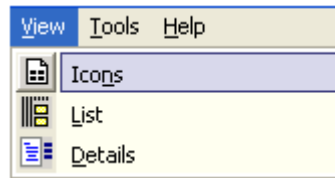


Figure 3.2: View Menu

Menu items in the **View** menu:

Field Name	Field Description
Icons	Select to view the file(s) and folder(s) in windows standard small icon view style
List	Select to view the file(s) and folder(s) in windows standard list view style
Details	Select to get the details like File Size, Creation product name, and Type along with the name of the file or folder

### 3.1.3 Tools Menu

The **Tools** menu comprises five menu items.

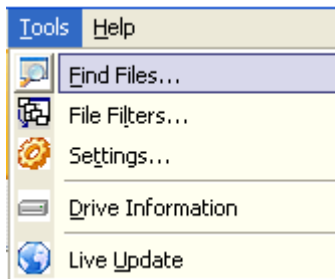


Figure 3.3: Tools Menu

Menu items in the **Tools** menu:

Field Name	Field Description
Find Files	Select for searching a particular file or file type in the data found
File Filters	Select to add filters to the files recovered
Settings	Select to configure settings of the software
Drive Information	Select to get the information about the file system being recovered
Live Update	Select to update the current software with the available version in the Nucleus server

### 3.1.4 Help Menu

The Help menu comprises three menu items.

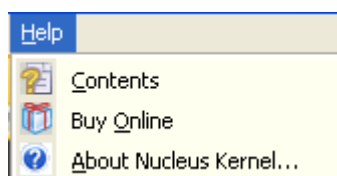








Figure 3.4: Help Menu

Menu items in the **Help** menu:

Field Name	Field Description
Contents	Select to get the Help Guide for the software
Buy Online	Select to open the page on the Internet to buy the software online
About	Select to get the version and other information related to the software

## 3.2 Tool-bar

The tool-bar in Kernel Undelete is displayed below the menu-bar. The tool-bar provides a convenient and user-friendly method to perform certain actions that can also be performed by using the menu-bar. Read the information in the table below to find out about the tool-bar buttons:

Button	Button Name	Button Description
	Recover Selected	Select to recover the selected files in the right pane of the window
	Recover All	Select to recover all files in the right pane of the window
	Save Recovery Snapshot	Select to save the scan information about the file(s) and folder(s)
	Load Recovery Snapshot	Select to load the recovery summary or snapshot saved last time
	Find Files	Select to search for particular files in the current recovery session
	Settings	Select to configure the various options to control over the whole recovery process






Live Update

Select to update the current software with the available version in the Nucleus server

### 3.3 Buttons Used

---

Apart from the standard options available in the menu-bar and the tool-bar, three buttons– **Next**, **Back** and **Stop** are displayed on the main window.

	Click to proceed with the recovery process
	Click to go back to the previous window
	Click to stop the scanning process

## 4. Recovering Deleted Files

### 4.1 How to recover deleted files?

Now that you have complete familiarity of the user interface of Kernel Undelete, you are ready to recover deleted files.

To recover files:

1. Launch Kernel Undelete. As soon the software is launched, it scans all the physical disks attached to your system and displays them.

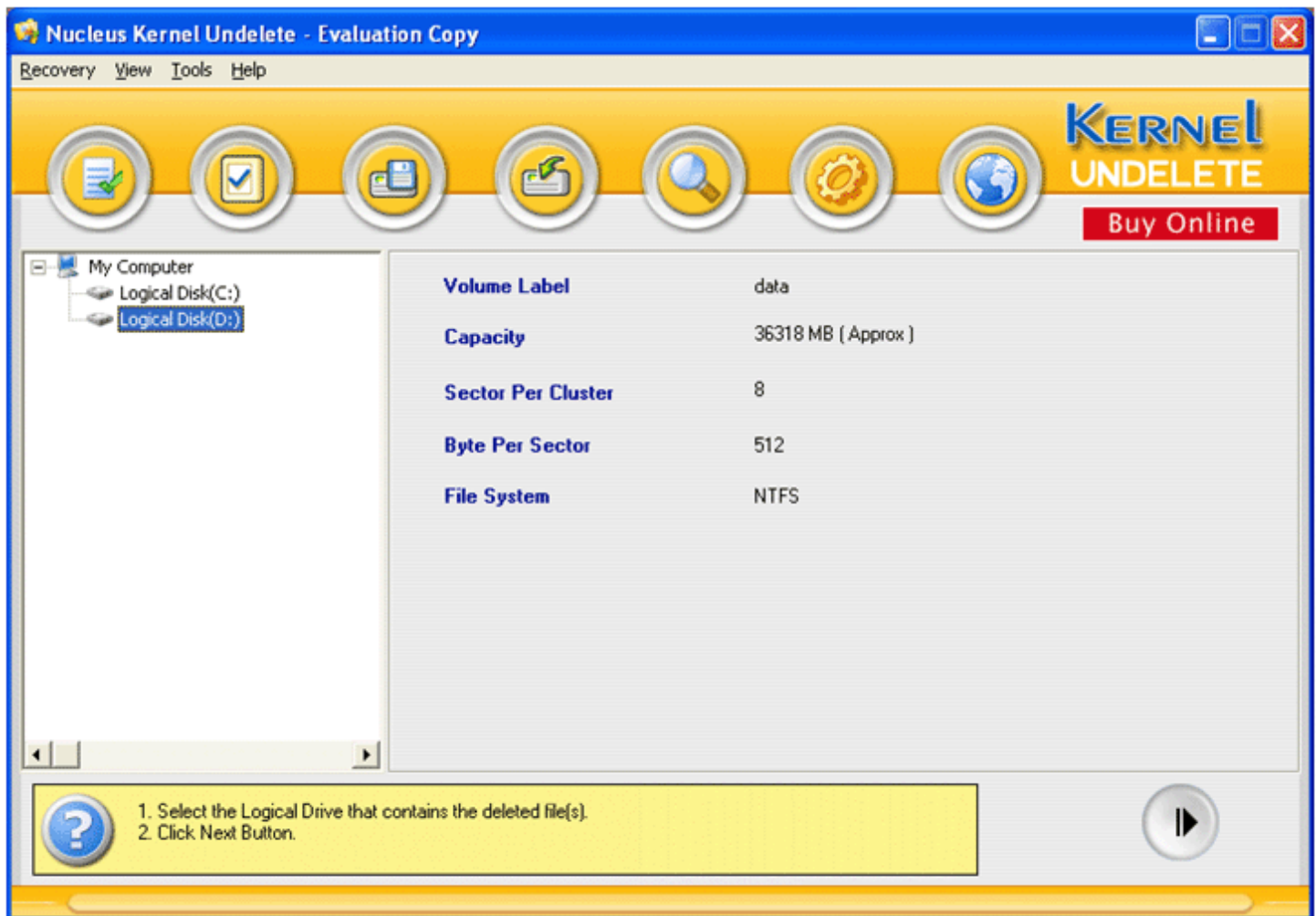


Figure 4.1: Main Window showing all physical disks

2. Select the logical disk from where you want to recover the deleted files or folders and click **Next** button.

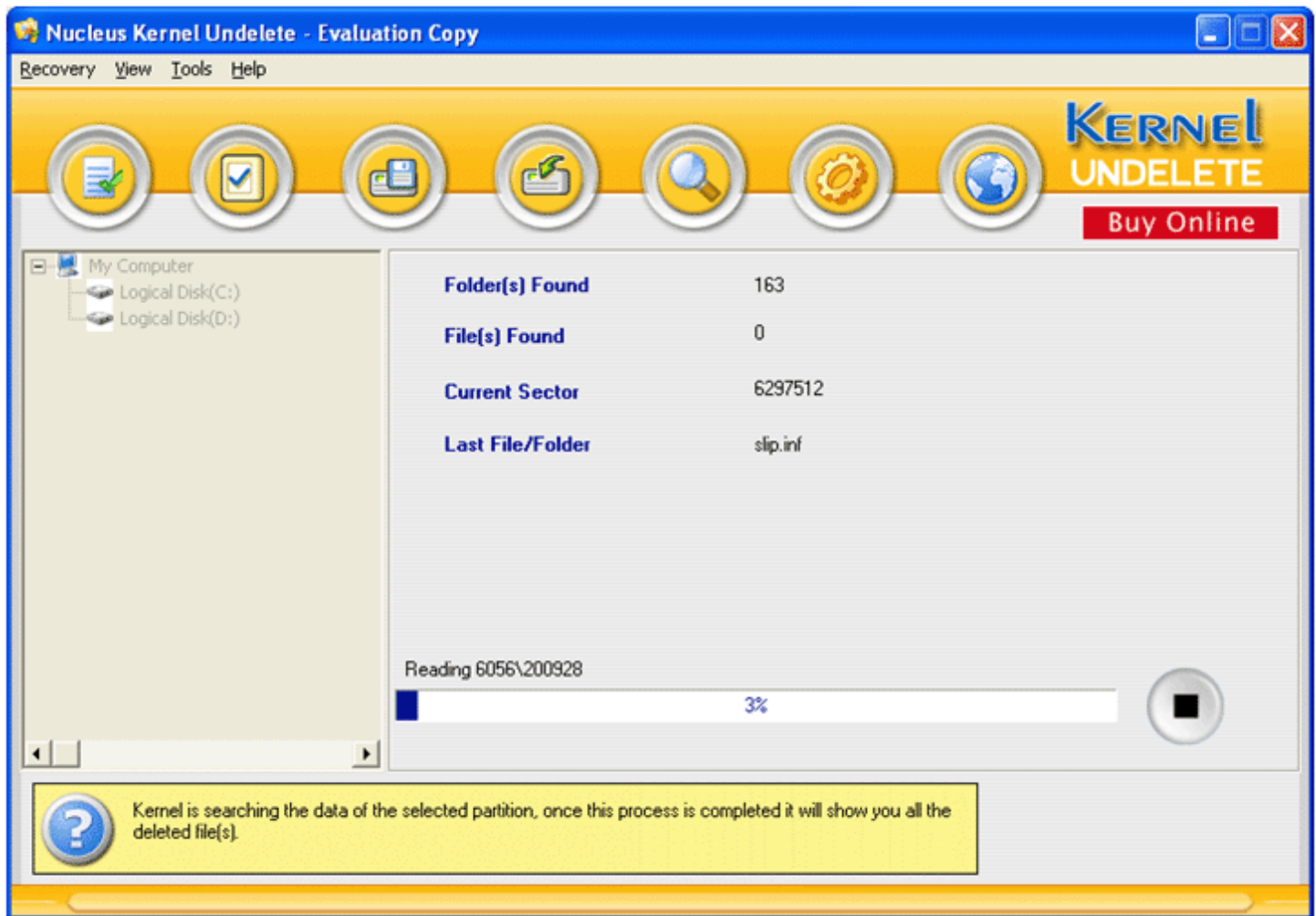


Figure 4.2: Scanning Process

The software starts the scanning process and looks for deleted files in sectors of the selected logical disk.

🔍 Software shows the deleted files and folders found in the particular logical disk in a tree like structure.



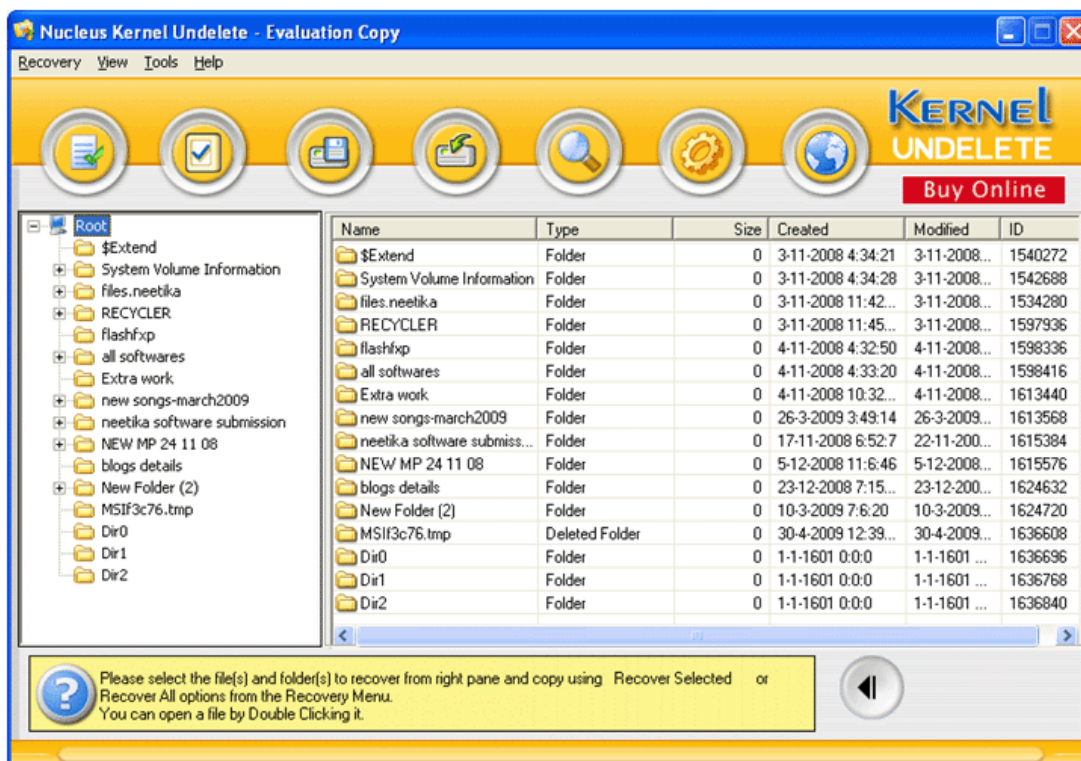


Figure 4.3: Files Found

3. Select the file which you want to recover and save at the desired location.
4. It allows you to save the recovered data in two ways: **Recover All** and **Recover Selected**
5. Select **Recovery→Recover All** option to save all the recovered files from the right pane of the window at the desired location. OR Click **Recover All** button from the tool-bar.
6. Select **Recovery→Recover Selected** option to save selected file(s) from the Left Pane to some desired location. OR Click **Recover Selected** button from the tool-bar.
7. Browse to your desired location and click **OK**.

## 4.2 Stop and Resuming Recovery Process

Kernel Undelete allows the option to resume the recovery at a later time. It loads a saved recovery state file to resume a previous recovery session. There are times when a scan seems to take forever. They can last for hours, sometimes days depending upon the size of the drive as well as the damage to the file system. In order to avoid rescanning, you can use **Save Recovery Snapshot** option.

- Click **Recovery** menu → **Save Recovery Snapshot** or Click **Save Recovery Snapshot** button from the tool-bar.
- Save your recovery snapshot to the desired location.

To resume recovery, use **Load Recovery Snapshot** option, at the time of starting up when you have selected storage device:

- Click **Recovery** menu → **Load Recovery Snapshot** option or Click **Load Recovery Snapshot** button from the tool-bar.
- Load your last recovery summary from the location where you have saved it.

## 5. Full Version

---

Although you can use Kernel Undelete evaluation version for free and experience the capabilities of the software, there are certain features that are not available in the evaluation version.

### 5.1 Requirement of Full Version

---

By using the evaluation version of Kernel Undelete, you can recover and preview the corrupted or deleted data, files and folders. However, you cannot save the recovered data.

You will need to buy full version of the software to save all the recovered data at the desired location.

### 5.2 Purchasing Full Version

---

You can buy the full version of Kernel Undelete from any one of our authorized resellers – Element5, Asknet and 2CO.

As soon the purchase transaction with our resellers gets completed, our sales team will send you an email comprising the URL to download the full version of Kernel Undelete and activation details of the software.

## 6. Support

---

We have an extensive and efficient support system in place to assist our customers with all issues related to using Kernel Undelete. The software comes with an embedded help manual that can be accessed by clicking **Help→Contents** in the menu-bar. You can also press the F1 key on the keyboard of your computer to access the embedded help of Kernel Undelete.

We also have live support wherein you can chat with our software experts at <https://www.nucleustechnologies.com/supportcenter/>

To talk on phone with our software experts call:

**Help line:**

+91-9818725861

1-866-348-7872 (Toll Free for USA/CANADA)

You can also email us about your queries at;

[sales@nucleustechnologies.com](mailto:sales@nucleustechnologies.com) for Sales

[support@nucleustechnologies.com](mailto:support@nucleustechnologies.com) for Support

[contact@nucleustechnologies.com](mailto:contact@nucleustechnologies.com) for General Queries

## 7. Troubleshooting

---

This section deals with your generic and specific queries pertaining to using Kernel Undelete.

### 7.1 Common Issues

---

#### **Why does Kernel Undelete have limitations in evaluation copy?**

Kernel Undelete evaluation copy usually checks your disk and data but it doesn't allow you to save the recovered data.

Purchasing the full version of the software allows you to save recovered files in the desired location.

### 7.2 Frequently Asked Questions

---

#### **I have lost my full version for Kernel Undelete. Can you help me?**

Please email us at [sales@nucleustechnologies.com](mailto:sales@nucleustechnologies.com). Please include your name, address, email address, and order confirmation number (if you have it). We will be happy to help you.

#### **Can I install the software on the same device from which I want to recover deleted file(s)?**

First of all, don't install Kernel Undelete on the Bad Device. Remember the golden rule of data recovery: never change anything on the Bad Device!

Even don't install Kernel Undelete on the same drive from which you want to recover deleted file(s) because there is a possibility of overwritten of data.

#### **Is my online order safe?**

Yes, you get the most secure and safest ordering option to buy your software Kernel Undelete from Nucleus Data Recovery.com. We never share your personal information with the third parties.

## 8. Legal Notices

---

This section comprises the legal specification about Kernel Undelete and the company NUCLEUS DATA RECOVERY.COM PRIVATE LIMITED

### 8.1 Copyright

---

NUCLEUS DATA RECOVERY.COM PRIVATE LIMITED, Nucleus Kernel accompanied user manual and documentation are copyright of NUCLEUS DATA RECOVERY.COM PRIVATE LIMITED, with all rights reserved. Under the copyright laws, this user manual cannot be reproduced in any form without the prior written permission of NUCLEUS DATA RECOVERY.COM PRIVATE LIMITED. No Patent Liability is assumed, however, with respect to the use of the information contained herein.

© NUCLEUS DATA RECOVERY.COM PRIVATE LIMITED. All rights reserved.

### 8.2 Trademark

---

Nucleus Kernel ® is a copyright work of NUCLEUS DATA RECOVERY.COM.

Windows' 95®, Windows' 98®, Windows' ME®, Windows' NT®, Windows' 2000 Server®, Windows' 2000 Advanced Server®, Windows' 2003 Server®, Windows' XP® and MS-DOS are registered trademarks of Microsoft Corporation.

All other brand and product names are trademarks or registered trademarks of their respective companies.

### 8.3 Disclaimer

---

The Information contained in this manual, including but not limited to any product specifications, is subject to change without notice. NUCLEUS DATA RECOVERY.COM PRIVATE LIMITED provides no warranty with regard to this manual or any other information contained herein and here by expressly disclaims any implied warranties of merchantability or fitness for any particular purpose with regard to any of the foregoing NUCLEUS DATA RECOVERY.COM PRIVATE LIMITED assumes no liability for any damages incurred directly or indirectly from any technical or typographical errors or omissions contained herein or for discrepancies between the product and the manual. In no event shall NUCLEUS DATA RECOVERY.COM PRIVATE LIMITED, be liable for any incidental, consequential special, or exemplary damages, whether based on tort, contract or otherwise, arising out of or in connection with this manual or any other information contained herein or the use there of.

### 8.4 License Agreement

---

Nucleus Kernel Undelete Copyright © by NUCLEUS DATA RECOVERY.COM PRIVATE LIMITED, All rights reserved.

This license applies to the standard-licensed version of Nucleus Kernel Undelete.  
NUCLEUS DATA RECOVERY.COM PRIVATE LIMITED

#### Your Agreement to this License

You should carefully read the following terms and conditions before using, installing or distributing this software, unless you have a different license agreement signed by NUCLEUS DATA RECOVERY.COM PRIVATE LIMITED. The terms and conditions of this License describe the permitted use and users of each Licensed Copy of Kernel Undelete. For purposes of this License, if you have a valid license, you have the right to use a single Licensed Copy of Nucleus Kernel.

## **Scope of License**

Each Licensed Copy of Kernel Undelete may either be used by a single person or used non-simultaneously by multiple people who use the software personally installed on a single workstation. All rights of any kind in Nucleus Kernel, which are not expressly granted in this License, are entirely and exclusively reserved to and by NUCLEUS DATA RECOVERY.COM PRIVATE LIMITED. You may not rent, lease, modify, translate, reverse engineer, decompile, disassemble, or create derivative works based on, Nucleus Kernel, nor permit anyone else to do so. You may not make access to Nucleus Kernel available to others in connection with a service bureau, application service provider, or similar business, nor permit anyone else to do so.

## **Warranty Disclaimers and Liability Limitations**

Nucleus Kernel, and any and all accompanying software, files, data and materials, are distributed and provided as is and with no warranties of any kind, whether expressed or implied. In particular, there is no warranty for the quality of data recovered. You acknowledge that good data processing procedure dictates that any program, including Nucleus Kernel, must be thoroughly tested with non-critical data before there is any reliance on it, and you hereby assume the entire risk of all use of the copies of Nucleus Kernel covered by this License. This disclaimer of warranty constitutes an essential part of this License.

In addition, in no event does NUCLEUS DATA RECOVERY.COM PRIVATE LIMITED authorize you or anyone else to use Nucleus Kernel in applications or systems where Nucleus Kernel failure to perform can reasonably be expected to result in a significant physical injury, or in loss of life. Any such use is entirely at your own risk, and you agree to hold NUCLEUS DATA RECOVERY.COM PRIVATE LIMITED harmless from any and all claims or losses relating to such unauthorized use.

## **General**

This License is the complete statement of the agreement between the parties on the subject matter, and merges and supersedes all other or prior understandings, purchase orders, agreements and arrangements. This License shall be governed by the laws of the State of Delhi. Exclusive jurisdiction and venue for all matters relating to this License shall be in courts and for a located in the State of Delhi, and you consent to such jurisdiction and venue. There are no third party beneficiaries of any promises, obligations or representations made by NUCLEUS DATA RECOVERY.COM PRIVATE LIMITED herein. Any waiver by NUCLEUS DATA RECOVERY.COM PRIVATE LIMITED of any violation of this License by you shall not constitute, nor contribute to, a waiver by NUCLEUS DATA RECOVERY.COM PRIVATE LIMITED of any other or future violation of the same provision, or any other provision, of this License.