



## Kernel for SQL Database

Perform Flawless Recovery for Damaged MDF  
Database Files

## PRODUCT GUIDE

# Table of Contents

---

1.	Introduction to Kernel for SQL Database.....	5
1.1	Using this Manual.....	5
1.1.1	List of Abbreviations .....	5
1.2	About Kernel for SQL Database .....	6
1.3	Salient Features .....	6
1.4	Who Should Use this Software?.....	7
2.	Getting Started .....	8
2.1	Installation Pre-requisites.....	8
2.1.1	Hardware Requirements.....	8
2.1.2	Software Requirements .....	8
2.1.2.1	Operating System Requirements.....	8
2.1.2.2	SQL Server Version Requirements.....	9
2.2	Downloading Kernel for SQL Database for the First Time .....	9
2.3	Install Kernel for SQL Database .....	9
2.4	Start Kernel for SQL Database.....	10
2.5	Uninstall Kernel for SQL Database.....	10
3.	Software Interface .....	11
3.1	Menu Bar .....	11
3.1.1	File Menu .....	11
3.1.2	Tools Menu .....	11
3.1.3	Help Menu.....	12
3.2	Tool Bar .....	12
3.3	Buttons Used .....	13
4.	Repairing .MDF Files.....	14
5.	Download Purchase and Register.....	22
5.1	Free Trial Download.....	22
5.2	Purchase & Register .....	23
5.3	Support.....	23



6.	Troubleshooting .....	25
6.1	Common Issues .....	25
6.2	Frequently Asked Questions .....	25
7.	Legal Notices .....	26
7.1	Copyright Notice .....	26
7.2	Trademarks.....	26
7.3	Disclaimer .....	26
7.4	License Agreement .....	26



# Table of Figures

---

Figure 3.1: File Menu.....	11
Figure 3.2: Tools Menu.....	12
Figure 3.3: Help Menu.....	12
Figure 4.1: Home Window of Kernel for SQL Database.....	14
Figure 4.2: Locate Corrupt SQL Database.....	15
Figure 4.3: Select SQL Database Version.....	16
Figure 4.4: Enlisted SQL Database Objects.....	17
Figure 4.5: Error Message on selection of wrong SQL Server version.....	17
Figure 4.6: Preview of Selected Object.....	18
Figure 4.7: Available Saving Modes.....	19
Figure 4.8: Saving Database Objects in Progress.....	21
Figure 4.9: Successful Saving of Database Objects.....	22

# 1. Introduction to Kernel for SQL Database

---

Welcome to the User Manual for Kernel for SQL Database, an effective and powerful data recovery software to recover data from the corrupt SQL databases (.MDF). This user manual comprises step-by-step guidelines on using Kernel for SQL Database software.

## 1.1 Using this Manual

---

This User Manual is intended to guide users on using Kernel for SQL Database. We suggest that first time users should read this User Manual completely and carefully before proceeding to use the software. However, if you are an experienced user, you can use the Table of Contents to find out information pertaining to the tasks that you need to perform by using Kernel for SQL Database.

You can use the Table of Contents to navigate through different sections of this User Manual. The Table of Contents enlists all the sections contained within this user manual in chronological order. This User Manual comprises following sections:

- Introduction
- Getting Started
- Software Interface
- Repairing .MDF Files
- Full Version
- Support
- Troubleshooting
- Legal Notice

Certain abbreviations have been used throughout this manual. For clear understanding of the contents of this user manual, please go through the list of abbreviations, mentioned below, before reading the manual.

### 1.1.1 List of Abbreviations

---

MS: Microsoft

SQL: Structured Query Language

QFSCI: Quick File System Component Identification



RAM: Random Access Memory

MB: Mega-Byte

GB: Giga-Byte

## 1.2 About Kernel for SQL Database

---

Kernel for SQL Database is an advanced and professional database recovery software that recovers data from corrupt, damaged .MDF database files. Kernel for SQL Database software is equipped with powerful QFSCI algorithm which efficiently scans and retrieves data from the corrupt databases.

The common reasons which lead to SQL database corruptions are:

- Invalid database file header
- Not able to associate database file with different databases
- Internal Program Error(s)
- Crash or failure of hard drive
- Media contamination or damage
- Accidental deletion of data and files
- Accidental reformatting of partitions
- Virus attacks
- Data corruptions

## 1.3 Salient Features

---

Salient features of Kernel for SQL Database include:

- Effectively repairs and extracts data from the corrupt SQL database (.MDF).
- Creates script file(s) where the recovered files are saved.
- Deleted records can be recovered and are saved in a separate SQL script.
- Accurately recovers Microsoft SQL Server backup files.



- Accurately recovers all database objects contained within .MDF files including tables, triggers, views, stored procedures, primary keys, indexes, unique keys, foreign keys, pre-defined defaults, default values, rules, checks, and user data types (default, rule, Allow null).
- Capable of restoring data on server while SQL Server is still running.
- Preserves structure and properties of recovered SQL databases objects.
- Recovers multiple .MDF files and folders in no matter of time.
- Efficiently repairs large-sized .MDF files.
- Fully supports recovery of data from .MDF files created with SQL Server version 2000, 2005, 2008, 2008 R2 and 2012.
- Offers an easy-to-use, self-descriptive, user-friendly Graphical User Interface. No technical skills required for operating the software.
- Available as a free to download demo version.
- Offers round-the-clock technical support.

## 1.4 Who Should Use this Software?

---

The capability of Kernel for SQL Database to repair large-sized SQL databases makes it appropriate for use by SQL Server administrators, who need to recover data from corrupt or damaged .MDF database files. The corruption could have been caused due to virus attacks, improper system shutdown, network problems, database file header corruption, etc.



## 2. Getting Started

---

Now that you have understood the features and potential of Kernel for SQL Database, you are ready to get a hand on experience of the software. To start repairing .MDF files, you will first need to download and install this software.

It is strongly recommended that before installing Kernel for SQL Database, you should go through the installation pre-requisites for the software to ensure that your computer is appropriately configured to run the software.

### 2.1 Installation Pre-requisites

---

The various pre-requisites for installing and running Kernel for SQL Database can be broadly classified into two major categories – Hardware requirements and Software requirements.

#### 2.1.1 Hardware Requirements

---

The hardware requirements for installing the software are as follows:

- Pentium Class Processor
- Minimum 64MB RAM (128 MB Recommended)
- 10MB free space for Software Installation
- Disk Space - Enough disk space to save the results

#### 2.1.2 Software Requirements

---

The software requirements for installing the software can further be grouped into two categories – Operating System requirements and SQL Server version requirements. The requirements are as follows:

##### 2.1.2.1 Operating System Requirements

---

Supported Windows Platforms:

- Windows 8
- Windows 7
- Windows Vista
- Windows XP





- Windows Server 2000
- Windows Server 2003
- Windows Server 2008
- Windows Server 2008 R2
- Windows Server 2012

### 2.1.2.2 SQL Server Version Requirements

---

Supported MS SQL Server Versions:

- SQL Server 2000
- SQL Server 2005
- SQL Server 2008
- SQL Server 2008 R2
- SQL Server 2012

## 2.2 Downloading Kernel for SQL Database for the First Time

---

After checking your computer with the prescribed system requirements for Kernel for SQL Database, you can download and install the software on your computer. You can buy the full version of the software from any one of our authorized resellers – Element5, Asknet and 2CO.

If you want to try using Kernel for SQL Database before buying it, you can download the evaluation version from the following link:

<https://www.nucleustechnologies.com/download-sql-recovery.php>



You can repair .MDF files saved on your system by using the evaluation version of Kernel for SQL Database; however, the repaired file will not be saved until you purchase the full version of the software.

## 2.3 Install Kernel for SQL Database

---

After downloading the installer file for Kernel for SQL Database, you can install the software by running the file. To install Kernel for SQL Database:



1. Double-click the **Kernel for SQL Database** installer.
2. Follow the on-screen instructions.
3. The **Setup Installation Complete** screen get displayed.
4. Click **Finish** to launch the software.

## 2.4 Start Kernel for SQL Database

---

To start **Kernel for SQL Database**:

Click **Start → All Programs → Kernel for SQL Database**

Alternatively, you can launch **Kernel for SQL Database** by double-clicking the shortcut icon available on the desktop and Quick Launch icon.

## 2.5 Uninstall Kernel for SQL Database


---

You may need to uninstall and re-install Kernel for SQL Database. To uninstall Kernel for SQL Database:

1. Click **Start → All Programs → Kernel for SQL Database → Uninstall Kernel for SQL Database**

A warning message will be displayed.

2. Click '**Yes**' to uninstall Kernel for SQL Database.

 Before proceeding to uninstall Kernel for SQL Database, you must ensure that the software is not running.

You can alternatively uninstall Kernel for SQL Database from the **Control Panel** by performing the following steps:

1. Click the **Start Menu → Control Panel** and then double-click the **Add or Remove Programs** icon.
2. Select **Kernel for SQL Database** and click **Remove**.

A warning message will be displayed.

3. Click '**Yes**' to uninstall Kernel for SQL Database.



## 3. Software Interface

---

Now that Kernel for SQL Database has been installed on your computer, you can start using the software after getting acquainted with the software interface.

### 3.1 Menu Bar

---

The Menu bar of Kernel for SQL Database comprises three menus:

- File Menu
- Tools Menu
- Help Menu

#### 3.1.1 File Menu

---

The **File** menu comprises three menu items:

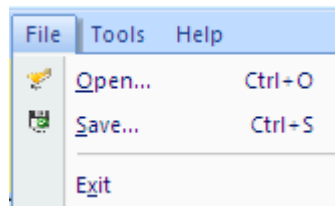


Figure 3.1: File Menu

Following table enlists the options available in the **File** menu:

Option	Description
Open	Select this option to locate the damaged SQL database on your hard disk
Save	Select this option to save the data so recovered from the SQL database
Exit	Select this option to close the application

#### 3.1.2 Tools Menu

---

The **Tools** menu comprises only one menu item:



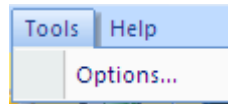


Figure 3.2: Tools Menu

On clicking on **Options** menu item, the software offers two options that are:

Option	Description
Consider all pages as corrupted	Highly-recommended to select this option; proves useful in recovering data from heavily-corrupted databases
Save the tables without identity property	Select this option if tables are not saving due to corrupted data. Checking this option will allow saving the tables without identity; you can set the identity of these tables after recovery

### 3.1.3 Help Menu

**Help** menu of Kernel for SQL Database software appears, as shown in the following figure:

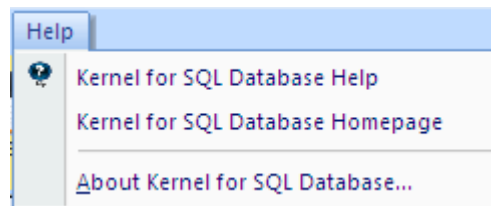


Figure 3.3: Help Menu



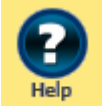
Following table enlists the options available in the **Help** menu:

Option	Description
Kernel for SQL Database Help	Select this option to view Help manual of the software
Kernel for SQL Database Homepage	Select this option to visit the webpage to know more about the software
About Kernel for SQL Database	Select this option to view version information about the software and various other related links

## 3.2 Tool Bar

Tool bar consists of buttons that work as short cuts for various options available in the main menus of Kernel for SQL Database software. Following table enlists the buttons available on the Tool bar of the software:

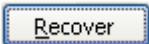

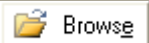
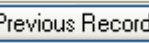

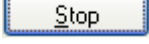
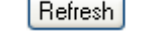


Button	Description
 Open	Select this option to locate the damaged SQL database on your hard disk
 Save	Select this option to save the data so recovered from the SQL database
 Help	Select this option to view Help manual of the software

### 3.3 Buttons Used

---

There are several buttons used in the software that helps you throughout the recovery process. Following table enlists the buttons used in the software:

Button	Description
 Recover	This option initiates the recovery process of the selected database
 Cancel	This option cancels the action and closes the dialog
 Browse	This option lets you locate the damaged SQL database
 Previous Records	This option takes you to the previous page in the record
 Next Records	This option takes you to the next page in the record
 Stop	This option lets you stop the ongoing process
 Refresh	This option allows you to refresh the process

## 4. Repairing .MDF Files

Kernel for SQL Database is an ideal software that helps you restore objects from corrupt databases. No matter what made your MDF database corrupt or inaccessible, Kernel for SQL database will recover your data easily and quickly. Follow the steps given below to repair SQL Databases:

1. Select **Start > All Programs > Kernel for SQL Database > Kernel for SQL Database** to launch the software. The software home window appears:

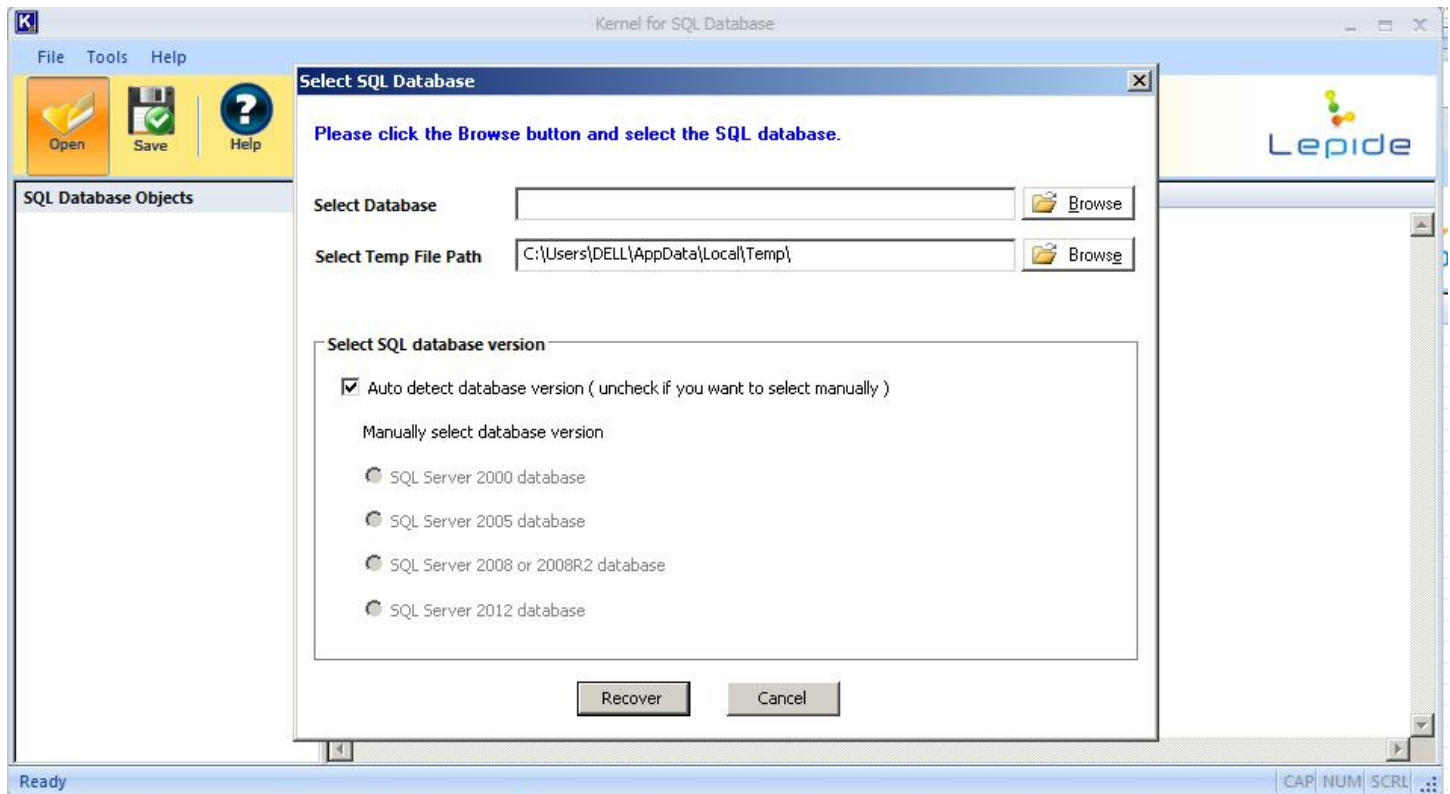


Figure 4.1: Home Window of Kernel for SQL Database

✎ "Select SQL Database" dialog appears by-default when the software is launched. This dialog can be launched by clicking the **Open** button in **Tool** bar or by selecting **File** menu > **Open**.

2. Click the **Browse** button to locate the corrupt SQL Database:

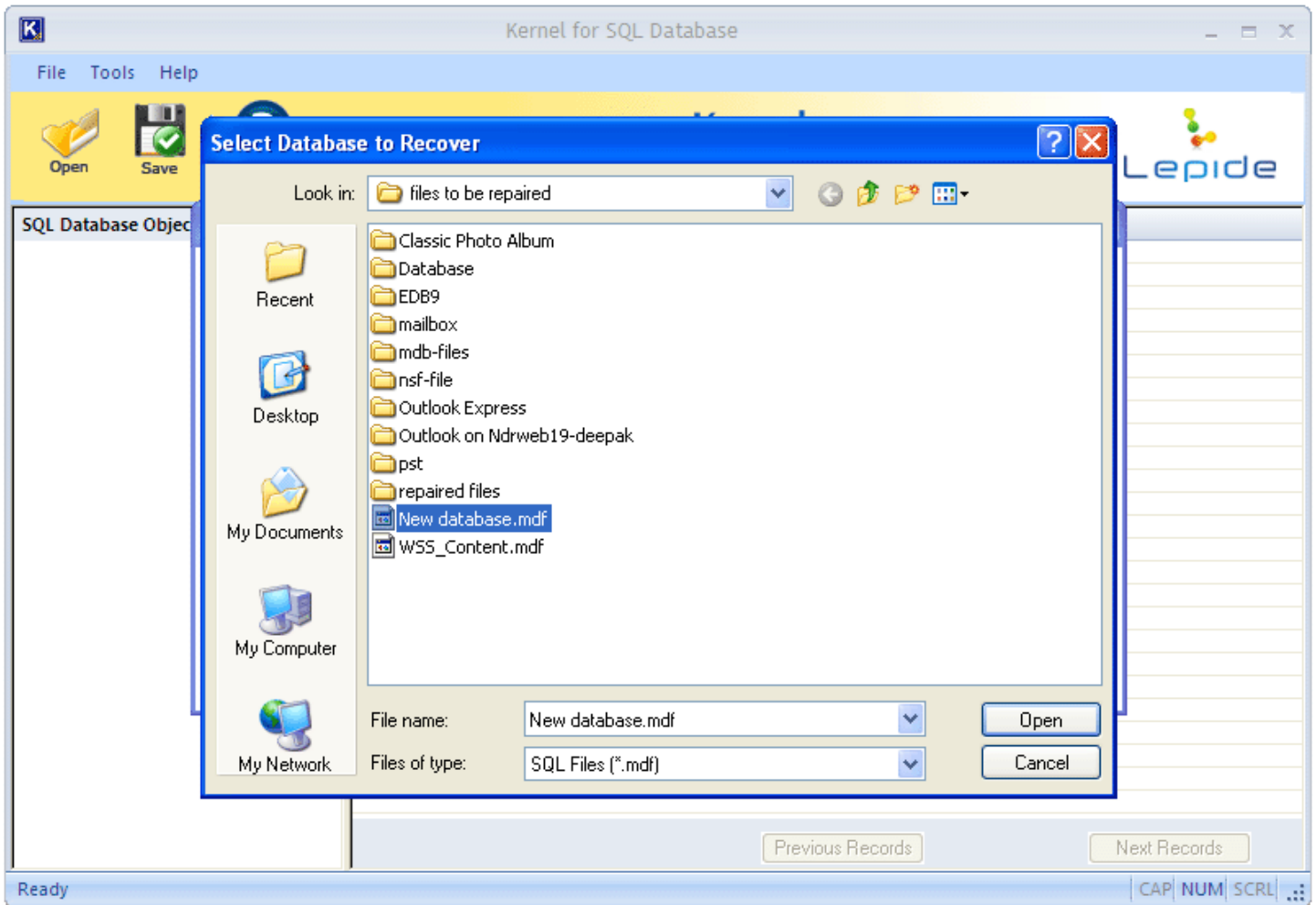


Figure 4.2: Locate Corrupt SQL Database

3. Select the **SQL Database version** with which the .MDF file is created:

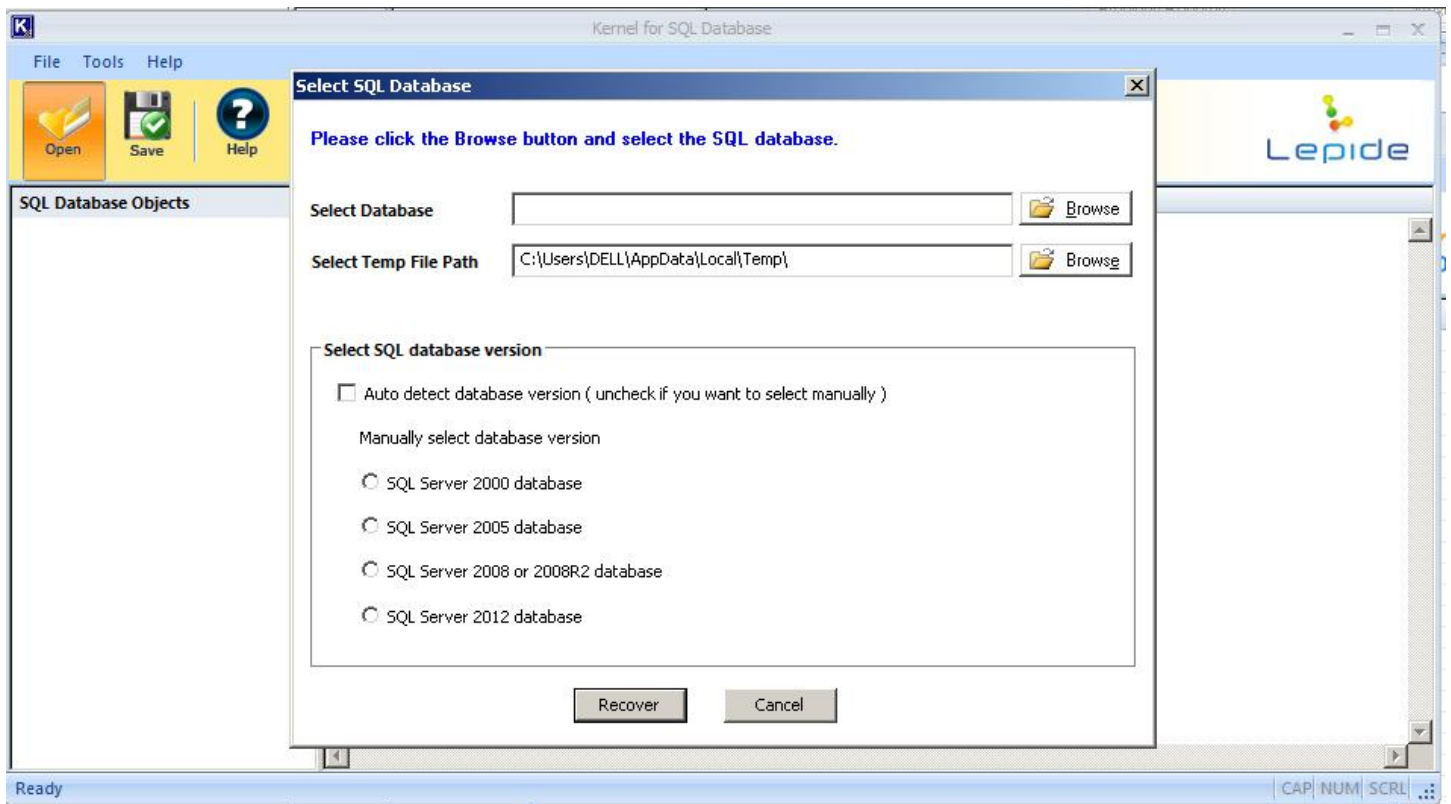


Figure 4.3: Select SQL Database Version

4. Click the **Recover** button to initiate the recovery process, Software will enlist the SQL database objects in the left pane:



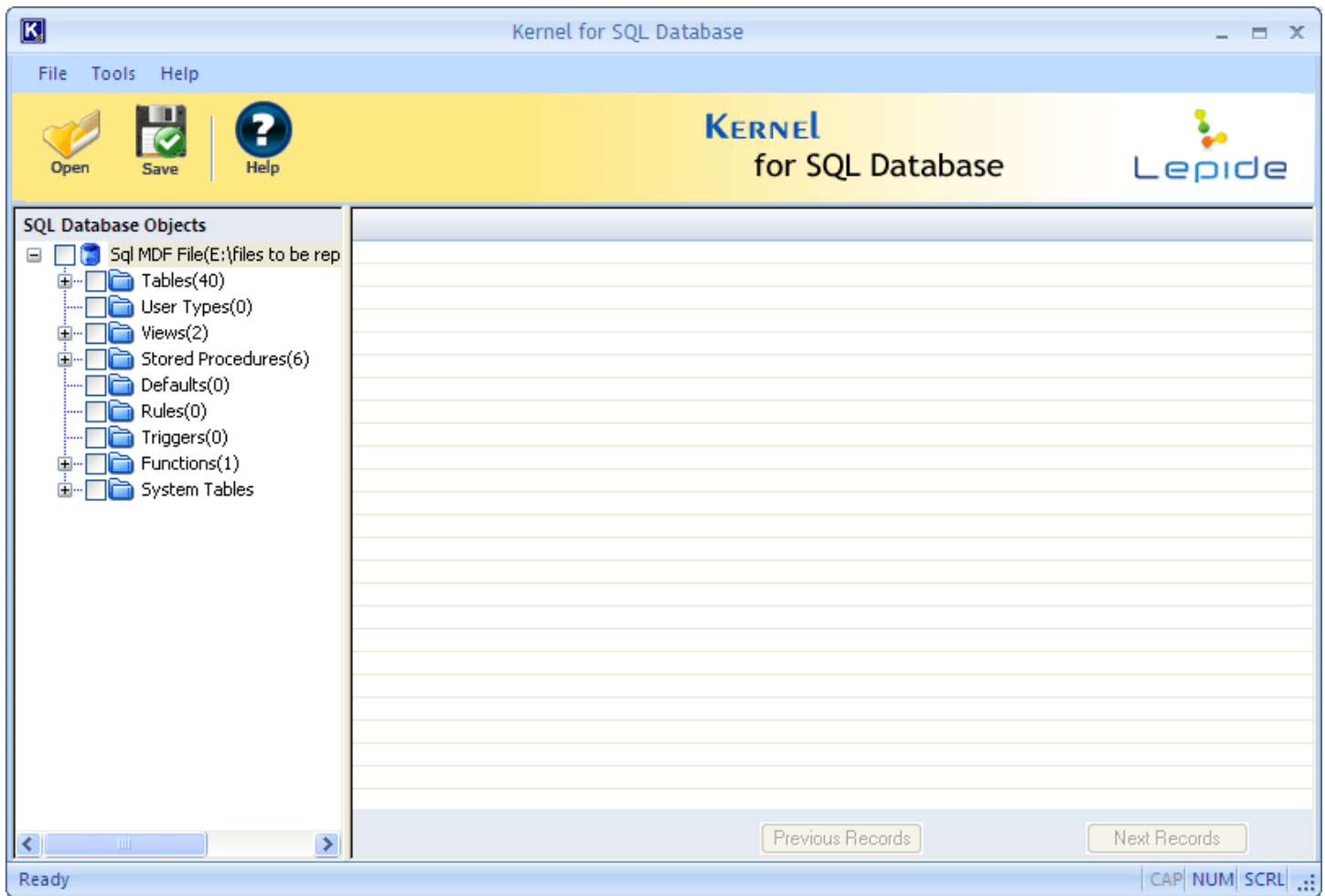


Figure 4.4: Enlisted SQL Database Objects

Note that, if the user selects the wrong SQL Server version, software displays the following error message:



Figure 4.5: Error Message on selection of wrong SQL Server version

5. Select an object in the left tree whose content you want to verify before saving. When you select the folder, its content will be displayed in the right pane:



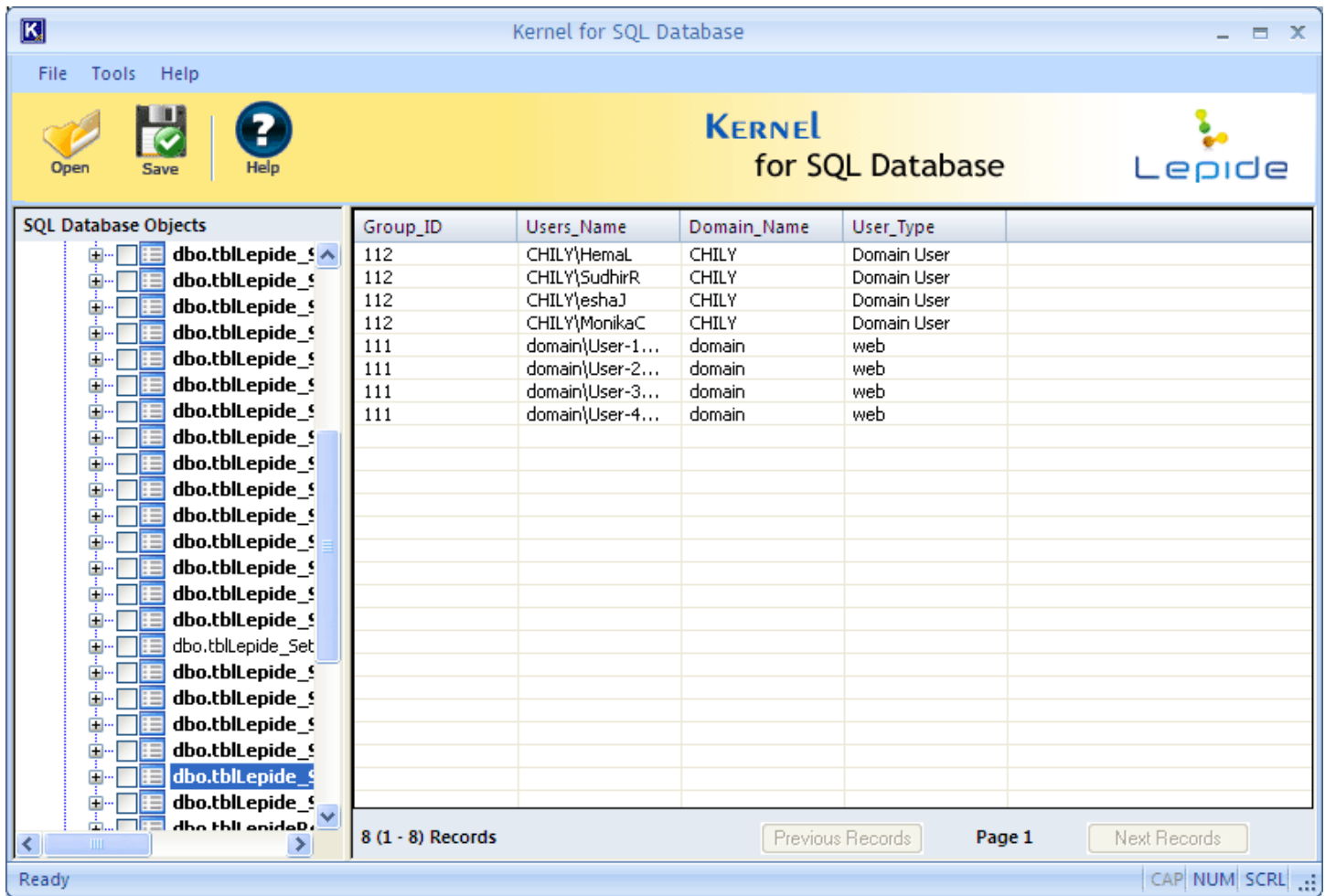



Figure 4.6: Preview of Selected Object

- After previewing the required items, select the data for saving and then click the **Save** button. The 'Saving Mode' dialog box appears:

Figure 4.7: Available Saving Modes

 To save the data, you can click the **Save** button on the **Tool bar** or go to **File** menu > **Save**

You can save the recovered objects in two different modes which are:

- **SQL Server:** Using this option, the recovered objects can be saved on SQL Server directly, even if the Server is running. To save the data on SQL Server:
  1. Mention Server Name and Name of the database in **Server Name** and **Database Name** fields respectively. Do not provide the name of existing database in **Database Name** field. Create a new database in SQL Server Management Studio and enter the name of new database in **Database Name** field. However, existing database name can also be provided but in case of existing database restored objects will get merged with existing objects.
  2. Select the Authentication option with which you wish to access the SQL Server i.e. **Windows Authentication** or **Server Authentication**

To access **SQL Server** with **Server Authentication**, you need to enter **User Name** and **Password** in the respective fields.

- **Batch File:** Using this option, you can save the batch file of the rebuilt SQL database on a desired location. To save the recovered, you need to browse the location using the **Browse** button. The data so recovered is saved in separate script files at the desired location. Also, a script file (commit.bat) is also created that enables the user to easily copy the recovered objects to a new database created on SQL Server. To copy recovered objects to new database on SQL server:

1. Go to SQL Server Management Studio
2. Create a New Database
3. Double-click on commit.bat

OR

(Run → cmd ) Change the path to recovered folder ( cd PathName)

4. Use following syntax:

**>commit.bat servername newcreateddatabase sqlserverusername sqlserverpassword**

Press Enter key and all tables will be copied to the new created database.

7. After selecting the required Saving Mode option, click **OK** button. The software starts saving the recovered objects:



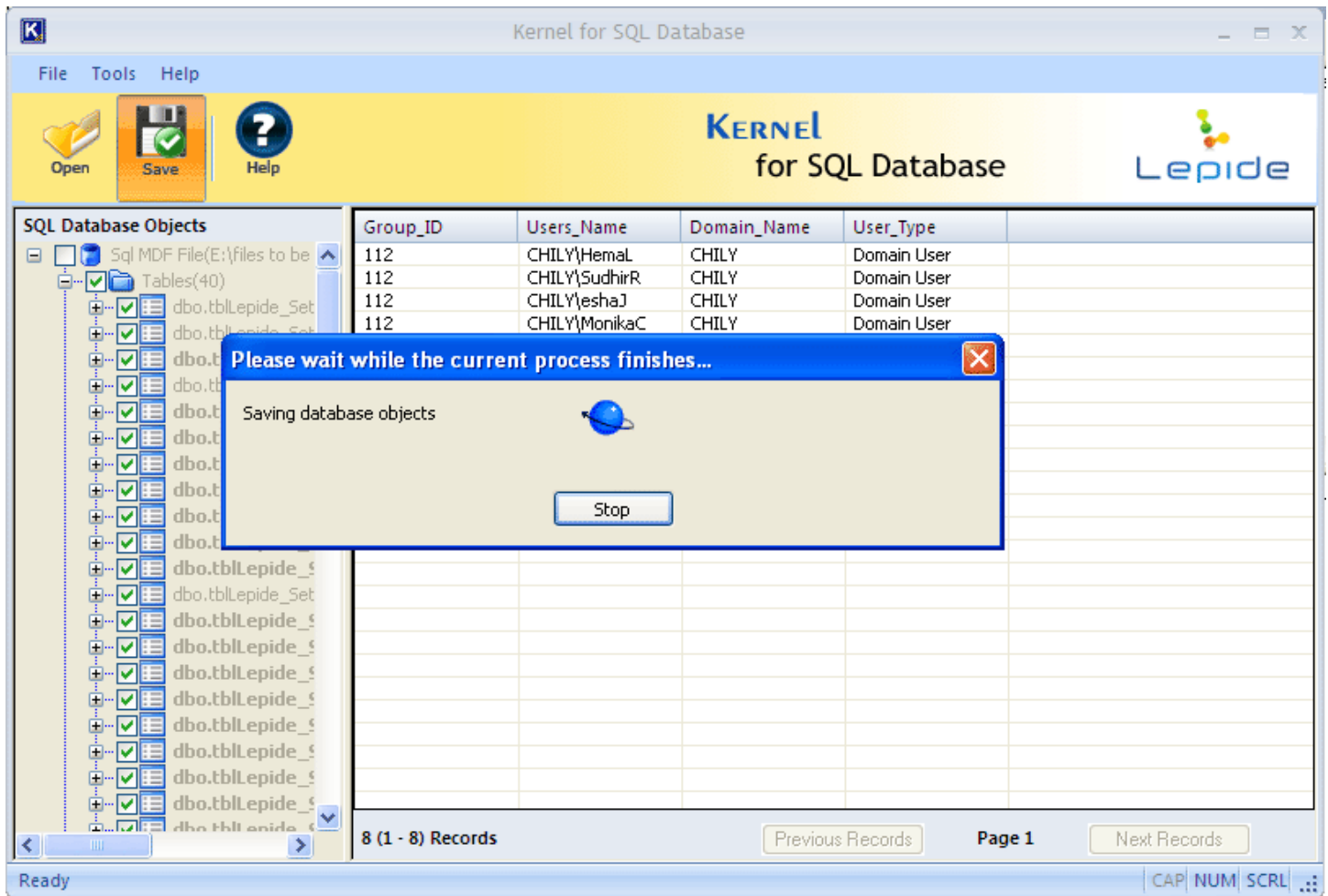


Figure 4.8: Saving Database Objects in Progress

- The software displays following **'Process Completed'** dialog box when the data is saved successfully at the desired location:

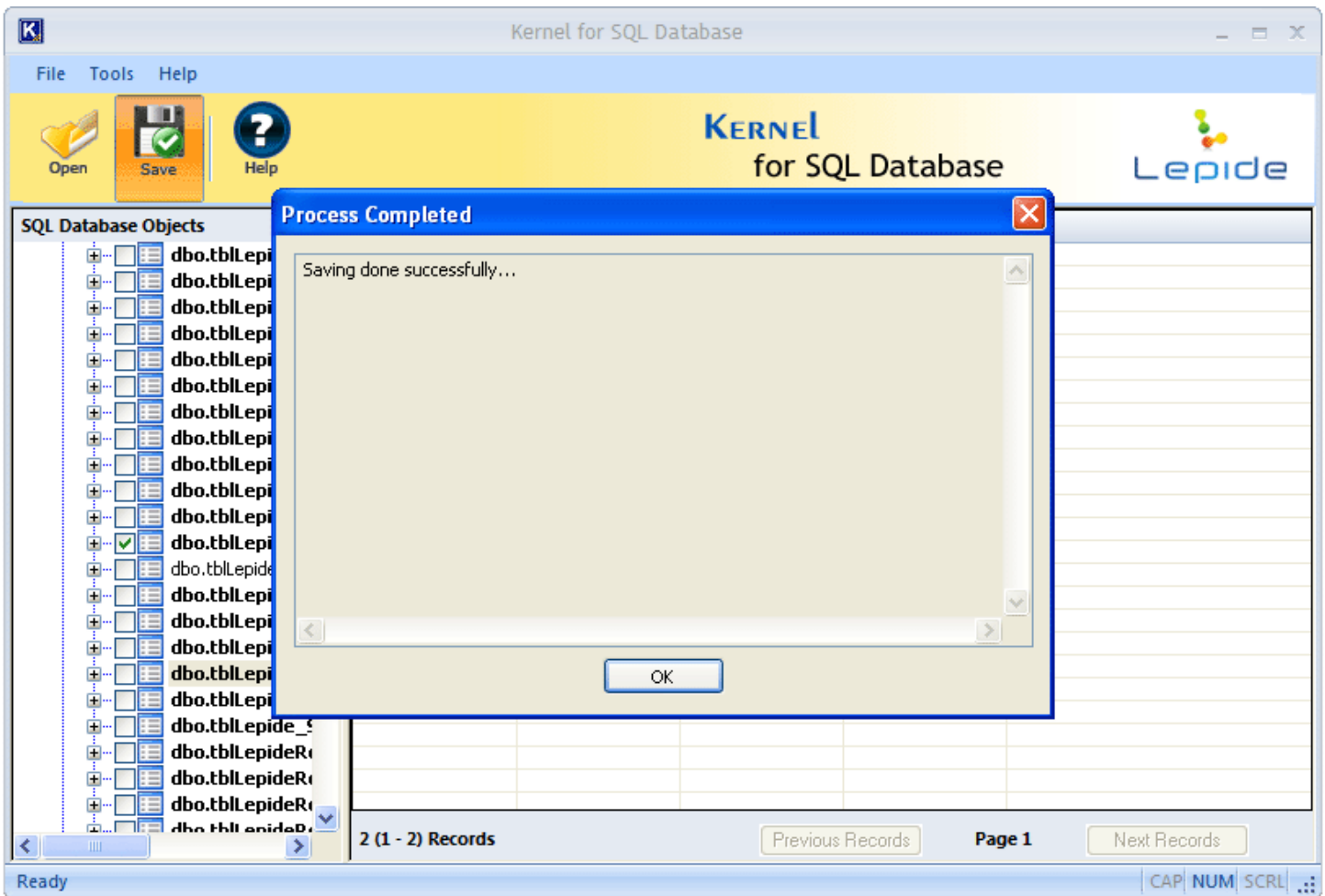


Figure 4.9: Successful Saving of Database Objects

9. Click **OK** button to close the 'Process Completed' dialog box.

## 5. Download Purchase and Register

### 5.1 Free Trial Download

Kernel for SQL Database is available for free evaluation so that the users can ensure the working of the software closely. Using free evaluation version allows you to check the features, functionality and the accuracy of the results. The evaluation version of this software is fully functional just like the full version but it restricts the user from saving the recovered objects. In order to save the entire data so recovered, you need to purchase the full version of Kernel for SQL Database.



Free version of Kernel for SQL Database can be downloaded from our website:

<https://www.nucleustechnologies.com/download-sql-recovery.php>

## 5.2 Purchase & Register

---

Purchase the full version of Kernel for SQL Database software for saving the recovered objects from SQL database .MDF files accurately. The FREE trial version of Kernel for SQL Database software allows you to preview the recovered objects but restricts from saving them.

You can purchase the Full version of Kernel for SQL Database software through our website:

<https://www.nucleustechnologies.com/buy-sql-recovery.php> (encrypted and secure site).

### Payment and Delivery

Purchase the Kernel for SQL Database software from our authorized resellers, which provide number of payment options for your ease - PayPal, FAX, Credit Card, E-cheque, Pay Order, etc.

After making the purchase transaction with our resellers, an email is sent consisting of activation details and download link of the Full version of Kernel for SQL Database comprising of the activation code. This email is sent to the email address, which you have used while processing the purchase transaction with our resellers.

We suggest you not to use false e-mail address while making the purchase transaction.

For any other details related to purchase process, software activation process, email us at: [sales@nucleustechnologies.com](mailto:sales@nucleustechnologies.com)

## 5.3 Support

---

Lepide Software Pvt. Ltd. provides round-the-clock technical support for its product range to solve technical and software queries. The software comes with an embedded help manual that can be accessed by clicking **Help** in the software main window. You can also press the **F1** key on the keyboard of your computer to access the embedded help manual of Kernel for SQL Database.

You can access the online help for Kernel for SQL Database at: <https://www.nucleustechnologies.com/Online-Helps.html>

We also have live support wherein you can chat with our software experts at: <https://www.nucleustechnologies.com/supportcenter/>

### **Telephone Support:**

+91-9818725861



1-866-348-7872 (Toll Free for USA/CANADA)

**Email Support:**

[sales@nucleustechnologies.com](mailto:sales@nucleustechnologies.com) for Sales

[support@nucleustechnologies.com](mailto:support@nucleustechnologies.com) for Support

[contact@nucleustechnologies.com](mailto:contact@nucleustechnologies.com) for General Queries





# 6. Troubleshooting

---

## 6.1 Common Issues

---

### **What is the limitation in the trial version of Kernel for SQL Database?**

The trial version of Kernel for SQL Database works almost same as that of the full version of the software such that it accurately recovers entire database objects embedded within the SQL Server database .MDF files, displays preview of all the recovered objects but restricts users from saving them. In order to save the entire recovered SQL database objects, user must purchase the full licensed version of the software.

## 6.2 Frequently Asked Questions

---

### **1. How to purchase Kernel for SQL Database?**

One can buy Kernel for SQL Database using the website:  
[www.nucleustechnologies.com/buy-sql-recovery.php](http://www.nucleustechnologies.com/buy-sql-recovery.php)

### **2. What are the two different options offered by Kernel for SQL Database?**

The two options offered by Kernel for SQL Database are - *Consider all pages as corrupted*, and *Save the tables without identity property*.

### **3. What are the supported Windows OS platforms for Kernel for SQL Database software?**

The supported Windows OS platforms for Kernel for SQL Database software are: Windows 8, Windows 7, Windows Vista, Windows XP, Windows Server 2000, Windows Server 2003, Windows Server 2008, Windows Server 2008 R2, and Windows Server 2012.

### **4. What are the supported MS SQL Server versions for Kernel for SQL Database software?**

The supported MS SQL Server versions for Kernel for SQL Database software are: SQL Server 2000, SQL Server 2005, SQL Server 2008, SQL Server 2008 R2, and SQL Server 2012.

### **5. Give the link for downloading the free trial version of Kernel for SQL Database software.**

The free trial version of Kernel for SQL Database software can be downloaded using the link:

[www.nucleustechnologies.com/download-sql-recovery.php](http://www.nucleustechnologies.com/download-sql-recovery.php)



# 7. Legal Notices

---

This section comprises the legal specification about Kernel for SQL Database and the company Lepide Software Private Limited.

## 7.1 Copyright Notice

---

Lepide Software Private Limited, Kernel for SQL Database, accompanied user manual, and documentation are copyright of Lepide Software, with all rights reserved. Under the copyright laws, this user manual cannot be reproduced in any form without the prior written permission of Lepide Software. No Patent Liability is assumed, however, with respect to the use of the information contained herein.

© LEPIDE SOFTWARE PVT LTD. All rights reserved.

## 7.2 Trademarks

---

Kernel for SQL Database ® is a copyright work of Lepide Software Private Limited.

Windows 8®, Windows 7®, Windows Vista®, Windows XP®, Windows Server 2000®, Windows Server 2003®, Windows Server 2008®, Windows Server 2008 R2®, and Windows Server 2012® are registered trademarks of Microsoft Corporation.

All other brand and product names are trademarks or registered trademarks of their respective companies.

## 7.3 Disclaimer

---

The information contained in this manual, including but not limited to any product specifications, is subject to change without notice. Lepide Software Private Limited provides no warranty with regard to this manual or any other information contained herein and hereby expressly disclaims any implied warranties of merchantability or fitness for any particular purpose with regard to any of the foregoing. Lepide Software Private Limited assumes no liability for any damages incurred directly or indirectly from any technical or typographical errors or omissions contained herein or for discrepancies between the product and the manual.

In no event shall Lepide Software Private Limited be liable for any incidental, consequential special, or exemplary damages, whether based on tort, contract or otherwise, arising out of or in connection with this manual or any other information contained herein or the use there of.

## 7.4 License Agreement

---



Kernel for SQL Database © by Lepide Software Private Limited.

### **Your Agreement to this License**

You should carefully read the following terms and conditions before using, installing, or distributing this software, unless you have a different license agreement signed by Lepide Software Private Limited. The terms and conditions of this License describe the permitted use and users of each Licensed Copy of Kernel for SQL Database. For purposes of this License, if you have a valid license, you have the right to use a single Licensed Copy of Lepide.

### **Scope of License**

Each Licensed Copy of Kernel for SQL Database may either be used by a single person or used non-simultaneously by multiple people who use the software personally installed on a single workstation. All rights of any kind in the Lepide, which are not expressly granted in this License, are entirely and exclusively reserved to and by Lepide Software. You may not rent, lease, modify, translate, reverse engineer, decompile, disassemble, or create derivative works based on, Lepide, nor permit anyone else to do so. You may not make access to Lepide available to others in connection with a service bureau, application service provider, or similar business, nor permit anyone else to do so.

### **Warranty Disclaimers and Liability Limitations**

Kernel for SQL Database, and any and all accompanying software, files, data and materials, are distributed and provided as is and with no warranties of any kind, whether expressed or implied. In particular, there is no warranty for the quality of data recovered. You acknowledge that good data processing procedure dictates that any program, including Kernel for SQL Database, must be thoroughly tested with non-critical data before there is any reliance on it, and you hereby assume the entire risk of all use of the copies of Kernel for SQL Database covered by this License. This disclaimer of warranty constitutes an essential part of this License. In addition, in no event does Lepide Software authorize you or anyone else to use Kernel for SQL Database in applications or systems where Kernel for SQL Database Failure to perform can reasonably be expected to result in a significant physical injury, or in loss of life. Any such use is entirely at your own risk, and you agree to hold Lepide Software harmless from any and all claims or losses relating to such unauthorized use.

### **General**

This License is the complete statement of the agreement between the parties on the subject matter, and merges and supersedes all other or prior understandings, purchase orders, agreements, and arrangements. This License shall be governed by the laws of the State of Delhi. Exclusive jurisdiction and venue for all matters relating to this License shall be in courts and for a located in the State of Delhi, and you consent to such jurisdiction and venue. There are no third-party beneficiaries of any promises, obligations, or representations made by Lepide Software herein. Any waiver by Lepide Software of any violation of this License by you shall not constitute, nor contribute to, a waiver by Lepide Software of any other or future violation of the same provision, or any other provision, of this License.

