



Kernel Outlook Express Password Recovery

“Recover and Restore the Lost Passwords of
Outlook Express Email Accounts”

PRODUCT GUIDE

Table of Contents

1.	Introduction to Kernel for Outlook Express Password Recovery	4
1.1	Using this Manual	4
1.2	About Kernel for Outlook Express Password Recovery	5
1.3	Salient Features	5
1.4	Who Should Use this Software?	5
2.	Getting Started	6
2.1	Installation Pre-requisites.....	6
2.2	Downloading Kernel for Outlook Express Password Recovery for the First Time	7
2.3	Install Kernel for Outlook Express Password Recovery	7
2.4	Start Kernel for Outlook Express Password Recovery	7
2.5	Uninstall Kernel for Outlook Express Password Recovery	7
3.	Software Interface	9
4.	Recovering Passwords	10
5.	Full Version	12
5.1	Requirement of Full Version.....	12
5.2	Purchasing Full Version.....	12
6.	Support.....	13
7.	Troubleshooting	14
7.1	Common Issues	14
7.2	Frequently Asked Questions	14
8.	Legal Notices	15
8.1	Copyright	15
8.2	Trademark	15
8.3	Disclaimer	15
8.4	License Agreement	15

Table of Figures

Figure 4.1: Main Window 10

Figure 4.2: Recovered Password..... 11

1. Introduction to Kernel for Outlook Express Password Recovery

Welcome to the user guide for Kernel for Outlook Express Password Recovery, the most effective and efficient password recovery software that recovers password and email addresses configured in Outlook Express. This user manual provides the step by step procedure of password recovery with Kernel for Outlook Express Password Recovery.

1.1 Using this Manual

This user manual is intended to guide users on using Kernel for Outlook Express Password Recovery. We suggest that first time users should read this user manual completely and carefully before proceeding to use the software. However an experienced can use the table of contents to find out information related to the tasks that you need to perform with Kernel for Outlook Express Password Recovery.

You can use the table of contents to navigate through different sections of this user manual. The table of contents lists all the sections that are contained in this user manual in chronological order. The user manual comprises the following sections:

- Introduction
- Getting Started
- Software Interface
- Recovering Password
- Full Version
- Support
- Troubleshooting
- Legal Notices

There are certain abbreviations which have been used throughout this manual. For clear understanding of the contents of this user manual, please go through the list of abbreviations, mentioned below, before reading the manual.

1.1.1 List of Abbreviations

OE: Outlook Express

MS: Microsoft

RAM: Random Access Memory

MB: Mega-Byte

GB: Giga-Byte

1.2 About Kernel for Outlook Express Password Recovery

Kernel for Outlook Express Password Recovery is a powerful and 100% result oriented software to recover lost or forgotten passwords of password protected MS Outlook Express accounts. It effectively restores the lost or forgotten passwords along with the email addresses of Outlook Express email accounts.

The software is capable to retrieve lost or forgotten passwords of all the email accounts configured in the Outlook Express

Kernel for Outlook Express Password Recovery restores the actual password that helps to unprotect the Outlook Express email accounts. It is incorporated with effectual password recovery engine to recover password of any length and complexity.

1.3 Salient Features

Salient features of Kernel for Outlook Express Password Recovery include:

- Efficient embedded repair algorithms to quickly recover lost or forgotten passwords
- Interactive and attractive graphical user interface
- Retrieves passwords along with the email addresses
- Recovers passwords of all the emails accounts configured in Outlook Express
- Supports recovery of password from Outlook Express 4.0 and above
- Free demo to analyze the capabilities of the tool before purchasing it
- Instant password recovery
- Supports to multilingual password recovery

1.4 Who Should Use this Software?

The capability and potential of Kernel for Outlook Express Password Recovery under a minute despite the length and complication of the lost password finds its best choice for the users of Outlook Express. It is helpful for Outlook Express users who have configured various password protected email accounts in the Outlook Express and were unable to recall the passwords to access their email accounts.

Kernel for Outlook Express also benefits those users who have secured their email accounts with strong encrypted passwords. The password could have been lost or forgotten due to complexity of password or because of numerous email accounts were configured in the Outlook Express.

2. Getting Started

Now that you have understood the features and potential of Kernel for Outlook Express Password Recovery, you are ready to get hands on experience of the software. To start recovering passwords of Outlook Express email accounts, you will first need to download and install this software.

It is strongly recommended that before installing Kernel for Outlook Express Password Recovery, you should go through the installation pre-requisites for the software to ensure that your computer is appropriately configured to run the software.

2.1 Installation Pre-requisites

The various pre-requisites for installing and running Kernel for Outlook Express Password Recovery can be broadly classified into two major categories – Hardware requirements and Software requirements.

2.1.1 Hardware Requirements:

The hardware requirements for installing the software are as follows:

- Pentium Class Processor
- Minimum 64MB RAM (128 MB recommended)
- 10MB for Software installation

2.1.2 Software Requirements:

The software requirements for installing the software can further be grouped into two categories – Operating system requirements and Outlook Express version requirements.

The requirements are as follows:

2.1.2.1 Operating System Requirements

Supported Operating Systems:

- Windows Vista
- Windows XP
- Windows 2003
- Windows 2000

2.1.2.2 Outlook Express Version Requirements

Supported Outlook Express versions


- Outlook Express 4.0 and above

2.2 Downloading Kernel for Outlook Express Password Recovery for the First Time

After checking your computer with the prescribed system requirements for Kernel for Outlook Express Password Recovery, you can download and install the software on your computer. You can buy the full version of the software from any one of our authorized resellers– Element5, Asknet and 2CO.

If you want to try using Kernel for Outlook Express Password Recovery before buying it, you can download the evaluation version from the following link:

<http://www.nucleustechnologies.com/download-oe-password-recovery.php>

 You can recover first two characters of the password by using the evaluation version of Kernel for Outlook Express Password Recovery; however, the recovered password will display the characters '****' instead of the real characters until you purchase full version of the software.

2.3 Install Kernel for Outlook Express Password Recovery

After downloading the installer file for Kernel for Outlook Express Password Recovery, you can install the software by running the file. To install Kernel for Outlook Express Password Recovery:

1. Double-click the Kernel for Outlook Express Password Recovery installer. Follow the on-screen instructions.

The **Setup Installation Complete** screen will be displayed.

2. Click **Finish** to launch the software.

2.4 Start Kernel for Outlook Express Password Recovery

To start Kernel for Outlook Express Password Recovery

Click the **Start → All Programs → Kernel for Outlook Express Password Recovery**

Alternatively, you can launch Kernel for Outlook Express Password Recovery by double-clicking the shortcut icon available on the Desktop and Quick Launch icon.


2.5 Uninstall Kernel for Outlook Express Password Recovery

You may need to uninstall Kernel for Outlook Express Password Recovery. To uninstall Kernel for Outlook Express Password Recovery

1. Click the **Start → All Programs → Kernel for Outlook Express Password Recovery → Uninstall Kernel for Outlook Express Password Recovery**

A warning message will be displayed.

2. Click **Yes** to uninstall Kernel for Outlook Express Password Recovery

 Before proceeding to uninstall Kernel for Outlook Express Password Recovery, you must ensure that the software is not running.

You can alternatively uninstall Kernel for Outlook Express Password Recovery from the **Control Panel** by performing the following steps:

1. Click the **Start Menu → Control Panel** and then double click the **Add or Remove Programs** icon.
2. Select **Kernel for Outlook Express Password Recovery** and click **Remove**.




A warning message will be displayed.

3. Click **Yes** to uninstall Kernel for Outlook Express Password Recovery.

3. Software Interface

Now that Kernel for Outlook Express Password Recovery has been installed on your computer, you can start using the software after getting acquainted with the tool bar of the software.

Read the information in the table below to find out about the tool-bar buttons:

Button	Button Name	Button Description
	Recover	Select to recover the lost or forgotten passwords and email addresses
	Help	Select to view help file(s) of the software
	About	Select to view the version and other information related to the software

4. Recovering Passwords

Now that you have complete familiarity of the user interface of Kernel for Outlook Express Password Recovery, you are ready to recover passwords of email accounts configured in Outlook Express. To recover passwords and email addresses.

1. Launch Kernel for Outlook Express Password Recovery.

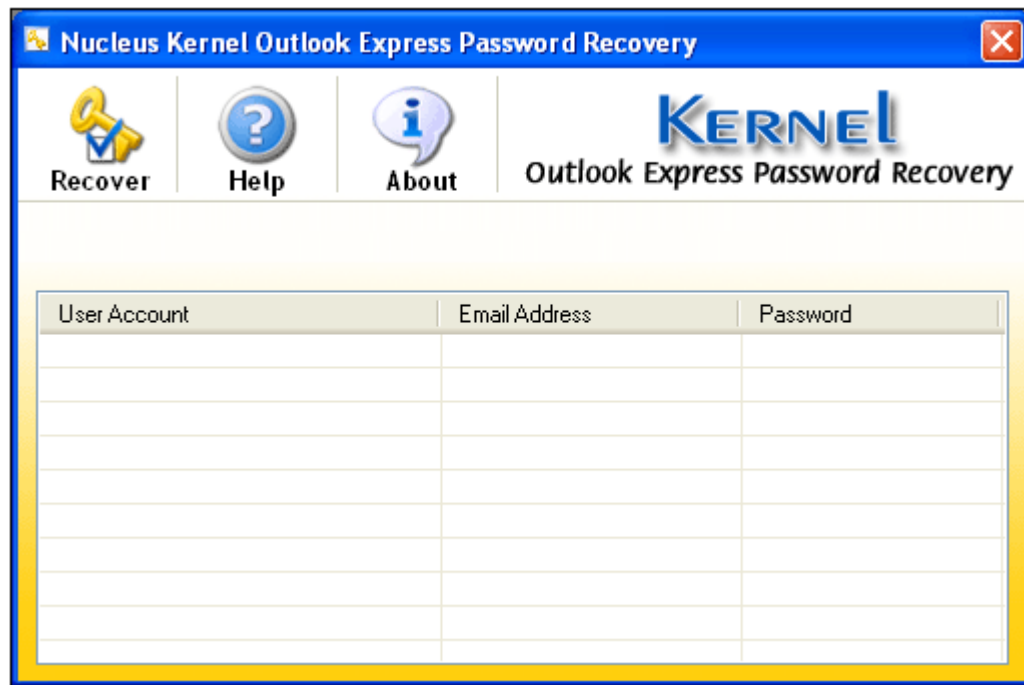


Figure 4.1: Main Window

2. Click the **Recover** button to recover the password of the email accounts.

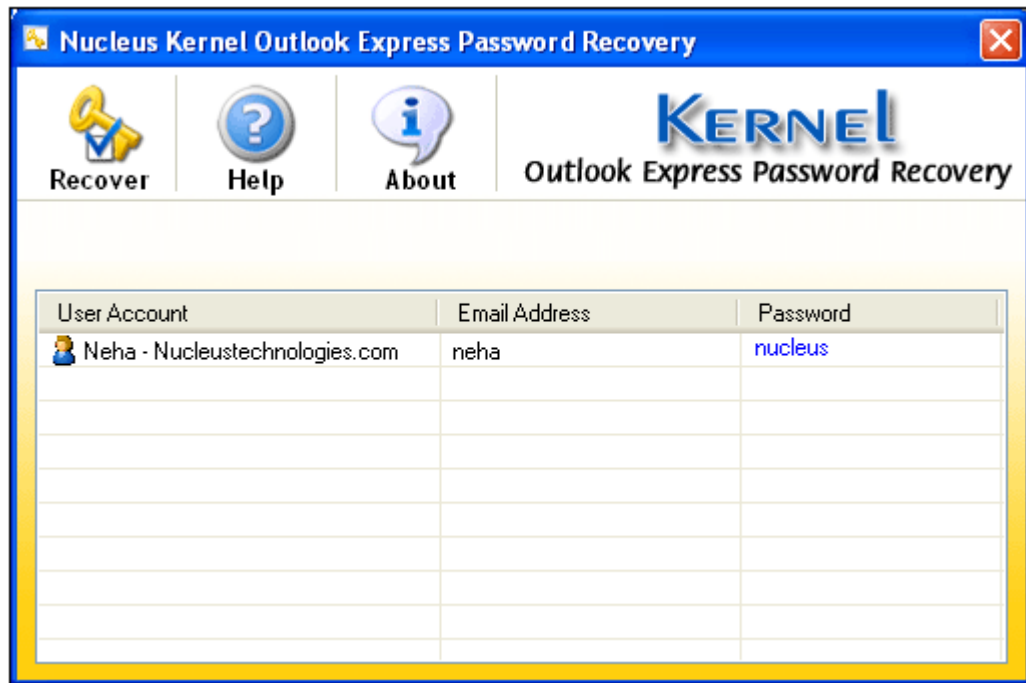


Figure 4.2: Recovered Password

Kernel for Outlook Express Password Recovery displays all the existing accounts with the passwords and user logins configured in Outlook Express.

3. Select and right click the respective user account to copy the password to the clipboard.

5. Full Version

Although you can use Kernel for Outlook Express Password Recovery evaluation version for free and experience the capabilities of the software, there is some limitation in the evaluation version of the software.

5.1 Requirement of Full Version

By using the evaluation version of Kernel for Outlook Express Password Recovery, you can recover password; however, you cannot view the original characters of the complete password. The asterisks '***' will be displayed instead of the actual characters of the password, software will display first two original characters of the password in the evaluation version.

You will need to buy the full version of the software to view the original characters of the password.

5.2 Purchasing Full Version

You can buy the full version of Kernel for Outlook Express Password Recovery from any one of our authorized resellers – Element5, Asknet and 2CO.

As soon the purchase transaction with our resellers gets completed, our sales team will send you an email comprising the URL to download the full version of Kernel for Outlook Express Password Recovery and activation details of the software.

6. Support

We have an extensive and efficient support system in place to assist our customers with all issues related to using Kernel for Outlook Express Password Recovery. The software comes with an embedded help manual that can be accessed by clicking **Help→Software Help** in the menu-bar. You can also press the F1 key on the keyboard of your computer to access the embedded help of Kernel for Outlook Express Password Recovery.

You can access the online help for Kernel for Outlook Express Password Recovery at <http://www.nucleustechnologies.com/Online-Helps.html>

We also have live support wherein you can chat with our software experts at <http://www.nucleustechnologies.com/Support.html>

To talk on phone with our software experts call:

Help line:

+91-9818725861

1-866-348-7872 (Toll Free for USA/CANADA)

You can also email us about your queries at;

sales@nucleustechnologies.com for Sales

support@nucleustechnologies.com for Support

contact@nucleustechnologies.com for General Queries

7. Troubleshooting

This section deals with your generic and specific queries pertaining to using Kernel for Outlook Express Password Recovery.

7.1 Common Issues

Why does Kernel for Outlook Express Password Recovery have limitations in evaluation copy?

The free evaluation version of Kernel for Outlook Express Password Recovery is intended to enable you to experience the capabilities of the software. You will need to buy the software to view the characters hides behind the asterisks '*****'

7.2 Frequently Asked Questions

How to Buy Kernel for Outlook Express Password Recovery?

You can buy Kernel for Outlook Express Password Recovery online at <http://www.nucleustechnologies.com/buy-oe-password-recovery.php>

I have lost my full version for Kernel for Outlook Express Password Recovery. Can you help me?

Please email us at sales@nucleustechnologies.com. Please include your name, address, email address, and order confirmation number (if you have it). We will be happy to help you.

8. Legal Notices

This section comprises the legal specification about Kernel for Outlook Express Password Recovery and the company NUCLEUS DATA RECOVERY.COM PRIVATE LIMITED

8.1 Copyright

NUCLEUS DATA RECOVERY.COM PRIVATE LIMITED, Nucleus Kernel accompanied user manual and documentation are copyright of NUCLEUS DATA RECOVERY.COM PRIVATE LIMITED, with all rights reserved. Under the copyright laws, this user manual cannot be reproduced in any form without the prior written permission of NUCLEUS DATA RECOVERY.COM PRIVATE LIMITED. No Patent Liability is assumed, however, with respect to the use of the information contained herein.

© NUCLEUS DATA RECOVERY.COM PRIVATE LIMITED. All rights reserved.

8.2 Trademark

Nucleus Kernel ® is a copyright work of NUCLEUS DATA RECOVERY.COM PRIVATE LIMITED

Windows 95®, Windows 98®, Windows ME®, Windows NT®, Windows 2000 Server®, Windows 2000 Advanced Server®, Windows 2003 Server®, Windows XP®, Windows Vista, MS-DOS and MS Office are registered trademarks of Microsoft Corporation.

All other brand and product names are trademarks or registered trademarks of their respective companies.

8.3 Disclaimer

The Information contained in this manual, including but not limited to any product specifications, is subject to change without notice. NUCLEUS DATA RECOVERY.COM PRIVATE LIMITED provides no warranty with regard to this manual or any other information contained herein and here by expressly disclaims any implied warranties of merchantability or fitness for any particular purpose with regard to any of the foregoing NUCLEUS DATA RECOVERY.COM PRIVATE LIMITED assumes no liability for any damages incurred directly or indirectly from any technical or typographical errors or omissions contained herein or for discrepancies between the product and the manual. In no event shall NUCLEUS DATA RECOVERY.COM PRIVATE LIMITED, be liable for any incidental, consequential special, or exemplary damages, whether based on tort, contract or otherwise, arising out of or in connection with this manual or any other information contained herein or the use there of.

8.4 License Agreement

Kernel for Outlook Express Password Recovery Copyright © by NUCLEUS DATA RECOVERY.COM PRIVATE LIMITED

Your Agreement to this License

You should carefully read the following terms and conditions before using, installing or distributing this software, unless you have a different license agreement signed by NUCLEUS DATA RECOVERY.COM PRIVATE LIMITED. The terms and conditions of this License describe the permitted use and users of

each Licensed Copy of Kernel for Outlook Express Password Recovery. For purposes of this License, if you have a valid license, you have the right to use a single Licensed Copy of Nucleus Kernel.

Scope of License

Each Licensed Copy of Kernel for Outlook Express Password Recovery may either be used by a single person or used non-simultaneously by multiple people who use the software personally installed on a single workstation. All rights of any kind in Nucleus Kernel, which are not expressly granted in this License, are entirely and exclusively reserved to and by NUCLEUS DATA RECOVERY.COM PRIVATE LIMITED. You may not rent, lease, modify, translate, reverse engineer, decompile, disassemble, or create derivative works based on, Nucleus Kernel, nor permit anyone else to do so. You may not make access to Nucleus Kernel available to others in connection with a service bureau, application service provider, or similar business, nor permit anyone else to do so.

Warranty Disclaimers and Liability Limitations

Kernel for Outlook Express Password Recovery, and any and all accompanying software, files, data and materials, are distributed and provided AS IS and with no warranties of any kind, whether expressed or implied. In particular, there is no warranty for the quality of data recovered. You acknowledge that good data processing procedure dictates that any program, including Nucleus Kernel, must be thoroughly tested with non-critical data before there is any reliance on it, and you hereby assume the entire risk of all use of the copies of Nucleus Kernel covered by this License. This disclaimer of warranty constitutes an essential part of this License. In addition, in no event does NUCLEUS DATA RECOVERY.COM PRIVATE LIMITED authorize you or anyone else to use Kernel for Outlook Express Password Recovery in applications or systems where Kernel for Outlook Express Password Recovery failure to perform can reasonably be expected to result in a significant physical injury, or in loss of life. Any such use is entirely at your own risk, and you agree to hold NUCLEUS DATA RECOVERY.COM PRIVATE LIMITED harmless from any and all claims or losses relating to such unauthorized use.

General

This License is the complete statement of the agreement between the parties on the subject matter, and merges and supersedes all other or prior understandings, purchase orders, agreements and arrangements. This License shall be governed by the laws of the State of Delhi. Exclusive jurisdiction and venue for all matters relating to this License shall be in courts and for a located in the State of Delhi, and you consent to such jurisdiction and venue. There are no third party beneficiaries of any promises, obligations or representations made by NUCLEUS DATA RECOVERY.COM PRIVATE LIMITED herein.

Any waiver by NUCLEUS DATA RECOVERY.COM PRIVATE LIMITED of any violation of this License by you shall not constitute, nor contribute to, a waiver by NUCLEUS DATA RECOVERY.COM PRIVATE LIMITED of any other or future violation of the same provision, or any other provision, of this License.