



Kernel for IncrediMail

“Convenient Way to Recover Emails and Addresses from
.IMM Files, IMH Files and .IMB Files”

PRODUCT GUIDE

Table of Contents

1.	Introduction to Kernel for IncrediMail	3
1.1	Using this Manual	4
1.2	About Kernel for IncrediMail	5
1.3	Salient Features	5
1.4	Who Should Use this Software?	5
2.	Getting Started	7
2.1	Installation Pre-requisites.....	7
2.2	Downloading Kernel for IncrediMail for the First Time	8
2.3	Install Kernel for IncrediMail	8
2.4	Start Kernel for IncrediMail.....	8
2.5	Uninstall Kernel for IncrediMail.....	8
3.	Software Interface	10
3.1	Tool-bar.....	10
3.2	Buttons Used.....	10
4.	Recovering lost mails.....	11
5.	Recovering lost address book	15
6.	Full Version	18
6.1	Requirement of Full Version.....	18
6.2	Purchasing Full Version.....	18
7.	Support.....	19
8.	Troubleshooting	20
8.1	Common Issues	20
8.2	Frequently Asked Questions	20
9.	Legal Notices	21
9.1	Copyright	21
9.2	Trademark.....	21
9.3	Disclaimer	21
9.4	License Agreement	21

Table of Figures

Figure 4.1: Main Window: Kernel for IncrediMail 11

Figure 4.2: Select File for Recovery 12

Figure 4.3: Preview of Recovered Mails..... 13

Figure 4.4: Select Folder to Save Recovered Mails..... 14

Figure 5.1: Main Window: Kernel for IncrediMail 15

Figure 5.2: Select IncrediMail Addressbook File 16

Figure 5.3: Preview of Recovered Address Book..... 17

Figure 5.4: Select Folder to Save Recovered Addressbook..... 17

1. Introduction to Kernel for IncrediMail

Welcome to the user manual for Kernel for IncrediMail, the most effective and convenient email recovery software that recovers mails from .IMM, IMH and recovers addresses from .IMB files. This user manual comprises step by step guidelines on using Kernel for IncrediMail.

1.1 Using this Manual

This user manual is intended to guide users on using Kernel for IncrediMail. We suggest that first time users should read this user manual completely and carefully before proceeding to use the software. However, if you are an experienced user, you can use the table of contents to find out information pertaining to the tasks that you need to perform by using Kernel for IncrediMail.

You can use the table of contents to navigate through different sections of this user manual. The table of contents lists all the sections that are contained in this user manual in chronological order. The user manual comprises the following sections:

- Introduction
- Getting Started
- Software Interface
- Recovering Lost Mails
- Recovering Lost Address Book Contacts
- Full Version
- Support
- Troubleshooting
- Legal Notices

Certain abbreviations have been used throughout this manual. For clear understanding of the contents of this user manual, please go through the list of abbreviations, mentioned below, before reading the manual.

1.1.1 List of Abbreviations

IMM: IncrediMail Trash

IMB: IncrediMail Address Book and Temporary Contacts

IMH: IncrediMail Data File

MS: Microsoft

RAM: Random Access Memory

MB: Mega-Byte

GB: Giga-Byte

QFSCI: Quick File System Component Identification

1.2 About Kernel for IncrediMail

Kernel Recovery for IncrediMail recovers emails from damaged, corrupt mailbox files. It successfully recovers mails from [IncrediMail .IMM Files, IMH Files] and also recovers addresses from [IncrediMail .IMB Files].

It recovers mails lost due to following reasons:

- Virus Infected or Corrupted mail files
- Accidentally deleted mails
- Media corruption where mails are stored or backed up
- Header corruption of .IMM, IMH and IMB file
- Mails emptied from the "Deleted Items" folder

Kernel for IncrediMail recovers accidentally deleted or sabotaged messages that have been also removed from the "**Deleted Items**" folder in **IncrediMail**.

1.3 Salient Features

Salient features of Kernel for IncrediMail include:

- Recover e-mails from corrupted IncrediMail file (.imh, .imm)
- Recover Address Book from corrupted IncrediMail Address book file(.imb)
- Easy to use recover e-mails and addresses in three steps
- Recover attachments with e-mail
- Employs QFSCI technology for email recovery
- User friendly graphical user interface
- Free demo to know to features and functions of the software

1.4 Who Should Use this Software?

The capability of Kernel for IncrediMail to recover emails with all its attachments from inaccessible, damaged, corrupt IncrediMail mailboxes makes it appropriate for use by professional authors, individuals,

technicians, organization level users who use IncrediMail as their email client. The software is suitable for other IncrediMail users who have lost their important email data due to accidental deletion, virus infection, header corruption, media corruption, etc.

2. Getting Started

Now that you have understood the features and potential of Kernel for IncrediMail, you are ready to get hands on experience of the software. To start the email recovery, you will first need to download and install this software.

It is strongly recommended that before installing Kernel for IncrediMail, you should go through the installation pre-requisites for the software to ensure that your computer is appropriately configured to run the software.


2.1 Installation Pre-requisites

The various pre-requisites for installing and running Kernel for IncrediMail can be broadly classified into two major categories – Hardware requirements and Software requirements.

2.1.1 Hardware Requirements:

The hardware requirements for installing the software are as follows:

- Pentium Class Processor
- Minimum 64MB RAM (128 MB recommended)
- 10MB for Software installation
- Disk Space - Enough space to save the recovered data

 You should have at-least 40 MB of free disk space if you want to repair and save a 40 MB email data.

2.1.2 Software Requirements:

The software requirements for installing the software can further be grouped into two categories– Operating system requirements and IncrediMail version requirements. The requirements are as follows:

2.1.2.1 Operating System Requirements

Supported Operating Systems:

- Windows Vista
- Windows XP
- Windows 2003
- Windows 2000

2.1.2.2 IncrediMail Version Requirements

Supported IncrediMail versions:


- IncrediMail Xe
- IncrediMail Premium

2.2 Downloading Kernel for IncrediMail for the First Time

After checking your computer with the prescribed system requirements for Kernel for IncrediMail, you can download and install the software on your computer. You can buy the full version of the software from any one of our authorized resellers– Element5, Asknet and 2CO.

If you want to try using Kernel for IncrediMail before buying it, you can download the evaluation version from the following link:

<https://www.nucleustechnologies.com/Download-Incredimail-Recovery-Software.html>

 You can recover .imm, .imh, .imb files saved on your system by using the evaluation version of Kernel for IncrediMail; however, the repaired file will not be saved until you purchase the full version of the software.

2.3 Install Kernel for IncrediMail

After downloading the installer file for Kernel for IncrediMail, you can install the software by running the file.

To install Kernel for IncrediMail:

1. Double-click the Kernel for IncrediMail installer. Follow the on-screen instructions.

The **Setup Installation Complete** screen will be displayed.

2. Click **Finish** to launch the software.

2.4 Start Kernel for IncrediMail

To start Kernel for IncrediMail:

Click the **Start → All Programs → Kernel for IncrediMail**

Alternatively, you can launch Kernel for IncrediMail by double-clicking the shortcut icon available on the Desktop and Quick Launch icon.


2.5 Uninstall Kernel for IncrediMail

You may need to uninstall and re-install Kernel for IncrediMail. To uninstall Kernel for IncrediMail:

1. Click the **Start → All Programs → Kernel for IncrediMail → Uninstall Kernel for IncrediMail**

A warning message will be displayed.

2. Click '**Yes**' to uninstall Kernel for IncrediMail.

 Before proceeding to uninstall Kernel for IncrediMail, you must ensure that the software is not running on your computer.

You can alternatively uninstall Kernel for **IncrediMail** from the **Control Panel** by performing the following steps:

1. Click the **Start Menu → Control Panel** and then double click the **Add or Remove Programs** icon.
2. Select **Kernel for IncrediMail** and click **Remove**. A warning message will be displayed.
3. Click **Yes** to uninstall Kernel for IncrediMail.

3. Software Interface

Now that Kernel for IncrediMail has been installed on your computer, you can start using the software after getting acquainted with the software interface.

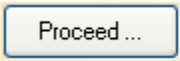


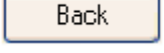
3.1 Tool-bar

The tool-bar of Kernel for IncrediMail comprises the following:

Field Name	Field Description
Home	Click to visit software homepage
Support	Click for online software support
Online Help	Click to view software online help
About	Click for software information
Buy Online	Click to buy the software

3.2 Buttons Used

Following are the buttons used throughout the repairing process.

	Click to proceed with the repairing process
	Click to stop the repairing process
	Click to save the recovered emails
	Click to go back to the previous window

4. Recovering Lost Mails

Now that you have complete familiarity of the user interface of Kernel for IncrediMail, you are ready to repair .imm, .imh files. To repair files:

1. Launch Kernel for IncrediMail.

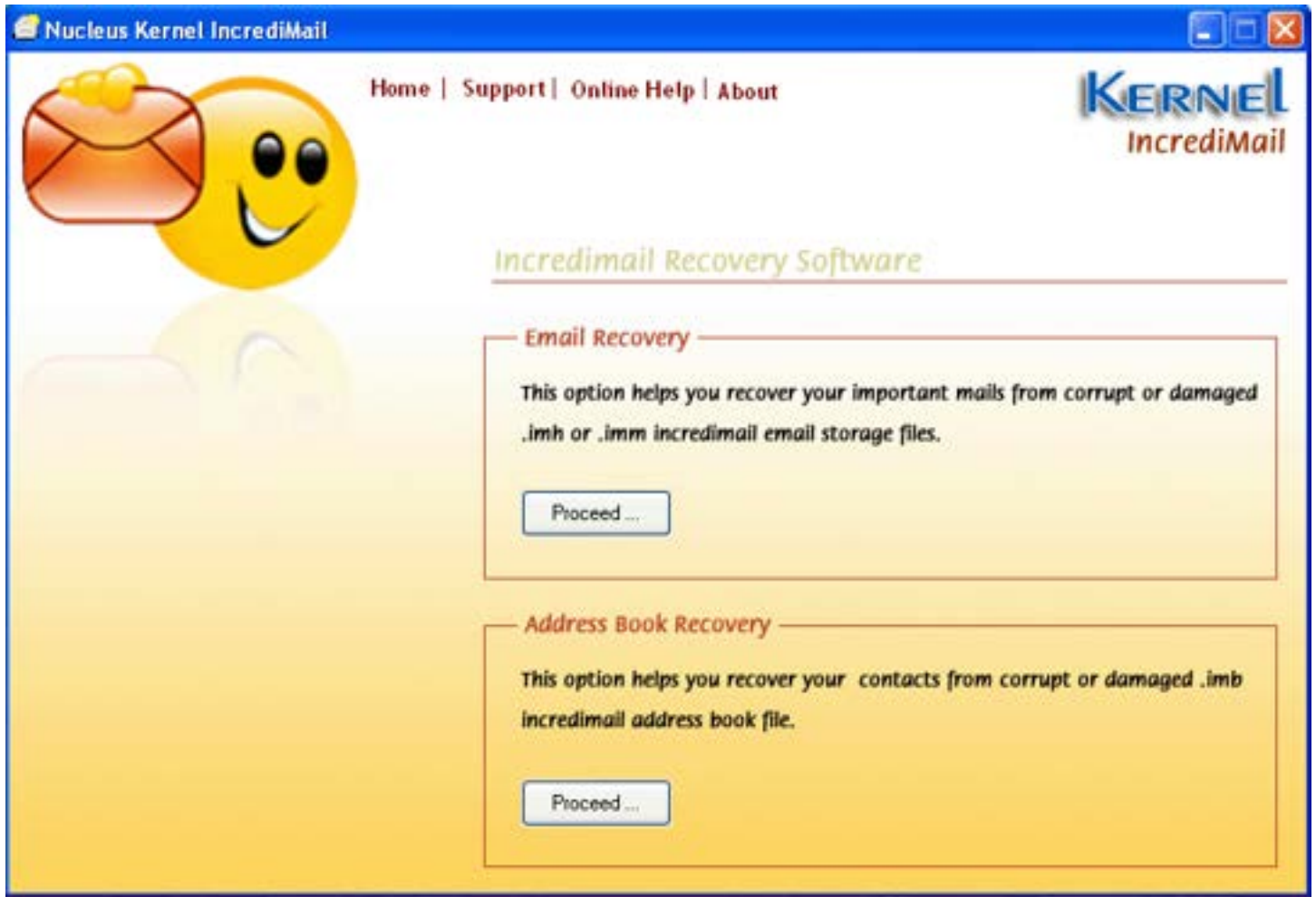


Figure 4.1: Main Window: Kernel for IncrediMail

2. From **Email Recovery** section click **Proceed** to continue.

A window pops-up which let you select the corrupt .imm file that is to be repaired.

3. Select corrupted .imm file and click **Open** button to repair the selected file.

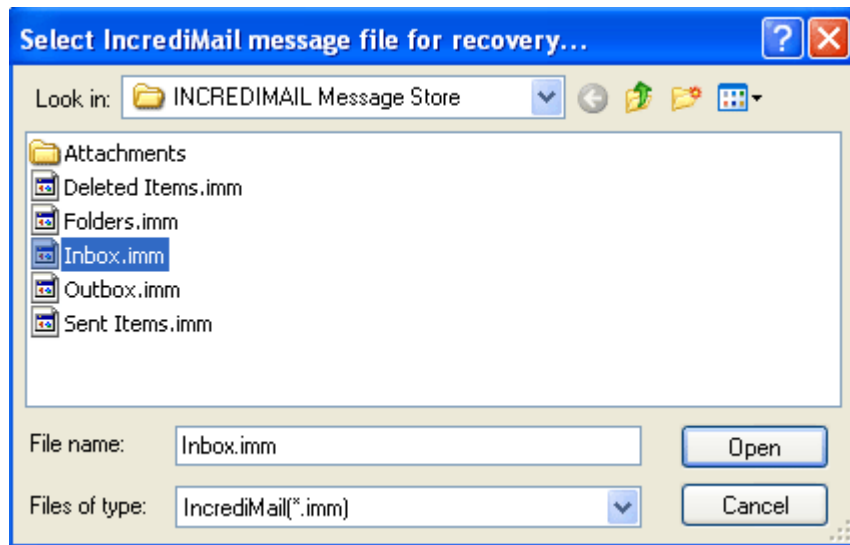


Figure 4.2: Select File for Recovery

Software starts the repairing process and shows the list of repaired mails.

4. Select the repaired mail to see the Preview. A menu appears with the option **Preview Mails**; select it to generate the preview.

After selecting the Mailbox, Kernel for IncrediMail will generate the preview.



Figure 4.3: Preview of Recovered Mails

5. Select **Save** button to save the recovered emails.
6. After selecting the Save button, **Browse for Folder** window appears which asks for desired location to save the recovered data.

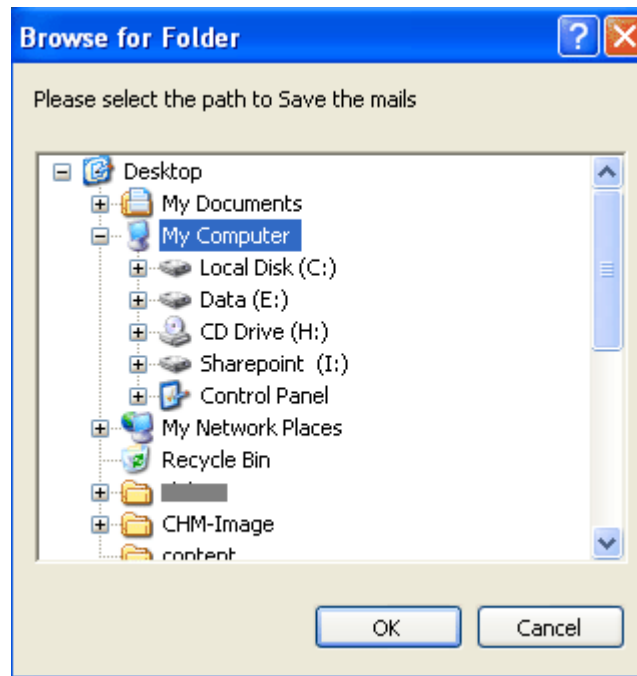


Figure 4.4: Select Folder to Save Recovered Mails

7. Choose the desired location and click **OK**.

5. Recovering Address Book Items

To repair address book (.imb) files, consider the following steps:

1. Launch Kernel for IncrediMail.

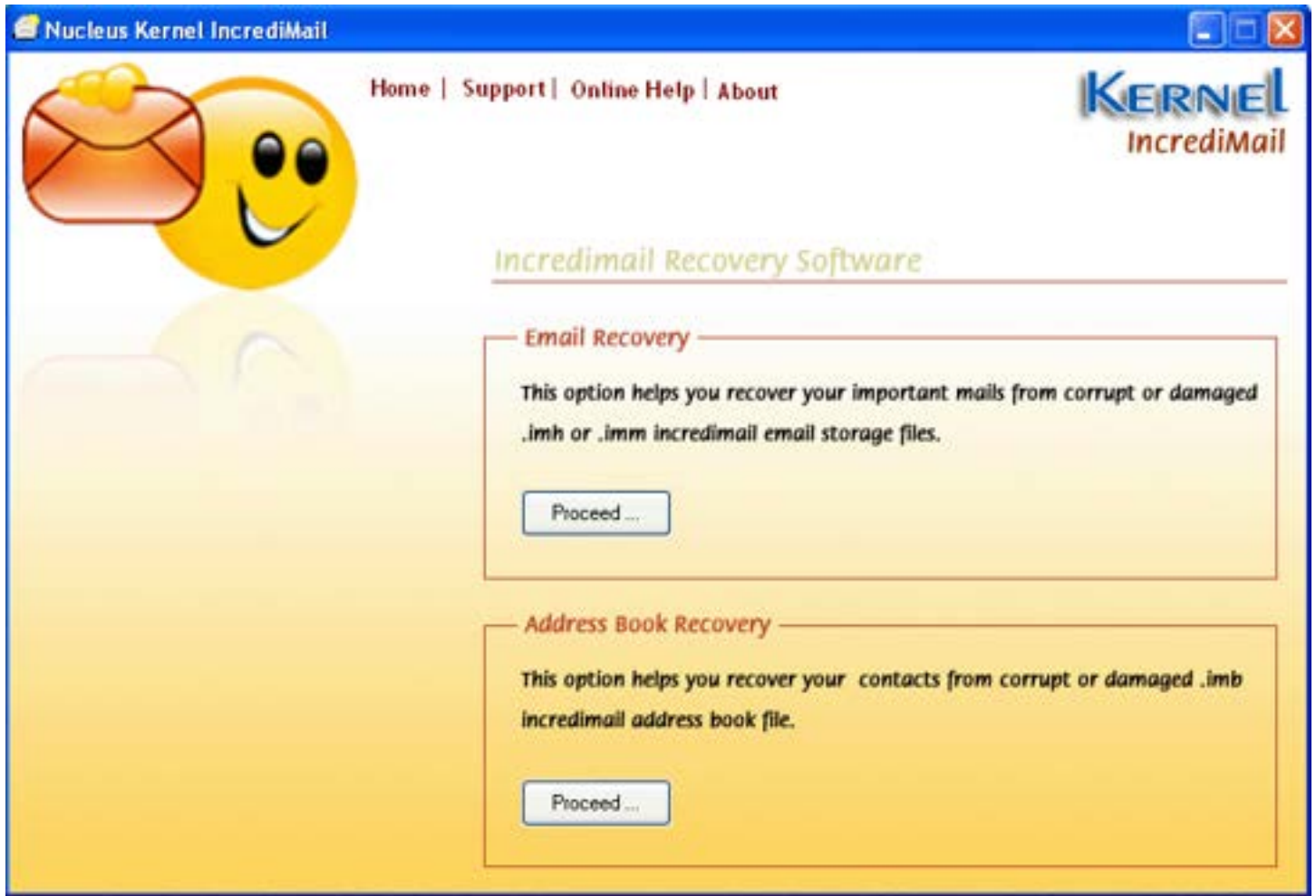


Figure 5.1: Main Window: Kernel for IncrediMail

2. From **Address Book Recovery** section to recover contacts from corrupt or damaged .imb files and click **Proceed** button to continue. A window pops-up which lets you select the corrupt .imb file that is to be repaired.
3. Select corrupted .imb file and click **Open** button to repair the selected file.

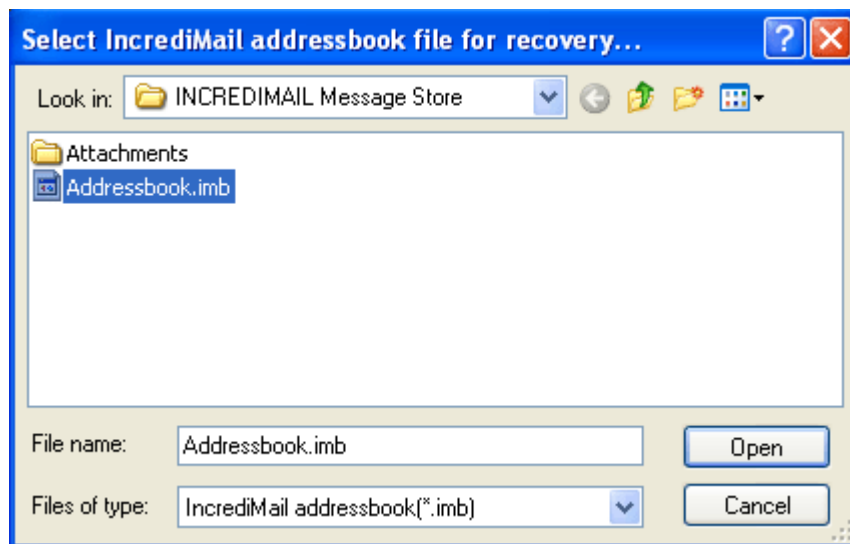


Figure 5.2: Select IncrediMail Address Book File

Software starts the repairing process and shows the list of repaired .imb files.



Figure 5.3: Preview of Recovered Address Book

4. Select **Save** button to save the files.
5. After selecting the Save button, **Browse for Folder** window appears which asks for desired location to save the recovered data.

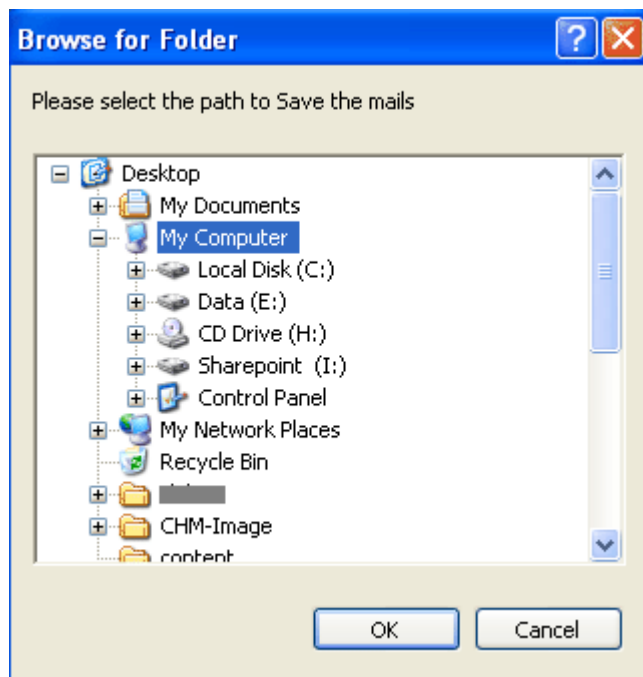


Figure 5.4: Select Folder to Save Recovered Address Book

6. Choose the desired location and click **OK**.

6. Full Version

Although you can use Kernel for IncrediMail evaluation version for free and experience the capabilities of the software, there are certain features that are not available in the evaluation version.

6.1 Requirement of Full Version

By using the evaluation version of Kernel for IncrediMail, you can repair corrupt .imh, .imm, .imb files; however, you cannot save the repaired files.

You will need to buy the full version of the software to save the recovered IncrediMail files.

6.2 Purchasing Full Version

You can buy the full version of Kernel for IncrediMail from any one of our authorized resellers – Element5, Asknet and 2CO.

As soon the purchase transaction with our resellers gets completed, our sales team will send you an email comprising the URL to download the full version of Kernel for IncrediMail and activation details of the software.

7. Support

We have an extensive and efficient support system in place to assist our customers with all issues related to using Kernel for IncrediMail. You can press the F1 key on the keyboard of your computer to access the embedded help of Kernel for IncrediMail.

You can access the online help for Kernel for IncrediMail at <https://www.nucleustechnologies.com/Online-Helps.html>

View Animated Working demo of the software at <https://www.nucleustechnologies.com/incredimail/animatedincredimail.html>

We also have live support wherein you can chat with our software experts at <https://www.nucleustechnologies.com/supportcenter/>

To talk on phone with our software experts call:

Help line:

+91-9818725861

1-866-348-7872 (Toll Free for USA/CANADA)

You can also email us about your queries at;

sales@nucleustechnologies.com for Sales

support@nucleustechnologies.com for Support

contact@nucleustechnologies.com for General Queries

8. Troubleshooting

This section deals with your generic and specific queries pertaining to using Kernel for IncrediMail.

8.1 Common Issues

Why does Kernel for IncrediMail have limitations in evaluation copy?

Kernel IncrediMail Address Book and Mails Recovery (evaluation copy) usually checks the intensity of corruption and data but it doesn't allow you to save the repaired files. Purchasing the full version of the software allows you to save repaired files in the desired location.

8.2 Frequently Asked Questions

How to Buy Kernel for IncrediMail?

You can buy Kernel for IncrediMail online at <https://www.nucleustechnologies.com/Buy-incredimail-recovery-software.html>

I have lost my full version for Kernel for IncrediMail. Can you help me?

Please email us at sales@nucleustechnologies.com. Please include your name, address, email address, and order confirmation number (if you have it). We will be happy to help you.

Is my online order safe?

Yes, you get the most secure and safest ordering option to buy your software Kernel for IncrediMail from KernelApps Private Limited. We never share your personal information with the third parties.

9. Legal Notices

This section comprises the legal specification about Kernel for IncrediMail and the company KernelApps Private Limited

9.1 Copyright

KernelApps Private Limited accompanied user manual and documentation are copyright of KernelApps Private Limited, with all rights reserved. Under the copyright laws, this user manual cannot be reproduced in any form without the prior written permission of KernelApps Private Limited. No Patent Liability is assumed, however, with respect to the use of the information contained herein.

© KernelApps Private Limited. All rights reserved.

9.2 Trademark

Kernel ® is a copyright work of KernelApps Private Limited.

Windows 95®, Windows 98®, Windows ME®, Windows NT®, Windows 2000 Server®, Windows 2000 Advanced Server®, Windows 2003 Server®, Windows XP®, MS-DOS and IncrediMail are registered trademarks of Microsoft Corporation and IncrediMail Limited.

All other brand and product names are trademarks or registered trademarks of their respective companies.

9.3 Disclaimer

The Information contained in this manual, including but not limited to any product specifications, is subject to change without notice. KernelApps Private Limited provides no warranty with regard to this manual or any other information contained herein and here by expressly disclaims any implied warranties of merchantability or fitness for any particular purpose with regard to any of the foregoing KernelApps Private Limited assumes no liability for any damages incurred directly or indirectly from any technical or typographical errors or omissions contained herein or for discrepancies between the product and the manual. In no event shall KernelApps Private Limited, be liable for any incidental, consequential special, or exemplary damages, whether based on tort, contract or otherwise, arising out of or in connection with this manual or any other information contained herein or the use there of.

9.4 License Agreement

Kernel for IncrediMail Copyright © by KernelApps Private Limited

Your Agreement to this License

You should carefully read the following terms and conditions before using, installing or distributing this software, unless you have a different license agreement signed by KernelApps Private Limited. The terms and conditions of this License describe the permitted use and users of each Licensed Copy of Kernel for IncrediMail. For purposes of this License, if you have a valid license, you have the right to use a single Licensed Copy of Kernel.

Scope of License

Each Licensed Copy of Kernel for IncrediMail may either be used by a single person or used non-simultaneously by multiple people who use the software personally installed on a single workstation. All rights of any kind in Kernel, which are not expressly granted in this License, are entirely and exclusively reserved to and by KernelApps Private Limited. You may not rent, lease, modify, translate, reverse engineer, decompile, disassemble, or create derivative works based on, Kernel, nor permit anyone else to do so. You may not make access to Kernel available to others in connection with a service bureau, application service provider, or similar business, nor permit anyone else to do so.

Warranty Disclaimers and Liability Limitations

Kernel for IncrediMail, and any and all accompanying software, files, data and materials, are distributed and provided AS IS and with no warranties of any kind, whether expressed or implied. In particular, there is no warranty for the quality of data recovered. You acknowledge that good data processing procedure dictates that any program, including Kernel, must be thoroughly tested with non-critical data before there is any reliance on it, and you hereby assume the entire risk of all use of the copies of Kernel covered by this License. This disclaimer of warranty constitutes an essential part of this License. In addition, in no event does KernelApps Private Limited authorize you or anyone else to use Kernel for IncrediMail in applications or systems where Kernel for IncrediMail failure to perform can reasonably be expected to result in a significant physical injury, or in loss of life. Any such use is entirely at your own risk, and you agree to hold KernelApps Private Limited harmless from any and all claims or losses relating to such unauthorized use.

General

This License is the complete statement of the agreement between the parties on the subject matter, and merges and supersedes all other or prior understandings, purchase orders, agreements and arrangements. This License shall be governed by the laws of the State of Delhi. Exclusive jurisdiction and venue for all matters relating to this License shall be in courts and for a located in the State of Delhi, and you consent to such jurisdiction and venue. There are no third party beneficiaries of any promises, obligations or representations made by KernelApps Private Limited herein.

Any waiver by KernelApps Private Limited of any violation of this License by you shall not constitute, nor contribute to, a waiver by KernelApps Private Limited of any other or future violation of the same provision, or any other provision, of this License.