



Kernel for  
OLM to PST

Installation &  
Configuration Guide

## Table of Contents

1.	About Kernel for OLM toPST.....	5
1.1	About the Manual .....	5
1.2	Introduction to Kernel for OLM to PST.....	5
1.3	Salient Features.....	6
1.4	Benefits of Kernel for OLM to PST .....	6
1.5	System Requirements .....	6
2.	Getting started with the User Interface .....	9
2.1	Welcome Screen of the Software .....	9
2.2	Menu Bar .....	10
2.3	Tool Bar .....	11
2.4	Left Pane.....	11
2.5	Right Pane .....	12
4.	Using Kernel for OLM toPST .....	16
4.1	Converting OLM File.....	16
4.2	Searching OLM File .....	21
4.3	Saving Output File .....	26
5.	Download, Purchase and Register .....	44
5.1	Free Trial Download .....	44
5.2	Purchase & Register .....	44
5.3	Support.....	44
6.	Troubleshooting .....	46
6.1	Common Issues.....	46
6.2	Frequently Asked Questions .....	46
7.	Legal Notices .....	47
7.1	Copyright Notice.....	47
7.2	Trademarks .....	47
7.3	Disclaimer .....	47
7.4	License Agreement .....	47

## Table of Figures

Figure 2.1: Welcome Screen of Kernel for OLM to PST Software.....	9
Figure 2.2: File Menu.....	10
Figure 2.3: View Menu .....	10
Figure 2.4: Help Menu .....	11
Figure 2.5: Left Pane.....	12
Figure 2.6: Right Pane displaying items of a selected folder .....	12
Figure 2.7: Right Pane displaying details of selected email item .....	13
Figure 4.1: Main Window of the software after launching the product .....	16
Figure 4.2: Search OLM File Interface .....	17
Figure 4.3: Searching for OLM file.....	18
Figure 4.4: Enlisting the files found in the selected drive .....	18
Figure 4.5: Figure depicting selected OLM file.....	19
Figure 4.6: Displaying successful completion of scanning process .....	20
Figure 4.7: Displaying details of retrieved data.....	21
Figure 4.8: Searching for OLM Files.....	22
Figure 4.9: Specifying the Search Criteria .....	23
Figure 4.10: Searching in Progress.....	24
Figure 4.11: Displaying Searched Items .....	25
Figure 4.12: Saving Options for Searched Items.....	26
Figure 4.13: Selecting PST File option to convert the OLM file.....	27
Figure 4.14: Applying filters to the OLM data.....	28
Figure 4.15: PST file Split options .....	29
Figure 4.16: Selecting a destination path to save the PST file.....	30
Figure 4.17: Specifying a location to save the PST file.....	31
Figure 4.18: Saving the PST files to exact location .....	31
Figure 4.19: Notification displayed after saving the file .....	32
Figure 4.20: Selecting MSG option from the Output type .....	33

Figure 4.21: Applying specific filters to the OLM file .....	34
Figure 4.22: Selecting a destination path to save the MSG file.....	35
Figure 4.23: Specifying the location for saving the MSG file.....	36
Figure 4.24: Software converting OLM data to MSG format .....	37
Figure 4.25: Showing the saved result at desired location .....	38
Figure 4.26: Selecting EML option from Output type .....	39
Figure 4.27: Applying specific filters to the OLM data.....	40
Figure 4.28: Specifying the Saving Path Location for saving the EML files .....	41
Figure 4.29: Finalizing a location to save EML file.....	41
Figure 4.30: Software saving OLM file to EML format .....	42
Figure 4.31: Displaying the location for saved EML files.....	43

# 1. About Kernel for OLM to PST

## 1.1 About the Manual

Welcome to the user manual of Kernel for OLM to PST, an appropriate tool that allows accessing Outlook for Mac emails in MS Outlook platform. The tool easily imports Outlook for Mac data into MS Outlook by converting the user mailboxes. The tool efficiently performs email migration as well as recovers corrupted OLM files. The utility allows user previewing the recovered data and restores it in a new PST file that can be easily accessed with MS Outlook. This user manual guides users about using the tool effectively. It is recommended that novice as well as experienced users should carefully go through this user manual before using the software. A user who is well aware of the software can even use table of contents for finding the particular portion of manual. The table of contents enlists all the sections described in this user manual from where one can navigate through its different sections. The user manual consists of step-by-step guidelines for using Kernel for OLM to PST. The user manual consists of the following sections:

- About Kernel for OLM to PST
- Getting started with the User Interface
- Installing and Uninstalling Kernel for OLM to PST
- Using Kernel for OLM to PST
- Download, Purchase and Register
- Troubleshooting
- Legal Notices

## 1.2 Introduction to Kernel for OLM to PST

Kernel for OLM to PST is an advanced, effective, and powerful software that converts Outlook for Mac emails to MS Outlook accurately and flawlessly. The software converts all user mailbox data including emails, contacts, calendars, tasks, notes, journals, appointments, etc. to MS Outlook PST file format. The software offers easy-to-use, highly interactive, self-descriptive, user-friendly graphical user interface such that non-technical users can easily operate it without any technical training. The software is embedded with advanced algorithms for performing easy email migration process of conversion from OLM to PST. The software performs the entire conversion process in three simple steps – Takes the OLM file as an input, Recovers data from the OLM file and Restores the recovered data in a new PST file that can be accessed with MS Outlook. The software is available as a free trial version such that users can evaluate the features, functionalities and capabilities of the software before making the actual purchase.

## 1.3 Salient Features

Some of the key features of Kernel for OLM to PST are as follows:

- Efficiently converts Outlook for Mac emails to MS Outlook platform.
- Recovers corrupted or damaged OLM file and extracts data from it.
- Recovers emails, contacts, calendars, hyperlinks, email attachments and others from OLM file with complete accuracy.
- Displays preview of recovered data in a tree-like structure.
- User can terminate the current process while generating items from recovered folder.
- Allows user to save the recovered folder items as HTML file.
- Maintains original structure, formatting, properties and Meta data after conversion. •

Allows user to save the recovered data date-wise as per user's requirement.

- Offers options for saving the recovered items in PST, MSG and EML file formats.
- Supports all versions of MS Outlook and Outlook for Mac.
- Offers easy-to-use, simple, self-descriptive, attractive graphical user interface. No technical skills required for operating the software.
- Supports 32-bit and 64-bit Windows operating systems.
- Available as free demo version.
- Offers round-the-clock technical support.

## 1.4 Benefits of Kernel for OLM to PST

Kernel for OLM to PST offers numerous benefits to the users. Some of them are as follows:

- Allows viewing Outlook for Mac emails in Microsoft Windows platform.
- Reduces installation cost of Mac Operating systems for accessing Outlook for Mac emails.
- Outlook for Mac OLM files can be accessed outside the Mac environment.
- Helps creating backups of OLM files.

## 1.5 System Requirements

Your computer system must have the appropriate configuration before installing and running Kernel for OLM to PST. Following are the minimum system requirements that a system should possess for successfully installing the Kernel for OLM to PST software.

### **Basic System Requirements**

- Pentium Class Processor
- Minimum 64 MB RAM (128MB Recommended)
- 10 MB free disk space for software installation •

Enough disk space to save recovered data

### **Supported Windows OS Platforms (Both 32-bit and 64-bit)**

- Windows 10
- Windows 8.1
- Windows 8
- Windows 7
- Windows Vista
- Windows XP
- Windows 2003
- Windows 2000
- Windows 98
- Windows 95
- Windows Server 2003 (All Service Packs)
- Windows Server 2008
- Windows Server 2008R2
- Windows Server 2012

**Supported MS Outlook Versions (Both 32-bit and 64-bit)**

- MS Outlook 97
- MS Outlook 98
- MS Outlook 2000
- MS Outlook 2003
- MS Outlook 2007
- MS Outlook 2010
- MS Outlook 2013
- MS Outlook 2016
- MS Outlook 2019

**Supported Outlook for Mac: All Versions**

## 2. Getting started with the User Interface

## 2.1 Welcome Screen of the Software

Kernel for OLM to PST software offers user-friendly, attractive graphical user interface. When the software is launched, “Source file selection” pop-up window appears by default.

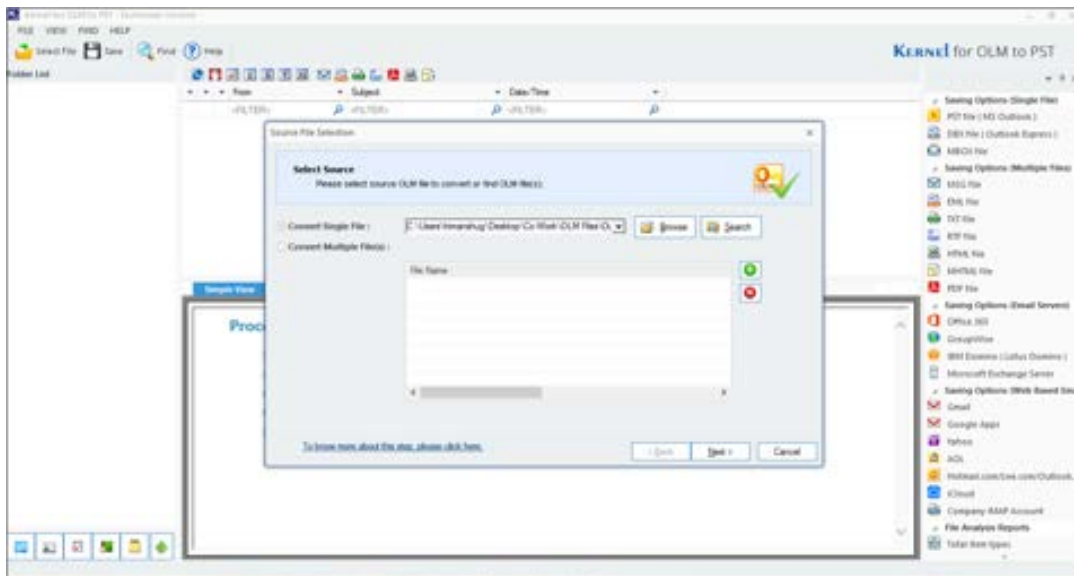


Figure 2.1: Welcome Screen of Kernel for OLM to PST Software

## 2.2 Menu Bar

The Menu bar of Kernel for OLM to PST comprises only four menus:

- File Menu
- View Menu
- Help Menu

### File Menu

**File** menu of the Kernel for OLM to PST software appears, as shown in the following figure:

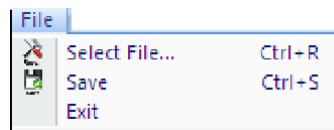


Figure 2.2: File Menu

Following table enlists the options available in the **File** menu:

Option	Description
Select File	Opens dialog box to browse and select OLM file
Save	Saves the output data at specific location
Exit	Exits from the application

### View Menu

**View** menu of the Kernel for OLM to PST software appears, as shown in the following figure:

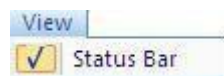


Figure 2.3: View Menu

Following table enlists the option available in the **View** menu:

Option	Description
Status Bar	Hides or displays the Status Bar

### Help Menu

**Help** menu of Kernel for OLM to PST software appears, as shown in the following figure:







Figure 2.4: Help Menu

Following table enlists the options available in the **Help** menu:

Option	Description
About	Displays support information about the software
Software Help	Launches user's help manual for Kernel for OLM to PST

## 2.3 Tool Bar

The Tool bar is displayed just below the Menu bar section of the software interface and consists of buttons that work as shortcuts for various options available in the main menu of the software. The buttons assist users to easily perform the operations that can also be performed by Menu bar options. Following table enlists the buttons available on the Tool bar of the Kernel for OLM to PST software:

Button	Button Name	Description
	Select File	This button opens dialog box to browse and select corrupt OLM file.
	Find	This button opens dialog box to search OLM file
	Save	Click this button to save the recovered data at specified location.
	Help	Click this button to launch user's help manual of the software.

## 2.4 Left Pane

The left pane of Kernel for OLM to PST software displays the retrieved folders of OLM file in a tree-like structure. You can view the retrieved folders and navigate through them.

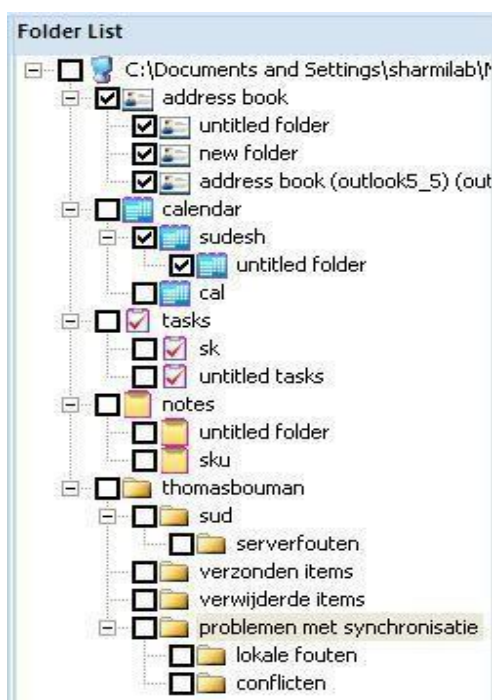


Figure 2.5: Left Pane

## 2.5 Right Pane

The right pane of Kernel for OLM to PST displays the email items in the folder or file selected from the Left Pane. The Right Pane is again divided into two different panes (as shown in the images below):

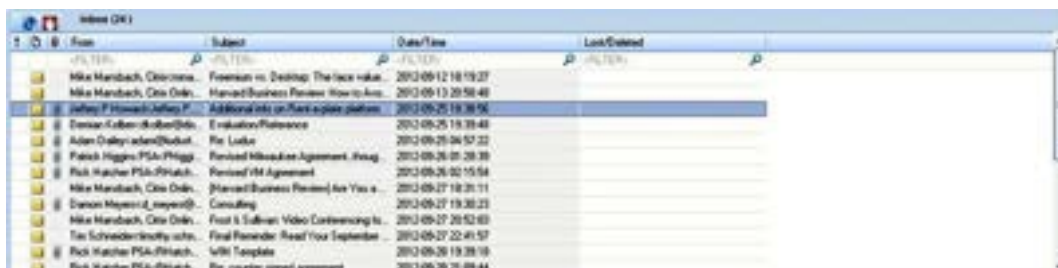


Figure 2.6: Right Pane displaying items of a selected folder



Figure 2.7: Right Pane displaying details of selected email item

## 3. Install and Uninstall

### 3.1 Installing Kernel for OLM to PST

After being familiar with the software overview, key features, and system requirements let us install the Kernel for OLM to PST software. The software is easy to install and involves few simple steps to configure it. However, before installing the software make sure that the software installer file is available on your computer. If the file is not available on your computer then you can download it from our Website:

<https://www.nucleustechologies.com/olm-to-pst.html>

After you have downloaded the installer file, execute the following steps to install the software:


1. Double-click the Kernel for OLM to PST installer file.
2. Follow the on-screen instructions. When the installation process completes “Setup Installation Complete” message appears on the software installation screen.
3. Click the **Finish** button to launch the software.

After you have completed the software installation process, a shortcut to start the software will be added in the Windows Start program menu. You can start the software from Windows Start program menu. You can also create desktop icon of the software from where you can start the software by double-clicking the icon.

### 3.2 Uninstalling Kernel for OLM to PST

Kernel for OLM to PST software can be uninstalled from the computer system by using one of the following two methods:

- Uninstall from Windows Start Menu
- Uninstall from Control Panel

 **Note:** Before starting the uninstallation process, make sure that the Kernel for OLM to PST software is not in use.

#### Uninstall from the Windows Start menu

Execute the following steps to uninstall Kernel for OLM to PST from Windows Start menu:

1. Click **Start > All Programs > Kernel for OLM to PST > Uninstall Kernel for OLM to PST**. A warning message before uninstalling the software will be displayed on the screen.
2. Click **Yes** button to uninstall the software.
3. Click **OK** button.

Kernel for OLM to PST is successfully uninstalled from your computer system.

### Uninstall from Control Panel

Execute the following steps to uninstall Kernel for OLM to PST from Control Panel:

1. Click **Start > Control Panel**. The Control Panel window appears.
2. Double-click the **Add or Remove Programs** icon. A list of the programs installed on your computer system appears.
3. Select **Kernel for OLM to PST** and click the **Remove** button. A warning message before uninstalling the software will be displayed on the screen.
4. Click **Yes** button to uninstall the software.
5. Click **OK** button.

Kernel for OLM to PST is successfully uninstalled from your computer system.

## 4. Using Kernel for OLM to PST

### 4.1 Converting OLM File

Using Kernel for OLM to PST, you can easily and effectively convert Outlook for Mac OLM files to MS Outlook PST files. To convert OLM to PST or access data of corrupted OLM file, you have to first extract the data from OLM file. Follow the basic steps given below to retrieve data from OLM file:

**Step 1:** Click **Start > All Programs > Kernel for OLM to PST > Kernel for OLM to PST** to launch the software. The main window of the software appears.

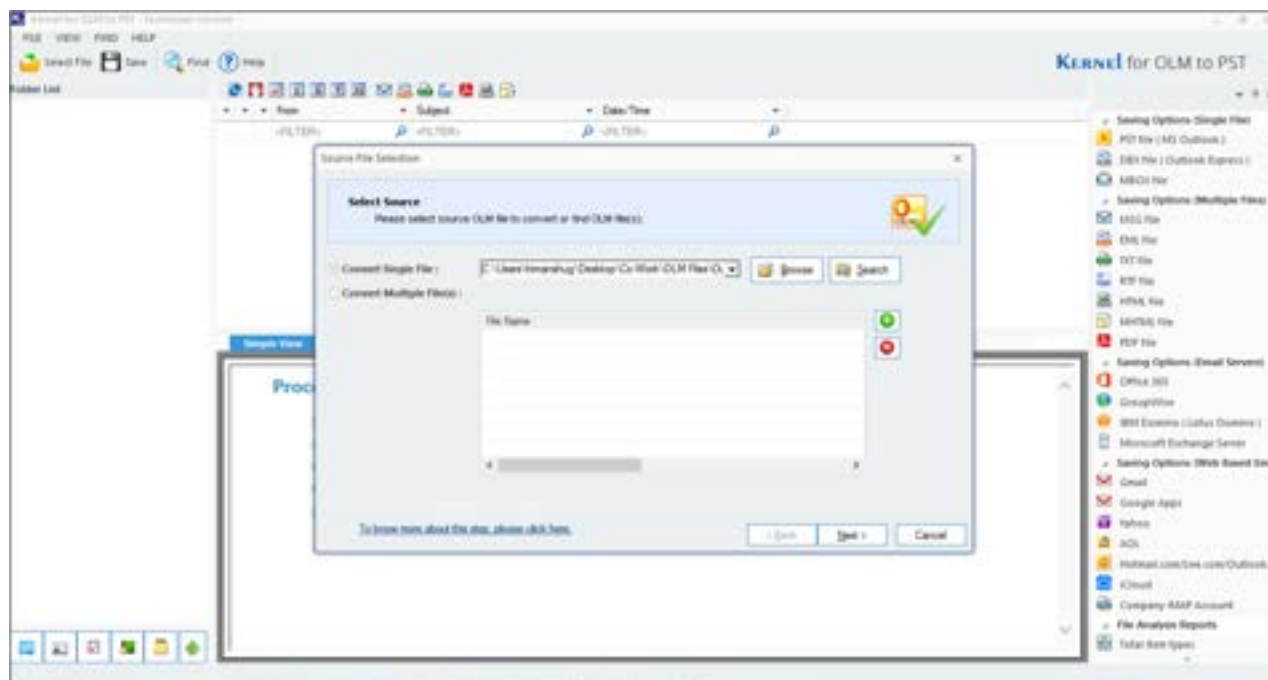


Figure 4.1: Main Window of the software after launching the product

The Source file selection' interface appears by default.

**Note:** You can also get the interface by clicking **Select** button from the Tool Bar. You can also select **Select File** option from the **File** Menu.

**Step 2:** Click the **Browse** button to select the location of OLM file. In case you don't know the exact location of the file, click **Search** button to search the OLM file. The 'Search OLM File(s)' dialog box appears.

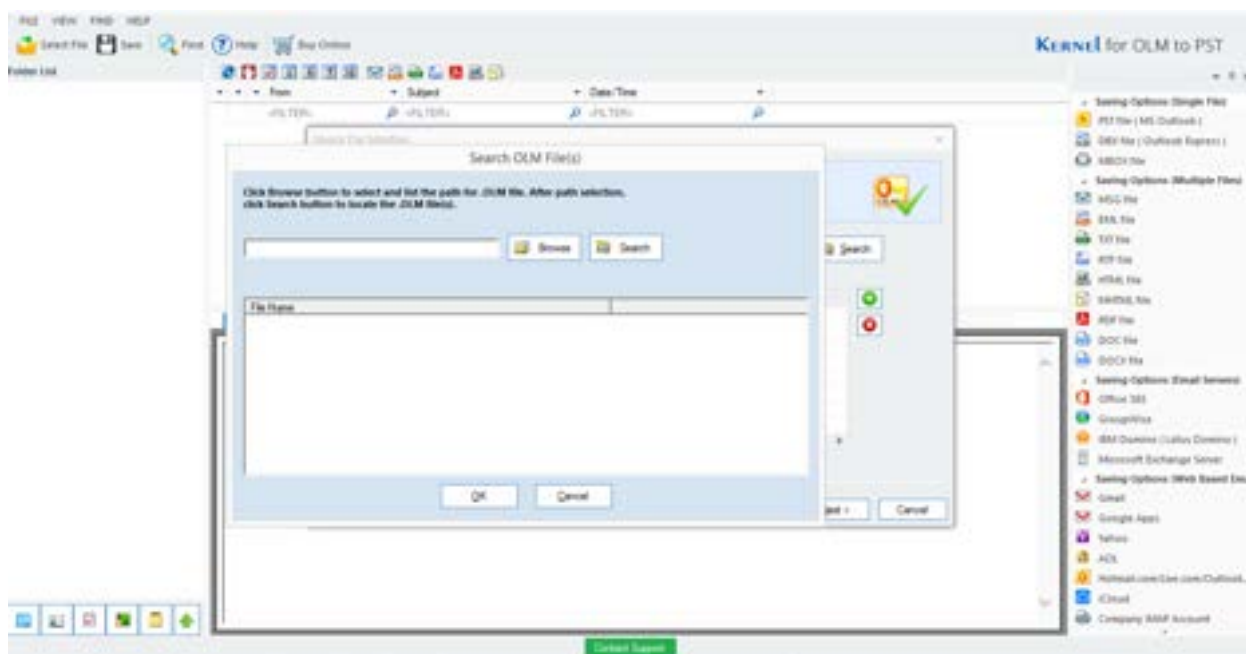


Figure 4.2: Search OLM File Interface

**Step 3:** Click the **Browse** button to select the folder where you want to search for the OLM file.

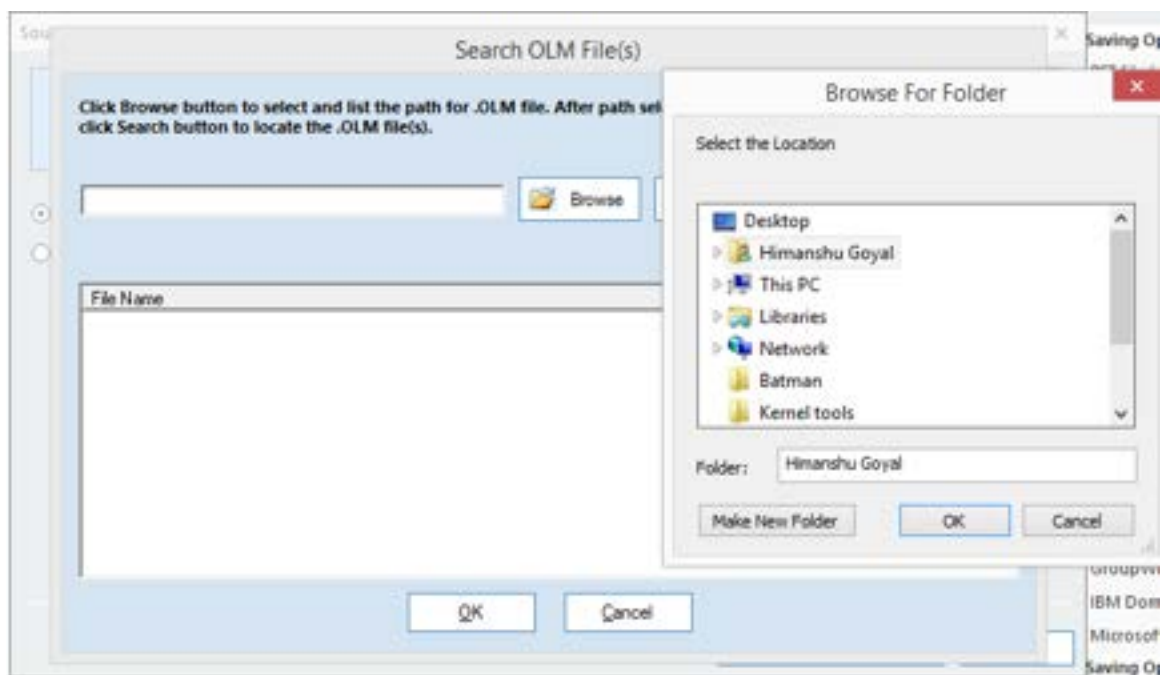


Figure 4.3: Searching for OLM file

**Step 4:** After selecting the required drive, click the **Search** button. The Software starts searching for OLM file. After searching, the software will enlist the OLM files found in the selected drive.

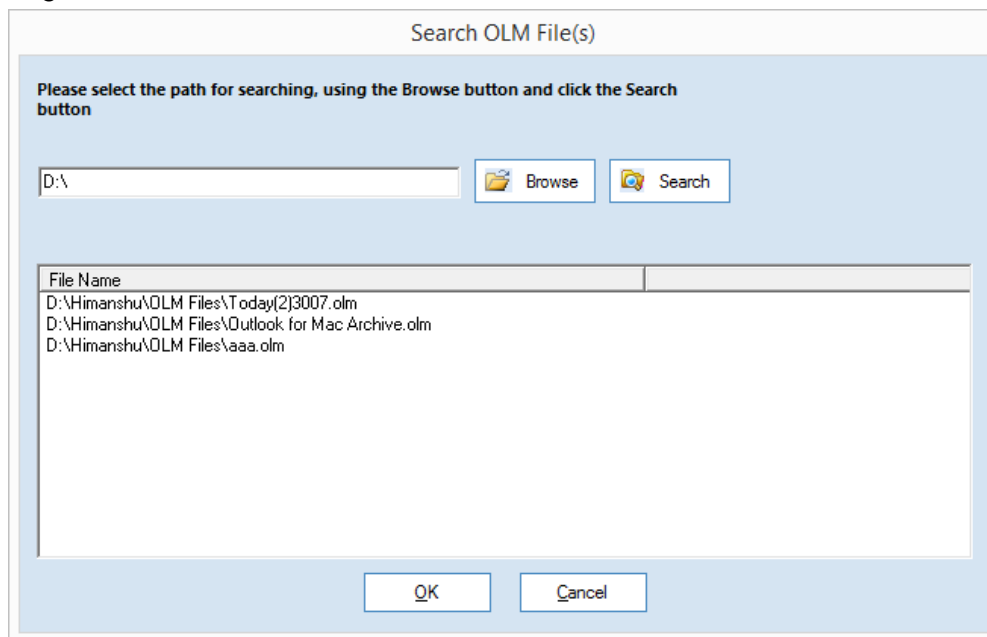


Figure 4.4: Enlisting the files found in the selected drive

**Step 5:** Select the required OLM file and click **OK** button. The selected OLM file gets selected in the 'Select Source OLM File' text area.

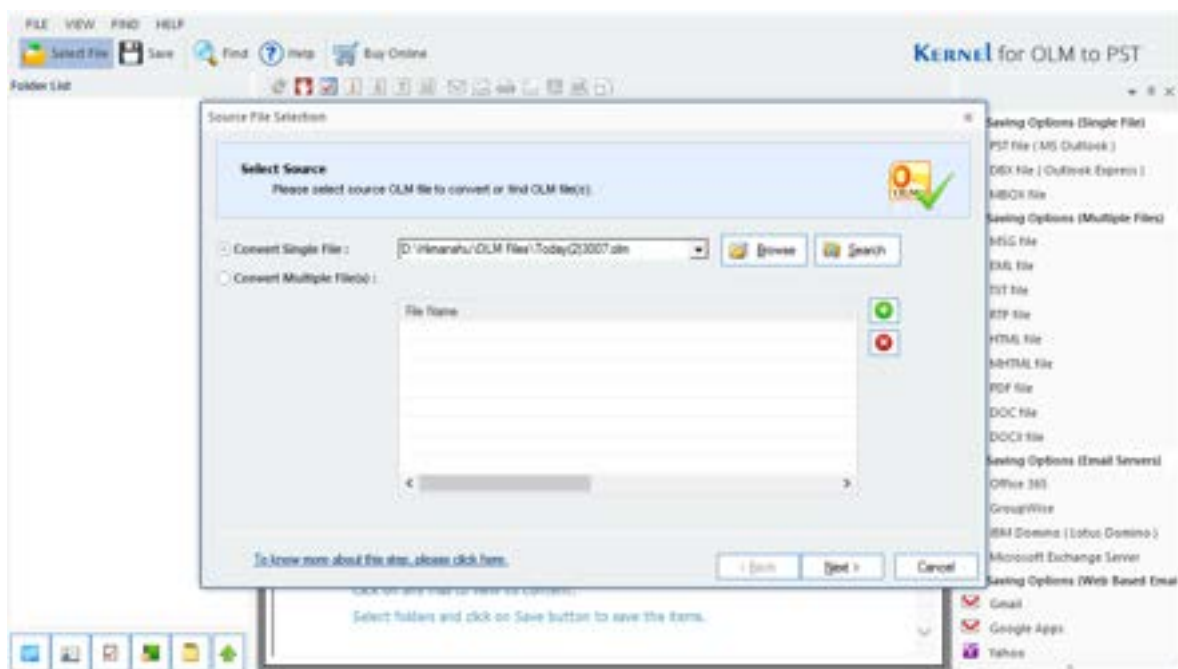


Figure 4.5: Figure depicting selected OLM file

**Step 6:** Click **Next** to proceed. A dialog box is displayed after successful completion of scanning and data retrieval from OLM file.

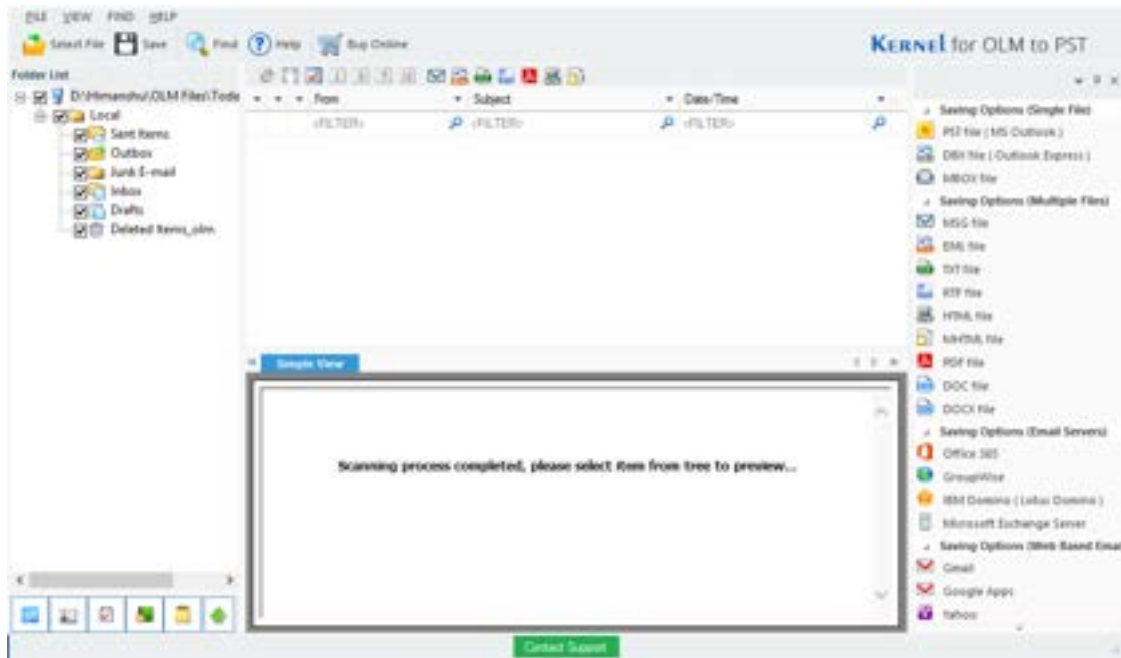


Figure 4.6: Displaying successful completion of scanning process

**Step 7:** All the folders are enlisted in a tree-like structure in the left pane.

**Step 8:** Select any folder from the left pane to view the items. The items are displayed in the right pane. You can select any item from the right pane and view its details which are displayed just below the items in the right pane.

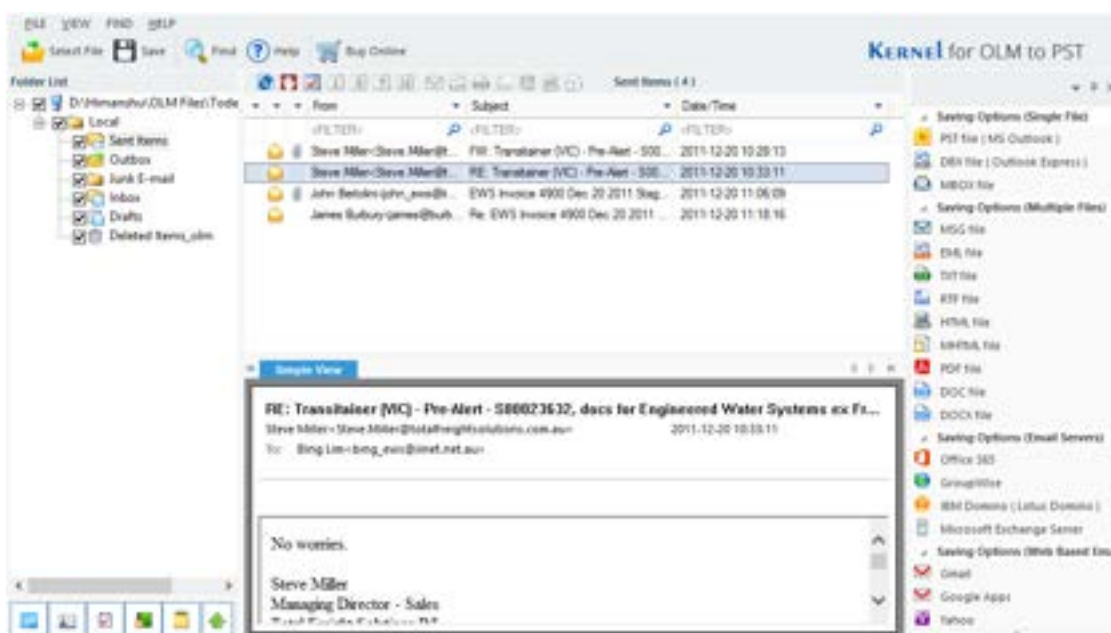


Figure 4.7: Displaying details of retrieved data

## 4.2 Searching OLM File

Using Kernel for OLM to PST you can easily search required items from recovered OLM file and save the found items in MSG or EML format to desired location. You need to execute the following steps to search items from OLM file:

**Step 1:** Click on the **Find** option on toolbar. **Find Message(s)** dialog box appears. Select the folders that you want to search from the left-pane.

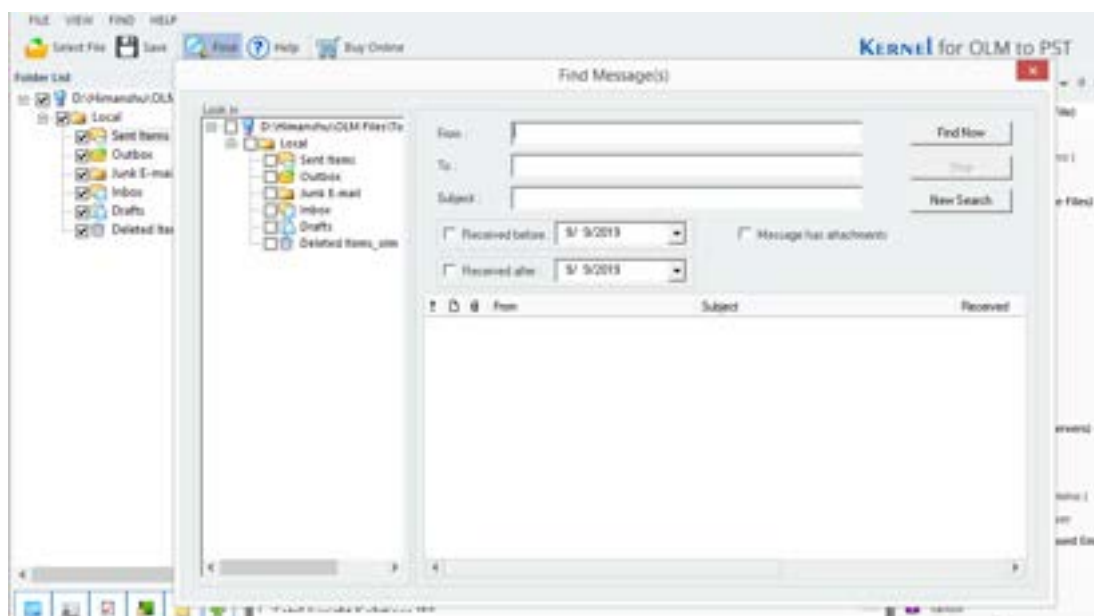


Figure 4.8: Searching for OLM Files

**Step 2:** Specify the Search criteria. You can specify following search criteria: From, To, Subject, Received before, Received after, Message has attachments or not.

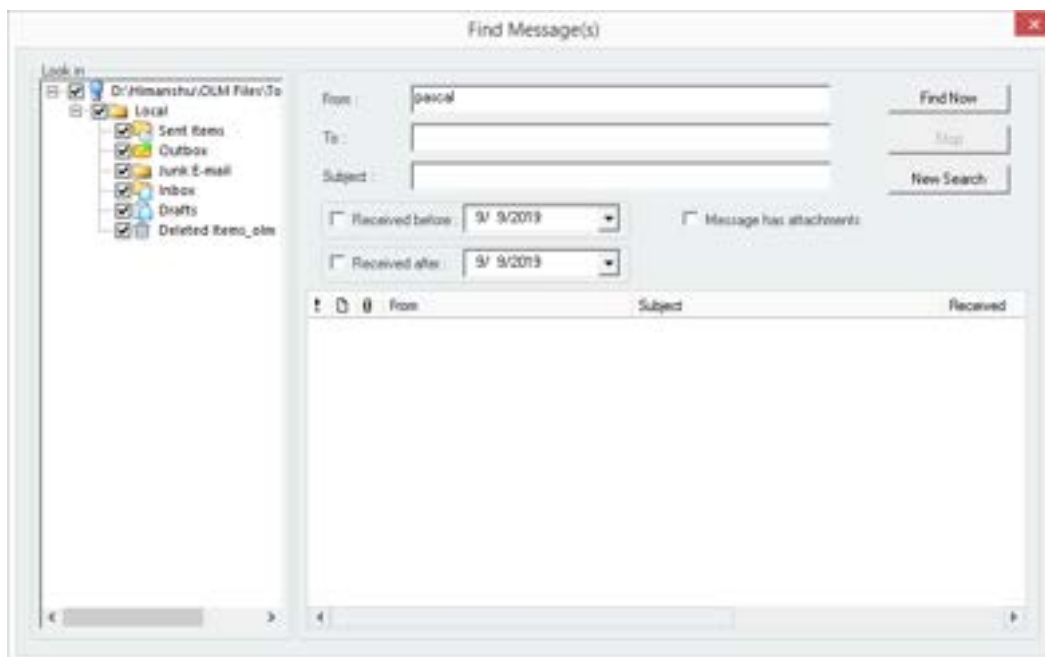


Figure 4.9: Specifying the Search Criteria

**Step 3:** Click on **Find Now** option to begin the search. As search progresses, all items matching specified criteria are displayed in the bottom pane. At any time, you can click on **Stop** button to terminate the search process.

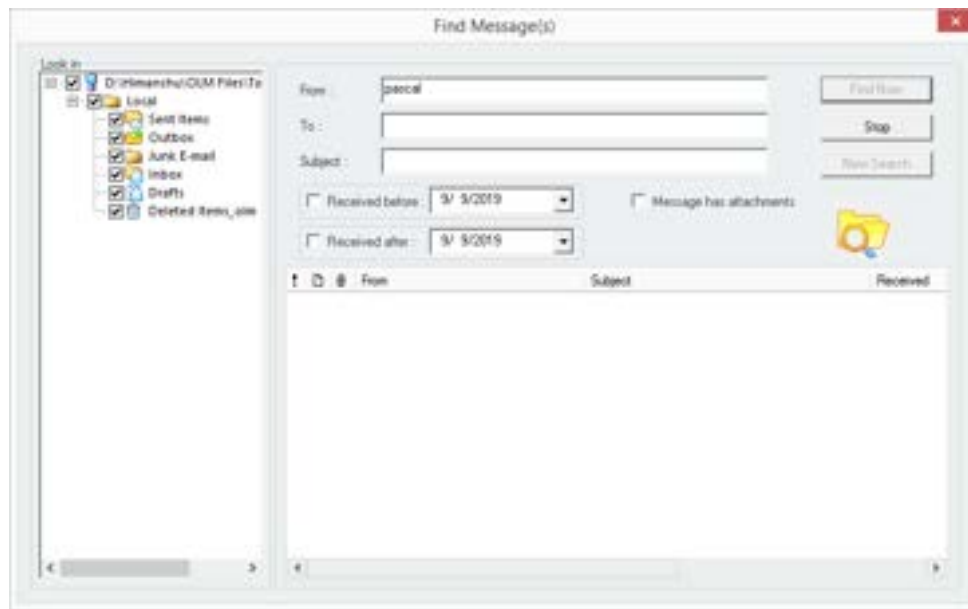


Figure 4.10: Searching in Progress

**Step 4:** After the Search process gets finished, a message is displayed showing total number of items found. Click on **OK** to complete the process.

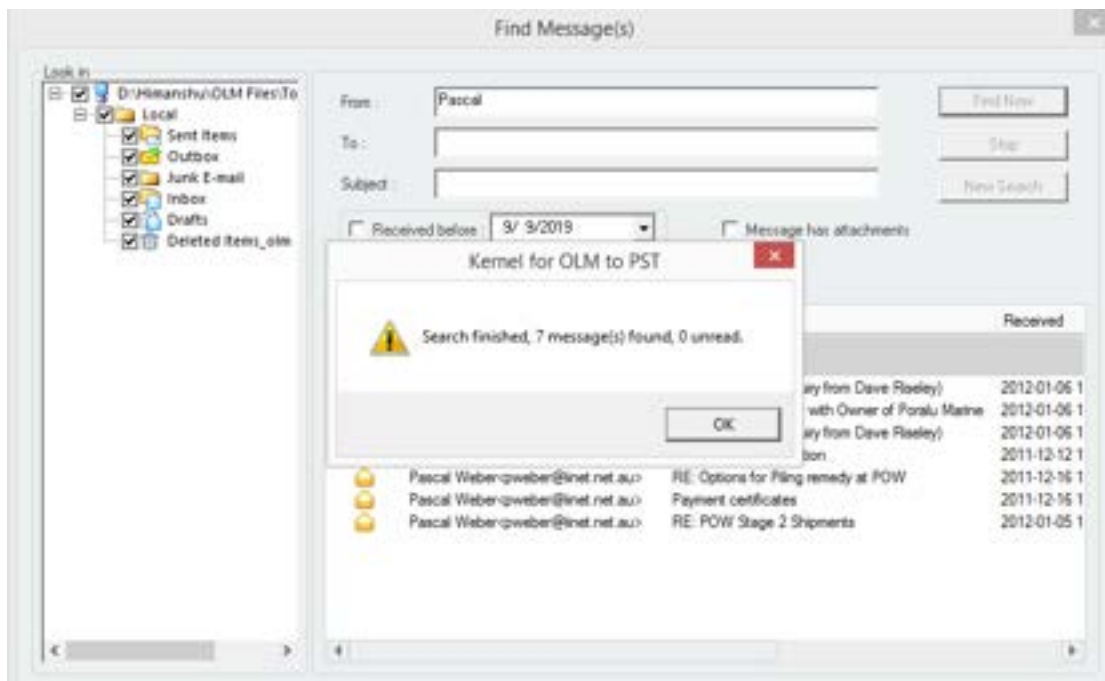


Figure 4.11: Displaying Searched Items

**Step 5:** To save the found messages, right-click on the required message and multiple saving options get displayed. Select any of these options as per your requirement.

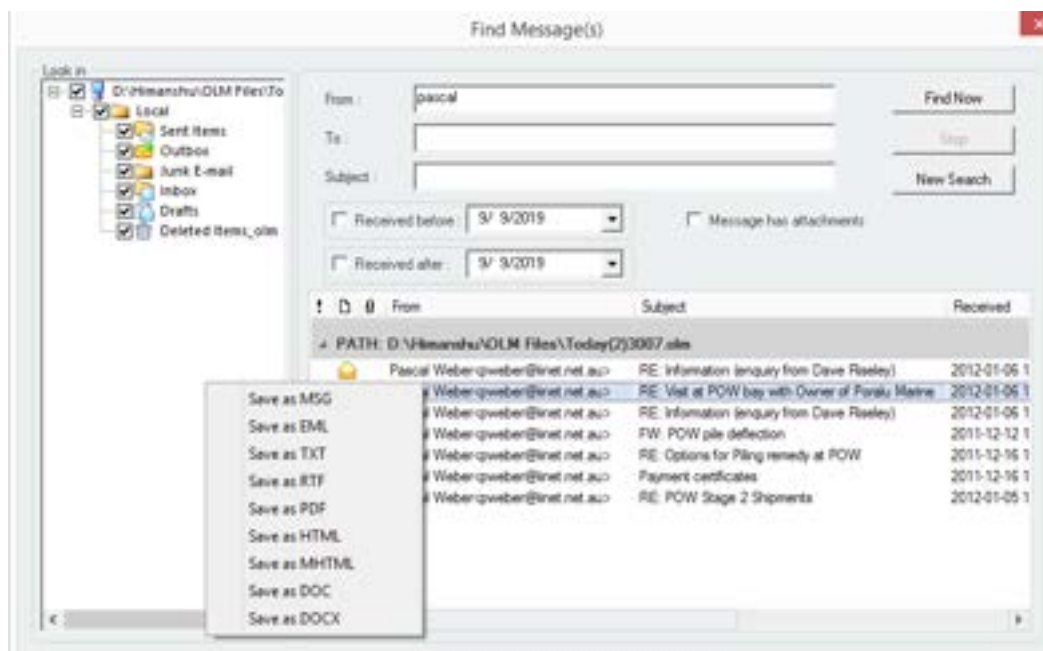


Figure 4.12: Saving Options for Searched Items

## 4.3 Saving Output File

After retrieval of OLM data, you can preview the retrieved folders displayed in the left pane. Once you view the folders and their item details, you have to save them at specific locations in the hard drive. You can save the recovered items in PST, MSG, EML, and other formats. Here, we have described three formats. After saving the items, they become accessible with MS Outlook and Outlook Express.

- Save as PST
- Save as MSG
- Save as EML

### 4.3.1 Save as PST

To save the recovered items in PST, follow the steps given below:

**Step 1:** Select the folders from the left pane that you want to save and click Save. The Select Output Type window will appear on the screen. Select the PST option and click Next.

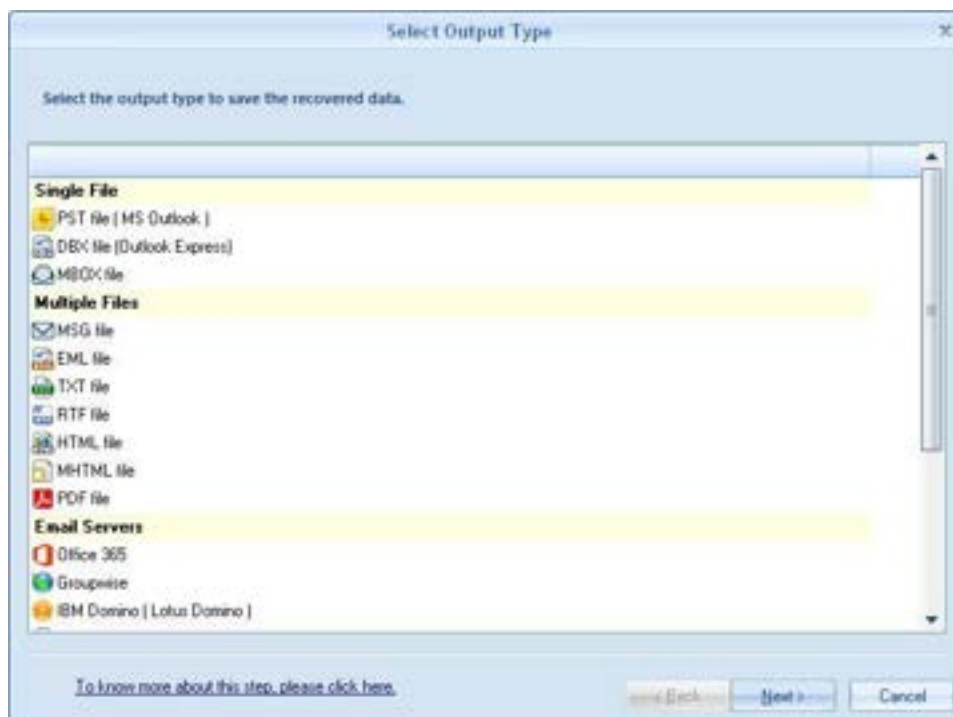


Figure 4.13: Selecting PST File option to convert the OLM file

**Step 2:** The filter section window will appear on the screen. Here, you can apply multiple filters to the OLM file based on the following criteria.

- **From** – To specify the sender name
- **To** – To specify the receiver name
- **Subject** – To specify a specific subject
- **Folder Name** – Select the specific folders from the file
- **Item Type** – Select the items of the file that you want to convert
- **Date Range** – To select a specific date range for converting the OLM file

After applying the specific filters, click Next

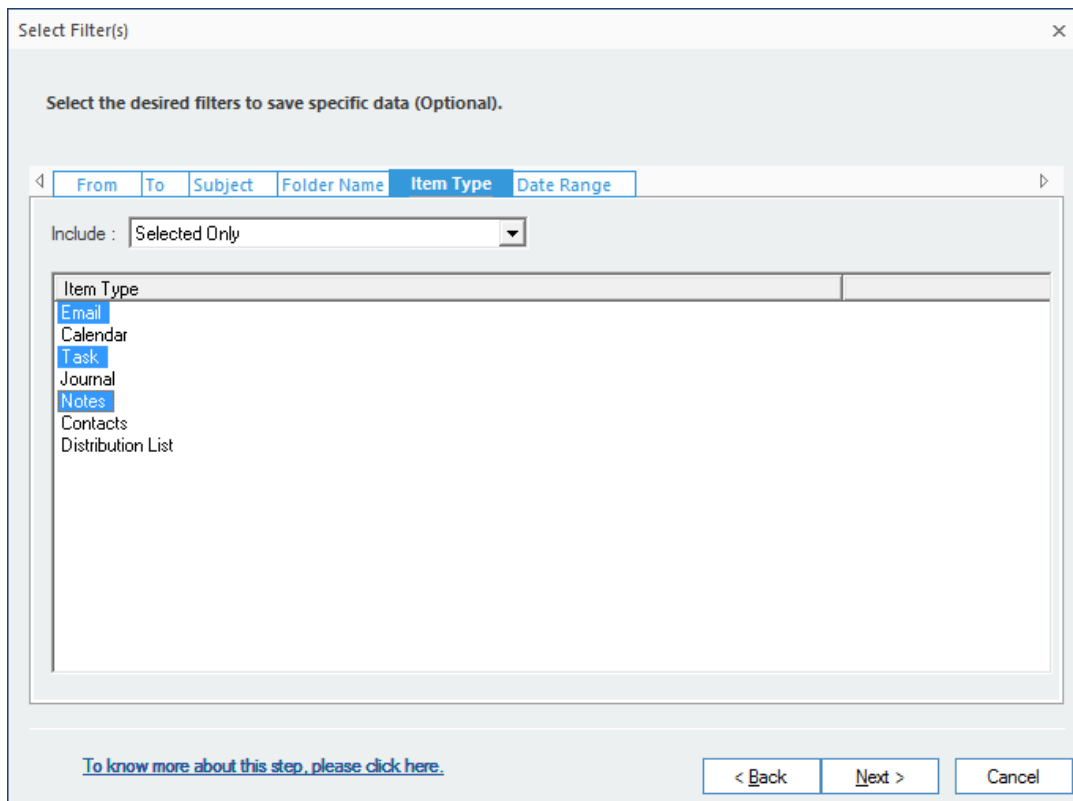


Figure 4.14: Applying filters to the OLM data

**Step 3:** The Manage Recovered Data window will appear on the screen. Here, you can split the PST file if you want to, or leave it as it is. Also, you can check '**Attach prefix to store name**' checkbox if you want to add prefix, and then click Next.

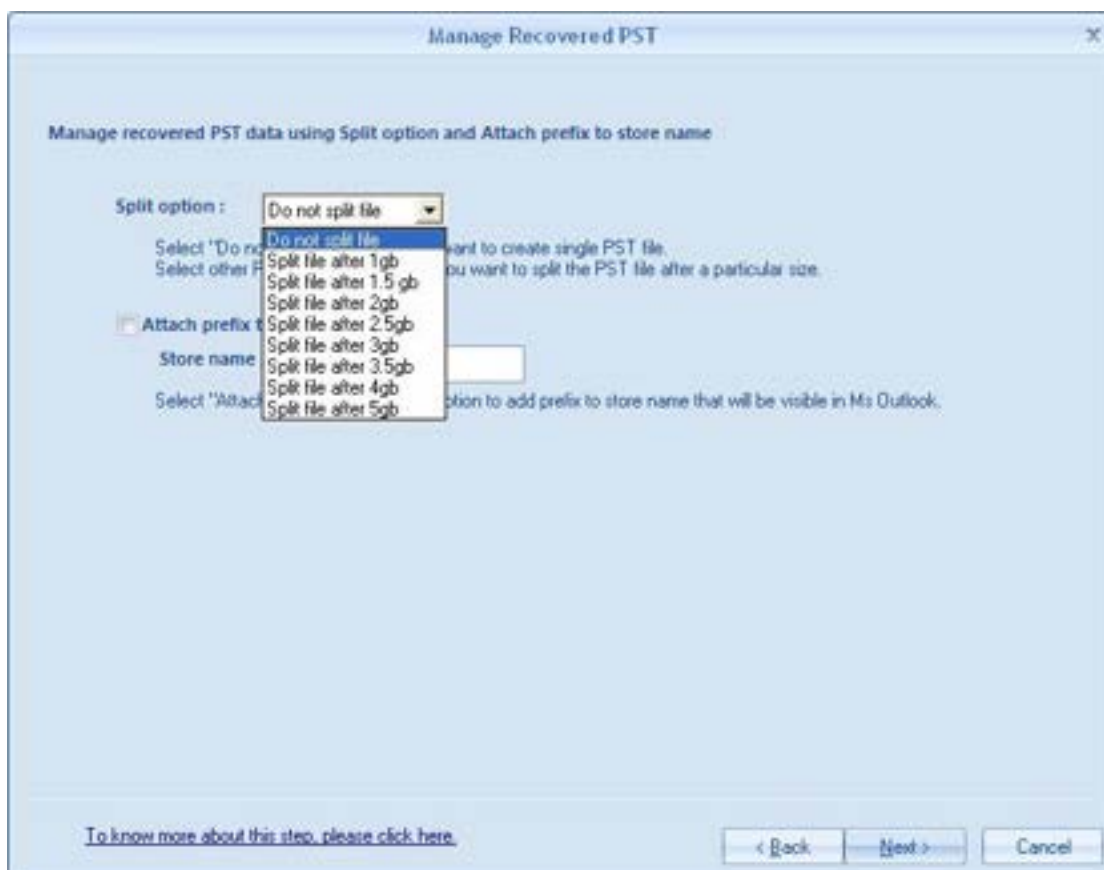


Figure 4.15: PST file Split options

**Step 4:** Click **Next** button to proceed. The '**Select Destination Path**' interface opens.

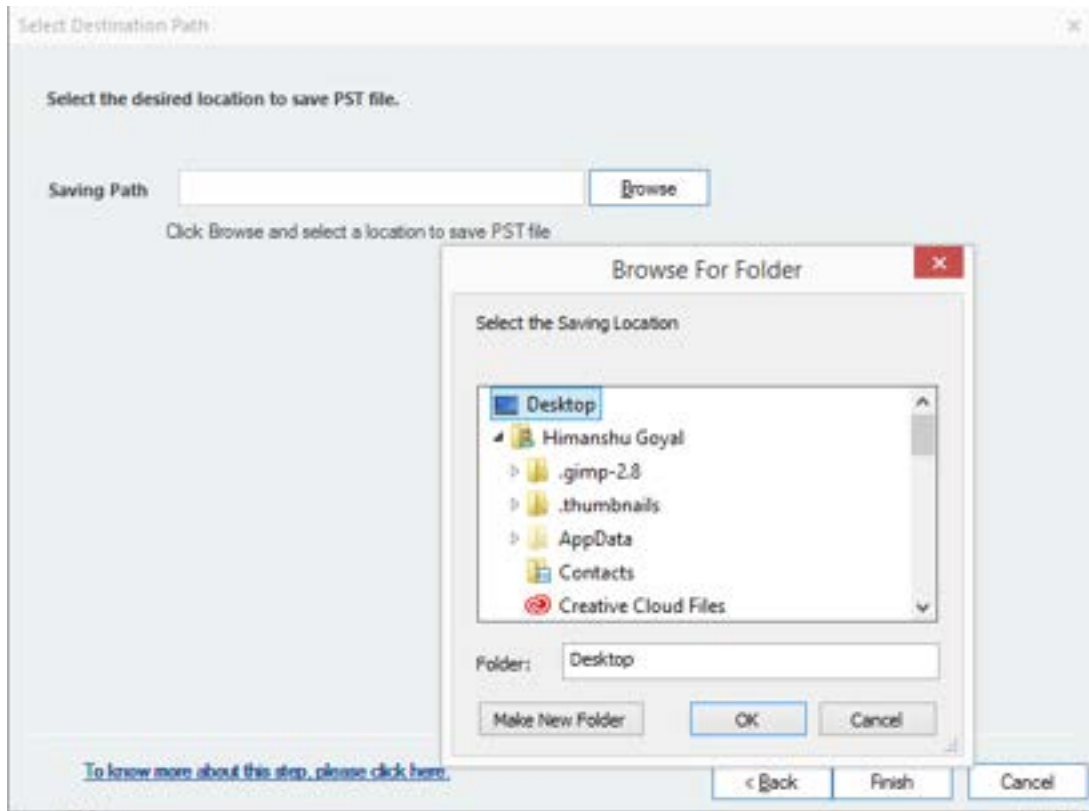


Figure 4.16: Selecting a destination path to save the PST file

**Step 5:** After specifying the exact location to save PST, check the checkbox 'Exclude deleted items while saving' and click Finish.

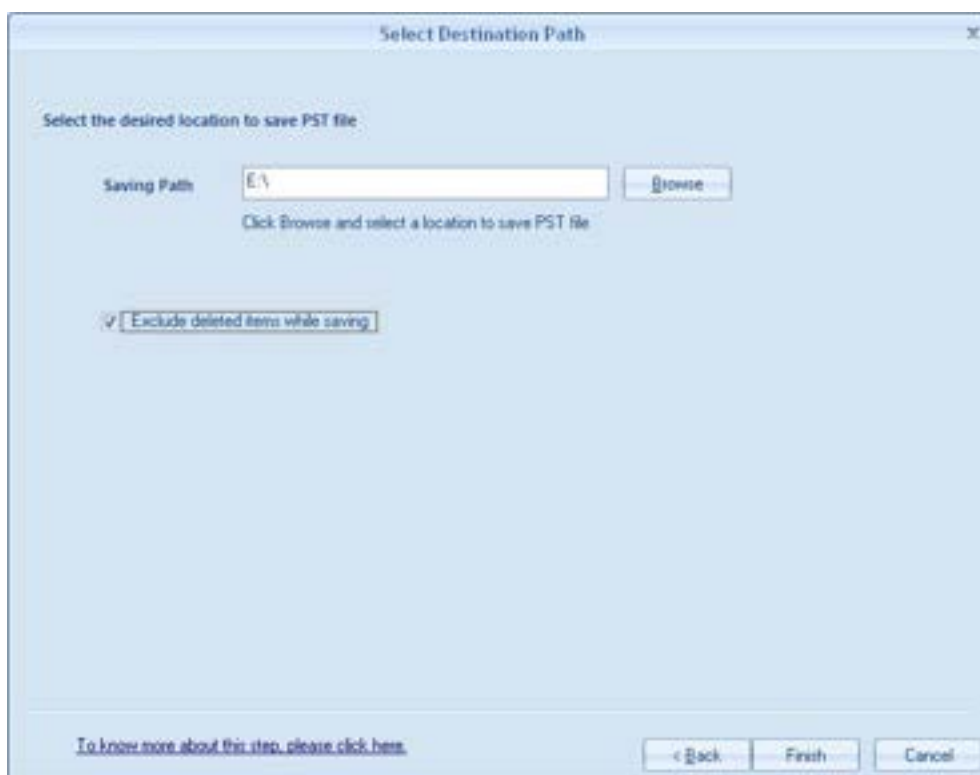


Figure 4.17: Specifying a location to save the PST file

**Step 6:** Once you click Finish, the tool will start converting OLM files to PST.

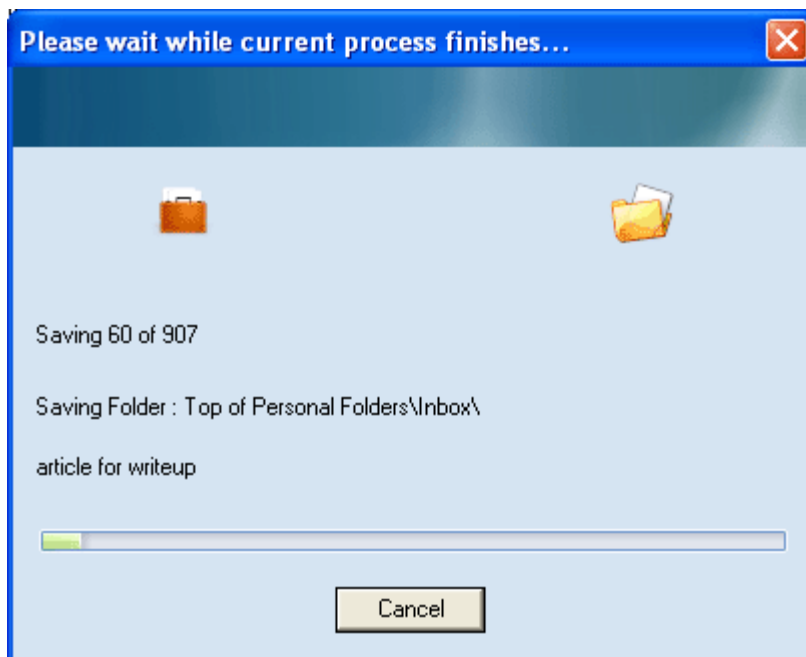


Figure 4.18: Saving the converted PST files to exact location

**Step 7:** Once the files are saved at exact location, a notification will appear on your screen with a confirmation message.

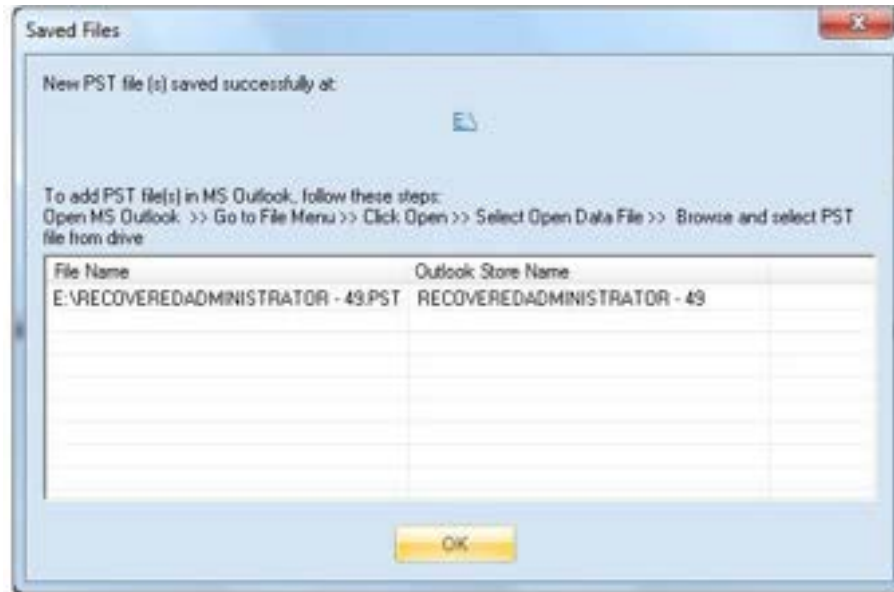


Figure 4.19: Notification displayed after saving the file

You can click the link of the destination folder to view its contents. Else, select the saved file and click **OK** to view its contents.

### 4.3.2 Save as MSG

Like PST, the retrieved data can be saved in MSG format also. You need to follow the following basic steps to save the data as MSG file:

**Step 1:** Select the folders from the left pane that you want to save and click Save. The Select Output Type window will appear on the screen. Select the MSG option and click Next.

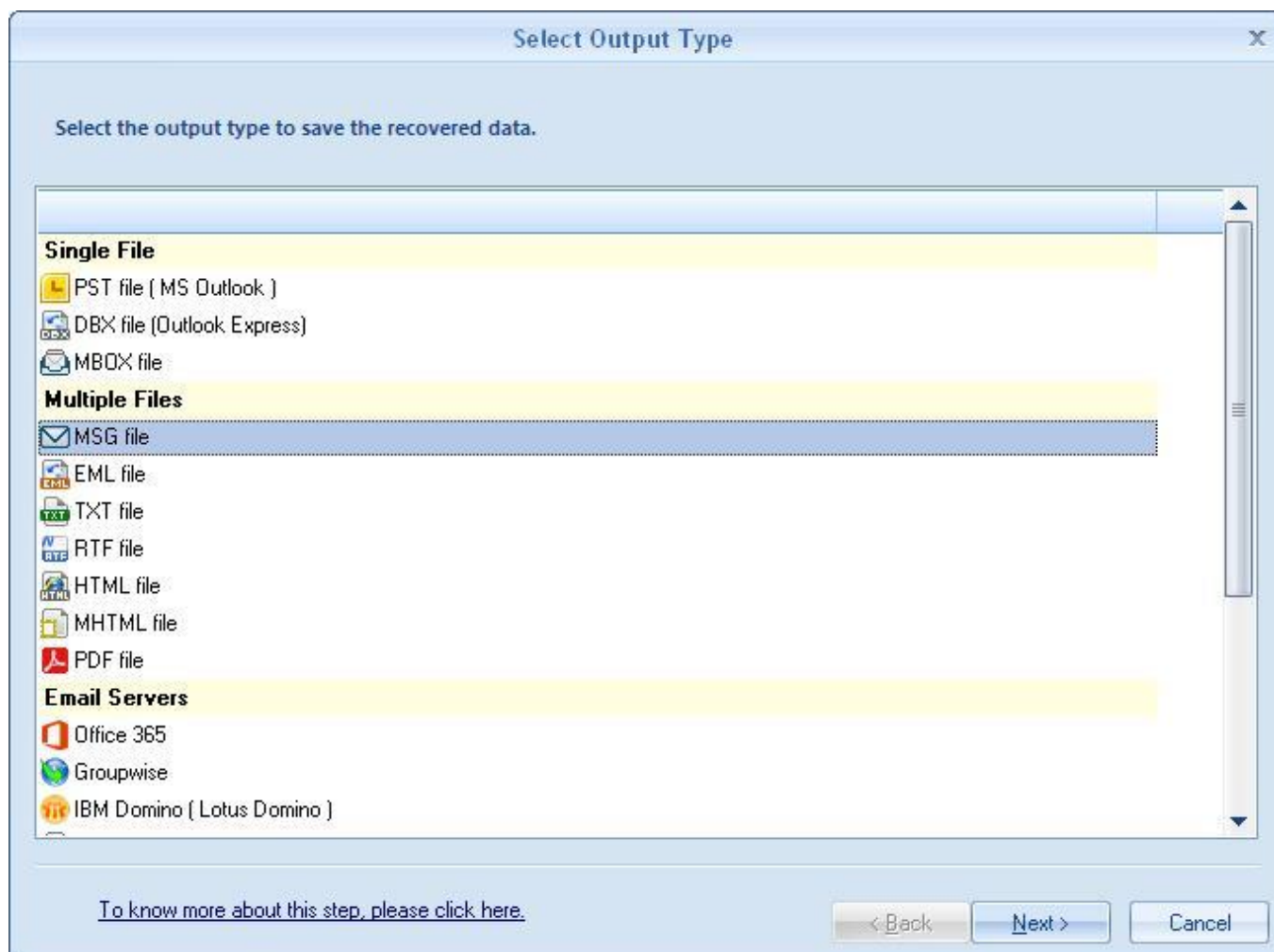


Figure 4.20: Selecting MSG option from the Output type

**Step 2:** The filter section window will appear on the screen. Here, you can apply multiple filters to the OLM file based on the following criteria.

- **From** – To specify the sender name
- **To** – To specify the receiver name
- **Subject** – To specify a specific subject
- **Folder Name** – Select the specific folders from the file
- **Item Type** – Select the items of the file that you want to convert
- **Date Range** – To select a specific date range for converting the OLM file

After applying the specific filters, click Next

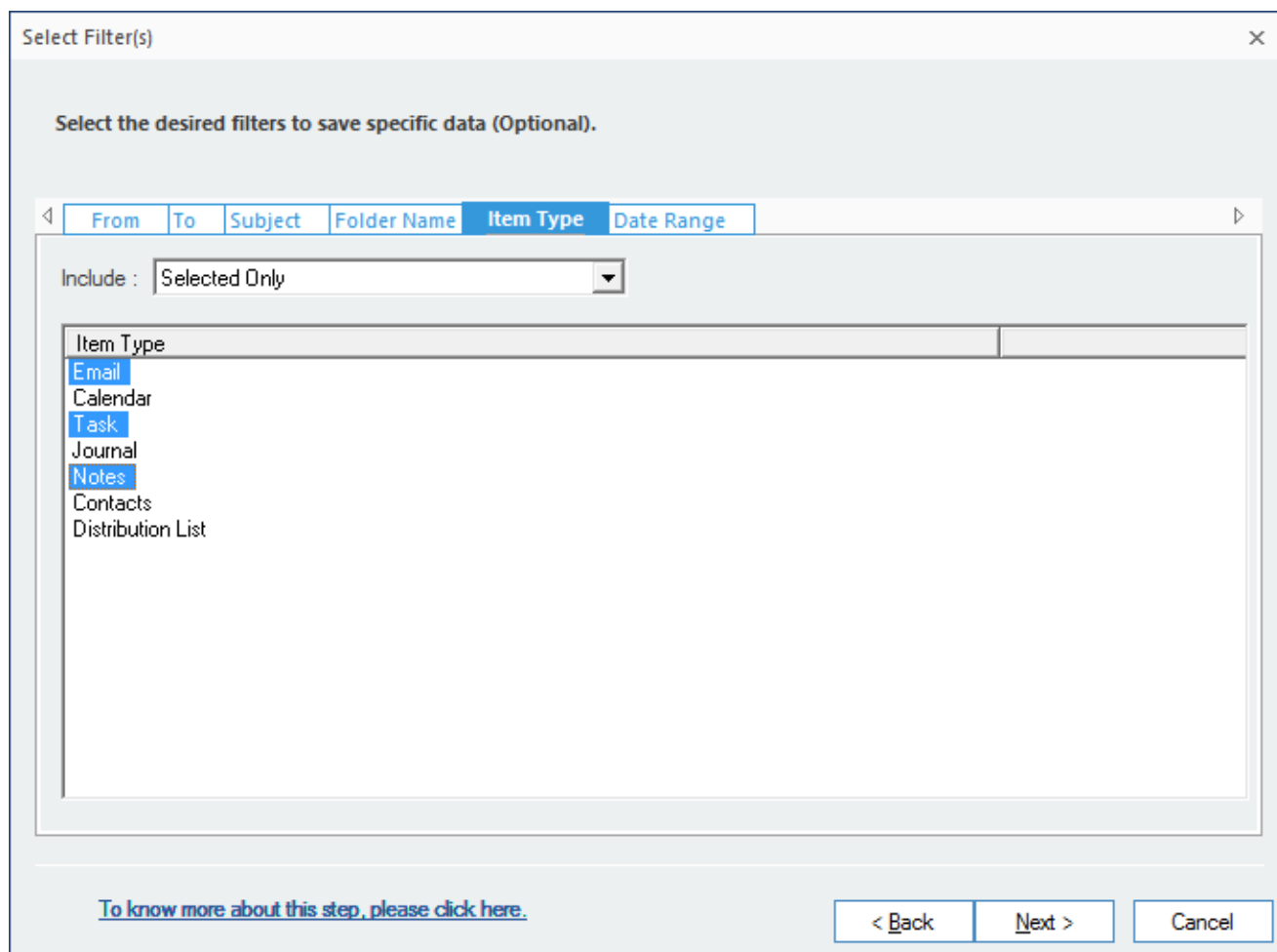


Figure 4.21: Applying specific filters to the OLM file

**Step 3:** A dialog box is displayed asking for selecting the saving path location to save MSG file. Click **Browse** button to provide the location for saving the file.

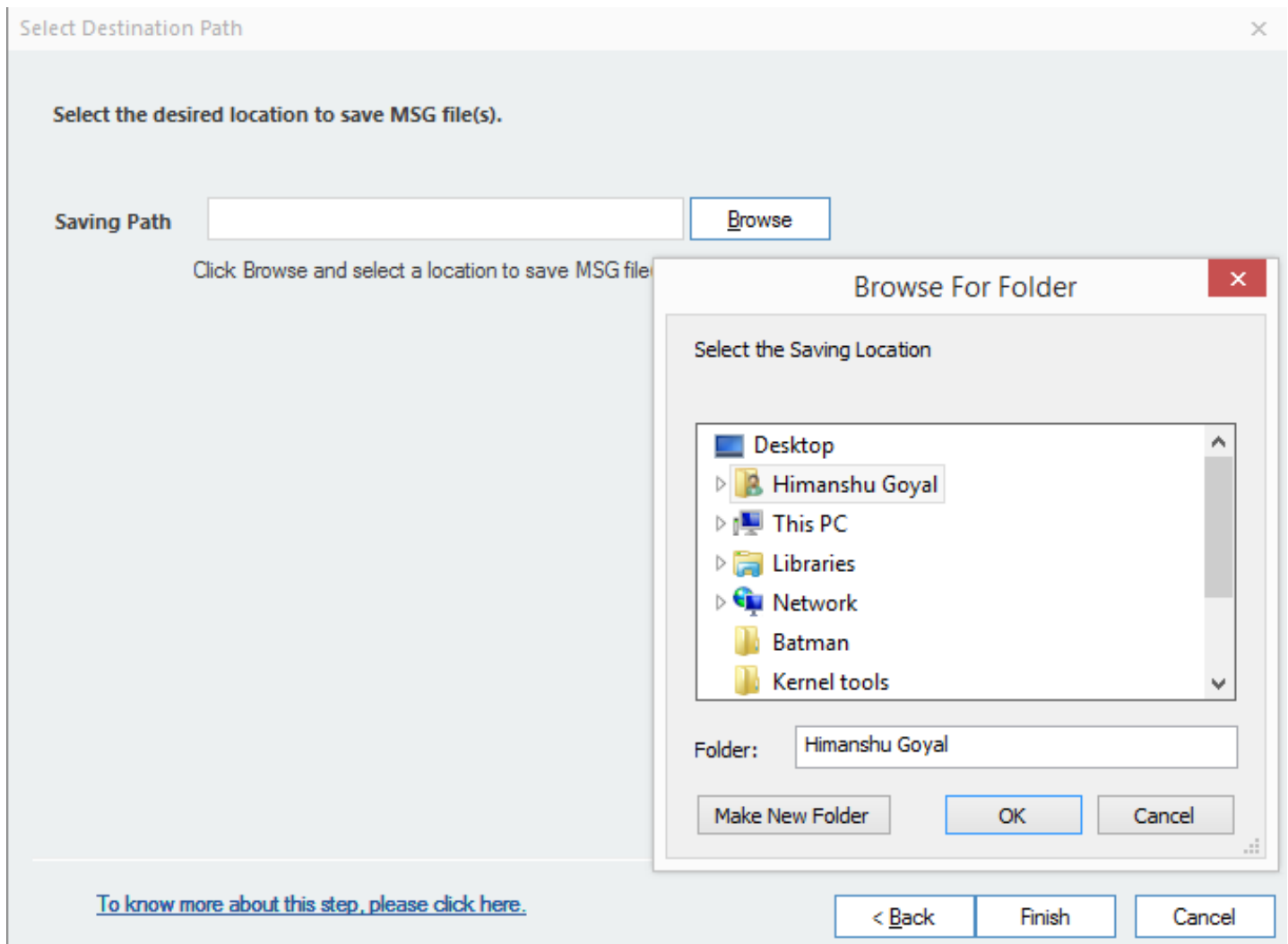


Figure 4.22: Selecting a destination path to save the MSG file

**Step 4:** After specifying the exact location to save MSG, check the checkbox 'Exclude deleted items while saving' and click Finish.

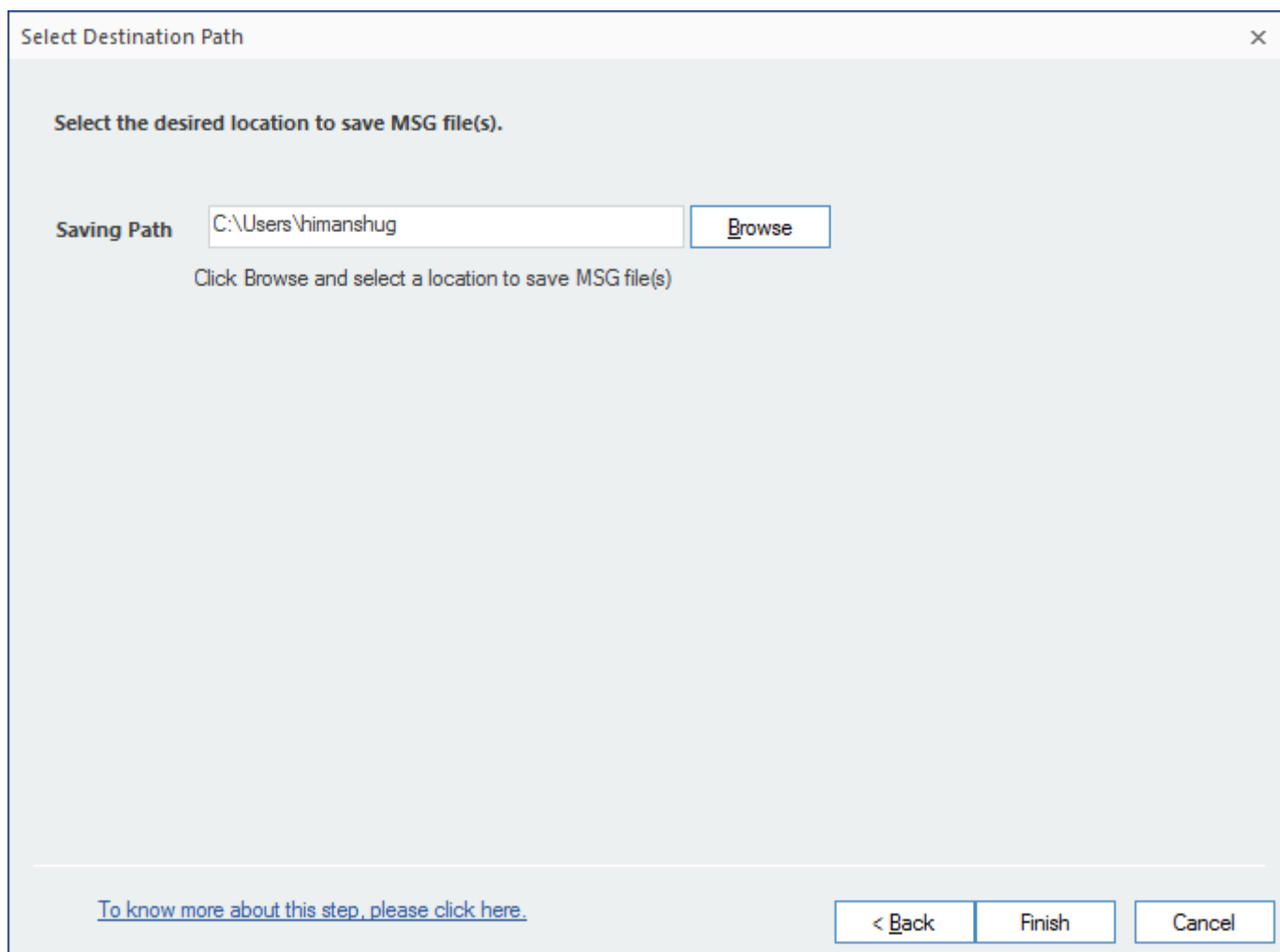


Figure 4.23: Specifying the location for saving the MSG file

**Step 5:** After clicking Finish, the tool will start converting OLM files to MSG.

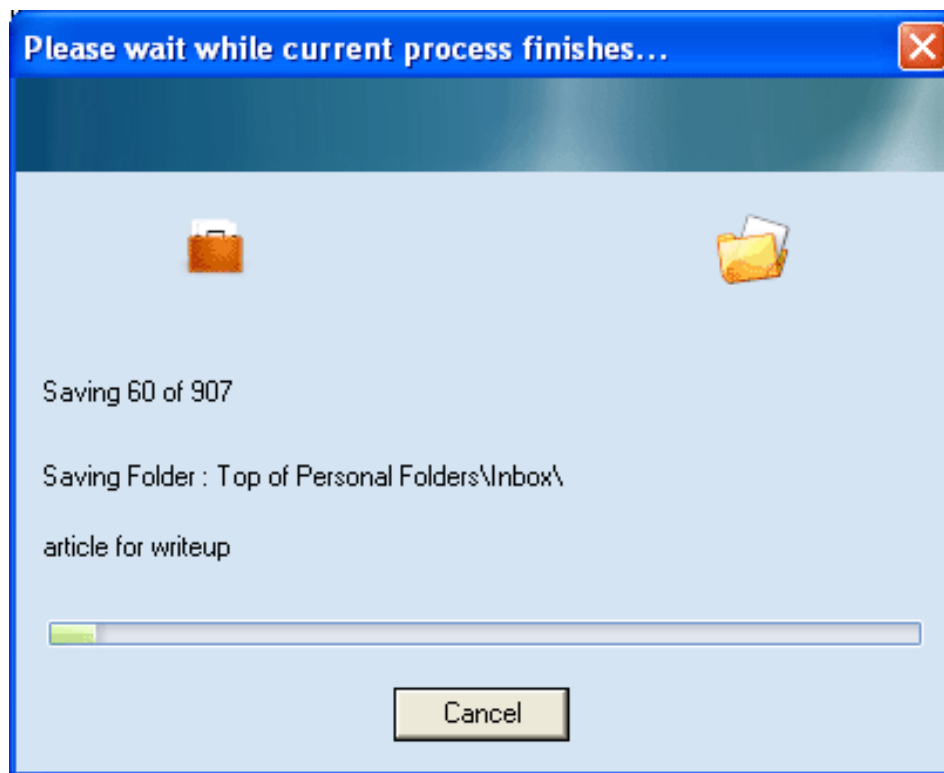


Figure 4.24: Software converting OLM data to MSG format

**Step 6:** Once the files are saved at exact location, a notification will appear on your screen with a confirmation message.

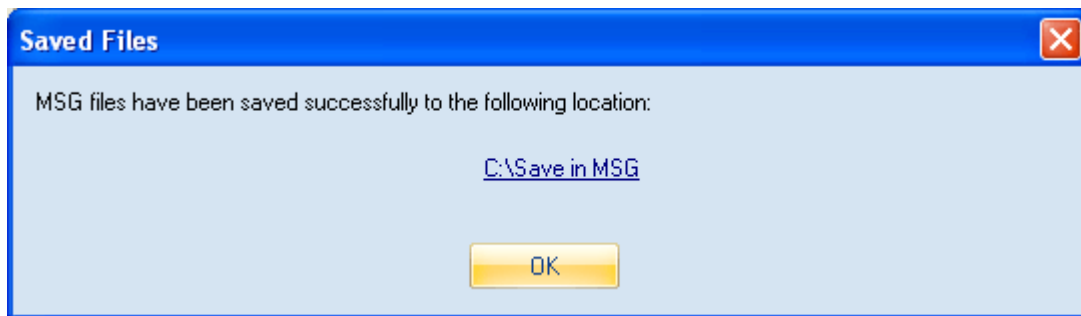


Figure 4.25: Showing the saved result at desired location

### 4.3.3 Save as EML

The recovered data can be saved in MSG format also. Follow the steps given below to save the items in EML format:

**Step 1:** Select the folders from the left pane that you want to save and click Save. The Select Output Type window will appear on the screen. Select the EML option and click Next.

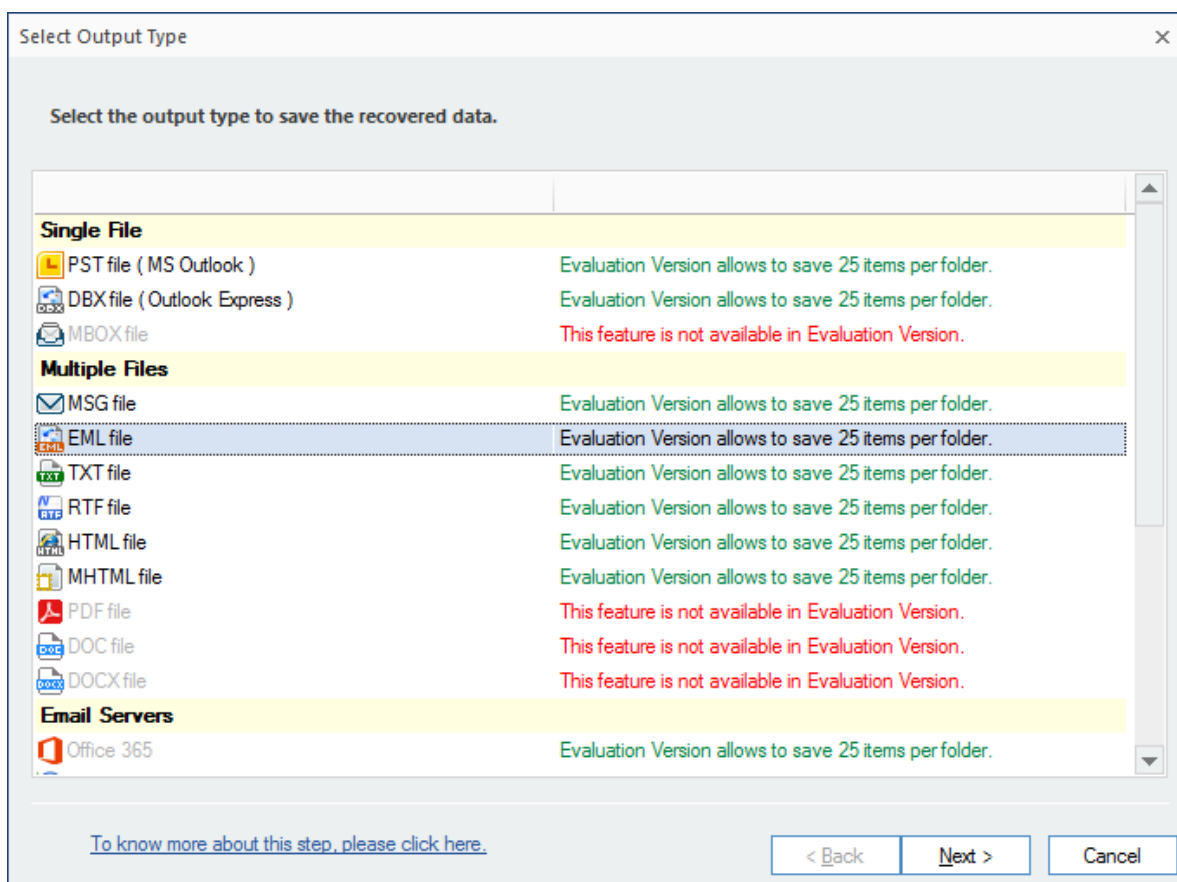


Figure 4.26: Selecting EML option from Output type

**Step 2:** The filter section window will appear on the screen. Here, you can apply multiple filters to the OLM file based on the following criteria.

- **From** – To specify the sender name
- **To** – To specify the receiver name
- **Subject** – To specify a specific subject
- **Folder Name** – Select the specific folders from the file
- **Item Type** – Select the items of the file that you want to convert
- **Date Range** – To select a specific date range for converting the OLM file

After applying the specific filters, click Next.

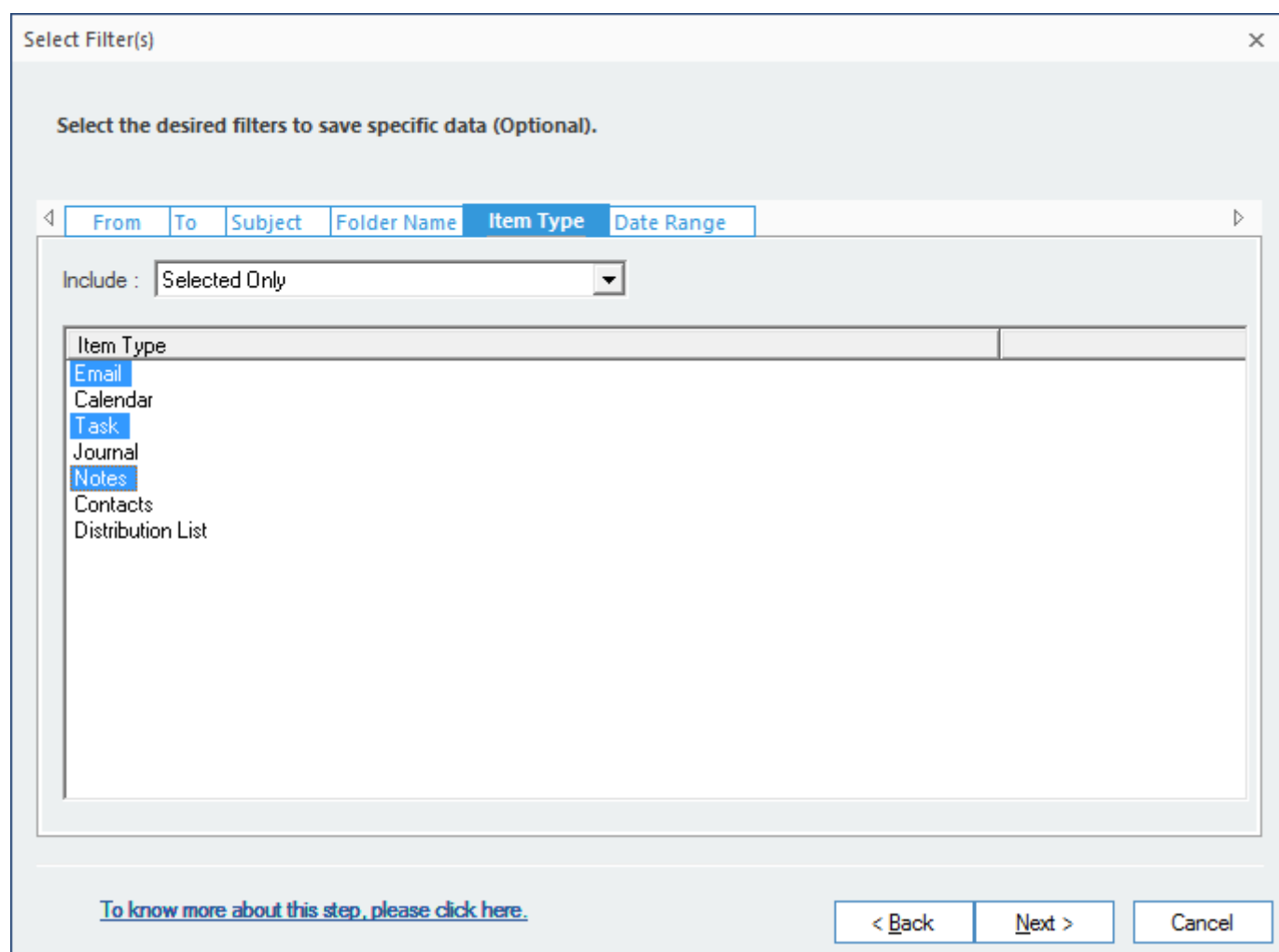


Figure 4.27: Applying specific filters to the OLM data

**Step 3:** A dialog box is displayed asking for selecting the saving path location to save EML file. Click **Browse** button to provide the location for saving the file.

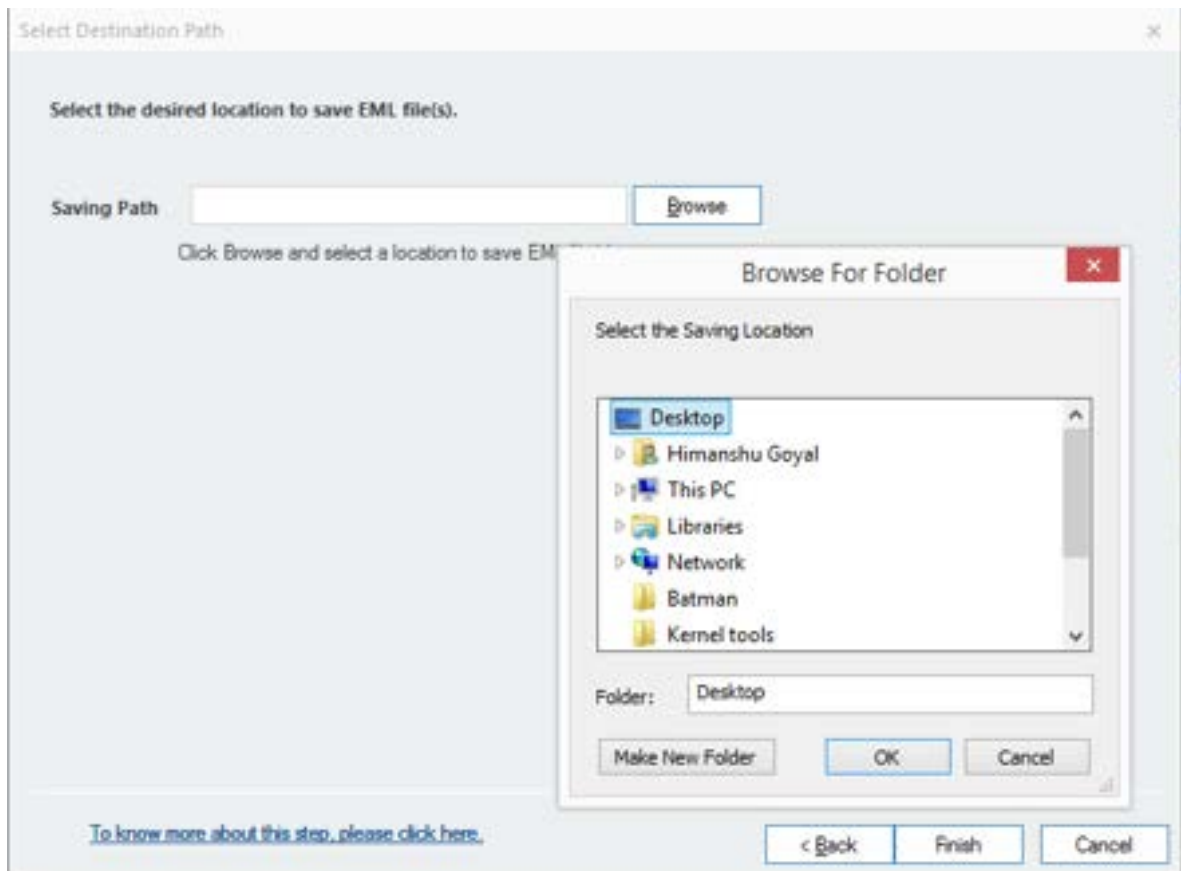


Figure 4.28: Specifying a Saving Path for the EML files

**Step 4:** After specifying the exact location to save EML, check the checkbox 'Exclude deleted items while saving' and click Finish.

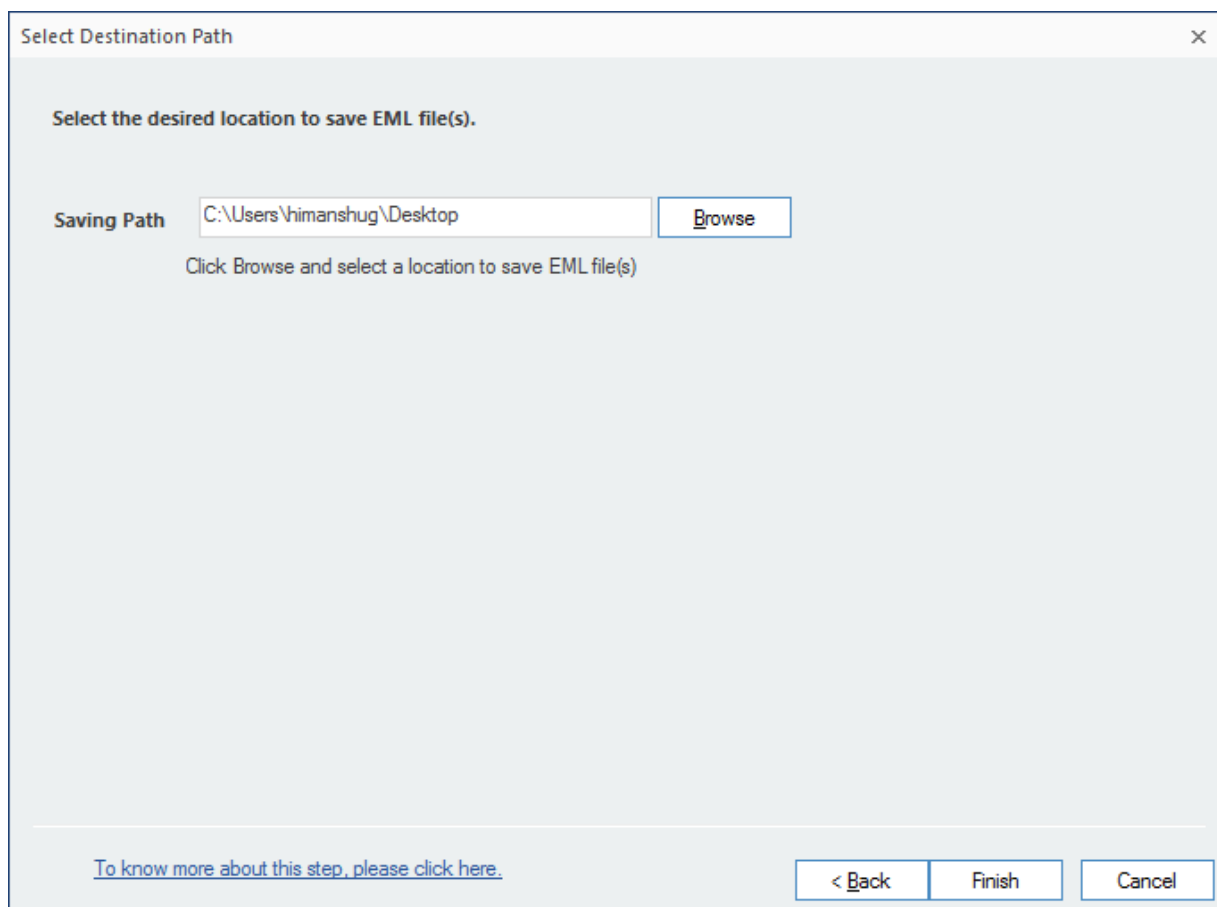


Figure 4.29: Finalizing a location to save EML file

**Step 5:** After clicking Finish, the tool will start converting OLM files to EML.

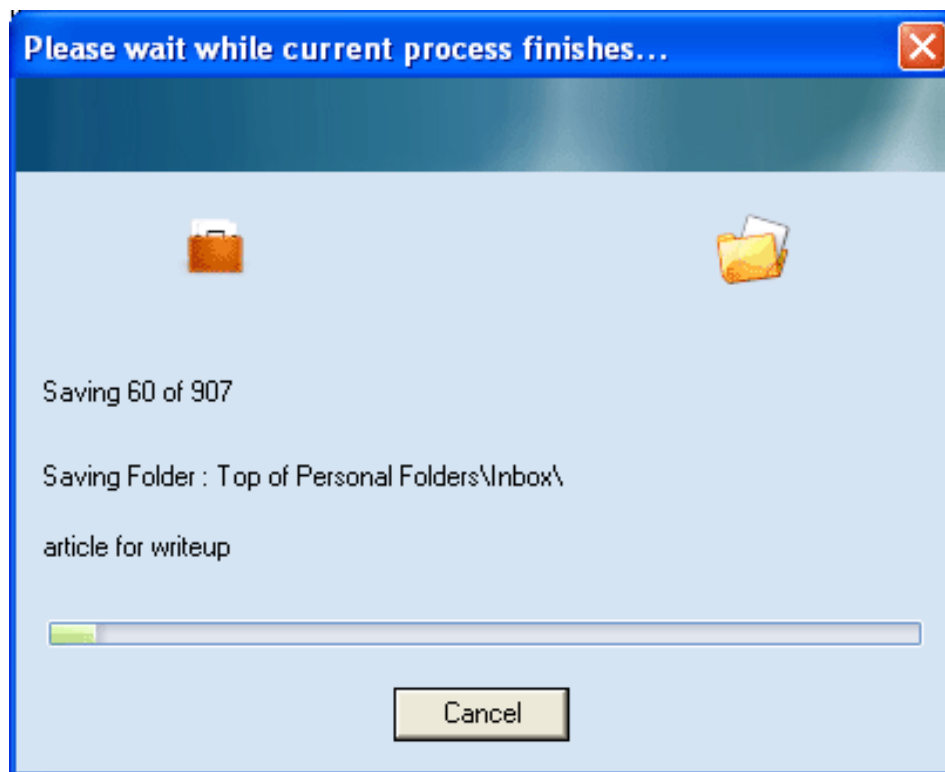


Figure 4.30: Software saving OLM file to EML format

**Step 6:** Once the files are saved at exact location, a notification will appear on your screen with a confirmation message

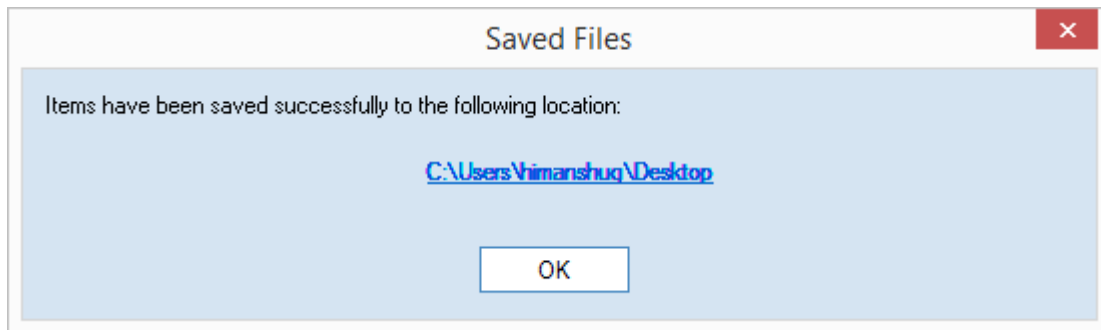


Figure 4.31: Displaying the location for saved EML files

## 5. Download, Purchase and Register

### 5.1 Free Trial Download

The trial version of Kernel for OLM to PST is also available for free of cost, using which a user can evaluate and analyze the capabilities of the software before making actual purchase. Free version of Kernel for OLM to PST works almost similar to that of the full version. Using the trial copy, user can retrieve entire data from OLM file and can preview the recovered items, but can save only 10 items from each folder into PST file. For saving the entire items, purchase the full version of the software.

Free version of Kernel for OLM to PST can be downloaded from our safe and

secure website: <https://www.nucleustechologies.com/download-olm-to-pst.html>

### 5.2 Purchase & Register

Purchase the Full version of Kernel for OLM to PST software for retrieving email items from OLM file and saving them in PST file format. The FREE trial version of Kernel for OLM to PST software allows you to preview the recovered items but limits from saving all the recovered items.

Purchase the Full version of Kernel for OLM to PST software through our encrypted and secure Website:

<https://www.nucleustechologies.com/buy-olm-to-pst-conversion.html>

#### Payment and Delivery

Purchase the Kernel for OLM to PST software from our authorized resellers, which provide number of payment options for your ease - PayPal, FAX, Credit Card, E-cheque, Pay Order, etc.

After making the purchase transaction with our resellers, an email is sent consisting of activation details and download link for the Full version of Kernel for OLM to PST comprising of the activation code. This email is sent to the email address, which you have used while processing the purchase transaction with our resellers. We suggest you not to use false email address while making the purchase transaction.

For any other details related to purchase process, software activation process, email us at:

[sales@nucleustechologies.com](mailto:sales@nucleustechologies.com)

### 5.3 Support

KernelApps Pvt. Ltd. provides round-the-clock technical support for its product range to solve technical and software queries. The software comes with an embedded user help manual that can be accessed by clicking **Help** in the software main window. You can also press the **F1** key on the keyboard of your computer to access the embedded user help manual of Kernel for OLM to PST.

We also have live support wherein you can chat with our software experts at:

<https://www.nucleustechologies.com/supportcenter/>

**Telephone Support:**

+91-9818725861

1-866-348-7872 (Toll Free for USA/CANADA)

**Email Support:**

[sales@nucleustechnologies.com](mailto:sales@nucleustechnologies.com) for Sales

[support@nucleustechnologies.com](mailto:support@nucleustechnologies.com) for Support

[contact@nucleustechnologies.com](mailto:contact@nucleustechnologies.com) for General Queries

## 6. Troubleshooting

### 6.1 Common Issues

#### **What is the limitation in trial version of Kernel for OLM to PST?**

The trial version of Kernel for OLM to PST works almost same as that of the full version of the software but has some limitation. Using the trial copy, user can retrieve entire data from OLM file and can preview the recovered email items, but can save only 10 items from each folder into PST file.

### 6.2 Frequently Asked Questions

#### **1. What are the major reasons for corruption of Outlook for Mac OLM files?**

Major reasons for corruption of Outlook for Mac OLM files include unintentional formatting of the HDD, error while Outlook installation, malware attack, hardware error, etc.

#### **2. How to purchase Kernel for OLM to PST?**

One can purchase Kernel for OLM to PST using our safe, secure and encrypted Website:

<https://www.nucleustechnologies.com/buy-olm-to-pst-conversion.html>

#### **3. What are the three saving modes in Kernel for OLM to PST?**

Kernel for OLM to PST offers three saving modes- Save as PST, Save as MSG and Save as EML.

#### **4. What are the supported Windows OS Platforms for Kernel for OLM to PST software?**

The supported Windows OS Platforms for Kernel for OLM to PST software are: Windows Server 2003, Windows Server 2008, Windows Server 2008R2, Windows Server 2012, Windows 8, Windows 7, Windows Vista, Windows XP, Windows 2003, Windows 2000, Windows 98, and Windows 95.

#### **5. What are the supported MS Outlook versions for Kernel for OLM to PST software?**

The supported MS Outlook versions for Kernel for OLM to PST are MS Outlook 97, 98, 2000, 2003, 2007, 2010, and 2013 (Both 32 bit and 64 bit).

#### **6. Give the basic steps for OLM to PST conversion process.**

The software performs the conversion process from OLM to PST in three simple steps - Takes the OLM file as input, Recovers data from the OLM file, and Restores them in PST file of Outlook.

#### **7. Give the link for downloading the free trial version of Kernel for OLM to PST software.**

The free trial version of Kernel for OLM to PST software can be downloaded using the link:

<https://www.nucleustechnologies.com/download-olm-to-pst.html>

## 7. Legal Notices

This section comprises the legal specification about Kernel for OLM to PST and the company KernelApps Private Limited.

### 7.1 Copyright Notice

KernelApps Private Limited, Kernel for OLM to PST, accompanied user manual, and documentation are copyright of KernelApps, with all rights reserved. Under the copyright laws, this user manual cannot be reproduced in any form without the prior written permission of KernelApps. No Patent Liability is assumed, however, with respect to the use of the information contained herein.

© **KernelApps PVT LTD. All rights reserved.**

### 7.2 Trademarks

Kernel for OLM to PST ® is a copyright work of KernelApps Private Limited.

Windows 7®, Windows Vista®, Windows XP®, Windows 2003®, Windows 2000®, Windows 98®, and Windows 95® are registered trademarks of Microsoft Corporation. All other brand and product names are trademarks or registered trademarks of their respective companies.

### 7.3 Disclaimer

The information contained in this user manual, including but not limited to any product specifications is subject to change without notice. KernelApps Private Limited provides no warranty with regard to this user manual or any other information contained herein and hereby expressly disclaims any implied warranties of merchantability or fitness for any particular purpose with regard to any of the foregoing. KernelApps Private Limited assumes no liability for any damages incurred directly or indirectly from any technical or typographical errors or omissions contained herein or for discrepancies between the product and the user manual.

In no event shall KernelApps Private Limited be liable for any incidental, consequential special, or exemplary damages, whether based on tort, contract or otherwise, arising out of or in connection with this user manual or any other information contained herein or the use thereof.

### 7.4 License Agreement

Kernel for OLM to PST © by KernelApps Private Limited.

#### Your Agreement to this License

u should carefully read the following terms and conditions before using, installing, or distributing this software, unless you have a different license agreement signed by KernelApps Private Limited. The terms and conditions of this License describe the permitted use and users of each Licensed Copy of Kernel for OLM to PST. For purposes of this License, if you have a valid license, you have the right to use a single Licensed Copy of KernelApps.

### **Scope of License**

Each Licensed Copy of Kernel for OLM to PST may either be used by a single person or used non-simultaneously by multiple people who use the software personally installed on a single workstation. All rights of any kind in the KernelApps, which are not expressly granted in this License, are entirely exclusively reserved to and by KernelApps. You may not rent, lease, modify, translate, reverse engineer, decompile, disassemble, or create derivative works based on, KernelApps, nor permit anyone else to do so. You may not make access to KernelApps available to others in connection with a service application service provider, or similar business, nor permit anyone else to do so.

### **Warranty Disclaimers and Liability Limitations**

Kernel for OLM to PST, and any and all accompanying software, files, data and materials, are distributed and provided as is and with no warranties of any kind, whether expressed or implied. In particular, there is no warranty for the quality of data recovered. You acknowledge that good data processing procedure dictates that any program, including Kernel for OLM to PST, must be thoroughly tested with non-critical data before there is any reliance on it, and you hereby assume the entire risk of all use of the copies of Kernel for OLM to PST covered by this License. This disclaimer of warranty constitutes an essential part of this License. In addition, in no event does KernelApps authorize you or anyone else to use Kernel for OLM to PST in applications or systems where Kernel for OLM to PST Failure to perform can reasonably be expected to result in a significant physical injury, or in loss of life. Any such use is entirely at your own risk, and you agree to hold KernelApps harmless from any and all claims or losses relating to such unauthorized use.

### **General**

This License is the complete statement of the agreement between the parties on the subject matter, and merges and supersedes all other or prior understandings, purchase orders, agreements, and arrangements. This License shall be governed by the laws of the State of Delhi. Exclusive jurisdiction and venue for all matters relating to this License shall be in courts and for a located in the State of Delhi, and you consent to such jurisdiction and venue. There are no third-party beneficiaries of any promises, obligations, or representations made by KernelApps herein. Any waiver by KernelApps of any violation of this License by you shall not constitute, nor contribute to, a waiver by KernelApps of any other or future violation of the same provision, or any other provision, of this License.