



Kernel for Paradox

“Effective Tool for Scanning and Repairing
Corrupt or Damaged .DB Paradox Database Files”

PRODUCT GUIDE

Table of Contents

1.	Introduction to Kernel for Paradox	4
1.1	Using this Manual	4
1.2	About Kernel for Paradox	5
1.3	Salient Features	5
1.4	Who Should Use this Software?	5
2.	Getting Started	6
2.1	Installation Pre-requisites.....	6
2.2	Downloading Kernel for Paradox for the First Time	7
2.3	Install Kernel for Paradox	7
2.4	Start Kernel for Paradox	7
2.5	Uninstall Kernel for Paradox	7
3.	Software Interface	9
3.1	Menu-bar.....	9
3.2	Tool-bar.....	10
3.3	Status Bar	11
3.4	Buttons Used.....	12
4.	Repairing Paradox .DB Files	13
5.	Full Version	17
5.1	Requirement of Full Version.....	17
5.2	Purchasing Full Version.....	17
6.	Support.....	18
7.	Troubleshooting	19
7.1	Common Issues	19
7.2	Frequently Asked Questions	19
8.	Legal Notices	20
8.1	Copyright	20
8.2	Trademark	20
8.3	Disclaimer	20
8.4	License Agreement	20

Table of Figures

Figure 3.1: File Menu 9

Figure 3.2: Tools Menu..... 10

Figure 3.3: Help Menu 10

Figure 3.4: Status Bar 11

Figure 4.1: Main Window 13

Figure 4.2: Added DB Files 14

Figure 4.3: Details of Files..... 15

Figure 4.4: Preview 16

1. Introduction to Kernel for Paradox

Welcome to the user manual for Kernel for Paradox, the most effective and convenient paradox database recovery software available that recovers data from corrupted .DB paradox database files. This user manual comprises step by step guidelines on using Kernel for Paradox.

1.1 Using this Manual

This user manual is intended to guide users on using Kernel for Paradox. We suggest that first time users should read this user manual completely and carefully before proceeding to use the software. However, if you are an experienced user, you can use the table of contents to find out information pertaining to the tasks that you need to perform by using Kernel for Paradox.

You can use the table of contents to navigate through different sections of this user manual. The table of contents lists all the sections that are contained in this user manual in chronological order. The user manual comprises the following sections:

- Introduction
- Getting Started
- Software Interface
- Repairing Paradox .DB Files
- Full Version
- Support
- Troubleshooting
- Legal Notices

Certain abbreviations have been used throughout this manual. For clear understanding of the contents of this user manual, please go through the list of abbreviations, mentioned below, before reading the manual.

1.1.1 List of Abbreviations

DB: Database

MS: Microsoft

RAM: Random Access Memory

MB: Mega-Byte

GB: Giga-Byte

1.2 About Kernel for Paradox

Kernel for Paradox is database repair software for Paradox database files (.DB). This software repairs corrupt Paradox database files, damaged due to:

- Deleted or damaged primary keys or foreign keys
- Corrupt or deleted indexes
- Lost or deleted predefined defaults, default values
- Deleted or damaged tables or table data
- Locked .db database file preventing access
- Corrupt or damaged multi-volume database files
- Damaged or corrupt unique key, indexes

Kernel for Paradox uses quick algorithm for searching and repairing those corrupted database files.

1.3 Salient Features

Salient features of Kernel for Paradox include:

- Efficient and embedded with repair algorithms to repair corrupt Paradox databases (.db)
- Recovers tables and .db paradox table data
- User friendly interface, no technical skills required
- Free demo to experience the features and working of the tool before purchasing it

1.4 Who Should Use this Software?

The capability of Kernel for Paradox to repair large sized paradox database (.DB) files makes it appropriate for use by people, who are striving to deal with corruption in database files. This corruption could have been caused due to unexpected system shutdown, software crash, deleted or damaged primary keys or foreign keys, damaged or corrupt unique key indexes, virus attacks etc

2. Getting Started

Now that you have understood the features and potential of Kernel for Paradox, you are ready to get hands on experience of the software. To start repairing .DB files, you will first need to download and install this software.

It is strongly recommended that before installing Kernel for Paradox, you should go through the installation pre-requisites for the software to ensure that your computer is appropriately configured to run the software.


2.1 Installation Pre-requisites

The various pre-requisites for installing and running Kernel for Paradox can be broadly classified into two major categories – Hardware requirements and Software requirements.

2.1.1 Hardware Requirements:

The hardware requirements for installing the software are as follows:

- Pentium Class Processor
- Minimum 64MB RAM (128 MB recommended)
- 10MB for Software installation
- Disk Space - Enough space to store the repaired files

 You should have at-least 10 MB of free disk space if you want to repair and save a 10 MB .DB file.

2.1.2 Software Requirements:

The software requirements for installing the software can further be grouped into two categories – Operating system requirements and Paradox version requirements. The requirements are as follows:

2.1.2.1 Operating System Requirements

Supported Operating Systems:

- Windows Vista
- Windows XP
- Windows 2003
- Windows 2000
- Windows Me

- Windows 98

2.1.2.2 Paradox Version Requirements

Supported Paradox versions:


- 3.0, 3.5, 4.0, 4.5, 5, 6, 7, 9 and 10 Paradox databases.

2.2 Downloading Kernel for Paradox for the First Time

After checking your computer with the prescribed system requirements for Kernel for Paradox, you can download and install the software on your computer. You can buy the full version of the software from any one of our authorized resellers – Element5, Asknet and 2CO.

If you want to try using Kernel for Paradox before buying it, you can download the evaluation version from the following link:

<https://www.nucleustechnologies.com/Download-Paradox-Database-Repair-Software.php>

 You can repair paradox database files saved on your system by using the evaluation version of Kernel for Paradox; however, the repaired file will not be saved until you purchase full version of the software.

2.3 Install Kernel for Paradox

After downloading the installer file for Kernel for Paradox, you can install the software by running the file. To install Kernel for Paradox:

1. Double-click the Kernel for Paradox installer. Follow the on-screen instructions.

The **Setup Installation Complete** screen will be displayed.

2. Click **Finish** to launch the software.

2.4 Start Kernel for Paradox

To start Kernel for Paradox:

Click the **Start → All Programs → Kernel for Paradox**

Alternatively, you can launch Kernel for Paradox by double-clicking the shortcut icon available on the Desktop and Quick Launch icon.


2.5 Uninstall Kernel for Paradox

You may need to uninstall Kernel for Paradox. To uninstall Kernel for Paradox:

1. Click the **Start → All Programs → Kernel for Paradox → Uninstall Kernel for Paradox**

A warning message will be displayed.

2. Click '**Yes**' to uninstall Kernel for Paradox.

 Before proceeding to uninstall Kernel for Paradox, you must ensure that the software is not running in the system background.

You can alternatively uninstall Kernel for Paradox from the **Control Panel** by performing the following steps:

1. Click the **Start Menu → Control Panel** and then double click the **Add or Remove Programs** icon.
2. Select **Kernel for Paradox** and click **Remove**. A warning message will be displayed.
3. Click '**Yes**' to uninstall Kernel for Paradox.

3. Software Interface

Now that Kernel for Paradox has been installed on your computer, you can start using the software after getting acquainted with the software interface.

3.1 Menu-bar

The menu-bar of Kernel for Paradox comprises three main menus – File, Tools, and Help.

3.1.1 File Menu

The **File** menu comprises four menu items.

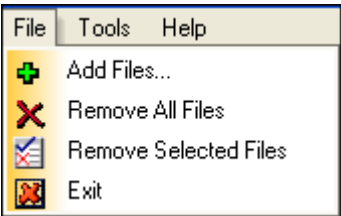


Figure 3.1: File Menu

Menu items in the **File** menu:

Field Name	Field Description
Add Files	Select to add corrupt DB file(s)
Remove All Files	Select to remove all file(s) from the list
Remove Selected Files	Select to remove selected file(s) from the list
Exit	Select to close the software

3.1.2 Tools Menu

The **Tools** menu comprises two menu items.



Figure 3.2: Tools Menu

Menu Items in the **Tools** menu:

Field Name	Field Description
Setting	Select to configure file name prefix
Liveupdate	Select to update current software with the latest version available

3.1.3 Help Menu

The **Help** menu comprises three menu items.

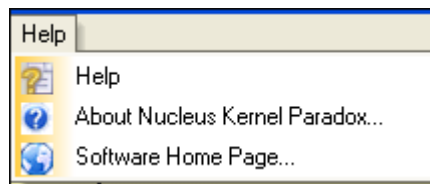








Figure 3.3: Help Menu

Menu items in the **Help** menu:

Field Name	Field Description
Help	Select to view User Guide of software
About Kernel Paradox	Select to view version-related and support information of Kernel for Paradox
Software Home Page...	Select to visit the software homepage

3.2 Tool-bar

The tool-bar in Kernel for Paradox is displayed below the menu-bar. The tool-bar provides a convenient and user-friendly method to perform certain actions that can also be performed by using the menu-bar. Read the information in the table below to find out about the tool-bar buttons:

Button	Button Name	Button Description
	Add Files	Select to add corrupt DB file(s)
	Repair Files	Select to repair the listed file(s)
	Save Files	Select to save the repaired file(s)
	Settings	Select to change the prefix of the repaired file name
	Live-Update	Select to update current software with the latest version available
	Buy Online	Select to buy the software online

3.3 Status Bar





Status bar is displayed at the bottom of the software window. The text 'Ready' is displayed on the status bar if Kernel for Paradox is ready to be used. Status bar also displays the text 'CAP', 'NUM', 'SCRL' which respectively correspond to the Caps Lock, Num Lock, and Scroll Lock keys on your keyboard. If any of these keys are pressed, the color of the corresponding text will turn black.



Figure 3.4: Status Bar

3.4 Buttons Used

Apart from the standard options available in menu-bar and tool-bar, following are the main buttons displayed on the respective window(s).

	Click to remove all files from the list
	Click to remove selected files from the list
	Click to start the repairing process
	Click to go to the main window

4. Repairing Paradox .DB Files

Now that you have complete familiarity of the user interface of Kernel for Paradox, you are ready to repair .DB files. To repair .DB files:

1. Launch Kernel for Paradox.

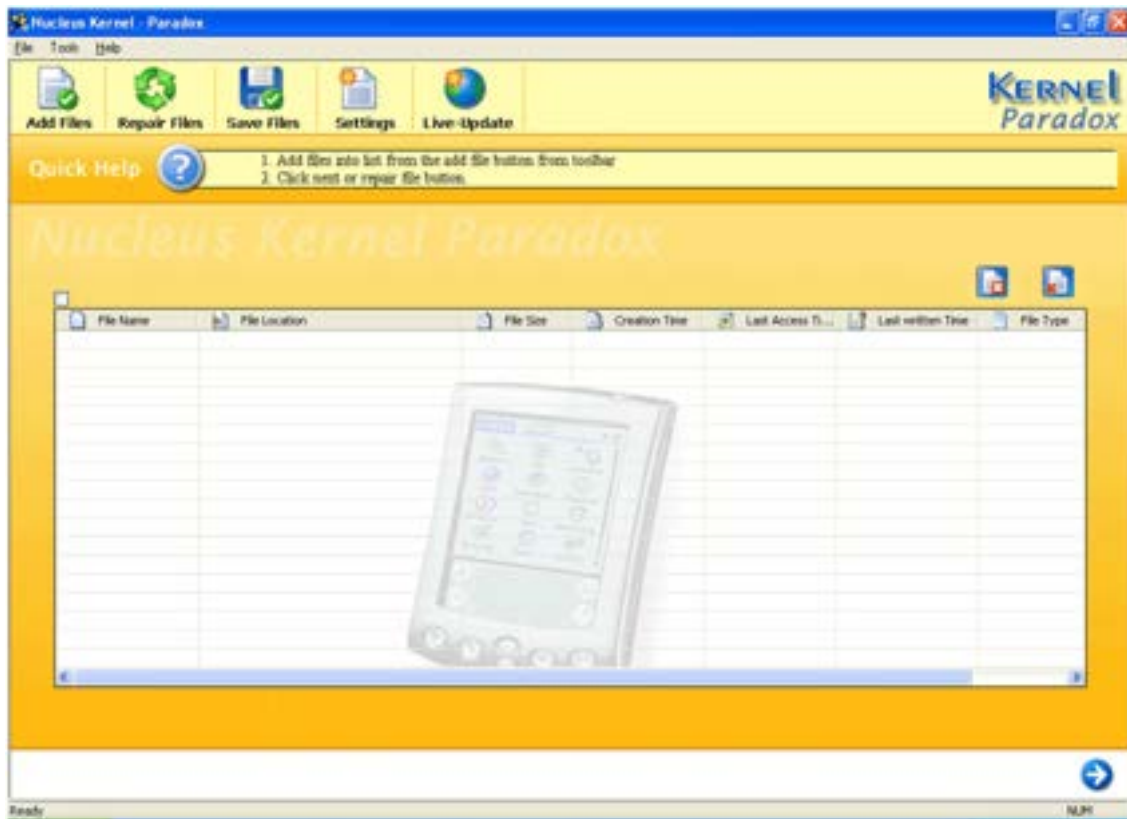


Figure 4.1: Main Window

2. Select the corrupt file(s) from **Add Files**  button or click **Files → Add Files**.

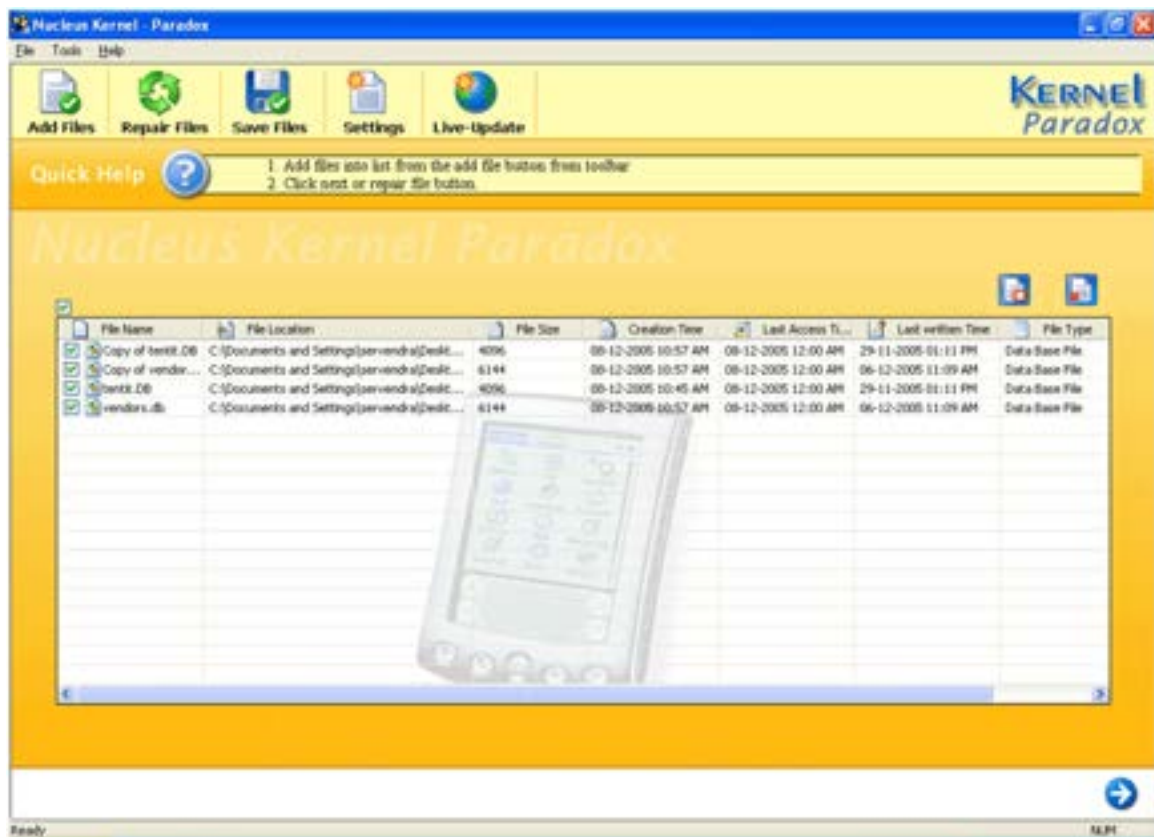




Figure 4.2: Added DB Files

You can select multiple .DB files to repair them in one repair cycle. You can remove any file from the list by selecting the file from the list and clicking **Remove Files** button.

3. Click **Next**  to start with .DB file repairing process or select **Repair Files**  button.

Kernel for Paradox starts the file repairing process and shows you the details of the corrupted file(s).

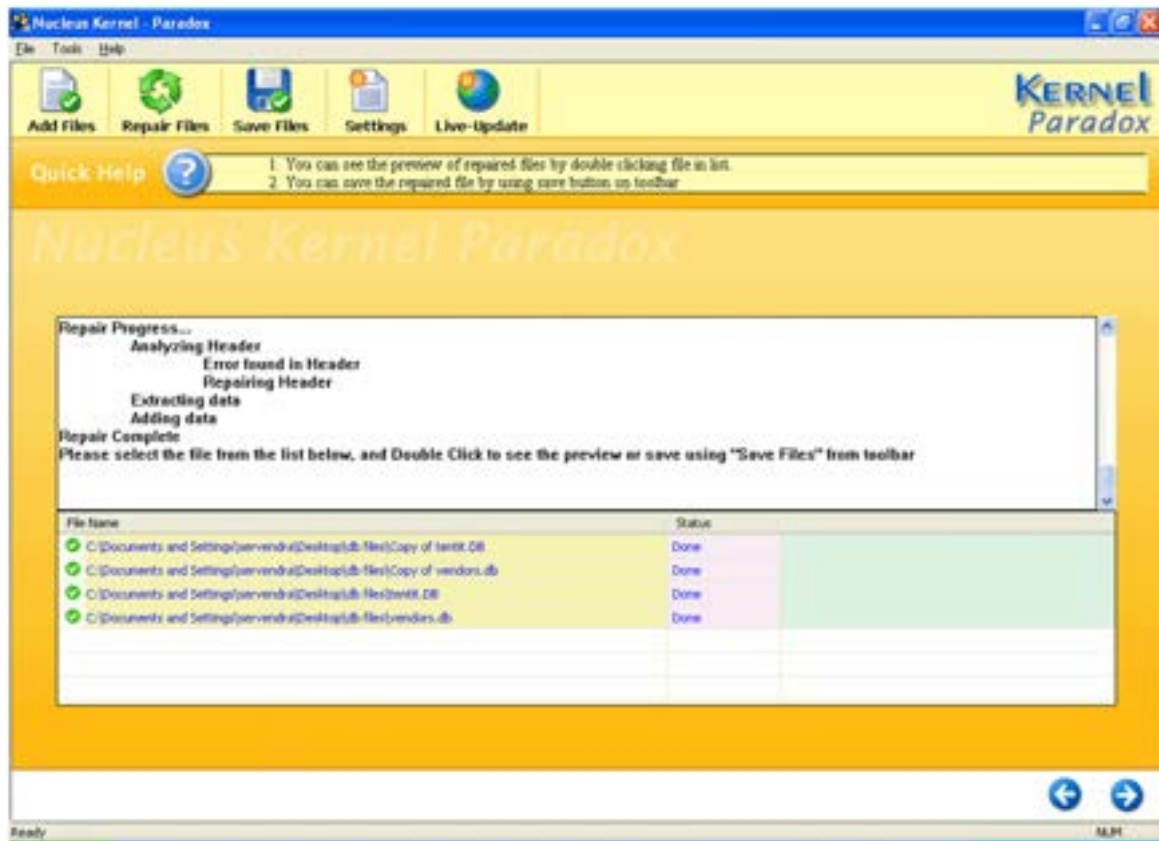


Figure 4.3: Details of Files

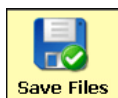
4. Get preview of the repaired files by double clicking the file(s) in the list.

C:\Documents and Settings\kervendra\Desktop\p1b files\Copy of testit.DB

Sala	Kursibunnat	Pem	Amman
010570-676K	long integer value	date value	long integer value
010570-676K	long integer value	date value	long integer value
010570-676K	long integer value	date value	long integer value
010570-676K	long integer value	date value	long integer value
110574-222K	long integer value	date value	long integer value
110574-222K	long integer value	date value	long integer value
111171-895K	long integer value	date value	long integer value
111171-895K	long integer value	date value	long integer value
141070-121K	long integer value	date value	long integer value
141269-232K	long integer value	date value	long integer value
141269-232K	long integer value	date value	long integer value
141269-232K	long integer value	date value	long integer value
141269-232K	long integer value	date value	long integer value
191177-788K	long integer value	date value	long integer value
191177-788K	long integer value	date value	long integer value
191177-788K	long integer value	date value	long integer value
191177-788K	long integer value	date value	long integer value
210776-121K	long integer value	date value	long integer value
210776-121K	long integer value	date value	long integer value
210776-121K	long integer value	date value	long integer value
230173-111K	long integer value	date value	long integer value
230173-111K	long integer value	date value	long integer value
230173-111K	long integer value	date value	long integer value
230173-111K	long integer value	date value	long integer value
230173-111K	long integer value	date value	long integer value
230475-232K	long integer value	date value	long integer value
230475-232K	long integer value	date value	long integer value

OK Cancel

Figure 4.4: Preview



5. Click **Save Files** to save the repaired files at the desired location.

By default, names of the repaired .DB files will be the original file name prefixed by the text 'Rep'. However, you can change the prefix by clicking the Settings button in the toolbar.

5. Full Version

Although you can use Kernel for Paradox evaluation version for free and experience the working of the software, there are certain features that are not available in the evaluation version.

5.1 Requirement of Full Version

By using the evaluation version of Kernel for Paradox, you can repair corrupt Paradox database files; however, you cannot save the repaired files with recovered data.

You will need to buy full version of the software to save the recovered results.

5.2 Purchasing Full Version

You can buy the full version of Kernel for Paradox from any one of our authorized resellers – Element5, Asknet and 2CO.

As soon the purchase transaction with our resellers gets completed, our sales team will send you an email comprising the URL to download the full version of Kernel for Paradox and activation details of the software.

6. Support

We have an extensive and efficient support system in place to assist our customers with all issues related to using Kernel for Paradox. The software comes with an embedded help manual that can be accessed by clicking **Help→ Help** in the menu-bar. You can also press the F1 key on the keyboard of your computer to access the embedded help of Kernel for Paradox.

You can access the online help for Kernel for Paradox at <https://www.nucleustechnologies.com/Online-Helps.html>

View Animated Working demo of the software at https://www.nucleustechnologies.com/Animated_Paradox_Database_Recovery.html

We also have live support wherein you can chat with our software experts at <https://www.nucleustechnologies.com/supportcenter/>

To talk on phone with our software experts call:

Help line:

+91-9818725861

1-866-348-7872 (Toll Free for USA/CANADA)

You can also email us about your queries at;

sales@nucleustechnologies.com for Sales

support@nucleustechnologies.com for Support

contact@nucleustechnologies.com for General Queries

7. Troubleshooting

This section deals with your generic and specific queries pertaining to using Kernel for Paradox.

7.1 Common Issues

Why does Kernel for Paradox have limitations in evaluation copy?

The free evaluation version of Kernel for Paradox is intended to enable you to experience the capabilities of the software. You will need to buy the software for saving the recovered data.

7.2 Frequently Asked Questions

How to Buy Kernel for Paradox?

You can buy Kernel for Paradox online at <https://www.nucleustechnologies.com/Buy-Paradox-Database-Repair-Software.php>

I have lost my full version for Kernel for Paradox. Can you help me?

Please email us at sales@nucleustechnologies.com. Please include your name, address, email address, and order confirmation number (if you have it). We will be happy to help you.

8. Legal Notices

This section comprises the legal specification about Kernel for Paradox and the company KernelApps Private Limited

8.1 Copyright

KernelApps Private Limited, Kernel accompanied user manual and documentation are copyright of KernelApps Private Limited, with all rights reserved. Under the copyright laws, this user manual cannot be reproduced in any form without the prior written permission of KernelApps Private Limited. No Patent Liability is assumed, however, with respect to the use of the information contained herein.

© KernelApps Private Limited. All rights reserved.

8.2 Trademark

Kernel ® is a copyright work of KernelApps Private Limited

Windows 95®, Windows 98®, Windows ME®, Windows NT®, Windows 2000 Server®, Windows 2000 Advanced Server®, Windows 2003 Server®, Windows XP®, MS-DOS and Paradox are registered trademarks of Microsoft Corporation and Corel Corporation respectively.

All other brand and product names are trademarks or registered trademarks of their respective companies.

8.3 Disclaimer

The Information contained in this manual, including but not limited to any product specifications, is subject to change without notice. KernelApps Private Limited provides no warranty with regard to this manual or any other information contained herein and here by expressly disclaims any implied warranties of merchantability or fitness for any particular purpose with regard to any of the foregoing KernelApps Private Limited assumes no liability for any damages incurred directly or indirectly from any technical or typographical errors or omissions contained herein or for discrepancies between the product and the manual. In no event shall KernelApps Private Limited, be liable for any incidental, consequential special, or exemplary damages, whether based on tort, contract or otherwise, arising out of or in connection with this manual or any other information contained herein or the use there of.

8.4 License Agreement

Kernel PARADOX Copyright © by KernelApps Private Limited

Your Agreement to this License

You should carefully read the following terms and conditions before using, installing or distributing this software, unless you have a different license agreement signed by KernelApps Private Limited. The terms and conditions of this License describe the permitted use and users of each Licensed Copy of Kernel PARADOX. For purposes of this License, if you have a valid license, you have the right to use a single Licensed Copy of Kernel.

Scope of License

Each Licensed Copy of Kernel may either be used by a single person or used non-simultaneously by multiple people who use the software personally installed on a single workstation.

All rights of any kind in Kernel, which are not expressly granted in this License, are entirely and exclusively reserved to and by KernelApps Private Limited. You may not rent, lease, modify, translate, reverse engineer, decompile, disassemble, or create derivative works based on, Kernel, nor permit anyone else to do so. You may not make access to Kernel available to others in connection with a service bureau, application service provider, or similar business, nor permit anyone else to do so.

Warranty Disclaimers and Liability Limitations

Kernel, and any and all accompanying software, files, data and materials, are distributed and provided as is and with no warranties of any kind, whether expressed or implied. In particular, there is no warranty for the quality of data recovered. You acknowledge that good data processing procedure dictates that any program, including Kernel, must be thoroughly tested with non-critical data before there is any reliance on it, and you hereby assume the entire risk of all use of the copies of Kernel covered by this License. This disclaimer of warranty constitutes an essential part of this License.

In addition, in no event does KernelApps Private Limited authorize you or anyone else to use Kernel in applications or systems where Kernel failure to perform can reasonably be expected to result in a significant physical injury, or in loss of life. Any such use is entirely at your own risk, and you agree to hold KernelApps Private Limited harmless from any and all claims or losses relating to such unauthorized use.

General

This License is the complete statement of the agreement between the parties on the subject matter, and merges and supersedes all other or prior understandings, purchase orders, agreements and arrangements. This License shall be governed by the laws of the State of Delhi. Exclusive jurisdiction and venue for all matters relating to this License shall be in courts and for a located in the State of Delhi, and you consent to such jurisdiction and venue. There are no third party beneficiaries of any promises, obligations or representations made by KernelApps Private Limited herein. Any waiver by KernelApps Private Limited of any violation of this License by you shall not constitute, nor contribute to, a waiver by KernelApps Private Limited of any other or future violation of the same provision, or any other provision, of this License.