

Kernel Migrator for Exchange

Decommission Exchange
Server 2007

A decorative graphic at the bottom of the slide consists of several overlapping, semi-transparent geometric shapes, primarily triangles and polygons, in shades of dark blue, green, yellow, and orange, creating a stylized mountain range or abstract landscape effect.

Contents

1. Introduction	3
2. Steps for decommissioning Exchange Server 2007	3
3. Backup Exchange Server.....	3
4. Migrate User Mailboxes	4
5. Migrate Public Folders	4
6. Remove User Mailboxes	6
7. Disable Local Continuous Replication	8
8. Stop its Usage.....	10
9. Remove Public Folder Database.....	10
9.1 Force Removal of Public Folder Database	14
10. Remove User Mailbox Database	15
11. Remove Storage Group	16
12. Move Offline Address Book (OAB)	17
13. Move Routing Group Connector	20
14. Remove Exchange Administrative Group	21
15. Uninstall Exchange Server 2007	22
15.1 Command to Uninstall Exchange Server 2007 Role	25
16. Support.....	26
17. Copyright.....	27
18. Warranty Disclaimers and Liability Limitations.....	27
19. Trademarks.....	27

1. Introduction

Before decommissioning Exchange Server 2007, please make sure that all mailboxes and their content have been moved to another Exchange Server. Please also ensure that backups have been created if you want to preserve the mailboxes and their content.

The administrator must disconnect all mailbox-enabled users from their respective Exchange mailboxes before starting the decommissioning process.

2. Steps for decommissioning Exchange Server 2007

The steps to decommission Exchange Server 2007 are listed below.

1. Backup Exchange Server along with its User Mailbox database(s) and Public Folder database(s)
2. Migrate user mailboxes with their complete properties and settings to another Exchange Server
3. Migrate Public Folders to another Exchange Server
4. Disable Local Continuous Replication of User Mailbox Database and Public Folder Database
5. Remove User Mailboxes
6. Stop the usage of Exchange Server 2007
7. Remove the Public Folder Database
 - a. Force removal of Public Folder Database
8. Remove the User Mailbox Database
9. Remove the Storage Groups
10. Remove or move the Offline Address Book (OAB)
11. Move Routing Group Connector to another Exchange Server
12. Remove Exchange Administrative Group, if no other Exchange Server is installed in the domain.
13. Uninstall Exchange Server 2007

These steps are explained in detail in this document.

3. Backup Exchange Server

Before migrating Public Folders decommissioning Exchange Server 2007, it is recommended to perform the following steps to backup Exchange Server along with its User Mailbox Database and Public Folder Database.

1. Go to “Start menu” → “All Programs” → “Accessories” → “System Tools”, and click “Backup.”

NOTE: If “Windows Server Backup” is not installed, then you have to install it from “Server Manager.”

2. Click “Backup Once” to access its wizard.
3. Select “Different Options” and click “Next.”
4. Select “Full Server” at “Select Backup Configuration” page and click “Next.”
5. Select the destination at “Specify Destination Type” page. It is recommended to save the backup at a remote drive.
6. Click “Next” to proceed.
7. Provide the path of the remote drive, where you want to save the backup.
8. Click “Next.” At “Confirmation” page, click “Backup” to start the backup.

It may take time depending upon the size of the backup and the connectivity to the drive where the backup is being stored.

4. Migrate User Mailboxes

Use native method or deploy a third-party tool to migrate the user mailboxes with their permissions, limits, and other properties to another Exchange Server.

5. Migrate Public Folders

If you want to migrate the Public Folders from Exchange Server 2007 to another Exchange in the same domain along with their permissions and properties, then you can use native method. It is recommended to take the backup of Public Folder Database before performing these steps to migrate the Public Folders.

NOTE: To move the Public Folders quickly using these steps, it is recommended to set the Replication Schedule as “Always Run” of all Public Folders at source Exchange Server 2007 before executing these commands. Perform the following steps.

1. Go to “Public Folder Management Console.”
2. Double click a Public Folder to access its properties.
3. Switch to “Replication Tab.”
4. Uncheck “Use public folder database replication schedule.”
5. Select “Always Run” instead of a customized replication schedule.
6. Click “Apply” and “OK.”
7. Repeat the steps 2 to 6 for each Public Folder.

You can perform the following steps to migrate the Public Folders in the same domain using the native method. In this test case, we have installed Exchange Server 2010 on another domain controller in the same domain.

You have to perform the following steps on the target Exchange Server 2010.

1. Go to “Start menu” → “All Programs” → “Microsoft Exchange Server 2010” and click “Exchange Management Shell.”

If you are not logged in as the Administrator, then right click on “Exchange Management Shell” and click “Run as Administrator.”

2. Execute the following command to go to the directory, which stores the scripts.

```
cd $exscripts
```

3. Execute the following command to add the replication of Exchange 2007 Public Folders in the Public Folder Database of Exchange Server 2010.

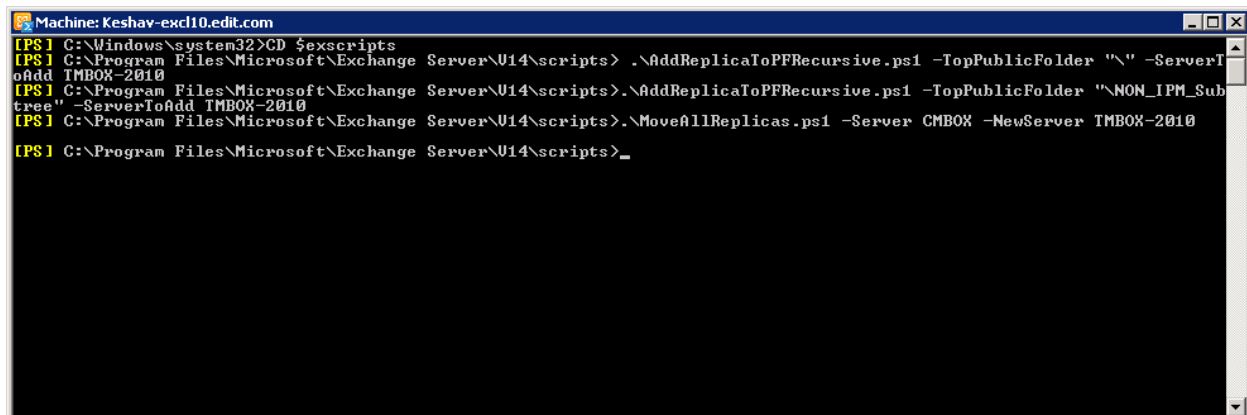
```
.\AddReplicaToPFRecursive.ps1 -TopPublicFolder "\" -ServerToAdd <TARGET_EXCHANGE_2010>
```

4. Execute the following command to add the replication of NON_IPMSUBTREE (System) Public Folders of Exchange 2007 at the Public Folder Database of Exchange Server 2010.

```
.\AddReplicaToPFRecursive.ps1 -TopPublicFolder "\NON_IPM_Subtree" -ServerToAdd <TARGET_EXCHANGE_2010>
```

5. Now, execute the following command to move all Public Folders of Exchange 2007 to the Public Folder Database of Exchange Server 2010 by moving their replicas.

```
.\MoveAllReplicas.ps1 -Server Source_Server -NewServer Target_Server
```



```
Machine: Keshav-excl10.edit.com
[PS] C:\Windows\system32>cd $exscripts
[PS] C:\Program Files\Microsoft\Exchange Server\U14\scripts> .\AddReplicaToPFRecursive.ps1 -TopPublicFolder "\" -ServerTo
oAdd TMB0X-2010
[PS] C:\Program Files\Microsoft\Exchange Server\U14\scripts>.\AddReplicaToPFRecursive.ps1 -TopPublicFolder "\NON_IPM_Sub
tree" -ServerToAdd TMB0X-2010
[PS] C:\Program Files\Microsoft\Exchange Server\U14\scripts>.\MoveAllReplicas.ps1 -Server CMB0X -NewServer TMB0X-2010
[PS] C:\Program Files\Microsoft\Exchange Server\U14\scripts>_
```

Figure 1: Adding and Moving Public Folder Replication

The above command may take two-three minutes or more, depending on the size of Public Folders and their content. If the replication interval of the Public Folders is not set to “Always Run”, then the migration may be completed on the next scheduled replication.

To verify the migration, you can create a profile in Microsoft Outlook of Exchange Server 2007. Once a profile is created, browse the Public Folders that has been moved. Outlook should show the error “Unable to display the folder.”

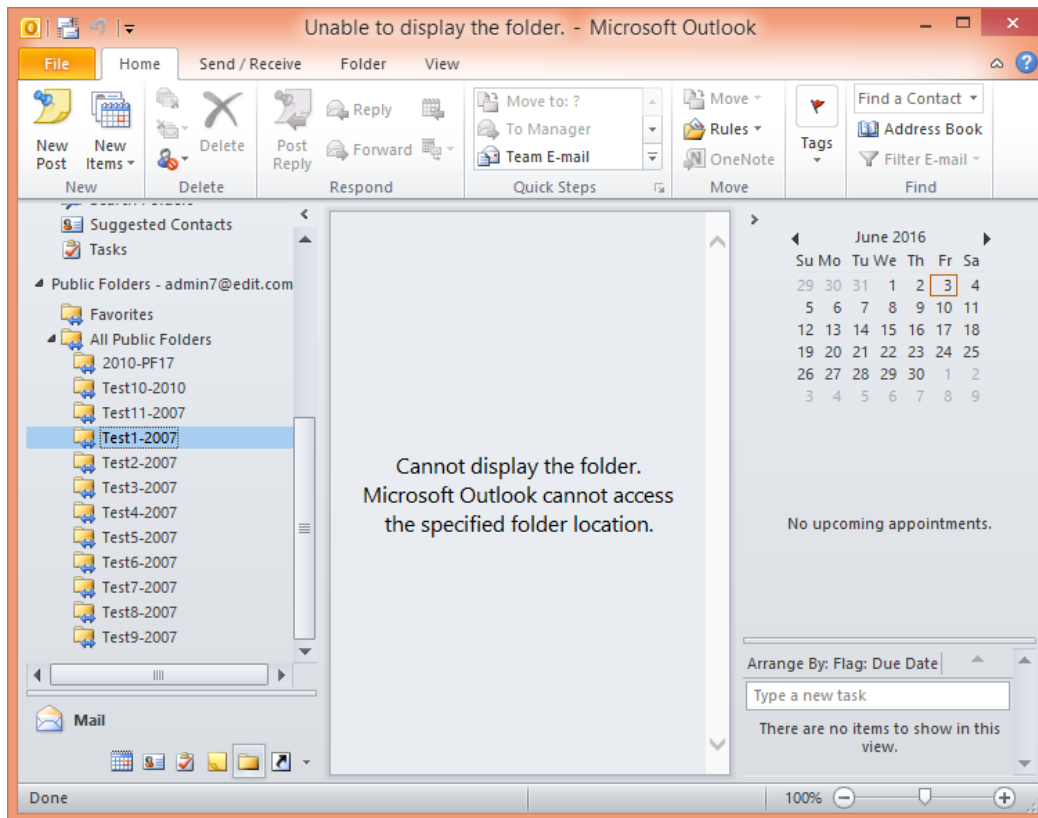


Figure 2: Outlook is not able to access moved Public Folder

6. Remove User Mailboxes

The Administrator has to remove the user mailboxes in order to disconnect all mail-enabled users from Exchange Server. Perform the following steps to remove the user mailboxes from Exchange Server 2007.

1. Go to “Start Menu” → “Microsoft Exchange Server 2007” → “Exchange Management Console.”
2. Once Exchange Server is initialized, go to “Recipient Configuration” → “Mailbox” in the left panel. It shows the list of user mailboxes.

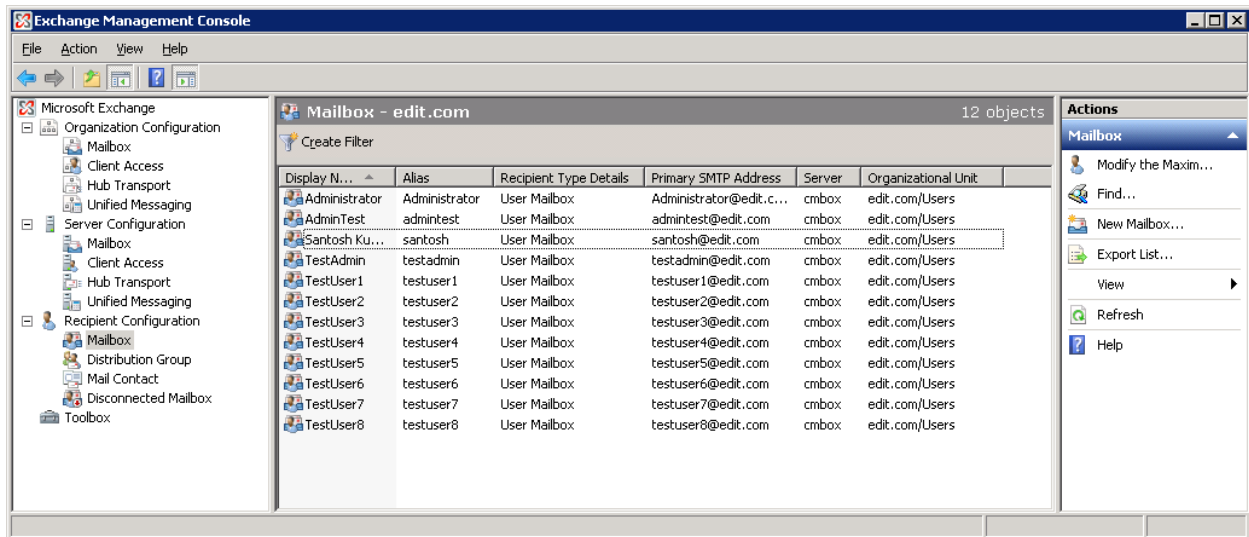


Figure 3: List of User Mailboxes

3. Select all mailboxes and do a right click.

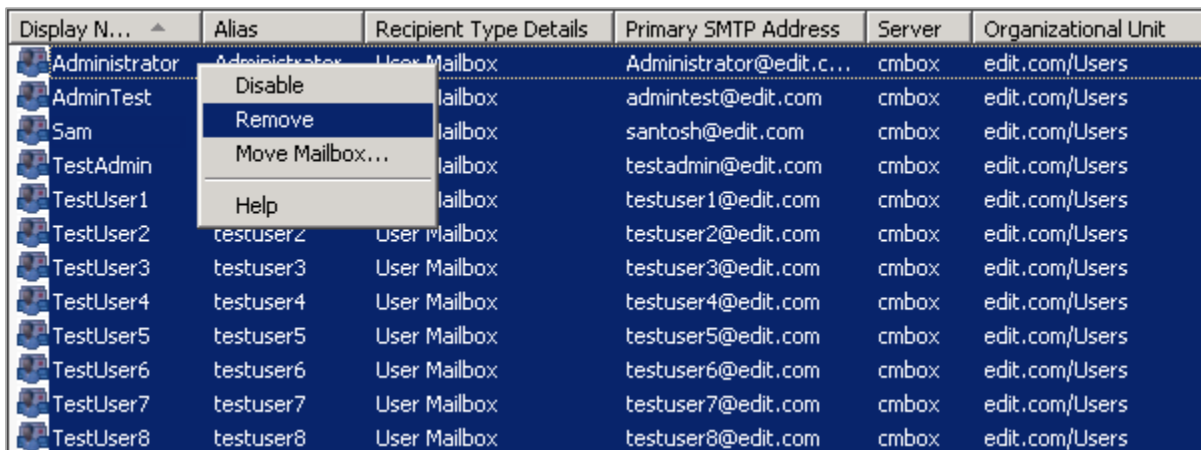


Figure 4: Right click on the user mailboxes

4. Click "Remove" option. The following warning message appears onscreen.

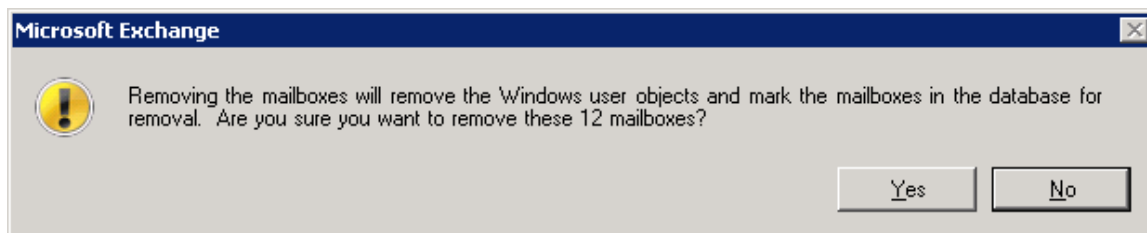


Figure 5: Warning before removing the mailboxes

5. Click "Yes" to remove the mailboxes. You may receive the following error while removing "Administrator" mailbox using the above step.

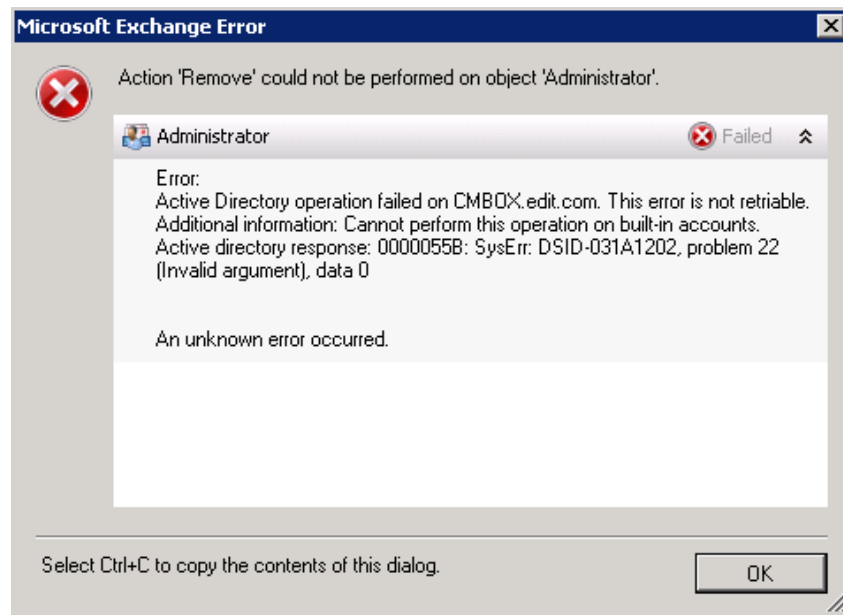


Figure 6: Error message while deleting “Administrator” mailbox

6. Click “OK” to close the error message.
7. Go back to the list of mailboxes, select “Administrator” mailbox and press “DEL” or “SHIFT+DEL” keys on the keyboard. It purges the administrator’s mailbox.

NOTE: If you have moved the Public Folders using above steps, then it is recommended not to

- stop the replication of Public Folders and Public Folder Database, and
- remove the Public Folders.

You can straightaway remove the Public Folder Database and move with other options to decommission Exchange Server.

7. Disable Local Continuous Replication

Local Continuous Replication is applied on the Storage Groups containing either Public Folder Database or User Mailbox Database. Perform the following steps to disable the local continuous replication for both User Mailbox Database and Public Folder Database.

1. In Exchange Management Console, expand the nodes, “Microsoft Exchange” → “Server Configuration” → “Mailbox” to access the mailboxes.
2. Right-click on the Storage Group, of which Local Continuous Replication, you want to stop.

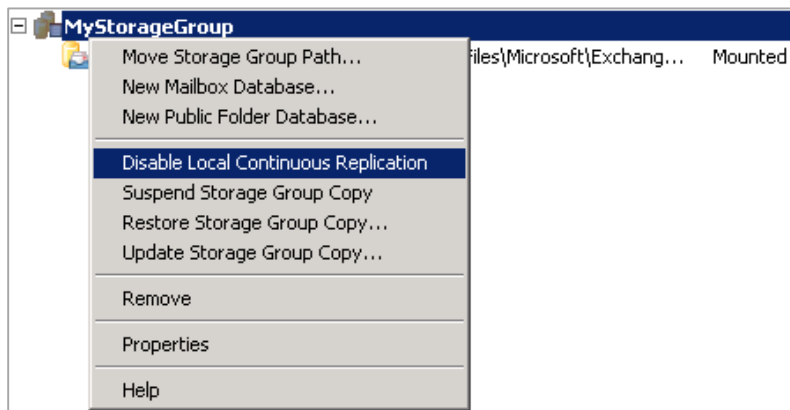


Figure 7: Right-click on Storage Group

3. Click “Disable Local Continuous Replication” option. It displays the following warning message.

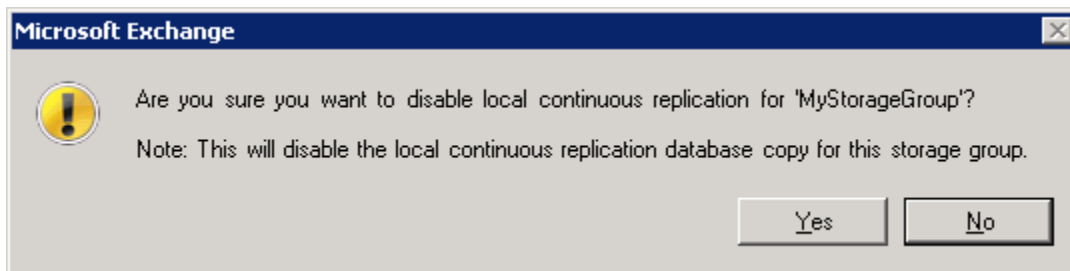


Figure 8: Warning message to disable Local Continuous Replication

4. Click “Yes” to stop the replication. It shows the following message box confirming the successful completion.

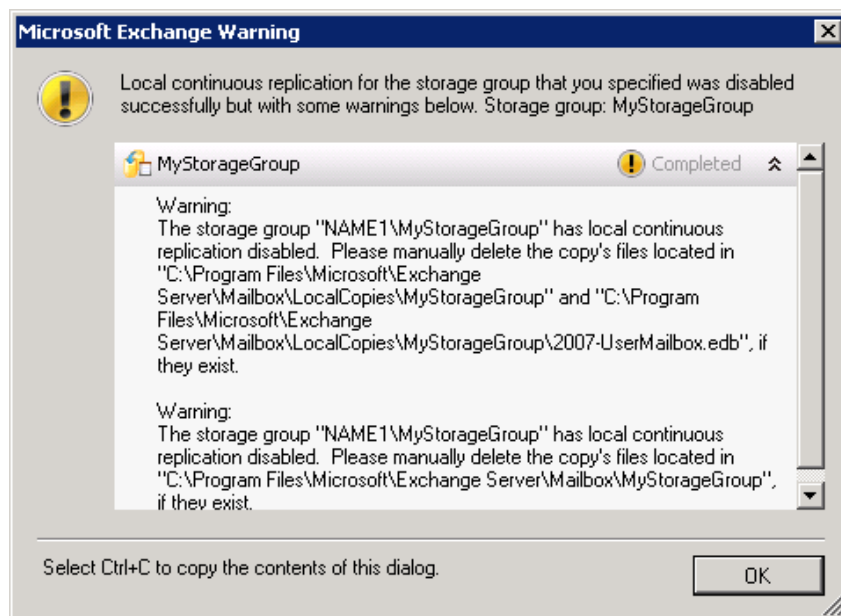


Figure 9: Disabled the Local Continuous Replication

5. Once Local Continuous Replication is disabled, you may remove the folders containing the replicated files, only if these are not required further. The path of these folders is displayed in the above message.
6. Click "OK" to close the dialog box and to complete the process.

8. Stop its Usage

You must shut down the Exchange Server 2007 to be decommissioned for at a minimum of two days and a maximum of two weeks. This will ensure that nothing is using this Exchange Server.

9. Remove Public Folder Database

Perform the following steps to remove the Public Folder Database.

1. In Exchange Management Console, in "Server Configuration" → "Mailbox", select the Public Folder Database and click "Remove." It shows the following warning message.

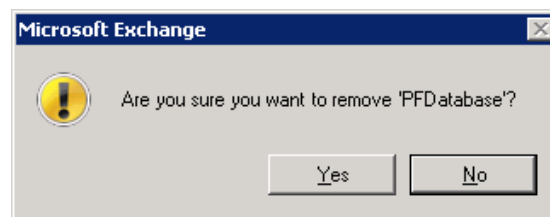


Figure 10: Warning to remove Public Folder Database

2. Click "Yes" to remove the Public Folder Database.

NOTE: If you are getting the following error message while deleting a Public Folder Database, then it means SSL is enabled for ExAdmin virtual directory.

The requested operation is forbidden.

ID no: c1030af1

Exchange System Manager

Perform the following steps to fix this error.

- a. Go to “Start menu” → “Administrative Tools” → “Internet Information Services (IIS) Manager.”
- b. In the left panel, go to “<Exchange_Server>” → “Sites” → “Default Web Site” and click “Exadmin.” It shows the properties of “Exadmin” in the Right Panel.

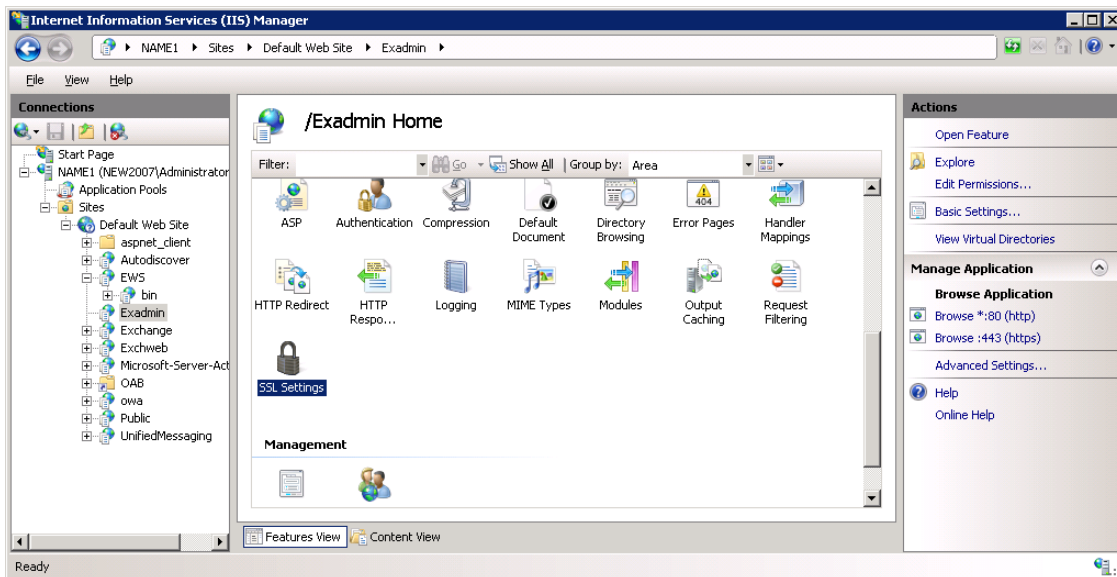


Figure 11: Exadmin in IIS Manager

- c. Double-click “SSL Settings” to access its options. Here, SSL is enabled by default in Exchange Server 2007.

- d. Click to clear “Require SSL” box. Please make sure it is unchecked.

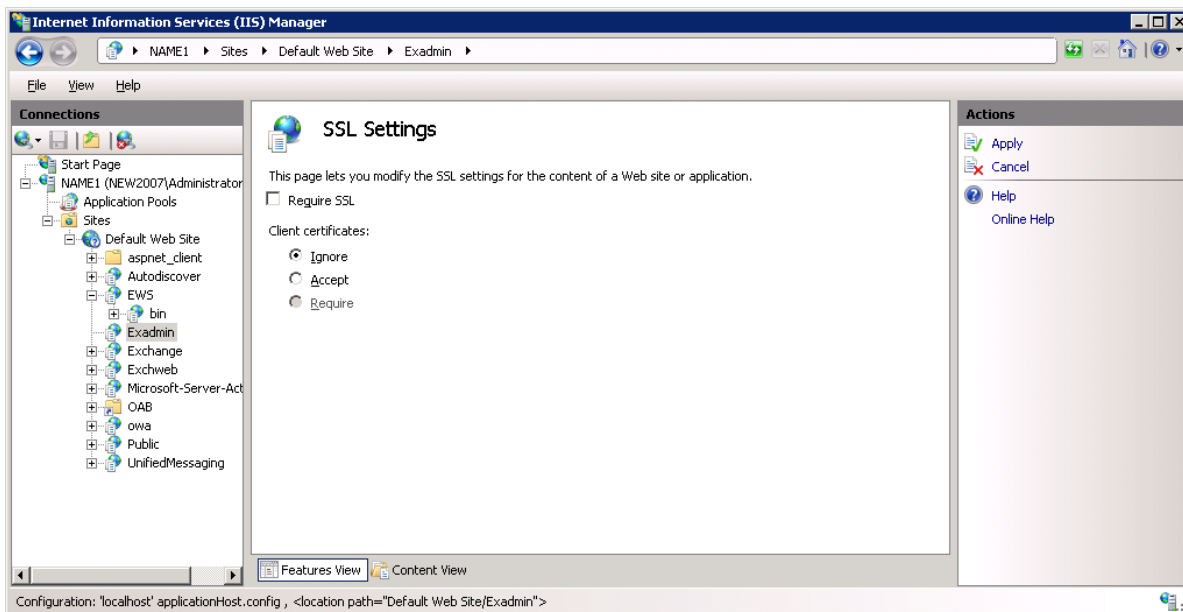


Figure 12: Disabling SSL in Exadmin

- e. Click “Apply” in the right section.
 f. Close IIS Manager.
3. If you are getting the following error message, then it means the replicas of Public Folders still exist on Exchange Server. You have to either move all replicas for migrating Public Folders to another Exchange Server or remove all replicas. Please refer to [Section 5 Migrate Public Folders](#) to move all replicas.

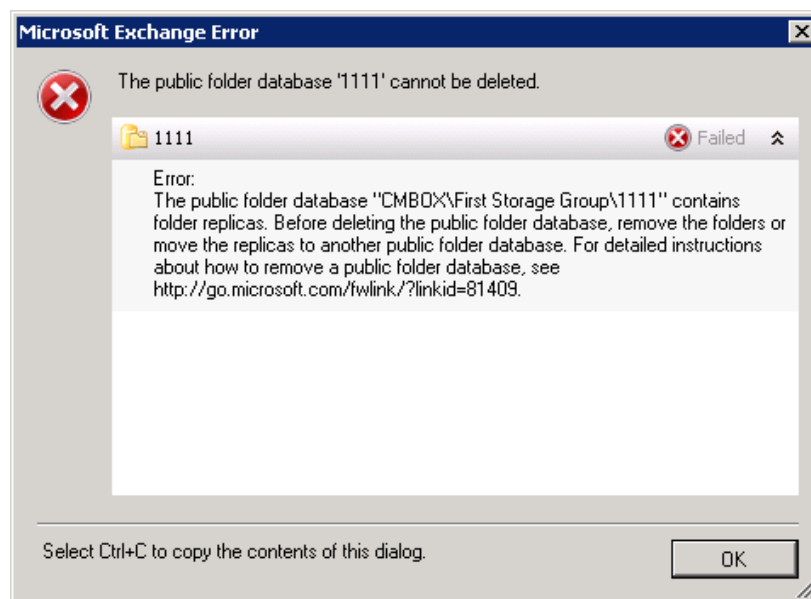


Figure 13: Error while removing Public Folder Database

Once you have moved or removed the replicas, then you can try again to remove the Public Folder Database.

If you are still facing another issue in removing the database, then please refer to [Section 9.1 to remove Public Folder Database forcefully](#).

4. If you are getting the following error message, please refer to [Section 9.1 to remove Public Folder Database forcefully](#).

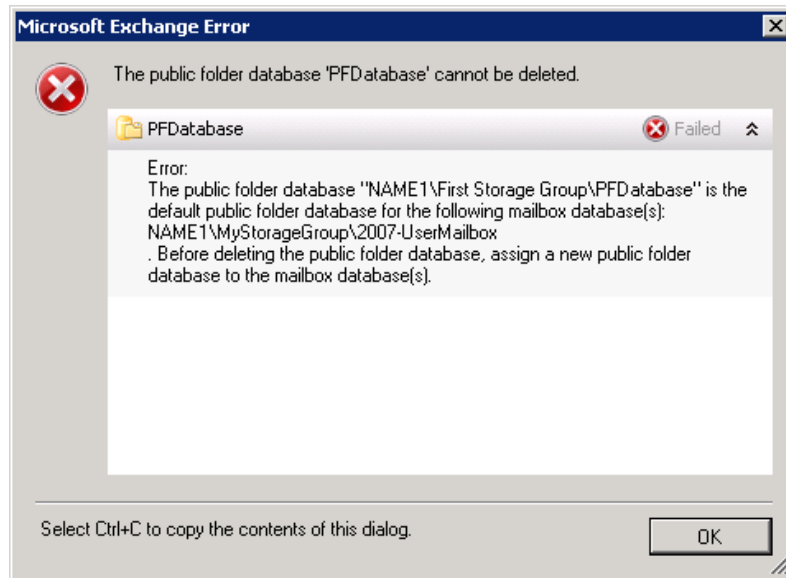


Figure 14: Error to remove Public Folder Database

5. The selected Public Folder Database will be removed only if there is no error message. The following dialog box confirms the same.

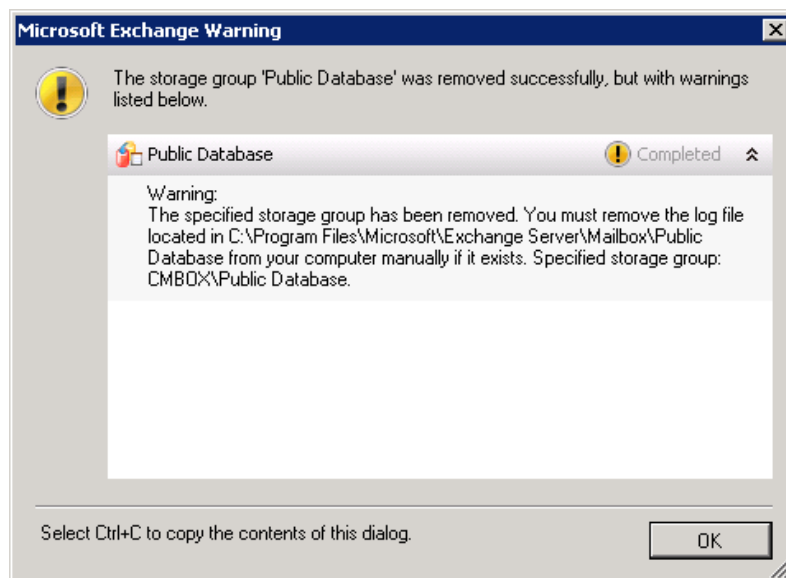


Figure 15: Removed the Public Folder Database

6. As per the message, you can remove the log file located at the specified path, if required.

7. Close “Exchange Management Console.”

9.1 Force Removal of Public Folder Database

Occasionally, you may not be able to remove the Public Folder Database while decommissioning Exchange Server 2007. You can use this method if you are experiencing difficulties removing the Public Folder Database.

Perform the following steps to remove the Public Folder Database using ADSIEdit.MSC forcefully.

1. Go to “Start menu” → “Administrative Tools”, click “ADSI Edit” to access its console.
2. Go to “Actions” menu and click “Connect to.” It shows “Connection Settings” dialog box.
3. Click “Select a well-known Naming Context” radio button and then select “Configuration” in the drop-down menu.

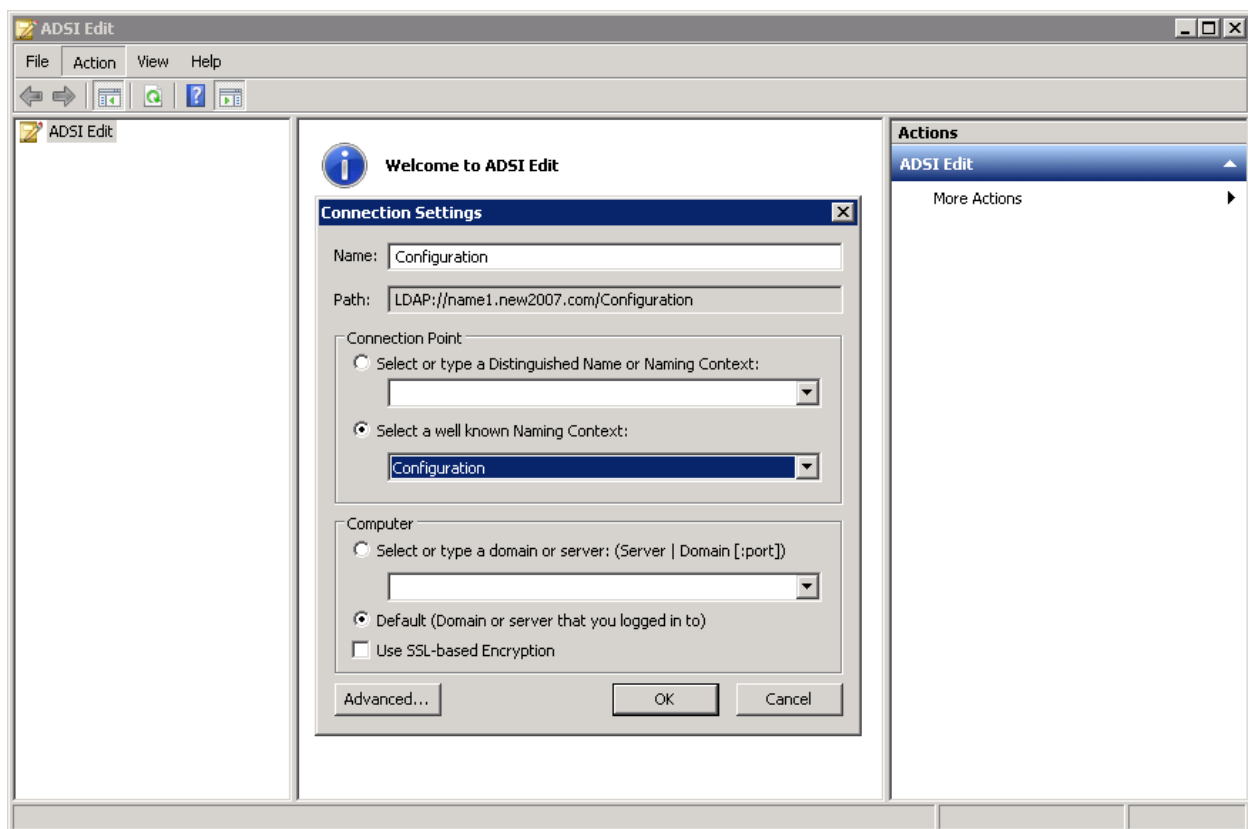


Figure 16: Connecting to a Naming Context in ADSI Edit

4. Click “OK.” It connects you to “Configuration” context.
5. In the left panel, go to “CN=Configuration,DC=DOMAIN,DC=COM” → “CN=Services” → “CN=Microsoft Exchange” → “CN=EXCHANGE_ORG” → “CN=Administrative Groups” → “CN=Exchange Administrative Group (FYDIBOHF23SPDLT)” → “CN=Servers” → “CN=EXCHANGE_NAME” → “CN=InformationStore”, click “CN=STORAGE_GROUP_NAME.”
6. It lists the databases in the Right Panel.

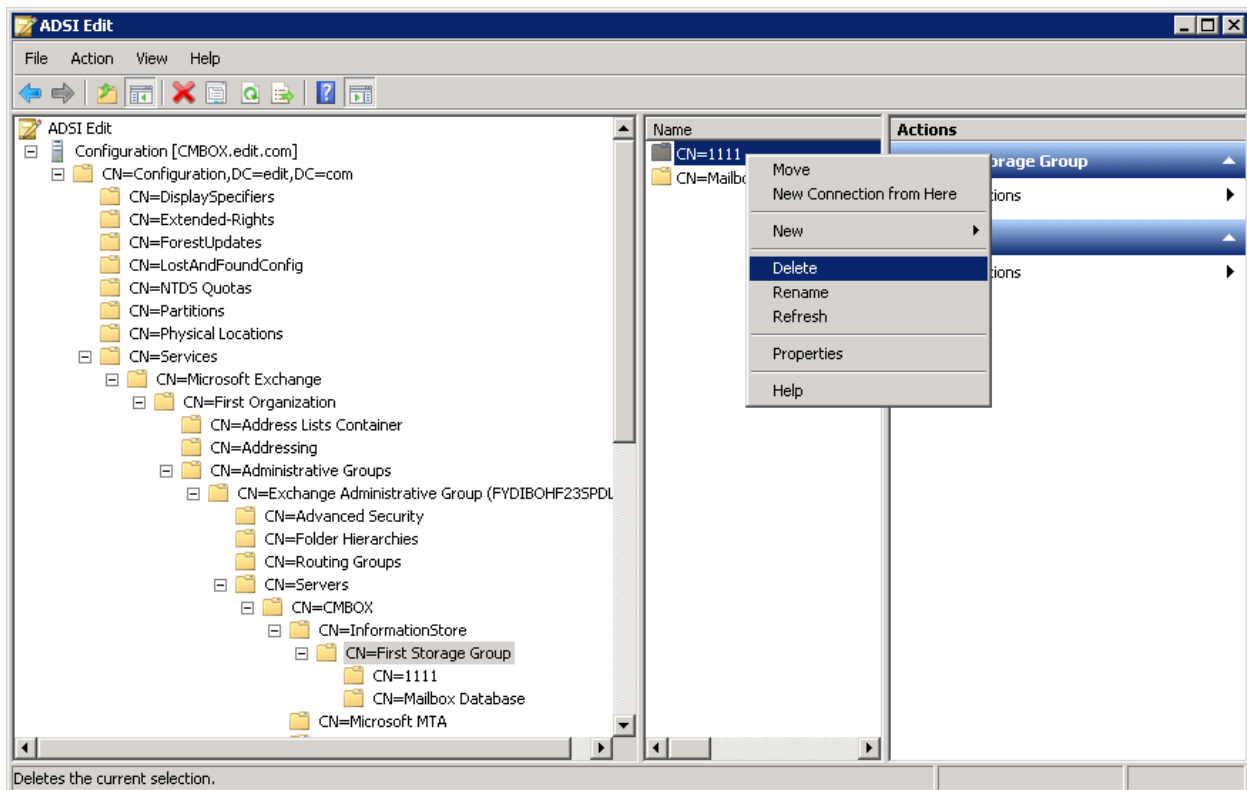


Figure 17: Deleting Public Folder Database from ADSIEdit.MSC

7. Right-click on “Public Folder Database” node and select “Delete.” It shows the following warning message.

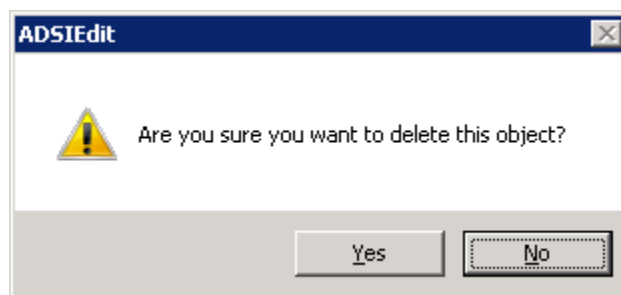


Figure 18: Warning to remove an object

8. Click “Yes” to remove the Public Folder Database.
9. Close “ADSIEdit.MSC.”

10. Remove User Mailbox Database

Perform the following steps to remove the User Mailbox Database.

1. In Exchange Management Console, go to “Server Configuration” → “Mailbox.” It shows the User Mailbox and Public Folder Databases in the Right Panel.
2. Select the User Mailbox Database and click “Remove.” It shows the following warning message.

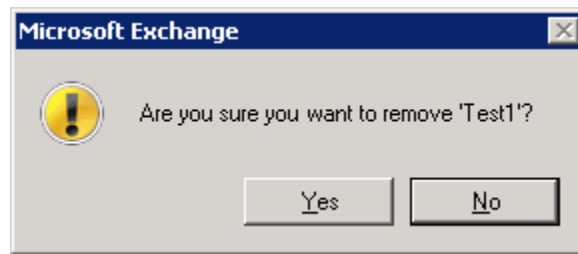


Figure 19: Warning to remove User Mailbox Database

3. Click "Yes" to remove the mailbox database. The following message box appears to confirm the successful deletion.

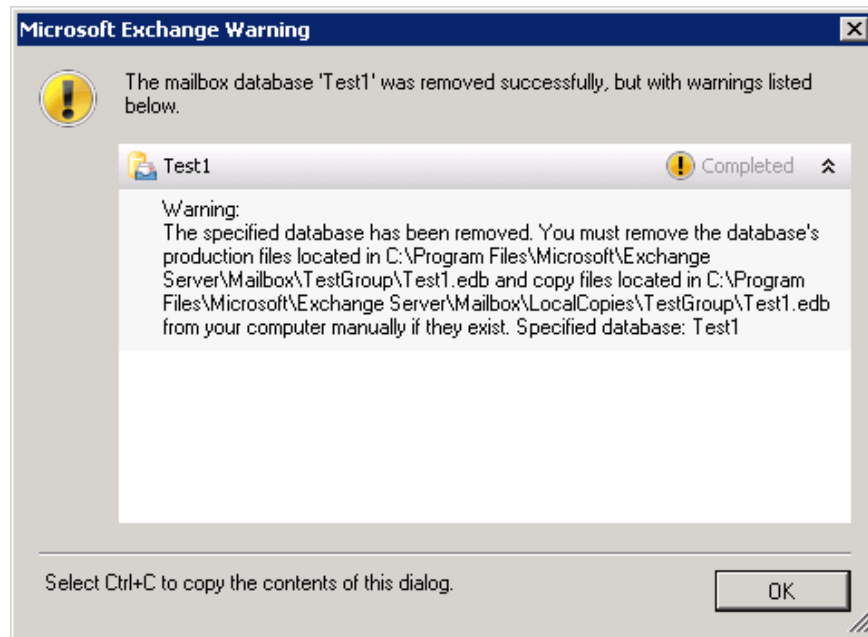


Figure 20: Removed the User Mailbox Database

4. You can remove the database file stored at the pointed location, if required.
5. You may also remove the local copy of the mailbox database created by Local Continuous Replication, only if you do not want to preserve a copy of the mailbox database.
6. Click "OK" to close the dialog box.

11. Remove Storage Group

Once both Public Folder Database and User Mailbox Database are removed, you have to remove the storage groups. Perform the following steps.

1. In Exchange Management Console, go to "Server Configuration" → "Mailbox." It shows the Storage Groups.
2. Select the Storage Groups and click "Remove" in "Actions" panel. It shows the following error message.

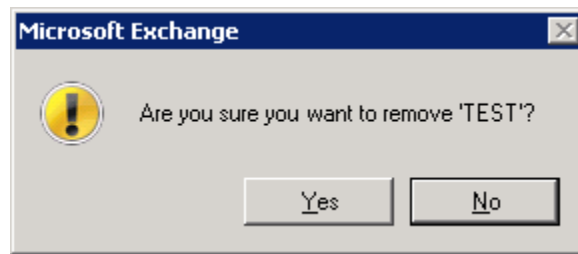


Figure 21: Warning before removing a Storage

3. Click "Yes" to remove the storage group.

12. Move Offline Address Book (OAB)

Perform the following steps to move the Offline Address Book (OAB) generation process from source Exchange Server 2007 to another Exchange Server in the same domain.

1. In Exchange Management Console, go to "Organization Configuration" → "Mailbox."
2. Select "Offline Address Book" tab in the right panel.

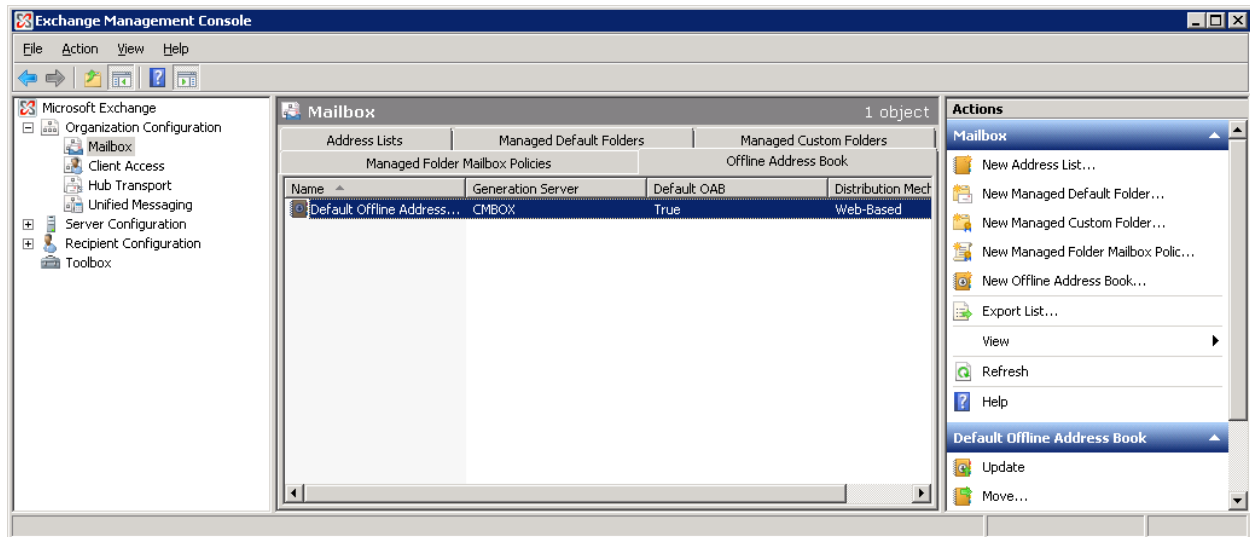


Figure 22 Offline Address Book Tab

3. Select an Offline Address Book that has to be moved, and click "Move" in "Actions" pane.

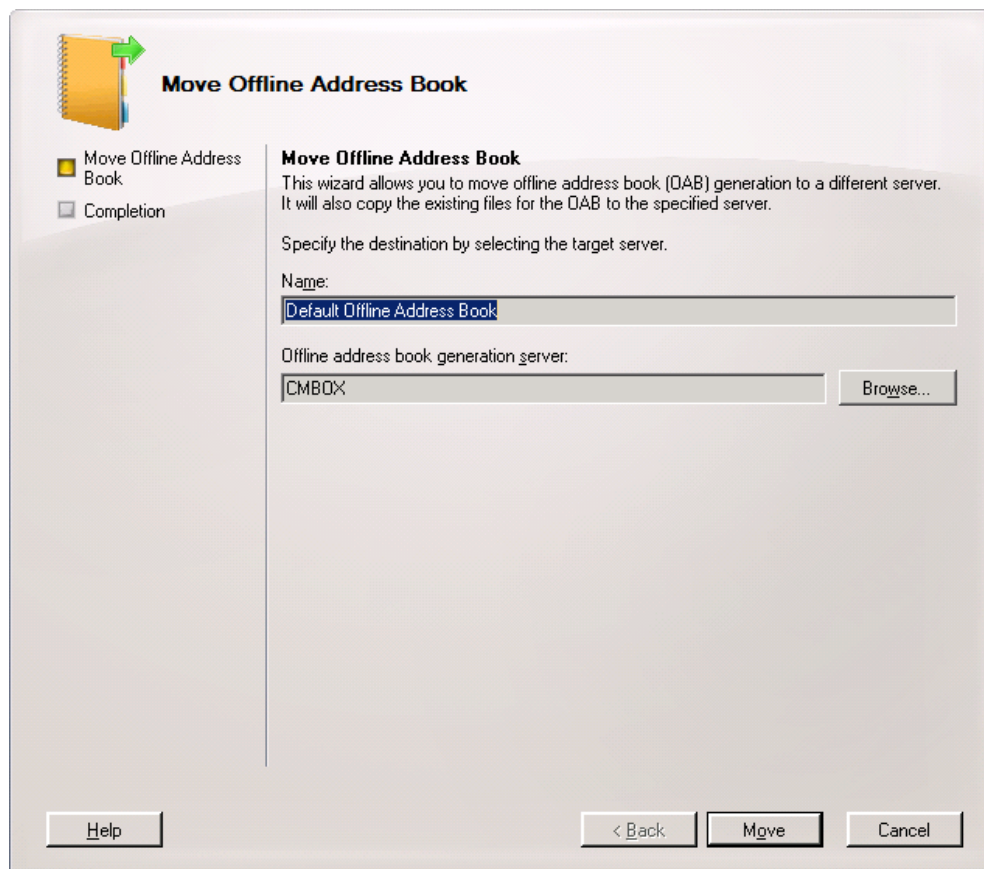


Figure 23: Moving Offline Address Book

- Click "Browse" to select the different Exchange Server in the following dialog box.

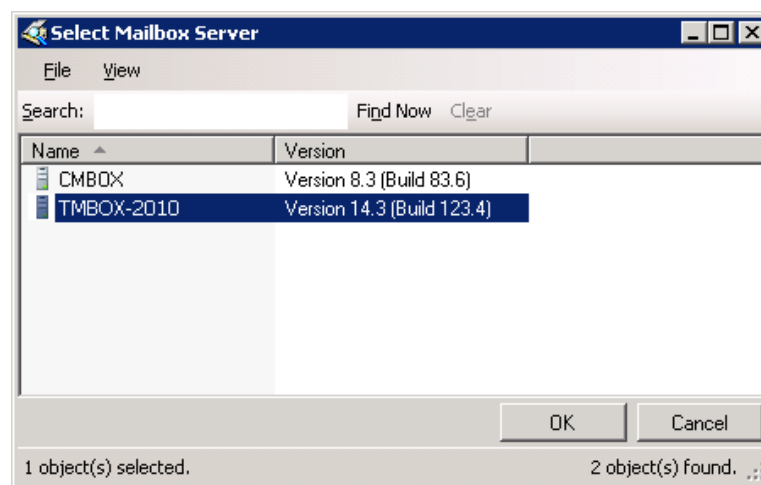


Figure 24: Select Exchange Server

- Select the different Exchange Server and click "OK.." It takes you back to the previous wizard, which now shows the changed server.

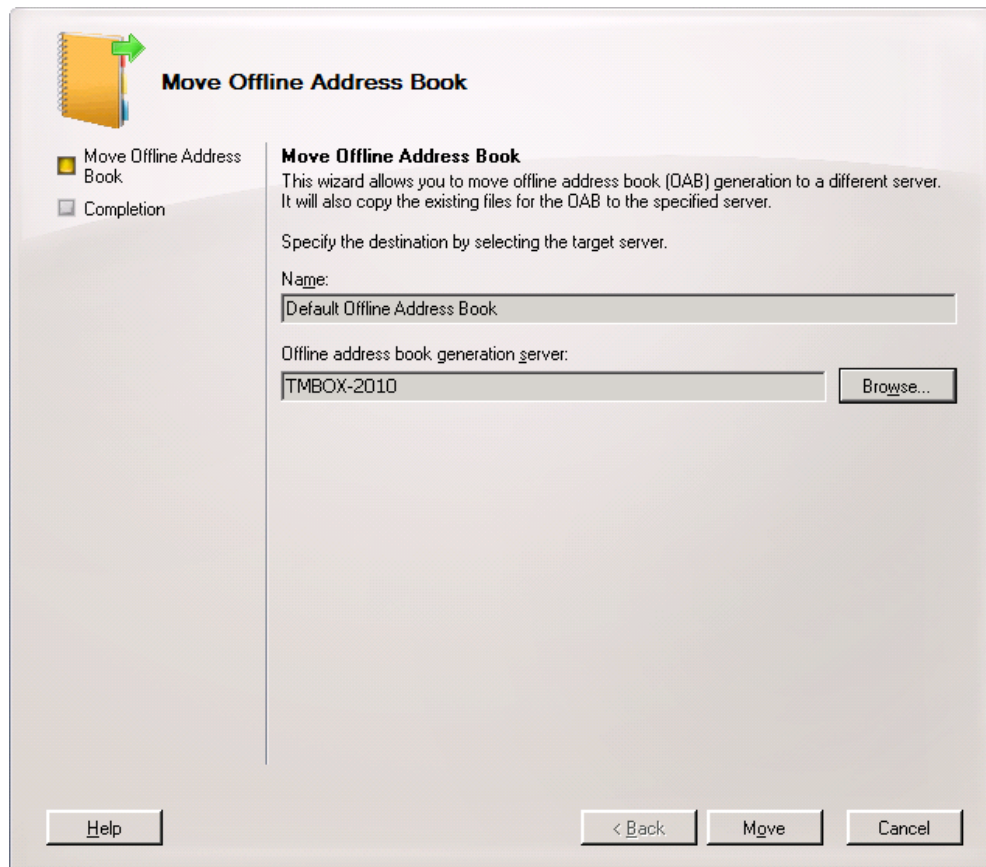


Figure 25: Selected the different server

6. Click "Move" to move the Offline Address Book generation process to the selected Exchange Server.

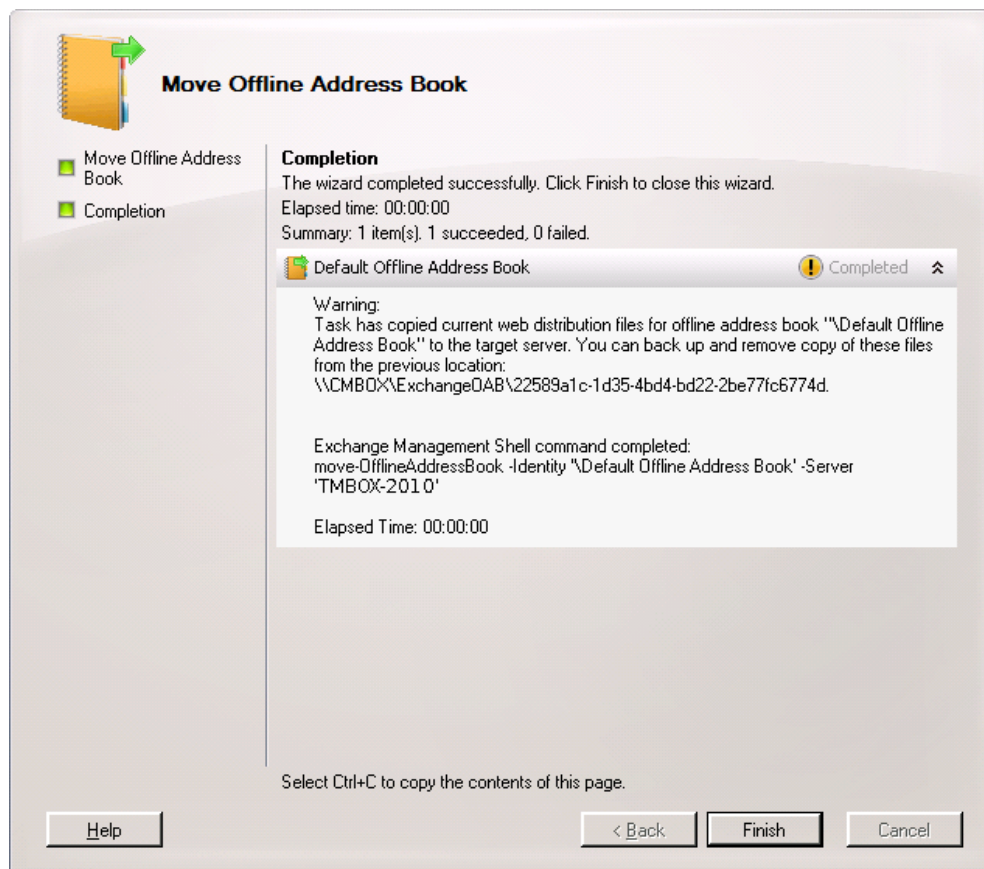


Figure 26: Changed Exchange Server of the generation of Offline Address Book

7. Click "Finish" to complete the process.

13. Move Routing Group Connector

You can move the Routing Group Connector of Exchange Server 2007 that has to be decommissioned, to another Exchange Server in the same domain. Perform the following steps to move the routing group connector.

1. At Exchange Management Shell, execute the following command to go to the directory, which stores the scripts.

```
cd $exscripts
```

2. Execute the following commands one by one to move the Routing Connector from source Exchange Server 2007 to the target Exchange Server, in our case, the target is Exchange Server 2010.

```
Get-RoutingGroupConnector | where {$_.SourceTransportServers -like "<SOURCE EXCHANGE 2007 SERVER>"} | Set-RoutingGroupConnector -SourceTransportServers "<TARGET EXCHANGE SERVER>"
```

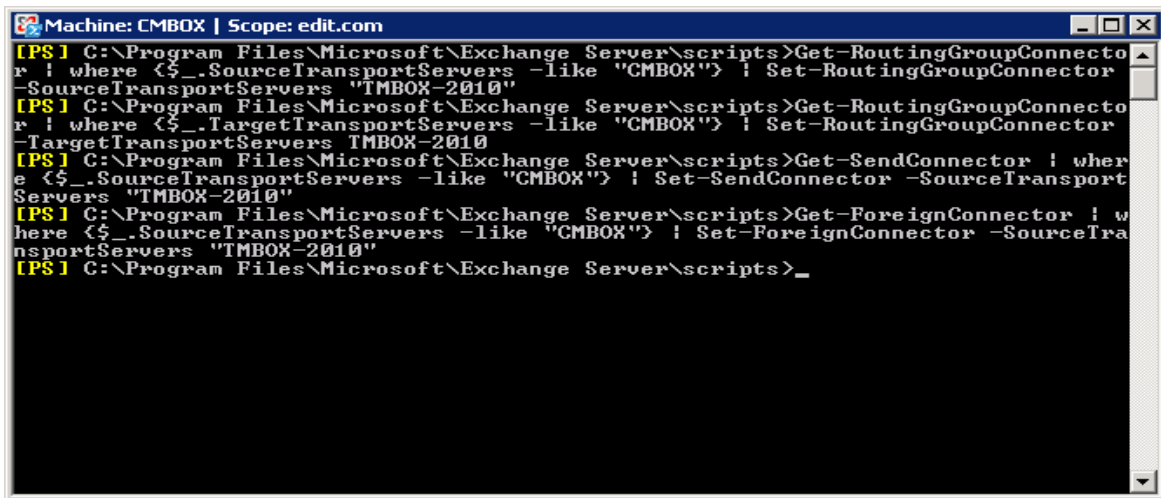
```
Get-RoutingGroupConnector | where {$_.TargetTransportServers -like "<SOURCE EXCHANGE 2007 SERVER>"} | Set-RoutingGroupConnector -TargetTransportServers <TARGET EXCHANGE SERVER>
```

- Execute the following command to modify any Send connectors, which contains the source Exchange 2007 server as the source transport server.

```
Get-SendConnector | where {$_.SourceTransportServers -like "<SOURCE EXCHANGE 2007 SERVER>"} | Set-SendConnector -SourceTransportServers "<TARGET EXCHANGE SERVER>"
```

- Execute the following command to modify any foreign connectors, which contains source Exchange 2007 server as the source transport server.

```
Get-ForeignConnector | where {$_.SourceTransportServers -like "<SOURCE EXCHANGE 2007 SERVER>"} | Set-ForeignConnector -SourceTransportServers "<TARGET EXCHANGE SERVER>"
```



```
Machine: CMBOX | Scope: edit.com
[PS] C:\Program Files\Microsoft\Exchange Server\scripts>Get-RoutingGroupConnector | where {$_.SourceTransportServers -like "CMBOX"} | Set-RoutingGroupConnector -SourceTransportServers "TMBOX-2010"
[PS] C:\Program Files\Microsoft\Exchange Server\scripts>Get-RoutingGroupConnector | where {$_.TargetTransportServers -like "CMBOX"} | Set-RoutingGroupConnector -TargetTransportServers TMBOX-2010
[PS] C:\Program Files\Microsoft\Exchange Server\scripts>Get-SendConnector | where {$_.SourceTransportServers -like "CMBOX"} | Set-SendConnector -SourceTransportServers "TMBOX-2010"
[PS] C:\Program Files\Microsoft\Exchange Server\scripts>Get-ForeignConnector | where {$_.SourceTransportServers -like "CMBOX"} | Set-ForeignConnector -SourceTransportServers "TMBOX-2010"
[PS] C:\Program Files\Microsoft\Exchange Server\scripts>_
```

Figure 27: Moving the Routing Connectors from Exchange Server 2007 to Exchange Server 2010

14. Remove Exchange Administrative Group

NOTE: If you have installed another Exchange Server in the same domain, then these steps are not required, as these steps will also remove the Administrative Group of another Exchange Server.

Even if Exchange Server 2007 is decommissioned, the attributes of Exchange Administrative Group remain in Active Directory. You can use ADSIEdit.MSC console to remove these attributes. Perform the following steps.

- Go to "Start menu" → "Administrative Tools", click "ADSI Edit" to access its console.
- Go to "Actions" menu and click "Connect to." It shows "Connection Settings" dialog box.
- Click "Select a well-known Naming Context" radio button and select "Configuration" in the drop-down menu.

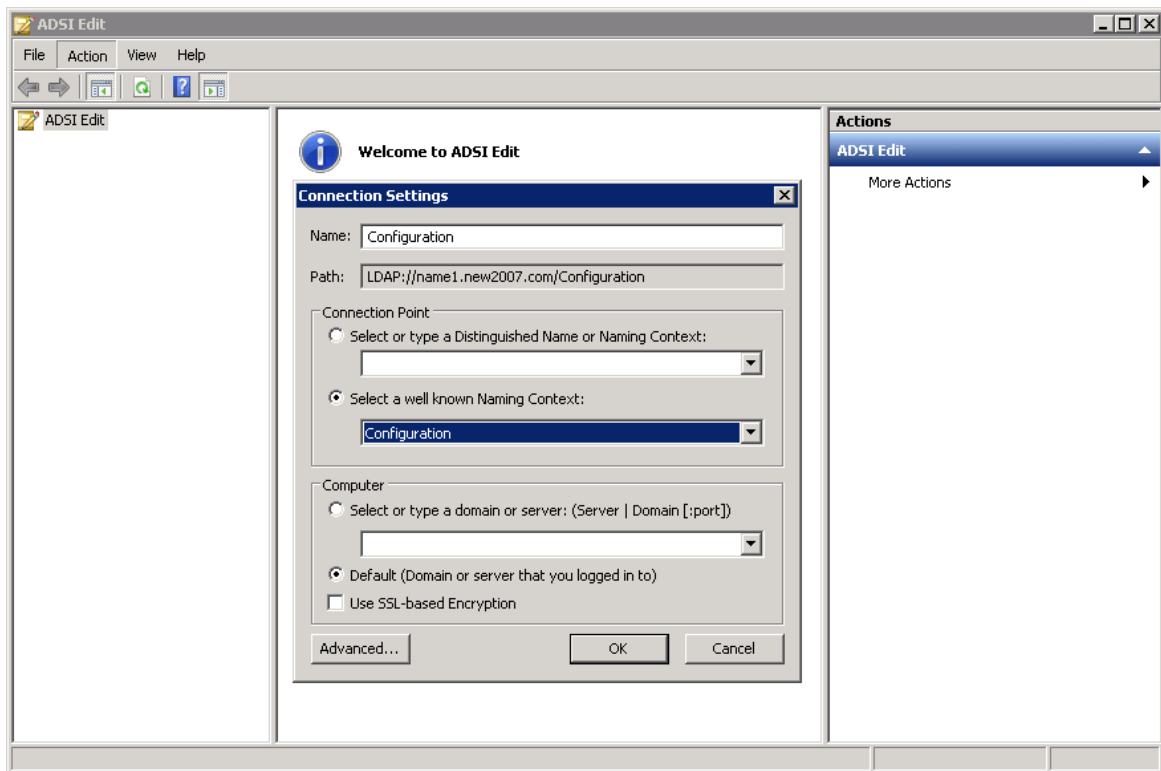


Figure 28: Connecting to a Naming Context in ADSI Edit

4. Click "OK." It connects you to "Configuration" context.
5. In the left panel, go to "CN=Configuration,DC=DOMAIN,DC=COM" → "CN=Services" → "CN=Microsoft Exchange" → "CN=EXCHANGE_ORG" → "CN=Administrative Groups." Expand this node to access "CN=Exchange Administrative Group (FYDIBOHF23SPDLT)."
10. Right-click on "CN=Exchange Administrative Group (FYDIBOHF23SPDLT)" node and select "Delete." It shows a warning message.
11. Click "Yes" to remove the Administrative Group.
12. Close ADSIEdit console.

15. Uninstall Exchange Server 2007

If you have installed Client Access, Unified Messaging, or Hub Transport role at a different computer, then you have to follow these steps at that computer to remove that role.

Once done, you can uninstall Exchange Server 2007 by following these steps:

1. Go to "Start" menu → "Control Panel", click "Programs and Features" to launch its console.
2. Select "Microsoft Exchange Server 2007", and click "Uninstall." The following wizard appears onscreen.



Figure 29: Uninstalling Exchange Server 2007

3. Click "Next" at the welcome page. The next page displays the roles installed on the computer.

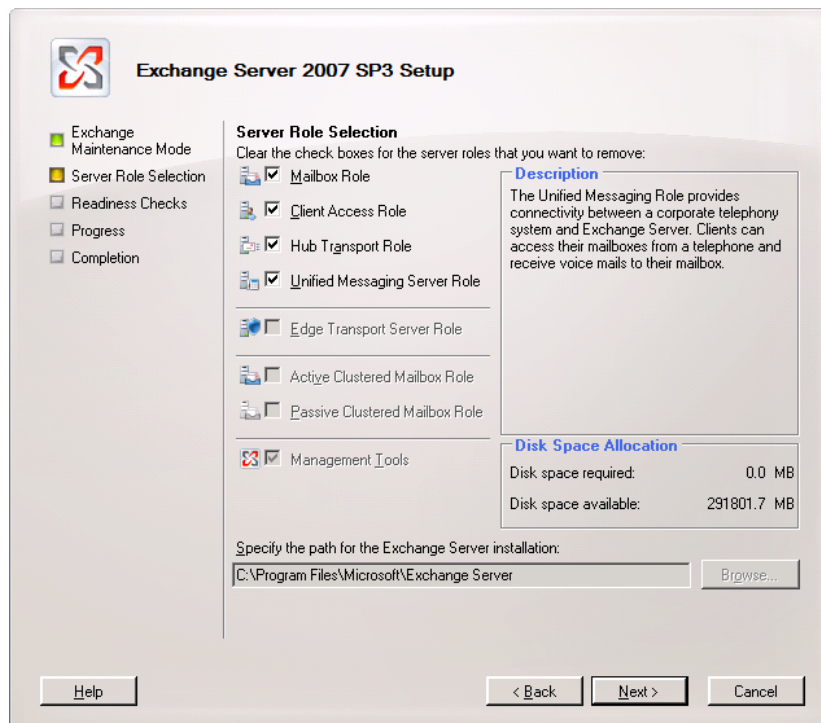


Figure 30: Select the roles to be uninstalled

4. To uninstall Exchange Server 2007, you have to uncheck all roles.

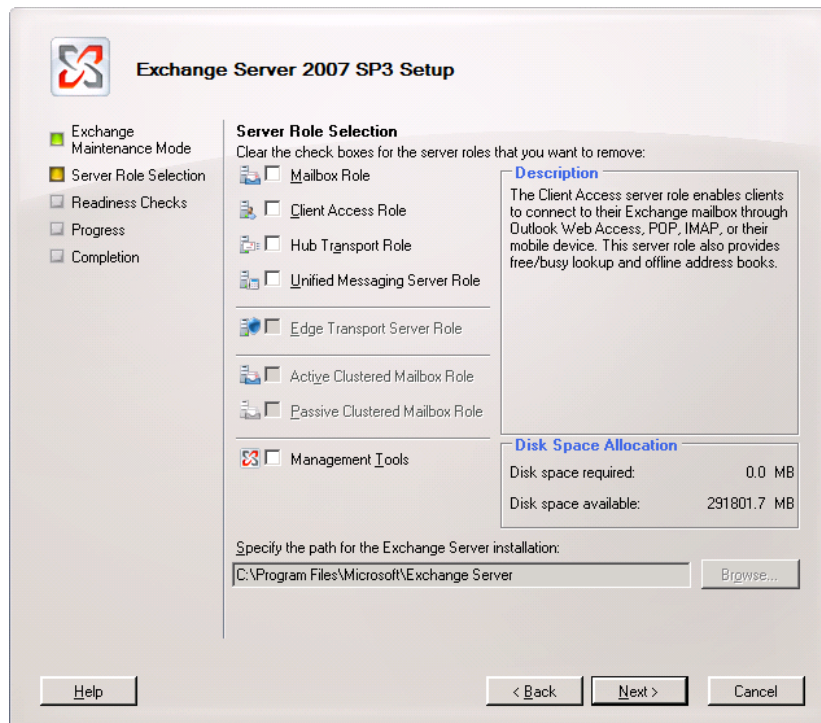


Figure 31: Unchecked all roles

5. Click "Next" to proceed. The setup performs the readiness checks. The message of successful checks or any error in the checks is displayed on the next page of this wizard.

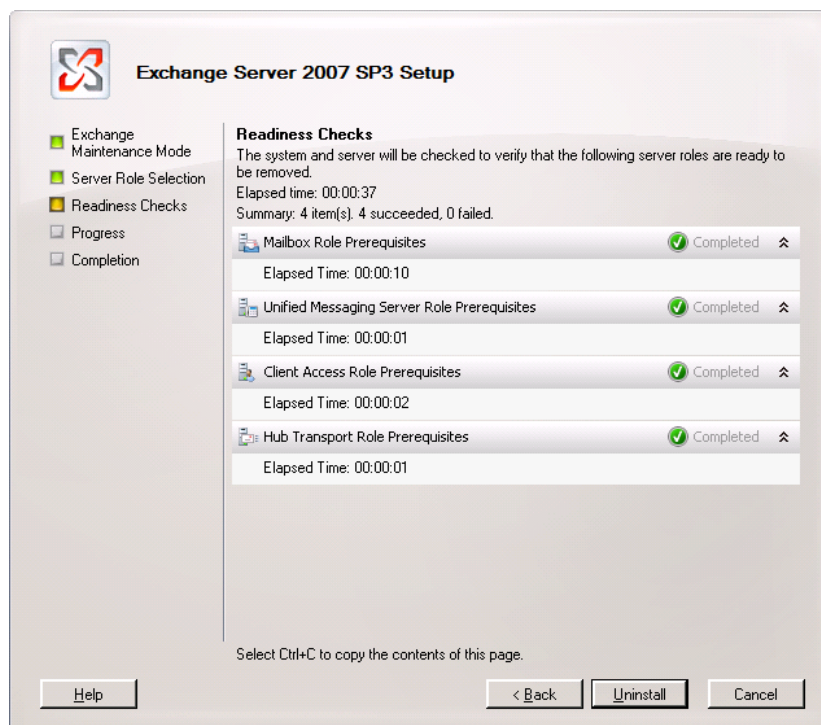


Figure 32: All checks are completed successfully.

6. If all checks are performed successfully, “Uninstall” button appears on the page.
7. Click “Uninstall” to start the uninstallation of Exchange Server.

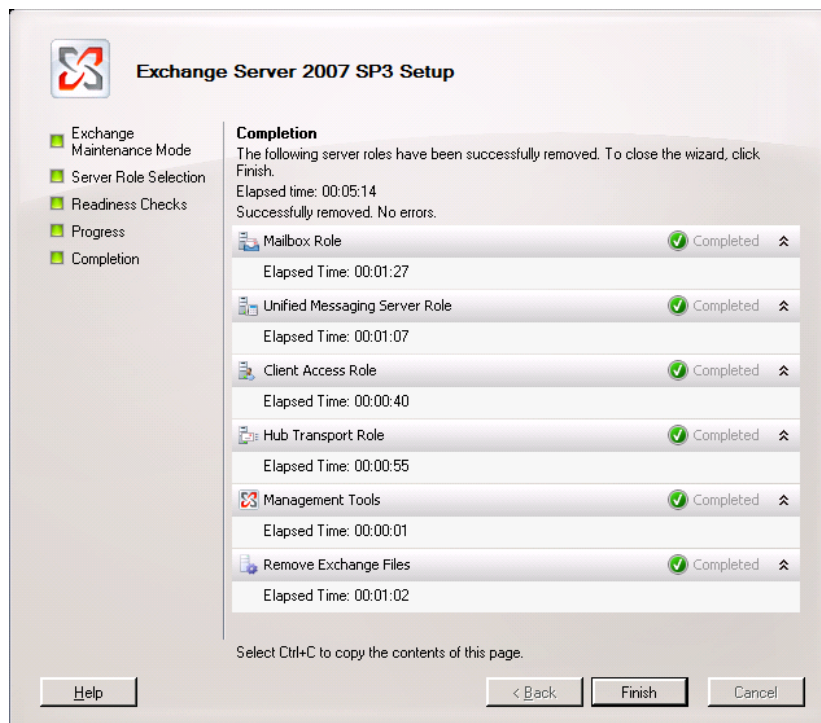


Figure 33: Uninstalled Exchange Server

8. Click “Finish” to complete the process.

15.1 Command to Uninstall Exchange Server 2007 Role

If you are experiencing difficulty uninstalling Exchange Server 2007 or its role from “Programs and Features”, then it is recommended to use the command prompt. You need the installation disc or setup files of Exchange Server 2007 for this process. Perform the following steps:

1. Start the command prompt as an administrator.
2. Once the command prompt is started, switch to the folder or drive containing the setup files of Exchange Server 2007.
3. Execute the following command.

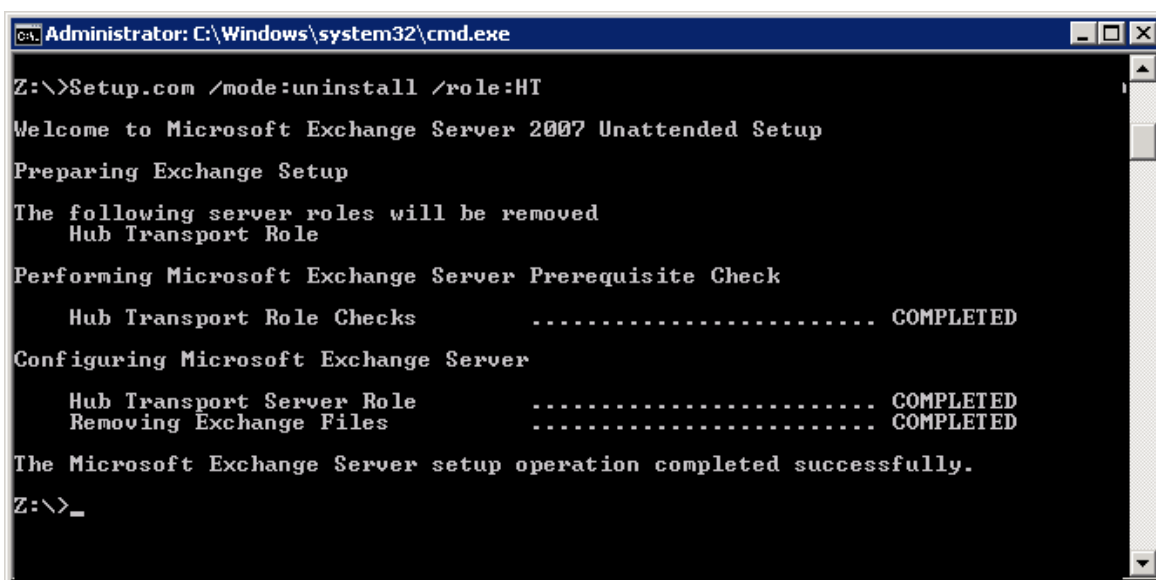
```
setup.com /mode:Uninstall /roles:HT
```

Here, you can use the following annotations for removing the roles. You can enter multiple roles in the above command by separating them with comma.

Annotation	Role
HT or H	Hub Transport Role

CA or C	Client Access Role
ET or E	Edge Transport Role
MB or M	Mailbox Role
UM or U	Unified Messaging
MT or T	Management Tools

Table 1: Annotations to be used in Command to uninstall the Roles



```

Administrator: C:\Windows\system32\cmd.exe
Z:\>Setup.com /mode:uninstall /role:HT
Welcome to Microsoft Exchange Server 2007 Unattended Setup
Preparing Exchange Setup
The following server roles will be removed
  Hub Transport Role
Performing Microsoft Exchange Server Prerequisite Check
  Hub Transport Role Checks ..... COMPLETED
Configuring Microsoft Exchange Server
  Hub Transport Server Role ..... COMPLETED
  Removing Exchange Files ..... COMPLETED
The Microsoft Exchange Server setup operation completed successfully.
Z:\>_

```

Figure 34: Uninstalled Hub Transport Role using Command Prompt

Once the command is completed, the specified role of Exchange Server will be removed from the system.

16. Support

If you are facing any issue while decommissioning the Exchange Server, then you can connect with our team.

Product experts

USA/Canada: +1-866-348-7872

UK/Europe: +44 (0) -808-189-1438

Rest of the World: +91 (0) -981-872-5861

You can also visit <https://www.nucleustechnologies.com/Contact.html> to chat live with our team and to know more about our support team.

You can email your queries at the following addresses.

sales@nucleustechnologies.com for Sales

support@nucleustechnologies.com for Support

17. Copyright

Kernel Migrator for Exchange, any and all components, any and all accompanying software, files, data and materials, this guide, and other documentation are copyright of KernelApps Private Limited, with all rights reserved under the copyright laws. This user guide cannot be reproduced in any form without the prior written permission of KernelApps Private Limited. No Patent Liability is assumed, however, on the use of the information contained herein.

© KernelApps Private Limited, All Rights Reserved.

18. Warranty Disclaimers and Liability Limitations

This document and other documents by KernelApps Private Limited are distributed and provided AS IS and with no warranties of any kind, whether expressed or implied. In particular, there is no warranty for any harm, destruction, impairment caused to the system where these are installed. You acknowledge that good data processing procedure dictates that any program, listed above, must be thoroughly tested with non-critical data before there is any reliance on it, and you hereby assume the entire risk of all use of the copies of this document covered by this License. This disclaimer of warranty constitutes an essential part of this License.

In no event does KernelApps Private Limited authorize you or anyone else to use the steps mentioned in this document in applications or systems where the failure to perform can reasonably be expected to result in a significant physical injury, or in loss of life. Any such use is entirely at your own risk, and you agree to hold KernelApps Private Limited harmless from any and all claims or losses relating to such unauthorized use.

19. Trademarks

Kernel Migrator for Exchange is the registered trademark of KernelApps Private Limited.

All other brand names, product names, logos, registered marks, service marks and trademarks (except above of KernelApps Private Limited.) appearing in this document are the sole property of their respective owners. These are purely used for informational purposes only. We have compiled a list of such trademarks, but it may be possible that a few of them are not listed here.

Windows Server®, Windows®, Exchange Server 2003®, Exchange Server 2007®, and Active Directory®, are registered trademarks of Microsoft Corporation.