



Kernel for PDF to Word

Convert PDF files to MS Word DOC format

PRODUCT GUIDE

Table of Contents

| | | |
|-----|--|----|
| 1. | About Kernel for PDF to Word..... | 4 |
| 1.1 | Using this Manual..... | 4 |
| 1.2 | Kernel for PDF to Word | 5 |
| 1.4 | Who Should Use this Software?..... | 6 |
| 2. | Getting Started | 7 |
| 2.1 | Installation Pre-requisites..... | 7 |
| 2.2 | Downloading Kernel for PDF to Word for the First Time..... | 8 |
| 2.3 | Install Kernel for PDF to Word..... | 8 |
| 2.4 | Start Kernel for PDF to Word | 8 |
| 2.5 | Uninstall Kernel for PDF to Word..... | 9 |
| 3. | Software Interface | 10 |
| 3.1 | Welcome Screen..... | 10 |
| 3.2 | Buttons Used | 11 |
| 4. | Convert PDF to Word..... | 12 |
| 5. | Full Version | 21 |
| 5.1 | Requirement of Full Version..... | 21 |
| 5.2 | Purchasing Full Version..... | 21 |
| 6. | Support | 22 |
| 7. | Troubleshooting | 23 |
| 7.1 | Common Issues | 23 |
| 7.2 | Frequently Asked Questions | 23 |
| 8. | Legal Notices | 24 |
| 8.1 | Copyright | 24 |
| 8.2 | Trademark | 24 |
| 8.3 | Disclaimer | 24 |
| 8.4 | License Agreement | 24 |

Table of Figures

Figure 3.1: Welcome Screen of Kernel for PDF to Word10

Figure 3.2: Buttons Used.....11

Figure 4.1: Main Window12

Figure 4.2: Select Files for Conversion.....13

Figure 4.3: Selected File14

Figure 4.4: Browse Folder for Output Location15

Figure 4.5: Output Location16

Figure 4.6: Parameters for Conversion17

Figure 4.7: Enter Password18

Figure 4.8: Conversion in Progress.....19

Figure 4.9: Link of Converted File Location.....20



1. About Kernel for PDF to Word

Welcome to the user manual for Kernel for PDF to Word software, the most efficient and user-friendly file conversion software that helps in converting PDF documents to Word format. This software can not only convert textual data into Word format, but can also convert images, OLE objects, tables, graphs, hyperlinks and other type of data from PDF to Word file format with full accuracy.

1.1 Using this Manual

This user manual is intended to guide System Administrators – novice and/or experienced with complete working of Kernel for PDF to Word software. We suggest that first time users should read this user manual completely and carefully before proceeding to use the software. However, if you are an experienced user, you can use the table of contents to find out information pertaining to the tasks that you need to perform by using Kernel for PDF to Word. You can use the table of contents to navigate through different sections of this user manual. The table of contents lists all the contained sections in a chronological order. This user manual comprises the following sections:

- Introduction
- Getting Started
- Software Interface
- Converting PDF to Word
- Full Version
- Support
- Troubleshooting
- Legal Notice

Certain acronyms have been used throughout this manual. For clear understanding of the contents of this user manual, please go through the list mentioned below, before reading the manual.

1.1.1 List of Abbreviations

PDF: Portable Document Format

DOC: Word Document Files

OLE: Object Linking and Embedding



MS: Microsoft

RAM: Random Access Memory

MB: Mega-Byte

GB: Giga-Byte

1.2 Kernel for PDF to Word

Kernel for PDF to Word is an outstanding utility that can be used to convert PDF files to Doc file format. Converting PDF files to Word file format helps users to edit and copy content, delete or extract pages, change layouts, fill form fields and print PDF Documents. Since PDF file format is non-editable and secured against data access, converting them to Word format facilitates making desired changes to the document.

PDF files are also protected with encryption passwords and are imposed with local restrictions, which make it difficult for users to access their data freely. With the help of Kernel for PDF to Word software users can access data present in PDF files with encryption passwords and local restrictions. Upon conversion, the data is open for modification not only for document authors but for all other users.

Kernel for PDF to Word allows users to effortlessly convert multiple PDF files to Word file format within seconds. This tool allows conversion of up to 50 PDF files in a single conversion cycle. If the password is known, users can also open password protected PDF files and convert them to DOC format. This software is capable of carrying out conversions of a selected "Page Range". Furthermore, it also allows users to "Enable/Disable Display of Graphics" in the converted Word files.

Kernel for PDF to Word tool supports Unicode character conversion due to which special characters preset in the file body or file name can be accurately converted. Data integrity is preserved upon conversion and the original formats, internal structure and properties of the PDF files are kept unchanged. PDF files with textual data, images, graphics, hyperlinks, tables, OLE objects, forms, etc can be flawlessly converted to Word format. Kernel for PDF to Word supports PDF files created using all versions of Adobe Acrobat and is compatible with MS Word version 2000 and above.

1.3 Salient Features

Kernel for PDF to Word is a highly efficient and user friendly software with different integrated features to help you convert PDF files to Word file format with ease.

Following are the salient features of this software:

- Supports quick and accurate PDF to Word Conversion

- Facilitates multiple conversion (up to 50 PDF files) in a single conversion cycle
- Recovers data, OLE objects, images, forms, graphs, hyperlinks, tables and other information from PDF files in their original format
- Preserve data structure, formatting and properties of content
- Supports Unicode Character Conversion
- Allows you convert password-protected PDF files to Word
- Integrated with options such as “Define Page Order” and “Enable/Disable display of graphics”
- Interactive GUI for hassle-free PDF to Word conversion
- Supports all versions of MS Word including 2010, 2007, 2003, 2002 and 2000
- Supports all versions of Windows OS such as Windows Server 2008, Windows 7, Windows Vista, Windows XP, Windows 2003 and Windows 2000
- Available with free evaluation version
- Comes with 30 day money back guarantee

1.4 Who Should Use this Software?

The ability of Kernel for PDF to Word to successfully convert PDF files to Word file format makes the software ideal for system administrators, content authors and technical writers who are required to perform file conversions. This PDF to Word conversion software makes the process of converting large number of PDF files to DOC format fast and simple.

Kernel for PDF to Word is also useful for individuals who need to manage and share their PDF documents in Word format, since the later provides various editing and formatting options. Upon converting files from PDF to Word, users can freely access the data and make modifications to the document, which is otherwise difficult with PDF file format.

2. Getting Started

Now that you have understood the features and potential of Kernel for PDF to Word, you are ready to get hands on experience of the software. To start the process of PDF to Word conversion, first of all you will need to download and install the software. However it is strongly recommended that before installing Kernel for PDF to Word, you should go through the installation pre-requisites of the software and ensure that your system is properly configured to run the tool.

2.1 Installation Pre-requisites

The various pre-requisites for installing and running Kernel for PDF to Word can be broadly classified into two major categories – Hardware requirements and Software requirements.

2.1.1 Hardware Requirements:

The hardware requirements for installing the software are as follows:

- Pentium Class Processor
- Minimum 64 MB RAM (128 MB recommended)
- 10 MB for Software installation
- Windows 2000/2003/XP/Vista/7/2008 Server
- Disk Space - Enough space to store the converted files

2.1.2 Software Requirements:

The software requirements for installing the software can further be grouped into two categories – Operating system requirements and Open Office version requirements. The requirements are as follows:

2.1.2.1 Operating System Requirements

Supported operating systems:

- Windows 2008 Server
- Windows 7
- Windows Vista
- Windows XP

- Windows 2003
- Windows 2000

2.1.2.2 MS Office Versions Requirements

Supported MS Word versions:

- MS Word 2010
- MS Word 2007
- MS Word 2003
- MS Word 2002
- MS Word 2000

2.2 Downloading Kernel for PDF to Word for the First Time

After checking your computer with the prescribed system requirements for Kernel for PDF to Word, you can download and install the software on your computer. You can buy the full version of the software from any one of our authorized resellers– Element5, Asknet and 2CO.

If you want to try using Kernel for PDF to Word before buying it, you can download the evaluation version from the following link:

<http://www.nucleustechnologies.com/downloadkernelpdfword.html>

Using the free evaluation version of Kernel for PDF to Word software, you can efficiently convert PDF files to Word format. However, the limitation with the demo version is that only the first three pages of your PDF documents will get converted to DOC format instead of the entire document.

2.3 Install Kernel for PDF to Word

After downloading the installer file for Kernel for PDF to Word, you can install the software by running the file.

After you have downloaded the installer file, execute the following steps to install the software:

1. Double-click the **Kernel for PDF to Word software** installer file.
2. Follow the on-screen instructions. When the installation process completes “Completing the Kernel for PDF to Word Setup Wizard” message appears on the software installation screen.
3. Click the **Finish** button to complete the software installation and launch the software.

2.4 Start Kernel for PDF to Word



To start Kernel for PDF to Word:

Click the **Start → All Programs → Kernel for PDF to Word**

Alternatively, you can launch Kernel for PDF to Word by double-clicking the shortcut icon available on the desktop and Quick Launch icon.

2.5 Uninstall Kernel for PDF to Word

You may need to uninstall and re-install Kernel for PDF to Word. You can uninstall Kernel for PDF to Word in two different ways:


Uninstall from the Windows Start menu

To uninstall Kernel for PDF to Word from Windows Start menu:

1. Click the **Start → All Programs → Kernel for PDF to Word → Uninstall Kernel for PDF to Word**

A warning message will be displayed.

2. Click **Yes** to uninstall Kernel for PDF to Word.

 Before proceeding to uninstall Kernel for PDF to Word, you must ensure that the software is not running.

Uninstall from Control Panel

You can alternatively uninstall Kernel for PDF to Word from the **Control Panel** by performing the following steps:

1. Click the **Start Menu → Control Panel** and then double click the **Add or Remove Programs** icon.

2. Select **Kernel for PDF to Word** and click **Remove**.

A warning message will be displayed.

3. Click **Yes** to uninstall Kernel for PDF to Word.

3. Software Interface

Now that Kernel for PDF to Word has been installed on your computer, you can start using the software after getting acquainted with the software interface.

3.1 Welcome Screen

Following is the main screen you will come across after first launching Kernel for PDF to Word

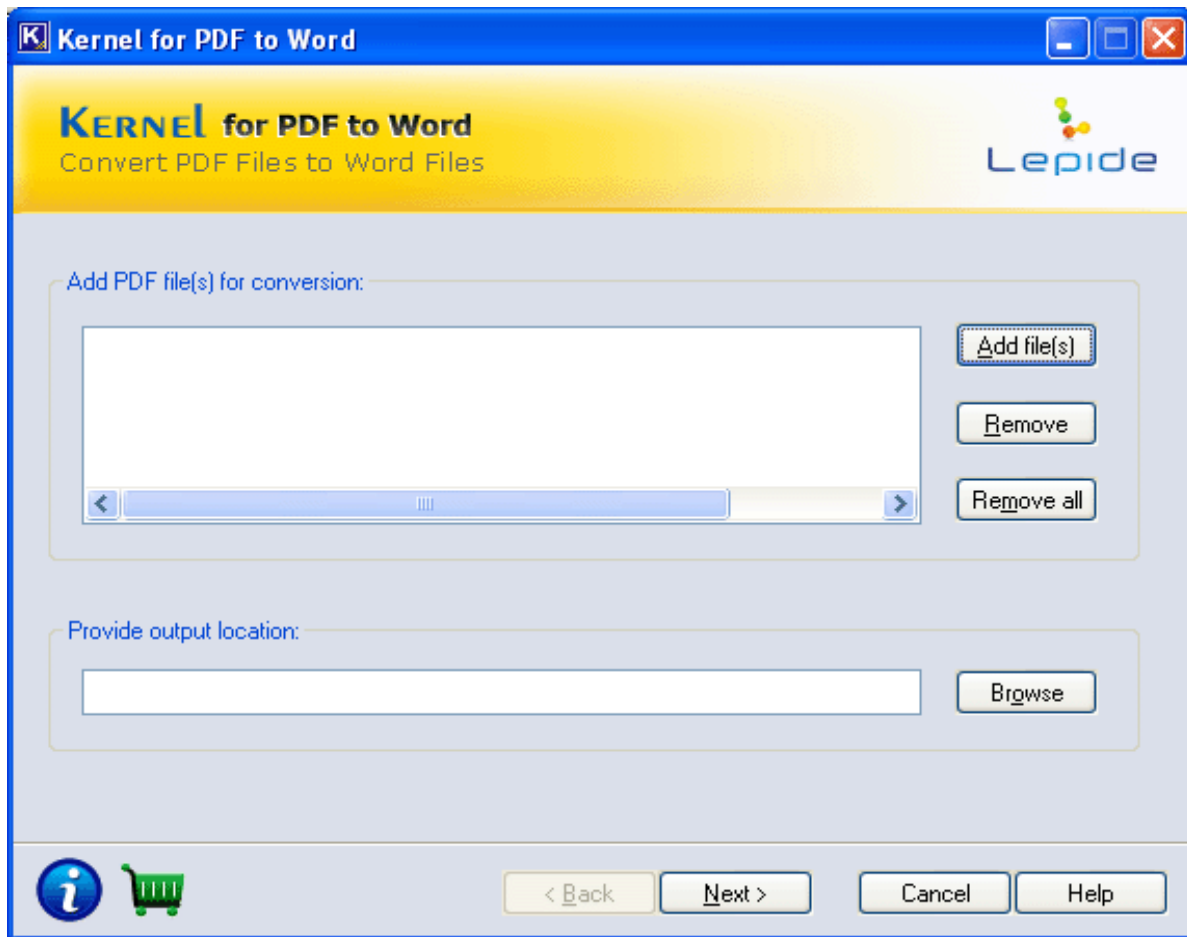


Figure 3.1: Welcome Screen of Kernel for PDF to Word

3.2 Buttons Used

Given below is the list of buttons required to use Kernel for PDF to Word during the course of converting PDF files to Word documents:

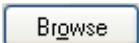
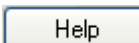
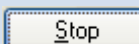
| Button | Button Description |
|---|---|
|  | Adds file(s) to list for PDF to Word conversion |
|  | Removes file(s) from list of selected PDF files for conversion |
|  | Removes all the file(s) from the list of PDF files for conversion |
|  | Browns the folder for saving the output files after conversion |
|  | Takes you to the next window |
|  | Takes you back to the previous window |
|  | Closes the Kernel for PDF to Word |
|  | Opens Software's help manual |
|  | Stops the PDF to Word conversion process |
|  | Finishes the PDF to Word conversion process |

Figure 3.2: Buttons Used

4. Convert PDF to Word

Now that you have complete familiarity of the user interface of Kernel for PDF to Word, you are ready to convert PDF files to Word format. Follow these steps to convert PDF documents to DOC:

1. Launch Kernel for PDF to Word:

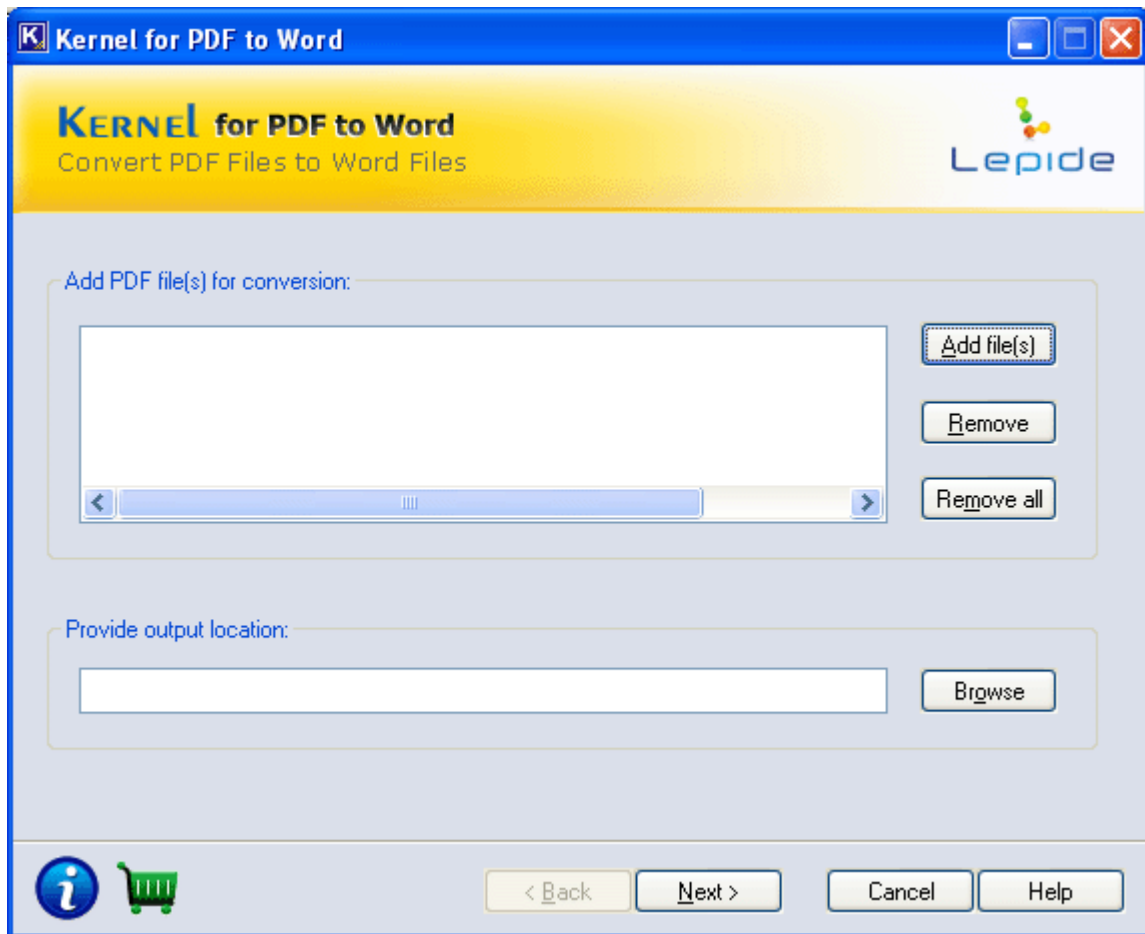


Figure 4.1: Main Window

2. Click the **Add File(s)** button to list the PDF files you want to convert to Word (.doc) file format. The "Add PDF file(s) (max 50 files)" dialog box will appear:

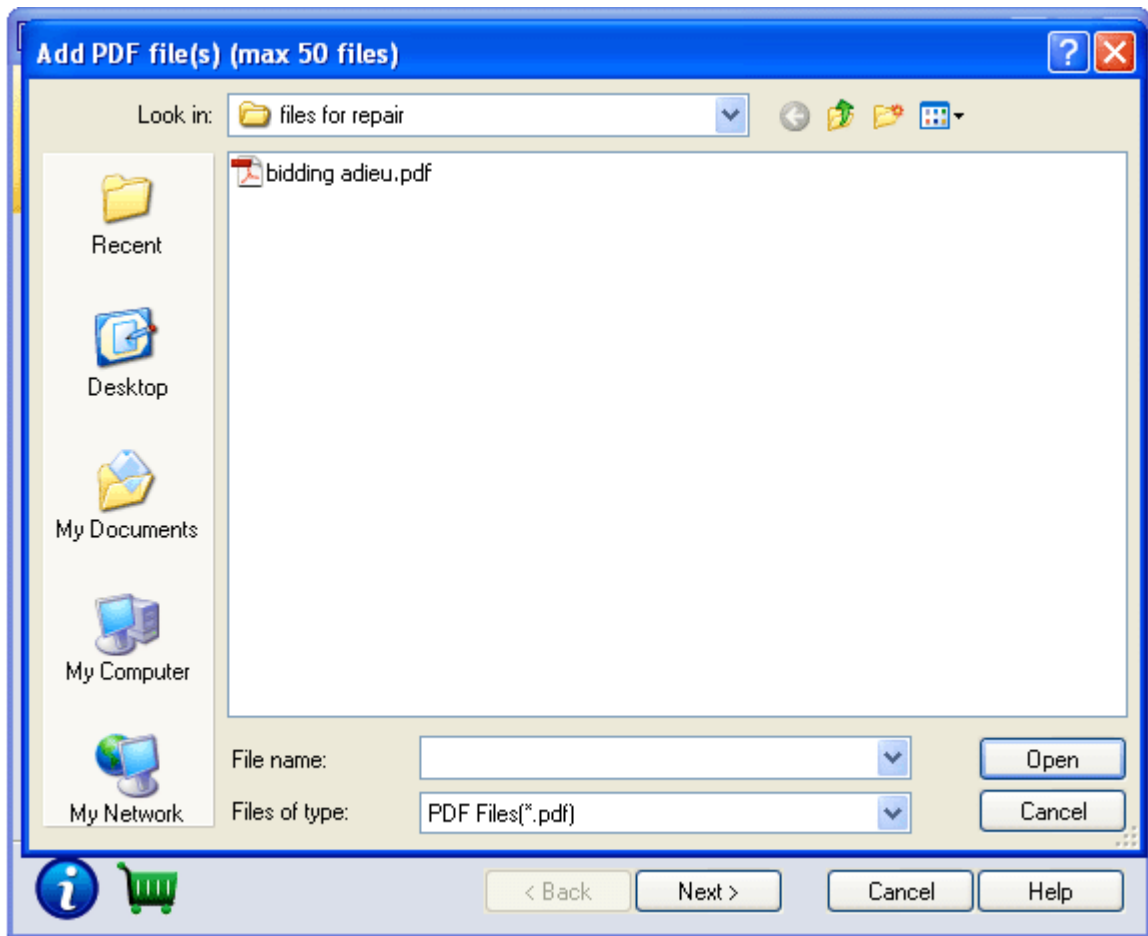


Figure 4.2: Select Files for Conversion

3. Select all the files to convert and click the **Open** button. List of selected file(s) will be displayed in the dialog box:

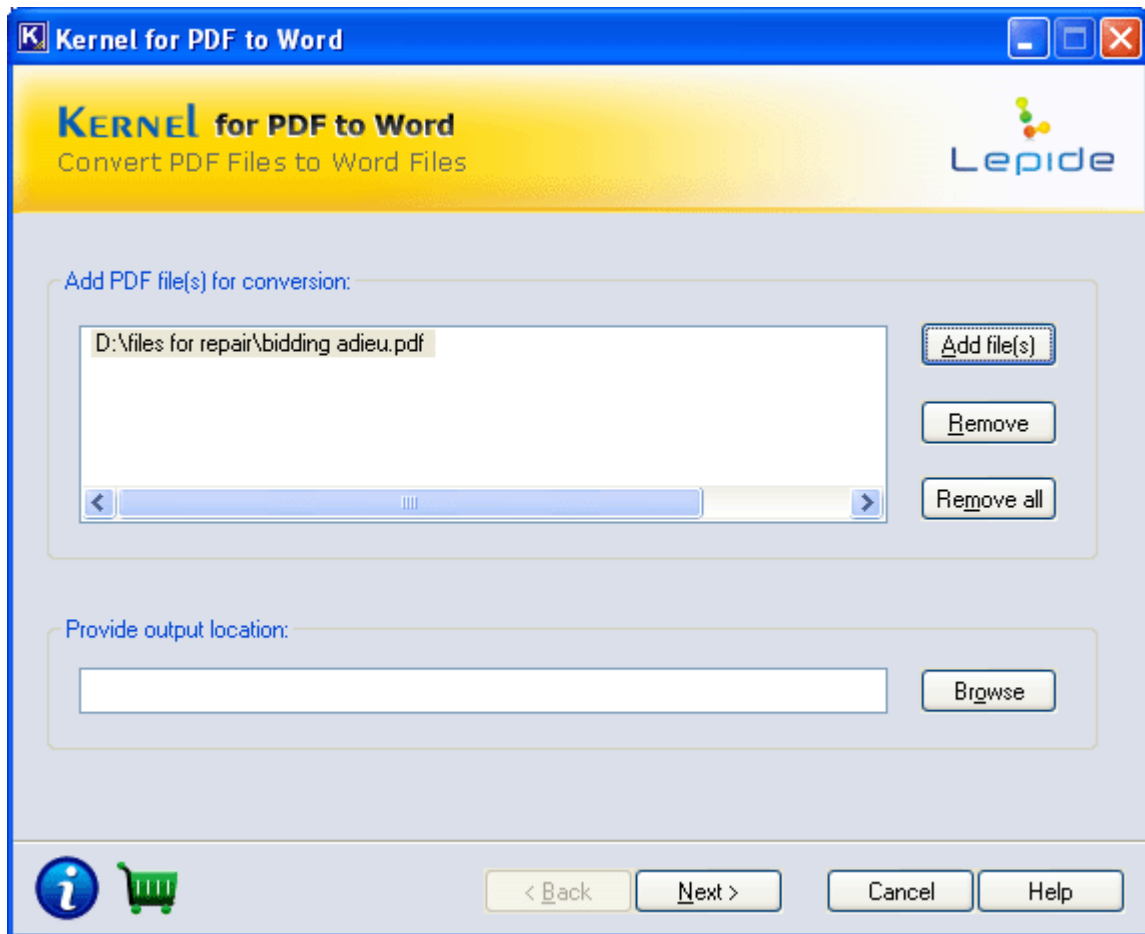


Figure 4.3: Selected File

4. Click the **Browse** button to select the location where you want to save the resultant file. The “**Browse for Folder**” dialog box will appear:



Figure 4.4: Browse Folder for Output Location

5. Specify the location to save the converted Word file(s) and then click **OK**. The following screen will appear:

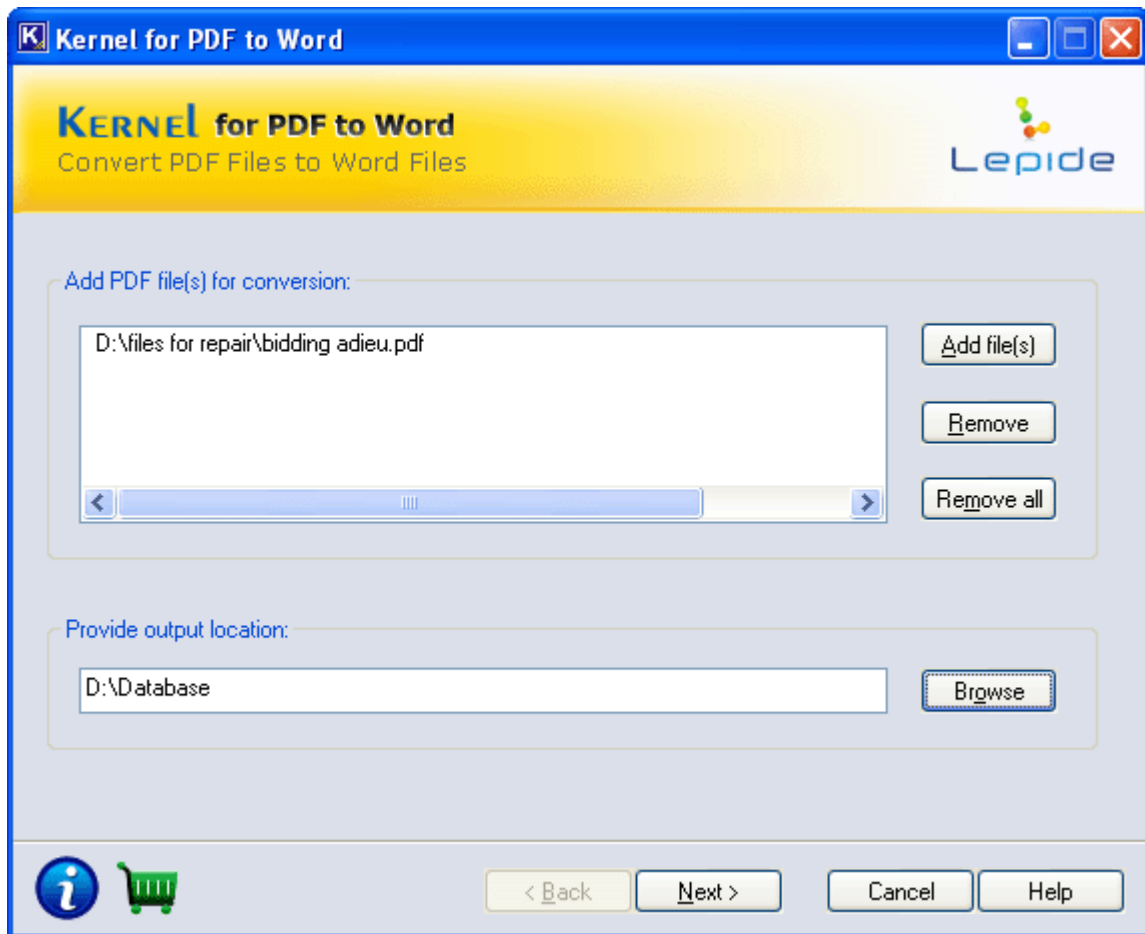


Figure 4.5: Output Location

6. Click the **Next** button to proceed to the next step. The following dialog box will then appear:

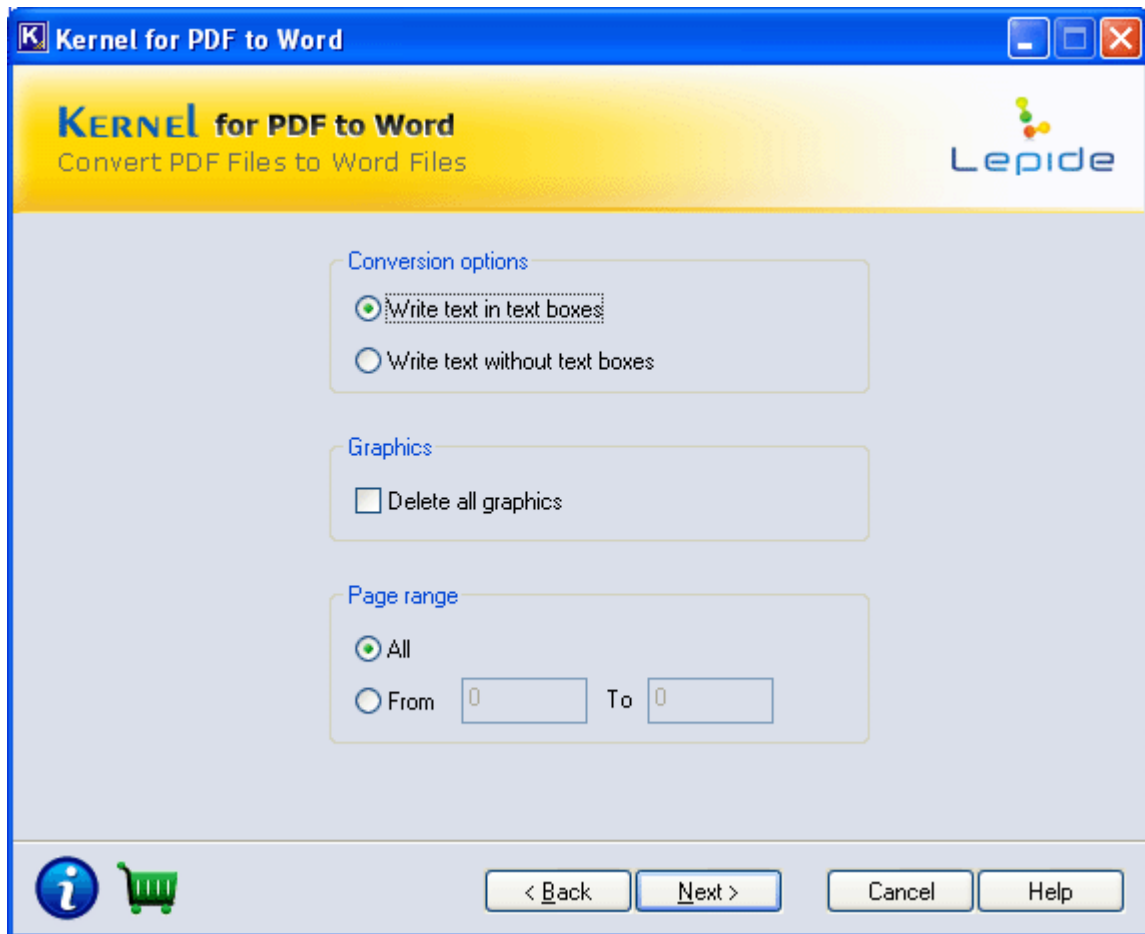


Figure 4.6: Parameters for Conversion

Select the required option from this page. Following are the options available to optimize the conversion process:

Conversion options:

- **Write text in text boxes**- Select this option to save the text in boxes in the converted Word file
- **Write text without text boxes**- Select this option to save the text without text boxes

Graphics:

Select **Delete all graphics** if you do not want the graphics to be included in the resultant Word files.

Page Range:

Under **Page Range**, click **All** to convert the entire PDF document to DOC format or enter page numbers in **From** and **To** fields to specify a page range.

7. Click the **Next** button to continue. The following screen will appear if the PDF file is password protected:

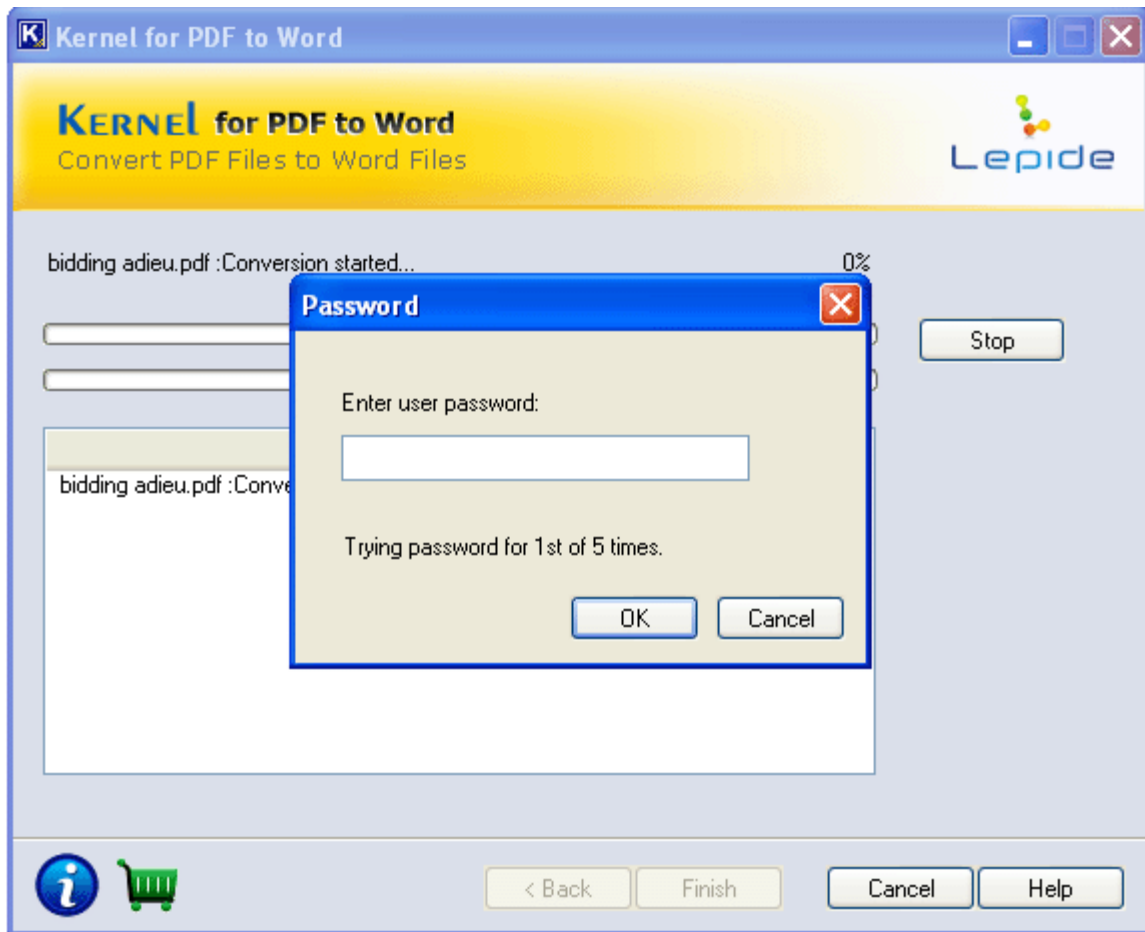


Figure 4.7: Enter Password

Kernel for PDF to Word will prompt you to **Enter user password** if the PDF file is encrypted. You can try to enter a valid password for a maximum of 5 times. If a wrong password is entered on 5 consecutive attempts, the software will restrict the conversion from PDF to Word.

8. Click the **Next** button to initiate the PDF to Word conversion process:

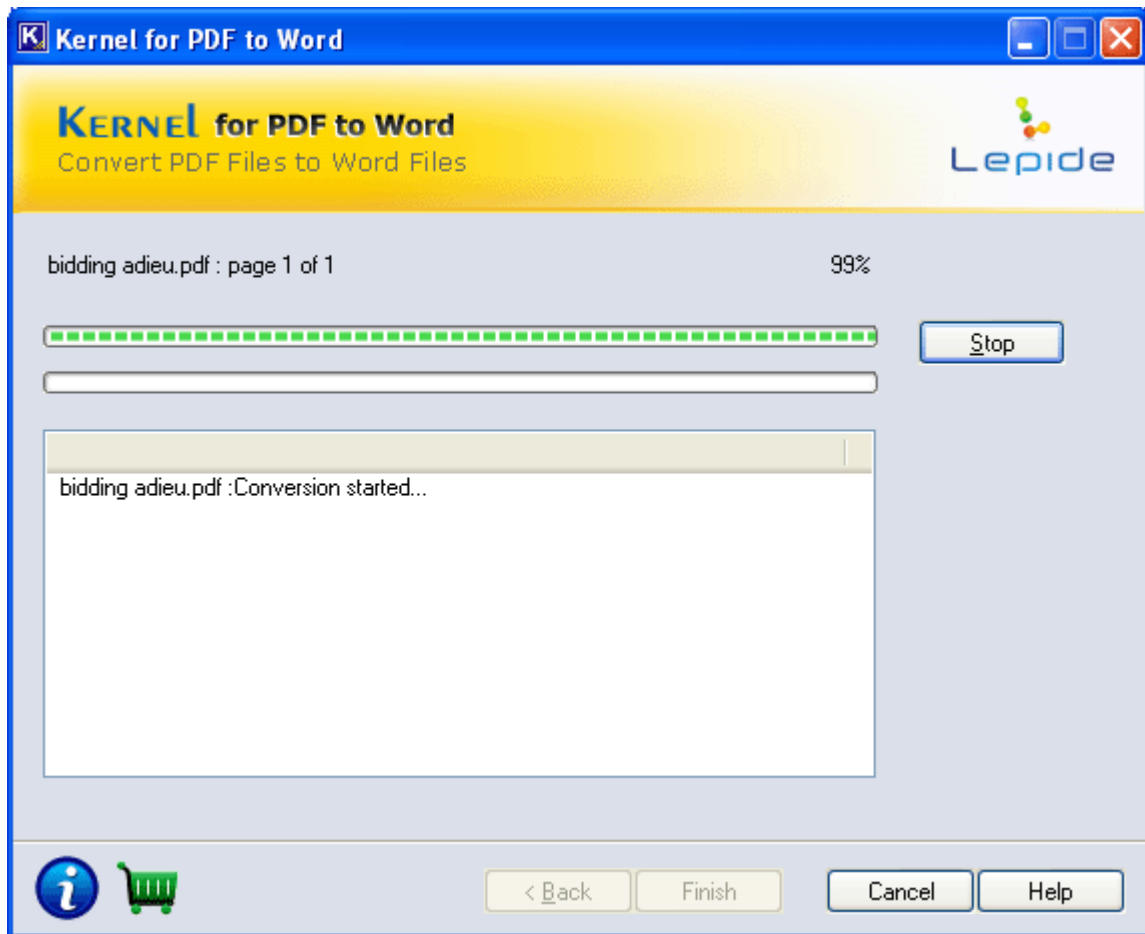


Figure 4.8: Conversion in Progress

After converting the files, Kernel for PDF to Word displays the following dialog box with the link of the location where the converted Word file(s) is saved.

9. You can open the Word file by clicking the **File(s) location** link from the dialog box:

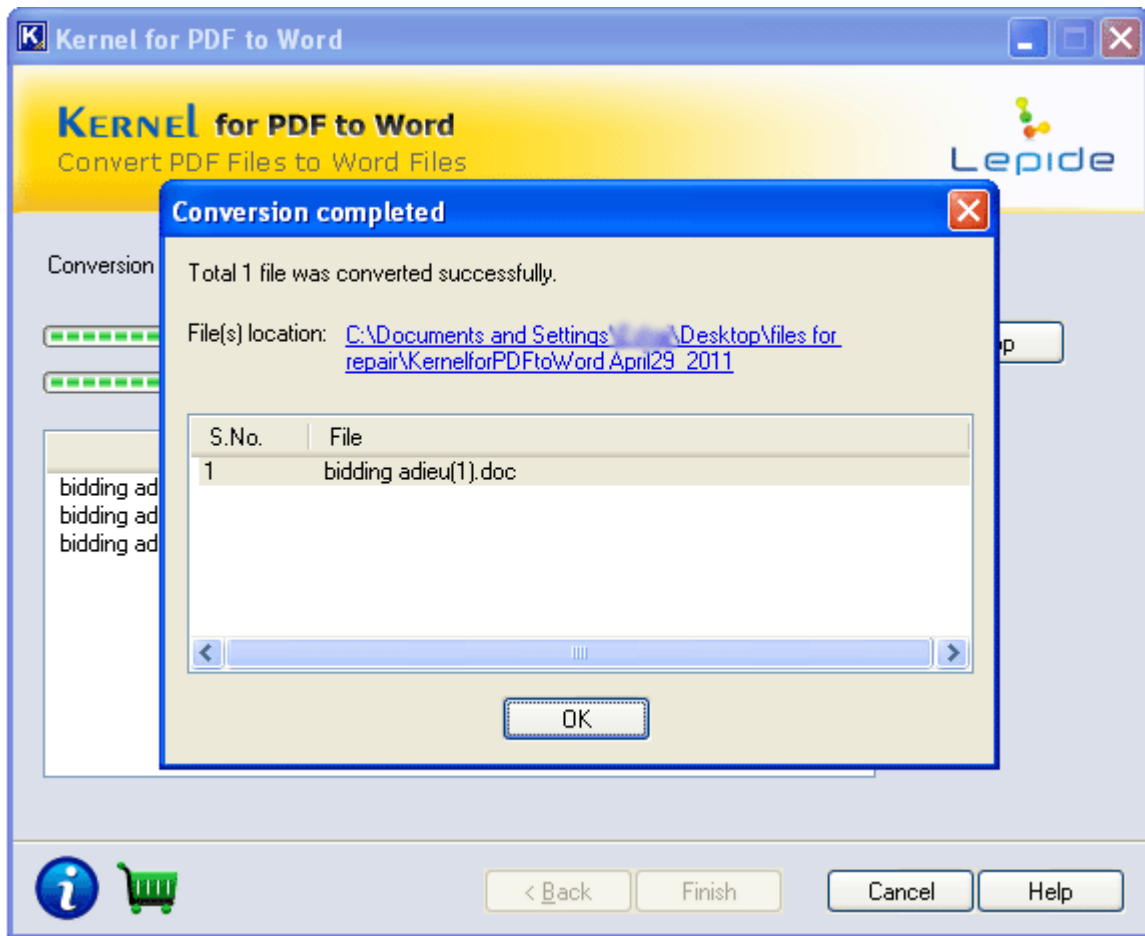


Figure 4.9: Link of Converted File Location

Click **OK** and then **Finish** to exit from the software setup.

This way, using Kernel for PDF to Word, you can convert up to 50 PDF files to Word file format in a single conversion cycle.

5. Full Version

Although you can use Kernel for PDF to Word evaluation version for free and experience the capabilities of the software, there are certain features that are not available in this evaluation version.

5.1 Requirement of Full Version

By using the evaluation version of Kernel for PDF to Word, you can effortlessly convert PDF files to Word file format in no time. The free demo version of this software works similar to the full version and converts up to 50 PDF files to Word format accurately. However, there is one limitation in the free trial version of Kernel for PDF to Word that only the first three pages of each PDF document is converted to DOC format and not the entire file.

You will need to buy the full version of the software in order to convert the full PDF files into Word files.

5.2 Purchasing Full Version

You can buy the full version of Kernel for PDF to Word from any one of our authorized resellers – Element5, Asknet and 2CO.

As soon the purchase transaction with our resellers gets completed, our sales team will send you an email comprising the URL to download the full version of Kernel for PDF to Word and activation details of the software.

6. Support

We have an extensive and efficient support system in place to assist our customers with all issues related to using Kernel for PDF to Word. The software comes with an embedded help manual that can be accessed by clicking **Help→Software Help** in the menu-bar. You can also press the F1 key on the keyboard of your computer to access the embedded help of Kernel for PDF to Word.

You can access the online help for Kernel for PDF to Word at:

<http://www.nucleustechnologies.com/Online-Helps.html>

View Animated Working demo of the software at:

<http://www.nucleustechnologies.com/animated-demo-pdf-to-word.html>

We also have live support wherein you can chat with our software experts at:

<http://www.nucleustechnologies.com/Support.html>

To talk on phone with our software experts call:

Help line:

+91-9818725861

1-866-348-7872 (Toll Free for USA/CANADA)

You can also email us about your queries at;

sales@nucleustechnologies.com for Sales

support@nucleustechnologies.com for Support

contact@nucleustechnologies.com for General Queries

7. Troubleshooting

This section deals with your generic and specific queries pertaining to using Kernel for PDF to Word.

7.1 Common Issues

Why does Kernel for PDF to Word have limitations in evaluation copy?

The free evaluation version of Kernel for PDF to Word is intended to make you familiar with the features and working of the software and how the resultant files look after the conversion process. You are required to purchase the full version of the software to convert all the pages of the PDF files to Word format.

7.2 Frequently Asked Questions

How to Buy Kernel for PDF to Word?

You can buy Kernel for PDF to Word online at <http://www.nucleustechnologies.com/Buy-Data-Recovery-Software.html>.

I have lost my full version for Kernel for PDF to Word. Can you help me?

Please email us at sales@nucleustechnologies.com. Please include your name, address, email address and order confirmation number (if you have it). We will be happy to help you.

How can I upgrade the software?

To upgrade the software you have to send an email to sales@nucleustechnologies.com. Please include your name, address, email address, order confirmation number and the name of the software upgraded to.

Would I get an invoice for my purchase?

Yes, we provide every customer with a soft copy of the invoice. This is sent on the same day, on the provided email.

8. Legal Notices

This section comprises the legal specification about Kernel for PDF to Word and the company LEPIDE SOFTWARE PRIVATE LIMITED

8.1 Copyright

LEPIDE SOFTWARE PRIVATE LIMITED, Kernel for PDF to Word accompanied user manual and documentation are copyright of LEPIDE SOFTWARE PRIVATE LIMITED, with all rights reserved. Under the copyright laws, this user manual cannot be reproduced in any form without the prior written permission of LEPIDE SOFTWARE PRIVATE LIMITED. No Patent Liability is assumed, however, with respect to the use of the information contained herein.

© LEPIDE SOFTWARE PRIVATE LIMITED. All rights reserved.

8.2 Trademark

Kernel for PDF to Word ® is a copyright work of LEPIDE SOFTWARE PRIVATE LIMITED

Windows 95®, Windows 98®, Windows ME®, Windows NT®, Windows 2000 Server®, Windows 2000 Advanced Server®, Windows 2003 Server®, Windows XP®, Windows Vista, MS-DOS and Open Office are registered trademarks of Microsoft Corporation and Sun Microsystems, Inc.

All other brand and product names are trademarks or registered trademarks of their respective companies.

8.3 Disclaimer

The Information contained in this manual, including but not limited to any product specifications, is subject to change without notice. LEPIDE SOFTWARE PRIVATE LIMITED provides no warranty with regard to this manual or any other information contained herein and here by expressly disclaims any implied warranties of merchantability or fitness for any particular purpose with regard to any of the foregoing LEPIDE SOFTWARE PRIVATE LIMITED assumes no liability for any damages incurred directly or indirectly from any technical or typographical errors or omissions contained herein or for discrepancies between the product and the manual. In no event shall LEPIDE SOFTWARE PRIVATE LIMITED, be liable for any incidental, consequential special, or exemplary damages, whether based on tort, contract or otherwise, arising out of or in connection with this manual or any other information contained herein or the use there of.

8.4 License Agreement

Kernel for PDF to Word Copyright © by LEPIDE SOFTWARE PRIVATE LIMITED

Your Agreement to this License

You should carefully read the following terms and conditions before using, installing or distributing this software, unless you have a different license agreement signed by LEPIDE SOFTWARE PRIVATE LIMITED. The terms and conditions of this License describe the permitted use and users of each Licensed Copy of Kernel for PDF to Word. For purposes of this License, if you have a valid license, you have the right to use a single Licensed Copy of Kernel for PDF to Word.

Scope of License

Each Licensed Copy of Kernel for PDF to Word may either be used by a single person or used non-simultaneously by multiple people who use the software personally installed on a single workstation. All rights of any kind in Kernel for PDF to Word, which are not expressly granted in this License, are entirely and exclusively reserved to and by LEPIDE SOFTWARE PRIVATE LIMITED. You may not rent, lease, modify, translate, reverse engineer, decompile, disassemble, or create derivative works based on, Kernel for PDF to Word, nor permit anyone else to do so. You may not make access to Kernel for PDF to Word available to others in connection with a service bureau, application service provider, or similar business, nor permit anyone else to do so.

Warranty Disclaimers and Liability Limitations

Kernel for PDF to Word, and any and all accompanying software, files, data and materials, are distributed and provided AS IS and with no warranties of any kind, whether expressed or implied. In particular, there is no warranty for the quality of data recovered. You acknowledge that good data processing procedure dictates that any program, including Kernel for PDF to Word, must be thoroughly tested with non-critical data before there is any reliance on it, and you hereby assume the entire risk of all use of the copies of Kernel for PDF to Word covered by this License. This disclaimer of warranty constitutes an essential part of this License. In addition, in no event does LEPIDE SOFTWARE PRIVATE LIMITED authorize you or anyone else to use Kernel for PDF to Word in applications or systems where Kernel for PDF to Word failure to perform can reasonably be expected to result in a significant physical injury, or in loss of life. Any such use is entirely at your own risk, and you agree to hold LEPIDE SOFTWARE PRIVATE LIMITED harmless from any and all claims or losses relating to such unauthorized use.

General

This License is the complete statement of the agreement between the parties on the subject matter, and merges and supersedes all other or prior understandings, purchase orders, agreements and arrangements. This License shall be governed by the laws of the State of Delhi. Exclusive jurisdiction and venue for all matters relating to this License shall be in courts and for a located in the State of Delhi, and you consent to such jurisdiction and venue. There are no third party beneficiaries of any promises, obligations or representations made by LEPIDE SOFTWARE PRIVATE LIMITED herein.

Any waiver by LEPIDE SOFTWARE PRIVATE LIMITED of any violation of this License by you shall not constitute, nor contribute to, a waiver by LEPIDE SOFTWARE PRIVATE LIMITED of any other or future violation of the same provision, or any other provision, of this License.