



Kernel for Novell GroupWise to Lotus Notes

Migrate Novell GroupWise to Lotus Notes Seamlessly

PRODUCT GUIDE

Table of Contents

1. Kernel for Novell GroupWise to Lotus Notes	5
1.1 Using this Manual.....	5
1.2 Introducing Kernel for Novell GroupWise to Lotus Notes	6
2. Getting Started	8
2.1 Installation Pre-requisites.....	8
2.2 Downloading Kernel for Novell GroupWise to Lotus Notes	9
2.3 Install Kernel for Novell GroupWise to Lotus Notes	9
3.1 Start Kernel for Novell GroupWise to Lotus Notes	10
3.2 Uninstall Kernel for Novell GroupWise to Lotus Notes.....	10
4. Software Interface	11
4.1 Kernel for Novell GroupWise to Lotus Notes.....	11
4.2 Kernel for Novell GroupWise to Lotus Notes Batch Migration File Creator	13
5. Migrating from Novell GroupWise to Lotus Notes	18
5.1 Single Mailbox Migration.....	18
5.2 Multiple Mailbox Migration.....	34
6. Advanced Options to ease Migration	51
7. Full Version	53
7.1 Requirement of Full Version.....	53
7.2 Purchasing Full Version.....	53
8. Support	54
9. Legal Notices	55
9.1 Copyright	55
9.2 Trademark	55
9.3 Disclaimer	55
9.4 License Agreement.....	55

Table of Figures

Figure 4.1: File Menu.....	11
Figure 4.2: Tool Menu	12
Figure 4.3: Help Menu	12
Figure 4.4: File menu of Batch Migration File Creator	14
Figure 4.5: Edit menu for Batch Migration File Creator.....	14
Figure 4.6: View menu for Batch Migration File Creator.....	15
Figure 4.7: Help menu for Batch Migration File Creator.....	15
Figure 5.1: Main Window of Kernel for Novell GroupWise to Lotus Notes.....	18
Figure 5.2: Window showing three modes.....	19
Figure 5.3: Using Default Mode.....	20
Figure 5.4: Enlisted Folders from Novell GroupWise mailbox.....	21
Figure 5.5: Preview Window.....	22
Figure 5.6: Export Options for saving converted data	23
Figure 5.7: Saving Process	24
Figure 5.8: Saving Complete.....	25
Figure 5.9: Using Online Mode.....	26
Figure 5.10: Entering Authentication details for Online Mode.....	27
Figure 5.11: Preview Window.....	28
Figure 5.12: Using Caching Mailbox path.....	29
Figure 5.13: Using Remote Mailbox path.....	31
Figure 5.14: Using Command Line Mode.....	33
Figure 5.15: Welcome Screen of Batch file creator tool.....	35
Figure 5.16: GroupWise Information Dialog	36
Figure 5.17: Defining NSF file location for saving the converted data	38
Figure 5.18: Enlisted Mailbox records.....	39
Figure 5.19: Saving the .CONLN file	40
Figure 5.20: Excel sheet format.....	41
Figure 5.21: Excel file with details	44
Figure 5.22: Batch file creator software.....	45

Figure 5.23: Fetching Excel File..... 46

Figure: 5.24: Listing of Mailboxes 47

Figure 5.25: Main Window 48

Figure 5.26: Opening CONLN file 49

Figure 5.27: CONLN file listed 50

Figure 5.28: Advance Options dialog 51

Figure 5.29: Folder Selection dialog..... 52

Figure 5.30: Add Folder dialog 53

1. Kernel for Novell GroupWise to Lotus Notes

Welcome to the user manual of Kernel for Novell GroupWise to Lotus Notes, the most effective convenient Novell GroupWise to Lotus Notes conversion software available online for migrating data from Novell GroupWise mailboxes to Lotus Notes. This software provides a secure migration to MS Exchange Server so that users can migrate Single GroupWise Mailbox or Unlimited GroupWise Mailboxes at once. This user manual consists of step by step guidelines on using this software to perform flawless migration.

1.1 Using this Manual

The user manual of Kernel for Novell GroupWise to Lotus Notes is devised to help the users perform accurate Novell GroupWise to Lotus Notes migration. It is suggested that the novice users should go through this user manual carefully before proceeding to use the software. If you are an experienced user, use the TOC to find out information related to tasks that you wish to perform using Kernel for Novell GroupWise to Lotus Notes. You can use the table of contents to navigate through various sections of this user manual. The table of contents comprises of all the sections in the user manual in chronological order. The user manual comprises the following sections:

- Introduction
- Getting Started
- Software Interface
- Migrating from Novell GroupWise to Lotus Notes
- Advance Options to Ease Migration
- Full Version
- Support
- Troubleshooting
- Legal Notice

Certain abbreviations have been used throughout this manual. For clear understanding of the contents of this user manual, please go through the list of abbreviations, mentioned below, before reading the manual.

1.1.1 List of Abbreviations

XLS: Excel Sheet Extension

RAM: Random Access Memory

MB: Mega-Byte

GB: Giga-Byte

1.2 Introducing Kernel for Novell GroupWise to Lotus Notes

Kernel for Novell GroupWise to Lotus Notes is reliable and powerful software devised especially to perform seamless and precise migration of data in Novell GroupWise mailboxes to NSF file format. Converting the data to NSF file format eases the user to access GroupWise email data with Lotus Notes email client. This is an eminent tool that performs accurate migration and allows you to convert all the data in your GroupWise mailbox to NSF file format. After GroupWise to Lotus Notes conversion, the NSF file is ready to be accessed with Lotus Notes.

Novell GroupWise to Lotus Notes migration tool allows you to perform flawless migration in matter of three simple steps: Select, Export and Save. The software creates a new Notes Storage File (NSF) with the same folder structure of Novell GroupWise mailbox. Using this tool, you can migrate email messages, calendar entries, tasks, contacts etc for a pre-defined or specified time period at a desired location.

1.3 Salient Features

Salient features of Kernel for Novell GroupWise to Lotus Notes include:

- Convert single GroupWise Mailbox to Lotus Notes Mailbox
- Convert Unlimited GroupWise Mailboxes to Lotus Notes
- Supports UNICODE characters for conversion
- Facilitates migrating either all or selected mailbox folders to Lotus Notes
- Displays preview of GroupWise mailbox items before converting them into Lotus Notes mailbox
- Supports exporting archived GroupWise mailbox to Lotus Notes
- Exports emails, contacts, tasks, calendar, and other GroupWise mailbox items to Lotus Notes
- Enables users to migrate Address Book
- Lets you save data in text format
- Self-descriptive graphical user interface
- Supports every version
- Available with free evaluation version

2. Getting Started

Now that you have understood the features and potential of Kernel for Novell GroupWise to Lotus Notes, you are ready to experience the working of the software. In order to migrate from Novell GroupWise environment to Lotus Note environment, you need to download and install this software. However, it is strongly recommended that before you install Kernel for Novell GroupWise to Lotus Notes, you must check the installation pre-requisites for the software to ensure that your computer is apt for running the software.


2.1 Installation Pre-requisites

The various pre-requisites for installing and running Kernel for Novell GroupWise to Lotus Notes can be broadly classified into two major categories – Hardware requirements and Software requirements.

2.1.1 Hardware Requirements:

The hardware requirements for installing the software are as follows:

- Pentium class processor
- 512 MB RAM
- 13 MB for Software installation
- Disk Space - Enough space to save the results

 You should have at-least 13 MB of free disk space if you want to convert and save 13 MB email data.

2.1.2 Software Requirements:

The software requirements for installing the software are as follows:

2.1.2.1 Operating System Requirements

Supported operating systems:


- Windows 7
- Windows Vista
- Windows XP
- Windows 2003
- Windows 2000

2.1.2.2 Email Client Requirements

Supported Novell GroupWise Server Versions- Supports all versions of Novell GroupWise including 4.1 to 8.0

Supported Lotus Notes Versions- Supports all versions of Lotus Notes including 1.0 to 8.5

Supported MS Excel Versions- Supports all versions of MS Excel 97, 98, 2000, 2002 and 2003


 Lotus Notes and Novell GroupWise client should be installed on the computer system on which you are performing the conversion. You cannot convert mailboxes if both the above mentioned applications are not installed on the host computer. Also, you need to have MS Excel installed on your computer for creating Excel database for batch file migration.

2.2 Downloading Kernel for Novell GroupWise to Lotus Notes

After checking your computer with the prescribed system requirements for Kernel for Novell GroupWise to Lotus Notes, you can download and install the software on your computer. You can buy the full version of the software from any one of our authorized resellers– Element5, Asknet and 2CO.


If you want to try using Kernel for Novell GroupWise to Lotus Notes before buying it, you can download the evaluation version from the following link:

<http://www.nucleustechologies.com/download-groupwisetonotes.html>

 Using the evaluation version of Kernel for Novell GroupWise to Lotus Notes, you can convert all the data from GroupWise mailbox to Lotus Notes but can save only 10 email items per folder.

2.3 Install Kernel for Novell GroupWise to Lotus Notes

After downloading the installer file for Kernel for Novell GroupWise to Lotus Notes, you can install the software by running the file.

 Before installing the software make sure that the host computer meets the entire system requirements and has sufficient memory available.

To install Kernel for Novell GroupWise to Lotus Notes:

1. Double-click the Kernel for Novell GroupWise to Lotus Notes installer.
2. Follow the on-screen instructions.

The **Setup Installation Complete** screen will be displayed.

3. Click **Finish**, the main window of the Kernel for Novell GroupWise to Lotus Notes software will be launched.

3.1 Start Kernel for Novell GroupWise to Lotus Notes

To start Kernel for Novell GroupWise to Lotus Notes:

Click the **Start → All Programs → Kernel for Novell GroupWise to Lotus Notes → Kernel for Novell GroupWise to Lotus Notes**

Alternatively, you can launch Kernel for Novell GroupWise to Lotus Notes by double-clicking the shortcut icon available on the desktop and Quick Launch icon.

3.2 Uninstall Kernel for Novell GroupWise to Lotus Notes


You may need to uninstall and re-install Kernel for Novell GroupWise to Lotus Notes.

To uninstall Kernel for Novell GroupWise to Lotus Notes:

1. Click the **Start → All Programs → Kernel for Novell GroupWise to Lotus Notes → Uninstall Kernel for Novell GroupWise to Lotus Notes**

A warning message will be displayed.

2. Click **Yes** to uninstall Kernel for Novell GroupWise to Lotus Notes.

 Before proceeding to uninstall Kernel for Novell GroupWise to Lotus Notes, you must ensure that the software is not running.

You can alternatively uninstall Kernel for Novell GroupWise to Lotus Notes from the **Control Panel** by performing the following steps:

1. Click the **Start Menu → Control Panel** and then double click the **Add or Remove Programs** icon.
2. Select **Kernel for Novell GroupWise to Lotus Notes** and click **Remove**.

A warning message will be displayed.

3. Click **Yes** to uninstall Kernel for Novell GroupWise to Lotus Notes.

4. Software Interface

Now that Kernel for Novell GroupWise to Lotus Notes has been installed on your computer, you can start using the software after getting acquainted with the software interface.

4.1 Kernel for Novell GroupWise to Lotus Notes

Kernel for Novell GroupWise to Lotus Notes software allows you to perform Novell GroupWise to Lotus Notes migration with the help of two migration options: Single Mailbox Migration and Batch file Migration. Have a close look at the software interface:

4.1.1 Menu Bar

The menu-bar of Kernel for Novell GroupWise to Lotus Notes comprises three main menus – File, Tool, and Help.

4.1.1.1. File Menu

The **File** menu comprises four menu items.

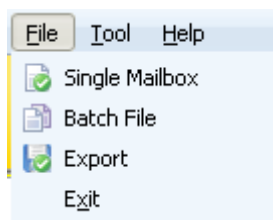


Figure 4.1: File Menu

Menu items in the **File** menu:

Field Name	Field Description
Single Mailbox	Select this option to convert Single GroupWise User mailbox
Batch File	Select this option to convert Multiple GroupWise user mailboxes saved in a batch file
Export	Select this option to export/save items of the mailbox
Exit	Select to close the software

4.1.1.2. Tool Menu

The **Tool** menu comprises a single menu item.

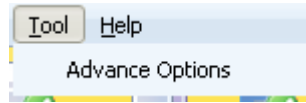


Figure 4.2: Tool Menu

Menu Item in the Tool menu:

Field Name	Field Description
Advanced Options	Select this option to view advanced options to customize various activities. Enable or disable the appropriate checkbox field as per your requirement

4.1.1.3. Help Menu

The **Help** menu comprises three menu items.

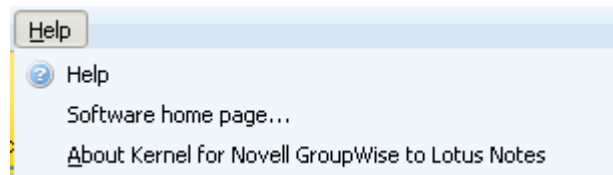






Figure 4.3: Help Menu

Menu items in the Help menu:

Field Name	Field Description
Help	Select to view help information pertaining to performing various tasks using Kernel for Novell GroupWise to Lotus Notes.
Software Homepage...	Select to visit software homepage on our website
About Kernel for Novell GroupWise to Lotus Notes	Select to view version-related and support information of Kernel for Novell GroupWise to Lotus Notes

4.1.2 Tool Bar

The tool-bar in Kernel for Novell GroupWise to Lotus Notes is displayed below the menu-bar. Tool bar is displayed just below the menu-bar in the software interface. It offers a convenient method for performing varied functions that are otherwise performed by using the Menu Bar. Following are buttons available in the tool bar along with their respective use:

Button	Button Name	Button Description
	Single Mailbox	Click this button to convert Single GroupWise User mailbox
	Batch File	Click this button to convert Multiple GroupWise user mailboxes saved in a batch file
	Export	Click this button to export/save items of the mailbox
	Help	Click this button to view Users Help manual of Kernel for Novell GroupWise to Lotus Notes software

4.2 Kernel for Novell GroupWise to Lotus Notes Batch Migration File Creator

As the batch file creation tool - Kernel for Novell GroupWise to Lotus Notes Batch Migration File Creator has been installed automatically on your computer system along with the installation of Kernel for Novell GroupWise to Lotus Notes software; you can start creating batch file to perform multiple mailboxes migration after getting acquainted with the software interface of batch migration file creator tool.

4.2.1 Menu Bar

Mentioned below are the menu bar items used in Kernel for Novell GroupWise to Lotus Notes Batch Migration File Creator software:

4.2.1.1 Help Menu

The File menu has six menu items: New File, Add Record, Open, Save, Save As and Exit to help users in performing functions described below:

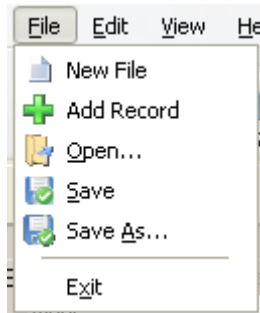


Figure 4.4: File menu of Batch Migration File Creator

Field Name	Field Description
New File	Select this option to remove the existing CONLN files enlisted in the Kernel for Novell GroupWise to Lotus Notes Batch Migration File Creator software and create new record for a new batch file
Add Record	Select this option to add new record of the user mailbox in a batch file
Open	Select this option to open an existing .CONLN batch file
Save	Select this option to save the .CONLN batch file
Save As	Select this option to select the location on your hard drive to save the .CONLN batch file
Exit	Select this option to exit from the software

4.2.1.2. Edit Menu

Edit Menu has Remove option to help user perform following function:



Figure 4.5: Edit menu for Batch Migration File Creator

Field Name	Field Description
Remove	Select this option to remove the selected record from the list

4.2.1.3. View Menu

View Menu has two menu items including Toolbars and Status Bar to help the users perform following functions:

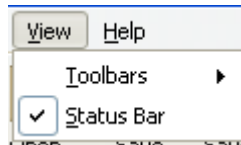


Figure 4.6: View menu for Batch Migration File Creator

Field Name	Field Description
Toolbars	Select this option to view or hide toolbar of Kernel for Novell GroupWise to Lotus Notes Batch Migration File Creator software
Status Bar	Select this option to view or hide status Bar of Kernel for Novell GroupWise to Lotus Notes Batch Migration File Creator software

4.2.1.4. Help Menu

The Help Menu has three menu items: Help, Software Home Page and About Kernel for Novell GroupWise to Lotus Notes Migration File Creator:

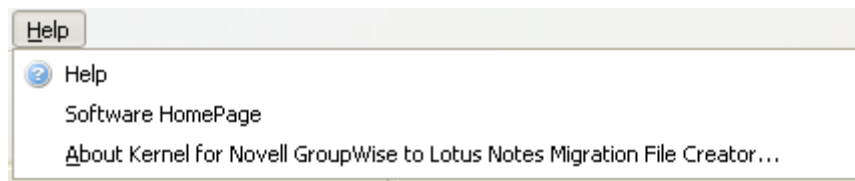
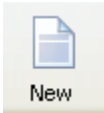
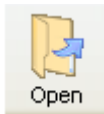
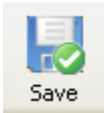



Figure 4.7: Help menu for Batch Migration File Creator

Field Name	Field Description
Help	Select to view help information pertaining to performing various tasks using Kernel for Novell GroupWise to Lotus Notes Batch Migration File Creator
Software Homepage...	Select to visit software homepage on our website
About Kernel for Novell GroupWise to Lotus Notes Migration File Creator	Select to view version-related and support information of Kernel for Novell GroupWise to Lotus Notes Batch Migration File Creator

4.2.2 Tool Bar

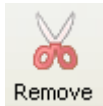
Tool bar is displayed just below the menu-bar in the software interface. It offers a convenient method for performing varied functions that are otherwise performed by using the Menu Bar. Following are buttons available in the tool bar along with their respective use:

Button	Button Name	Button Description
	New	Click this button to remove all existing records listed in the Kernel for Novell GroupWise to Lotus Notes Batch Migration File Creator software and create new record for a new batch file
	Open	Allows you to open the existing .CONLN file
	Save	Allows you to save the .CONLN batch file
	Save As	Allows you to define the location on your hard drive to save the .CONLN file



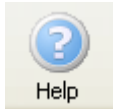
Add Record

Allows you to add the records/details of the GroupWise user mailbox



Remove

Enables you to remove the selected record from the list



Help

Enables you to view User's Help Manual of Kernel for Novell GroupWise to Lotus Notes Batch Migration File Creator software



Import Excel

Allows you to import excel worksheet with added information about the batch of GroupWise mailbox(s) to be migrated

5. Migrating from Novell GroupWise to Lotus Notes

Notes

Now that you have complete familiarity of the user interface of Kernel for Novell GroupWise to Lotus Notes, you are ready to perform the migration of GroupWise mailbox(s).

5.1 Single Mailbox Migration

1. Launch Kernel for Novell GroupWise to Lotus Notes software:

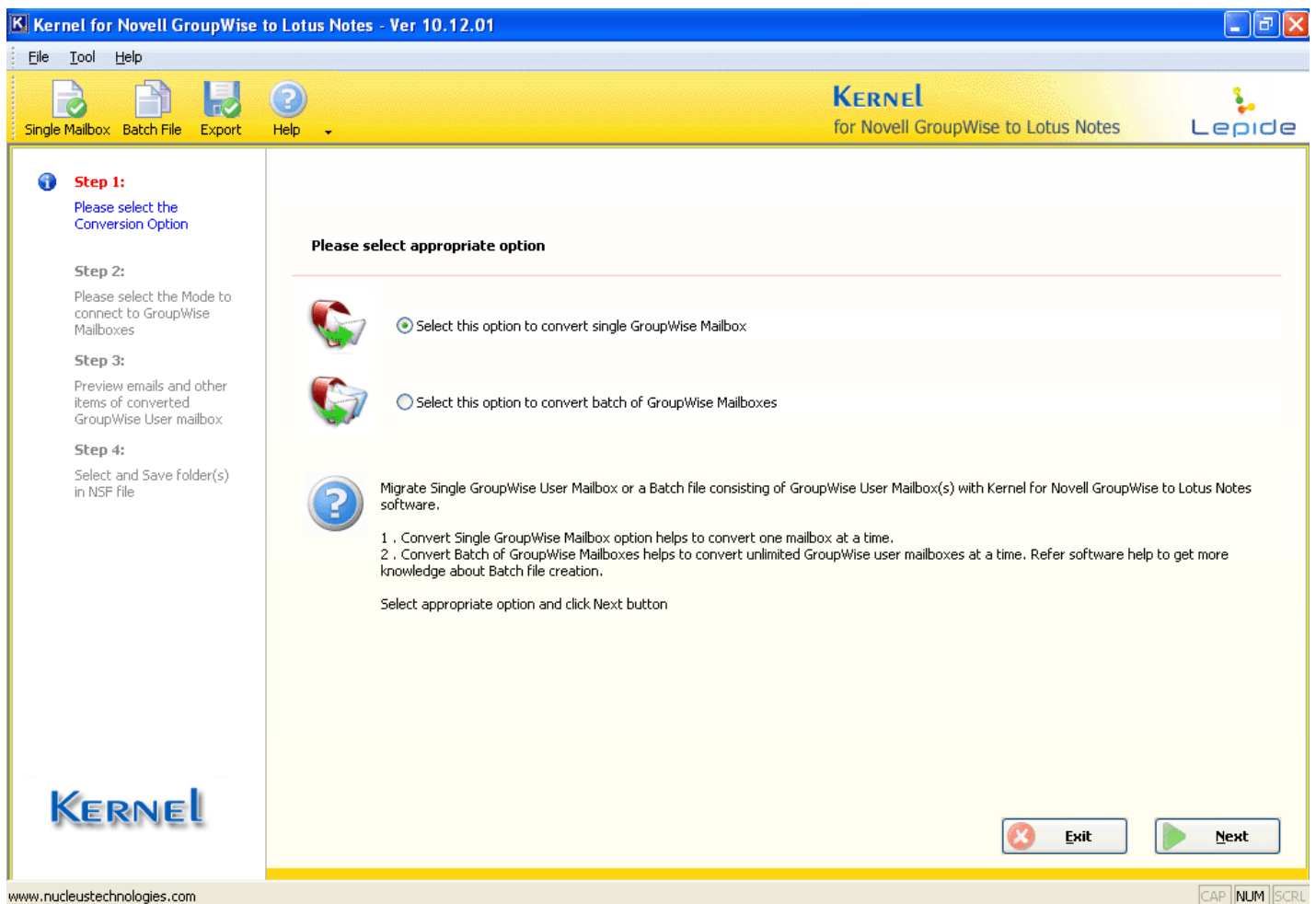


Figure 5.1: Main Window of Kernel for Novell GroupWise to Lotus Notes

2. Select **this option to convert single GroupWise Mailbox** option and click **Next** button to convert Single GroupWise mailbox.

The following window will be displayed:

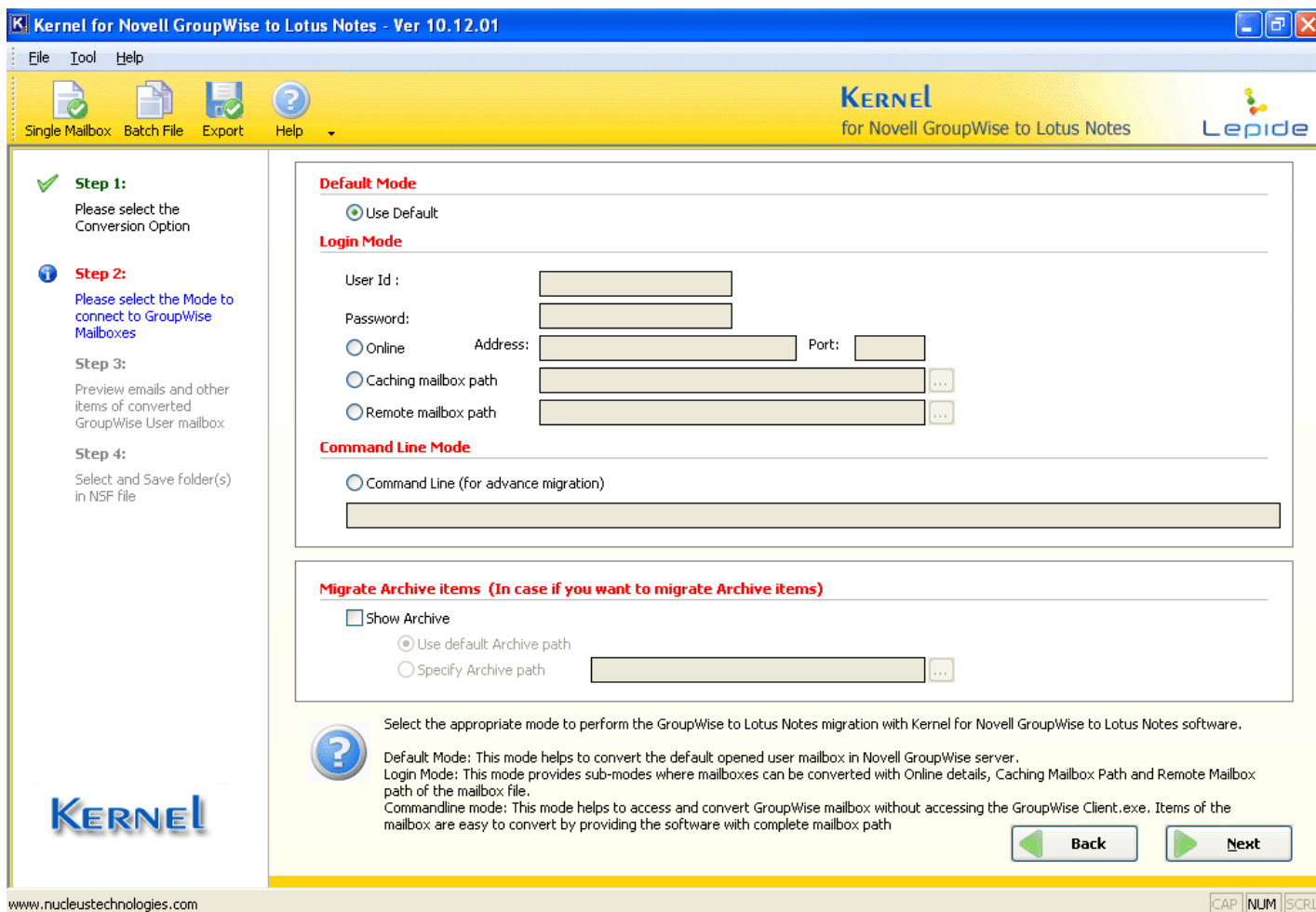


Figure 5.2: Window showing three modes

This window displays the following three modes to connect to the mailboxes of Novell GroupWise:

- **Default Mode**- Allows you to convert the items of current/default mailbox in GroupWise client.
- **Login Mode**- Further provides sub-modes where mailboxes are connected and migrated. The sub-modes allow you to fetch mailbox with the details such as Online (IP address & Port details), Caching Mailbox Path and Remote Mailbox path.
- **Command Line Mode (for advance migration)** - Enables you to access and convert GroupWise mailbox without accessing or opening the GroupWise client. All you have to do is type complete mailbox path.

Migrate Archive Items

Enable this option to migrate archived items with the other items:

- **Use default Archive path**- Select this option if you want the software to fetch archives from the default archive folder path

- **Specify Archive path**- Select this option to specify any other path to locate archive folder

5.1.1 Default Mode

Select Default mode to migrate the current working user mailbox in Novell GroupWise client.

In order to select **Default Mode**, first select “Select this option to convert Single GroupWise Mailbox” option on Software Home Page and click **Next**. The following window will appear:

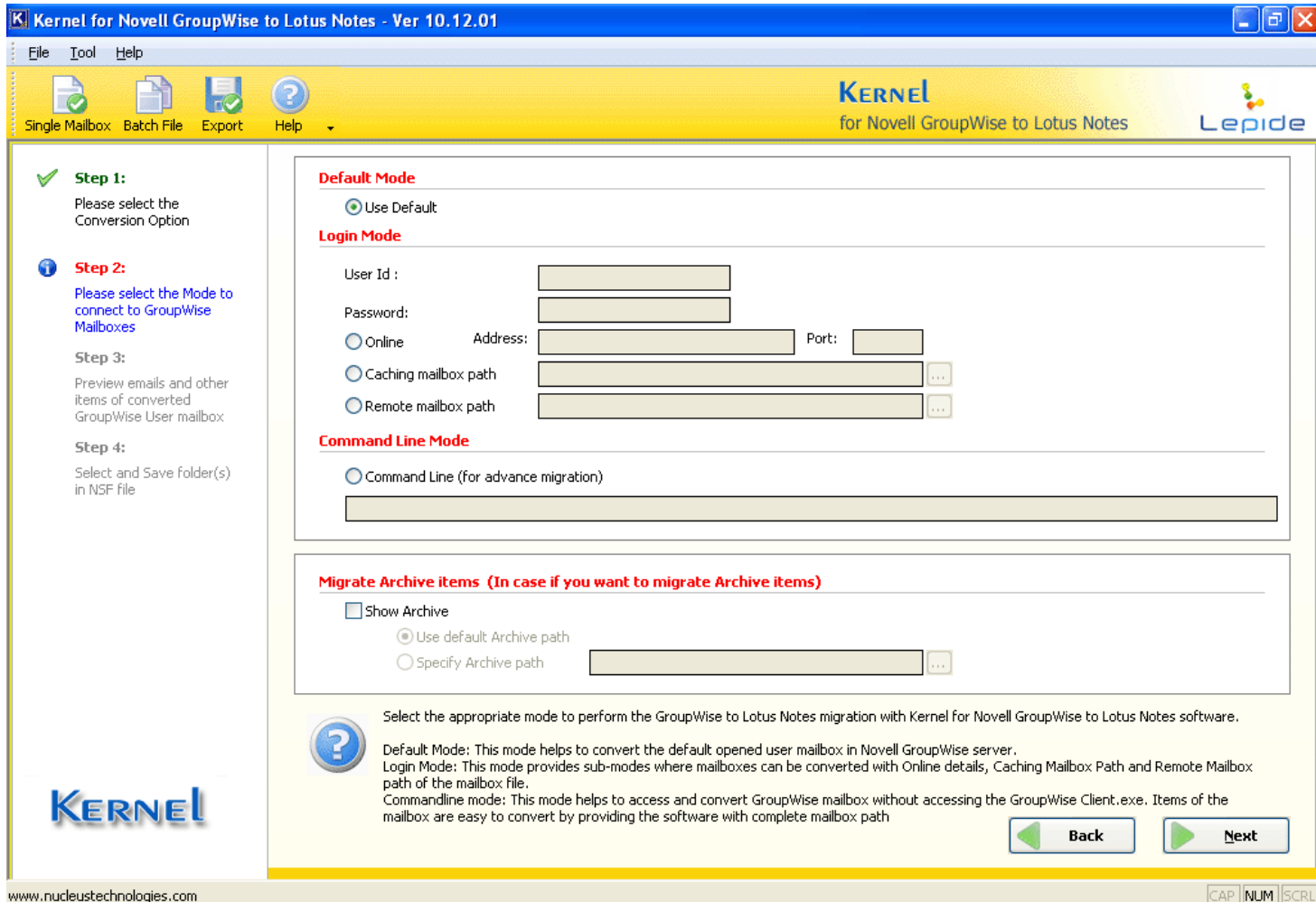


Figure 5.3: Using Default Mode

 The “Use Default” option is selected by default in the software

1. Select the **Use Default** option to fetch data from GroupWise mailbox in Default mode. This option is selected by-default in the software and therefore connects to the currently opened GroupWise mailbox in Novell GroupWise Client.

 Select the **Migrate Archive items** option to migrate archived emails

- Click the **Next** button. Kernel for Novell GroupWise to Lotus Notes will scan the GroupWise mailbox meticulously for the existing items in it and display all of them in a tree-like structure:

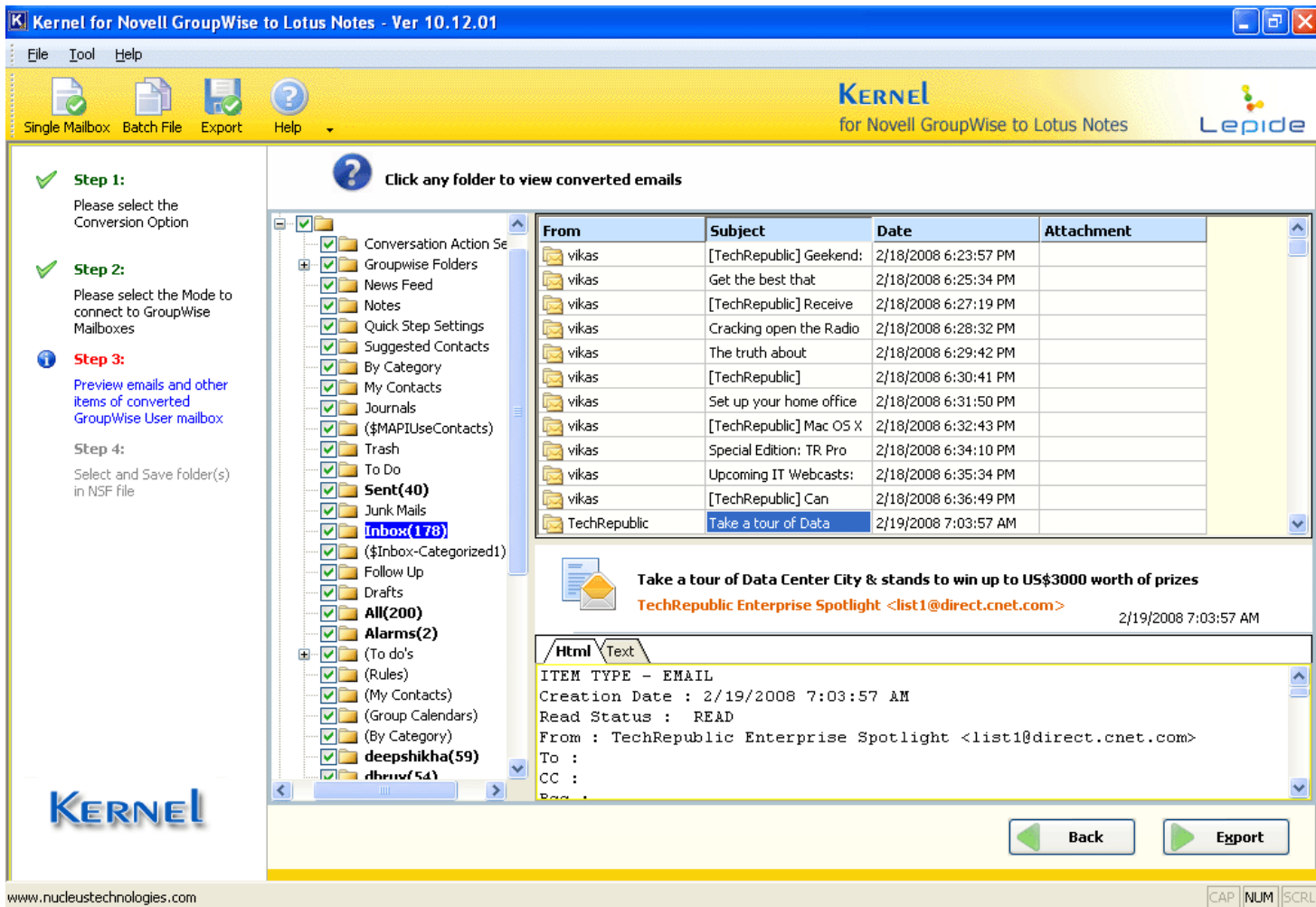


Figure 5.4: Enlisted Folders from Novell GroupWise mailbox

- Click on any of the folder to preview the contents of the folder. You can select any of the tab to preview the contents in text or HTML format:

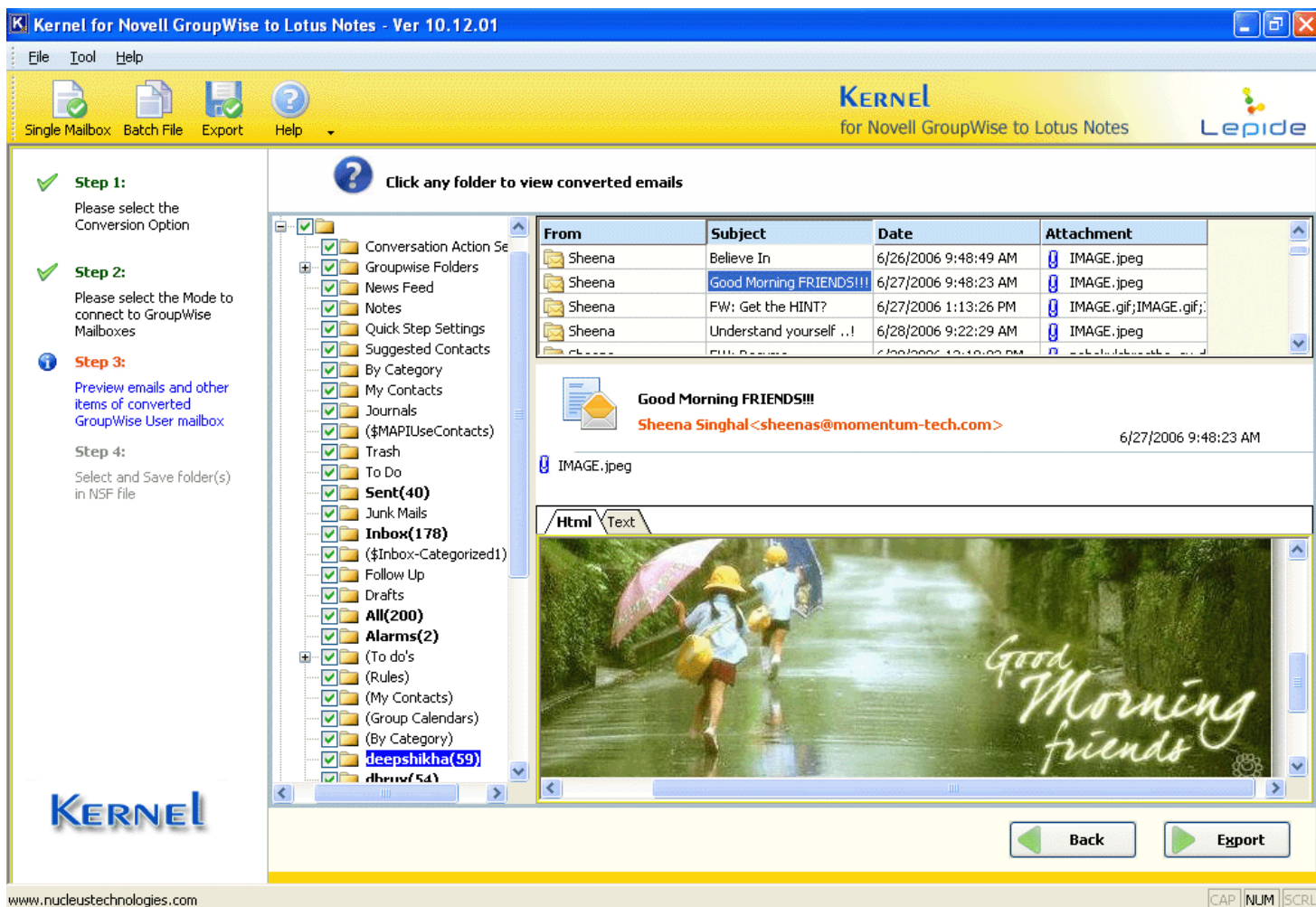


Figure 5.5: Preview Window

4. Click the **Export** button to continue. Software will display the following dialog:

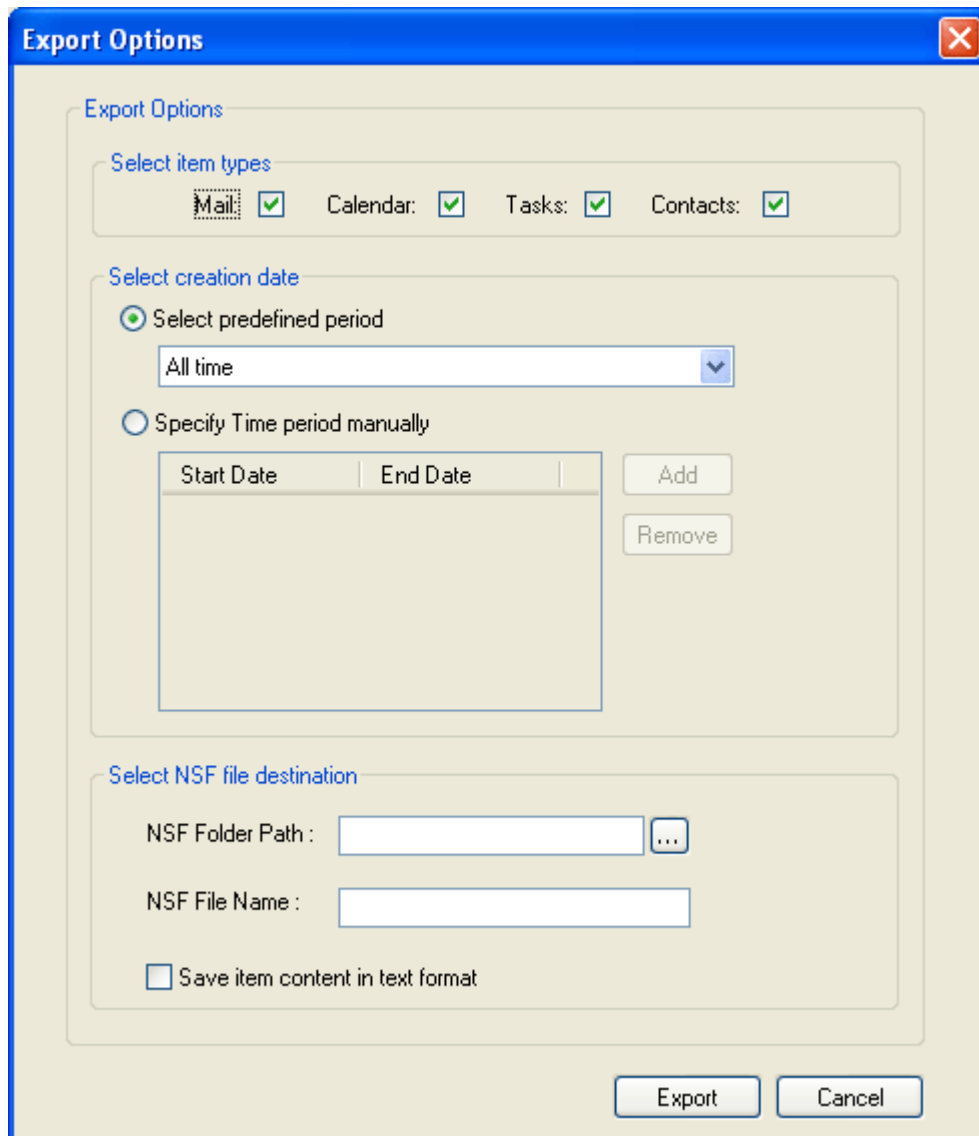



Figure 5.6: Export Options for saving converted data

- **Select the item types-** Select the items from Mail messages, Calendar entries, Tasks and Contacts that you want to migrate from GroupWise mailbox to NSF file format.
- **Select Creation date-** Select the time period for which time duration you want to perform the migration. You can select from options of Select predefined time period or Specify Time period manually
- **Select NSF file destination-** Click the  button to select the NSF Folder Path where you wish to save the converted NSF file. Similarly, type NSF File Name that you want to name the newly created NSF file.
- **Save item content in text format-** Select this option to save the migrated data in text format and accelerate the saving process.

5. After you select the required options for exporting the converted data, the software starts saving the migrated data:

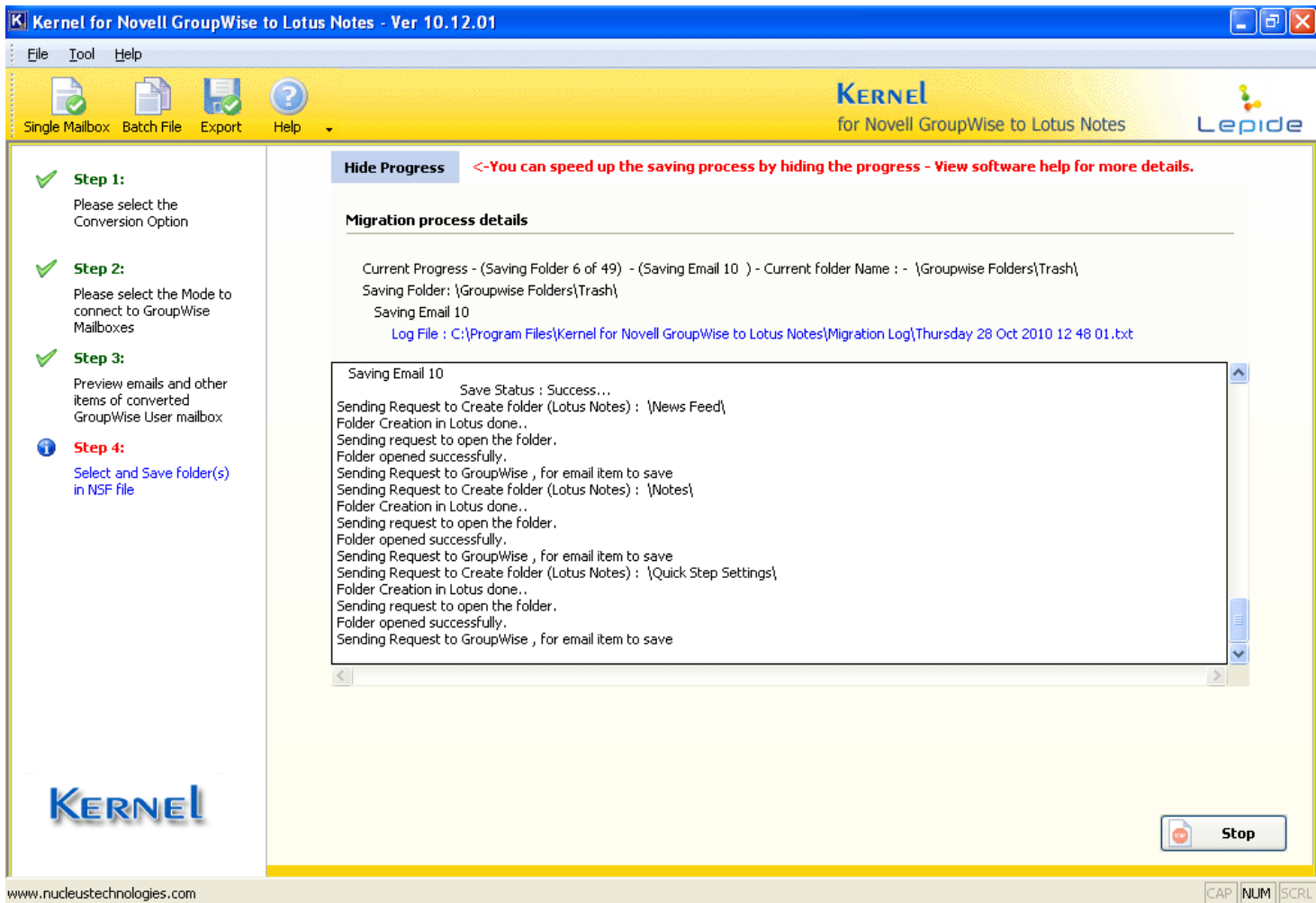


Figure 5.7: Saving Process

6. After the software performs the Novell GroupWise to Lotus Notes migration flawlessly, it shows the screen given:

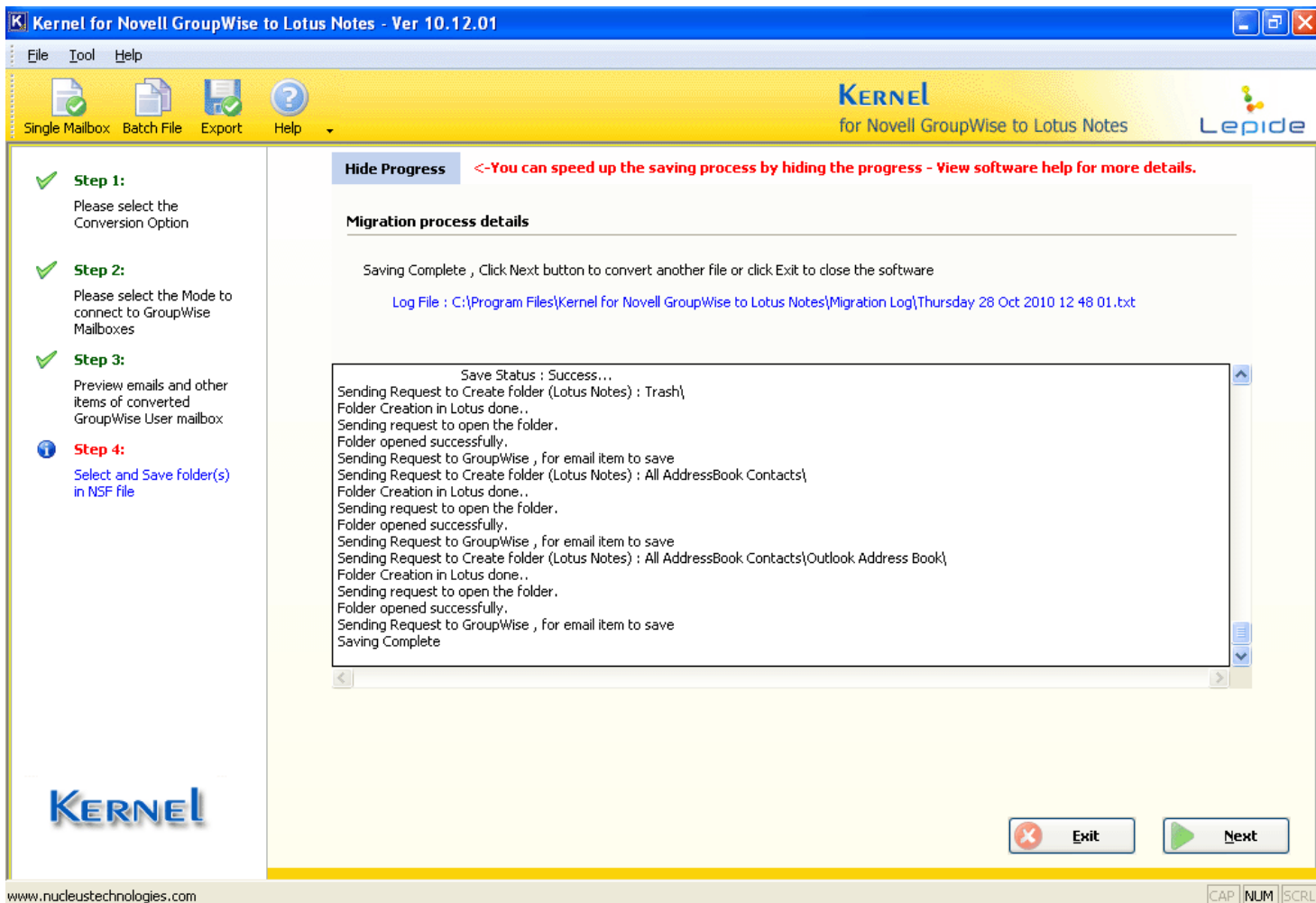


Figure 5.8: Saving Complete

7. The software also provides its users with Log file in .txt format so that you can check the events that took place while migrating the Novell GroupWise mailbox to NSF file format.

5.1.2 Login Mode

Login Mode further offers three sub-modes: Online, Caching and Remote Login mode:

Online Mode

Online mode allows you to get connected to the GroupWise mailbox but requires the user authentication for user mailbox, IP Address and Port of the computer system where user mailbox exists or is saved. In order to fetch GroupWise mailbox data through Online mode, follow the steps given below:

1. Select the **Online** option to access the GroupWise mailbox in Online mode. When you select this option, User ID, Password, Address and Port text field(s) activate, so that you can enter the details of the required GroupWise mailbox:

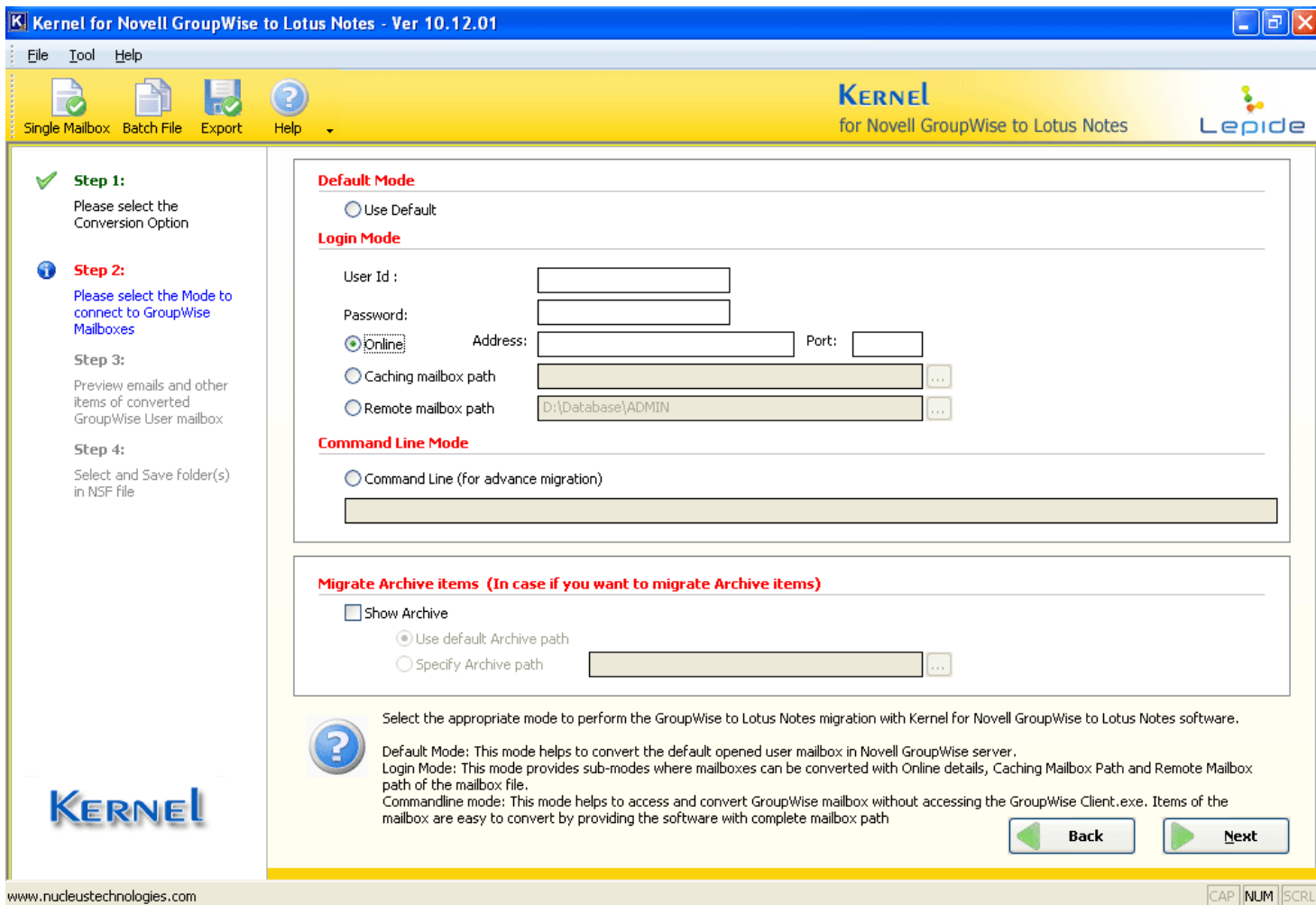


Figure 5.9: Using Online Mode

2. Type the User ID and Password of the GroupWise Mailbox that you want to migrate from Novell GroupWise to Lotus Notes. Also, type the IP address and Port number of the computer where Novell GroupWise server is installed:

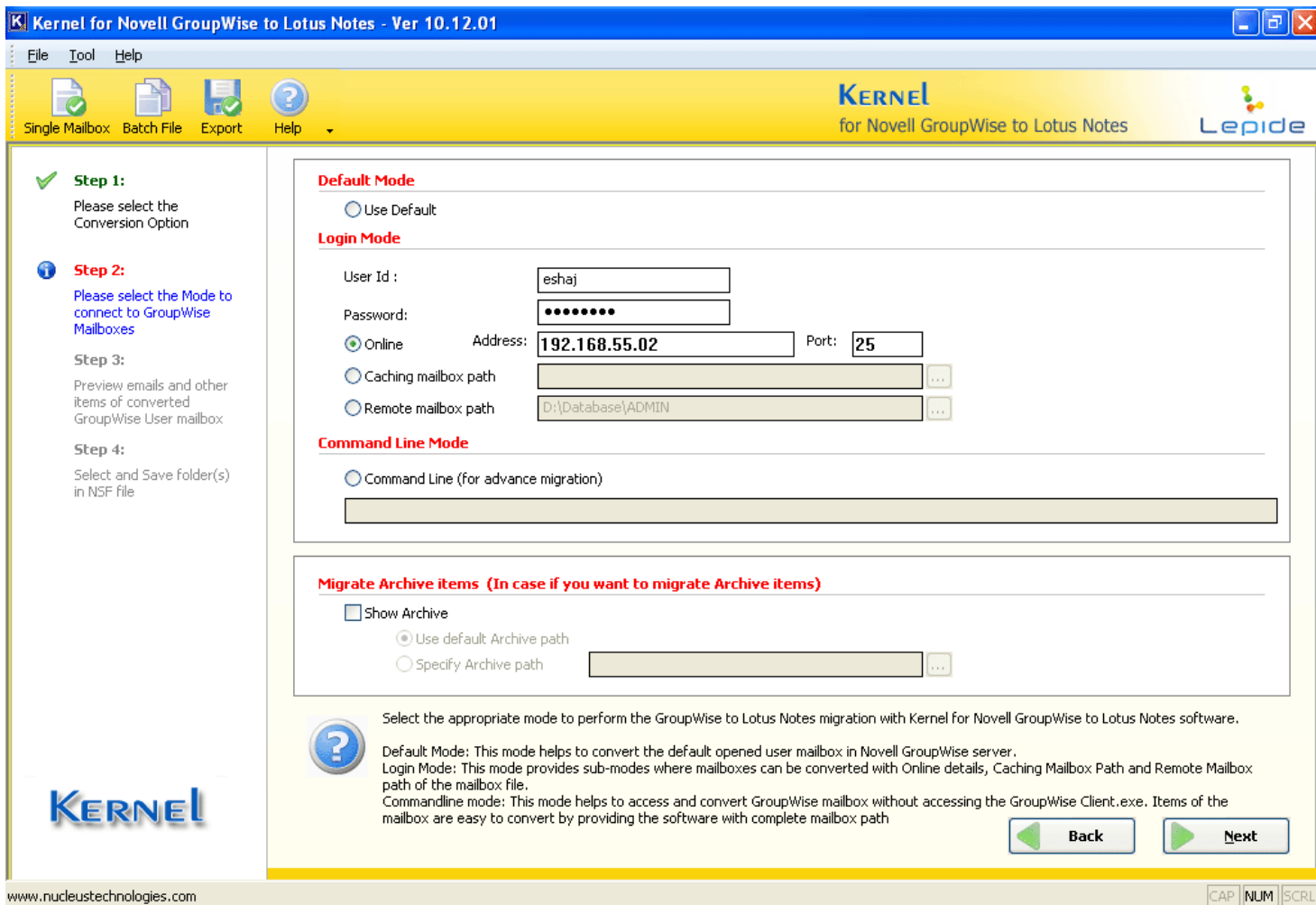


Figure 5.10: Entering Authentication details for Online Mode

3. Click the **Next** button to continue. Kernel for Novell GroupWise to Lotus Notes will connect to the allied GroupWise mailbox with the provided details, scan the file to extract items and then software will enlist these items in tree-like structure:

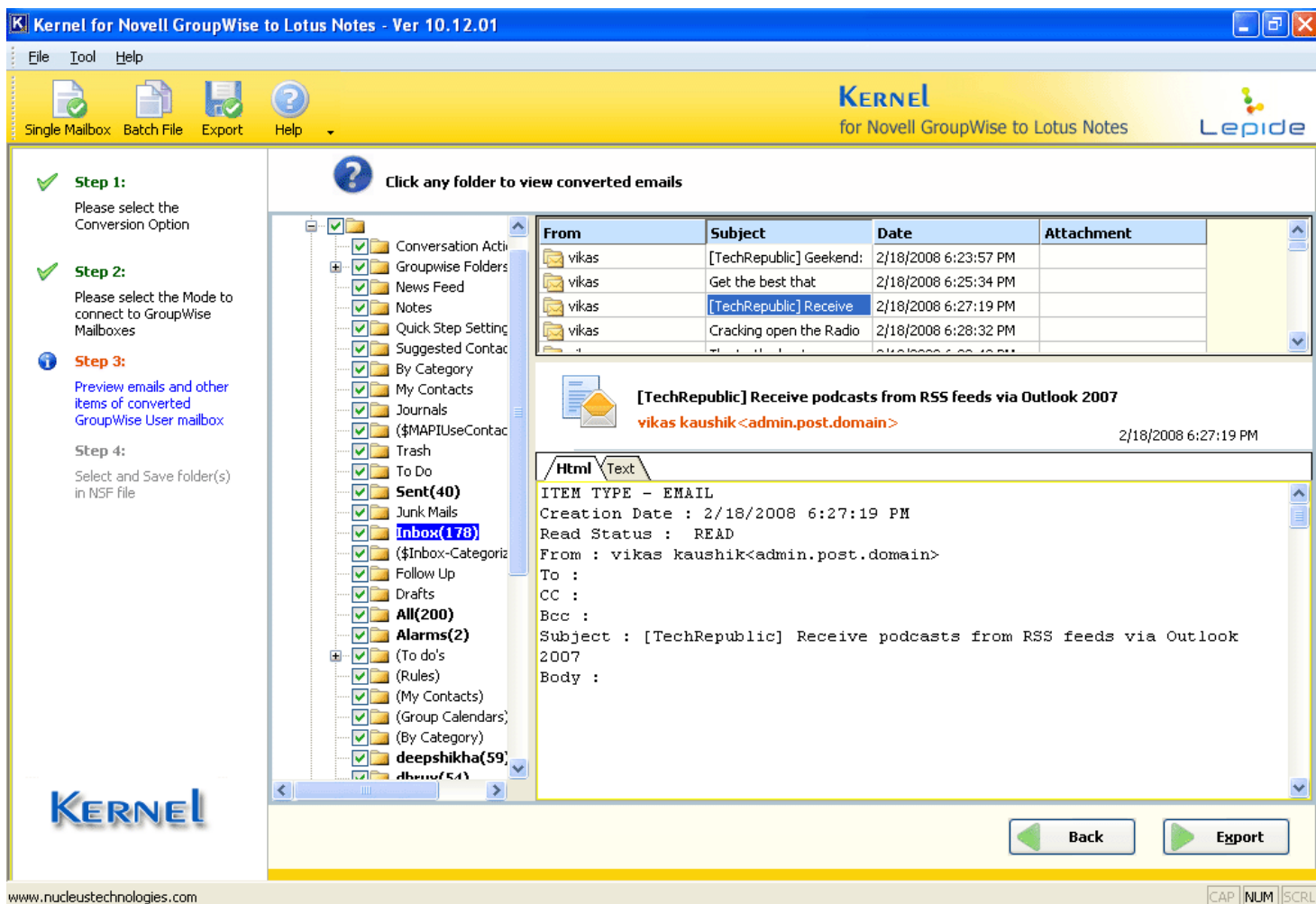



Figure 5.11: Preview Window

Select any of the folders to check the preview of the contents including Emails, Calendar, Contacts and other items. Right pane of the window displays the respective items of the folder selected from the left pane.


The bottom pane of the window contains two tabs: Text and HTML. You can select any of the tabs to view the preview of selected email in Text or HTML format.

4. Click **Export** button to continue and save the converted data as mentioned in Step 4 in Section 5.1.1
5. After you select the required options for exporting the converted data, the software starts saving the migrated data.
6. After the software performs the Novell GroupWise to Lotus Notes migration flawlessly. The software also provides its users with Log file in .txt format so that you can check the events that took place while migrating the Novell GroupWise mailbox to NSF file format.

 Select the Migrate Archive items option to migrate archived emails

Caching Mailbox Path Mode

This mode helps the user to get connected to the Caching mailbox of GroupWise mailbox and requires User ID and Password as the authentication to access Caching Mailbox.

 Prior to using this mode, ascertain that your administrator has enabled the Cache mode in Novell GroupWise Server

In order to fetch GroupWise mailbox data through Caching Mailbox Path, follow the steps given below:

1. Select the **Caching mailbox path** option to access the GroupWise mailbox in Online mode. When you select this option, User ID, Password and Caching mailbox path field(s) activate, so that you can enter the details of the required GroupWise mailbox:

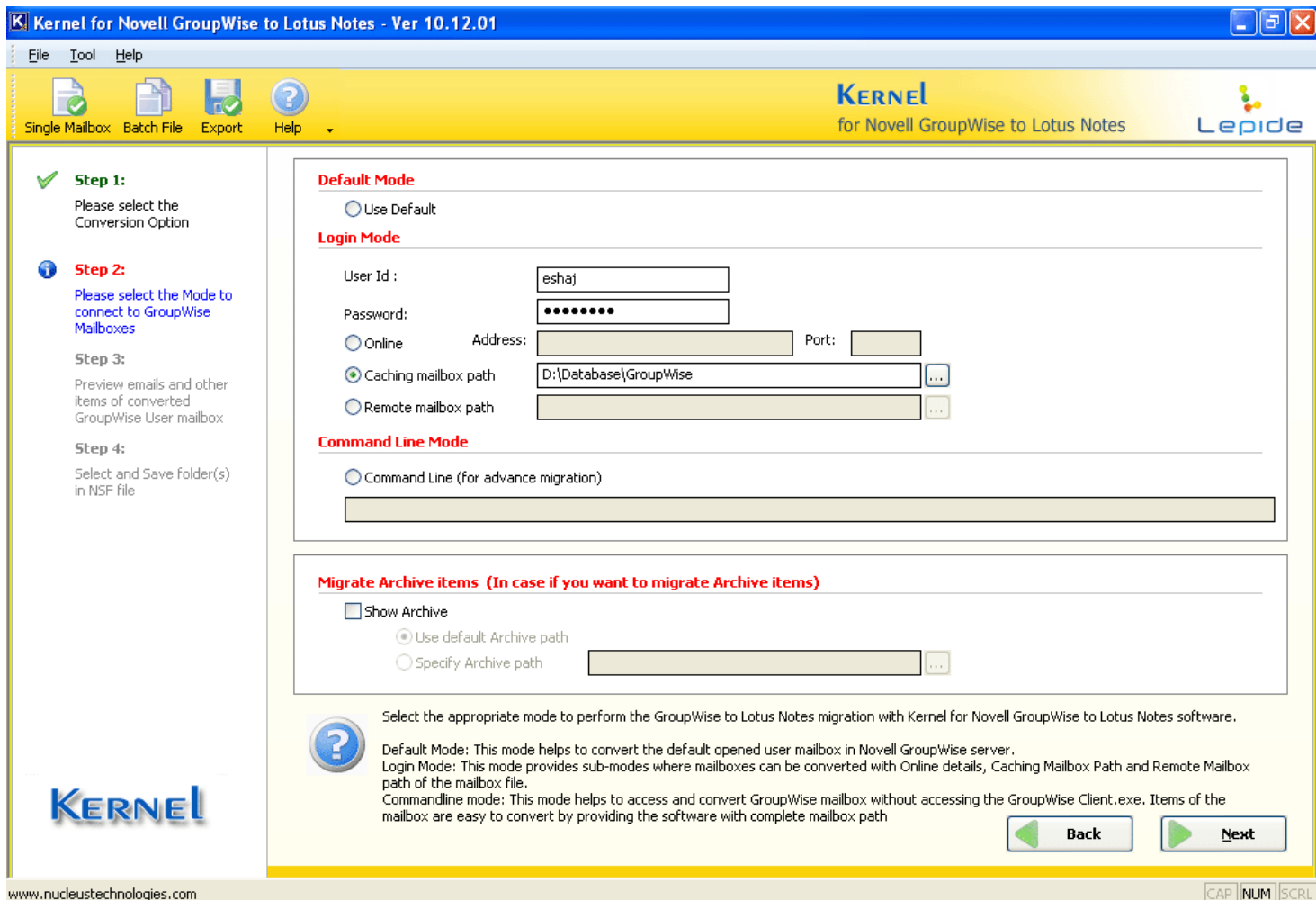




Figure 5.12: Using Caching Mailbox path

2. Type the User Id and Password of the mailbox which you want to migrate from Novell GroupWise to Lotus Notes. Also define the caching mailbox path with the  button
3. Click the **Next** button to continue. Kernel for Novell GroupWise to Lotus Notes will connect to the allied GroupWise mailbox with the provided details, scan the file to extract items and then software will enlist these items in tree-like structure.
4. Select any of the folders to check the preview of the contents including Emails, Calendar, Contacts and other items. Right-pane of the window displays the respective items of the folder selected from the left pane.

The bottom pane of the window contains two tabs: Text and HTML. You can select any of the tabs to view the preview of selected email in Text or HTML format.

5. Click **Export** button to save the converted data and save the converted data as mentioned in Step 4 in Section 5.1.1
6. After you select the required options for exporting the converted data, the software starts saving the migrated data.
7. Software performs the Novell GroupWise to Lotus Notes migration flawlessly. The software also provides its users with Log file in .txt format so that you can check the events that took place while migrating the Novell GroupWise mailbox to NSF file format.

 Select the **Migrate Archive items** option to migrate archived emails

Remote Mailbox Path Mode

Remote Mailbox Path mode allows you to get connected to GroupWise mailbox with remote path of the location where the mailbox is saved. To fetch the data from the user mailbox, you need to provide the path and password of the user mailbox. In order to fetch GroupWise Mailbox with Remote Mode, follow the process given below:

1. Select the Remote mailbox path option to access the GroupWise mailbox in remote mode. This option activates password field to enter the password of the GroupWise mailbox:

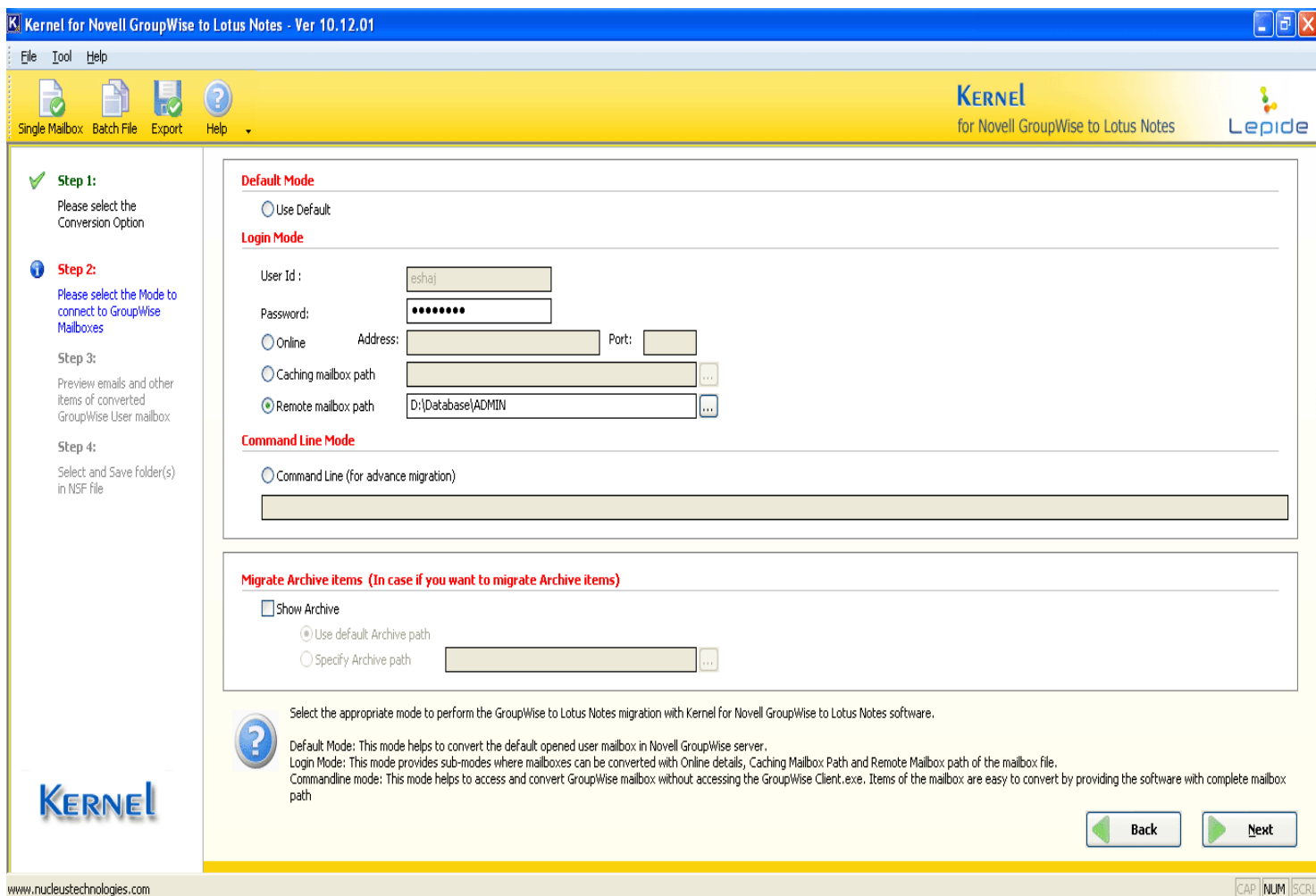





Figure 5.13: Using Remote Mailbox path

 You need to enter password for password-protected mailboxes. If the mailbox is not password protected, then you do not require entering password

2. Type the password of the mailbox which you want to migrate using Kernel for Novell GroupWise to Lotus Notes. Also define the remote mailbox path through the  button.
3. Click the **Next** button to continue. Kernel for Novell GroupWise to Lotus Notes will connect to the allied GroupWise mailbox with the provided details, scan the file to extract items and then software will enlist these items in tree-like structure.
4. Select any of the folders to check the preview of the contents including Emails, Calendar, Contacts and other items. Right pane of the window displays the respective items of the folder selected from the left pane.

The bottom pane of the window contains two tabs: Text and HTML. You can select any of the tab to view the preview of selected email in Text or HTML format.

5. Click **Export** button to save the converted data and save the converted data as mentioned in Step 4 in Section 5.1.1
6. After you select the required options for exporting the converted data, the software starts saving the migrated data.
7. Software performs the Novell GroupWise to Lotus Notes migration flawlessly. The software also provides its users with Log file in .txt format so that you can check the events that took place while migrating the Novell GroupWise mailbox to NSF file format.

 Select the **Migrate Archive items** option to migrate archived emails

5.1.3 Command Line Mode

Using Command Line Mode of Kernel for Novell GroupWise to Lotus Notes allows you to access the Novell GroupWise mailbox without opening or accessing the GroupWise.exe and user mailbox account. If you know the path where GroupWise mailbox is saved, then you can fetch the mailbox data by typing the path in Command Line mode and gain access to mailbox data easily.

1. Select **Command Line** option to perform the migration with Command Line Mode:

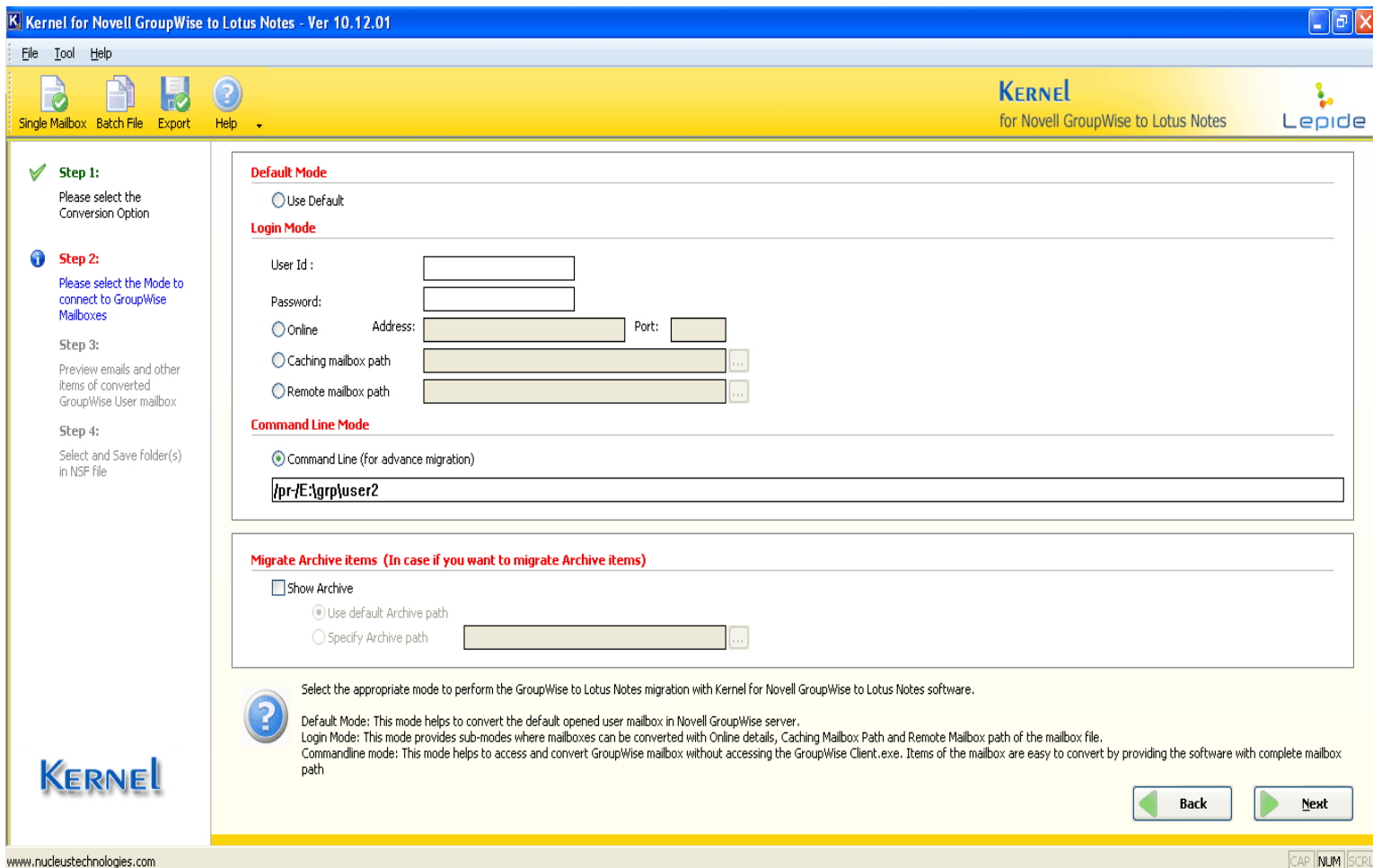



Figure 5.14: Using Command Line Mode


Software prompts you to enter User ID, Password and Path of the Novell GroupWise user mailbox to perform migration process

2. Type the User ID, password and user mailbox path of Novell GroupWise Client can be accessed remotely with the switch and the complete path of the GroupWise user mailbox which is required to be converted.

 Remote Novell GroupWise mailbox can be accessed with the switch and the complete path of the mailbox which is required to be migrated.

3. Click the **Next** button to continue. Kernel for Novell GroupWise to Lotus Notes scans the mailbox and enlists all the folders in a tree like structure. You can preview the contents by selecting the folders from the left pane. Also you can view the preview in two tabs: Text and HTML
4. Click the **Export** button to save the converted data and save the converted data as mentioned in Step 4 in Section 5.1.1
5. After you select the required options for exporting the converted data, the software starts saving the migrated data.

6. Software performs the Novell GroupWise to Lotus Notes migration flawlessly. The software also provides its users with Log file in .txt format so that you can check the events that took place while migrating the Novell GroupWise mailbox to NSF file format.

 Select the **Migrate Archive items** option to migrate archived emails

5.2 Multiple Mailbox Migration

You can convert multiple GroupWise Mailboxes using Kernel for Novell GroupWise to Lotus Notes. In order to convert multiple GroupWise mailboxes you need to create a CONLN file. You can create the CONLN file using Kernel for Novell GroupWise to Lotus Notes Batch Migration File Creator. You can convert multiple GroupWise Mailboxes in the following two ways:

5.2.1 Creating .CONLN file

Batch file is a file using which you can enlist and save GroupWise user mailbox information to convert multiple GroupWise user mailboxes at once. Create Batch file and save records of unlimited GroupWise user mailbox accounts. Creation of batch file eases the task of defining the saving location for the converted mailboxes in NSF file format.

1. Launch Kernel for Novell GroupWise to Lotus Notes Batch Migration File Creator software by clicking **Start > All Programs > Kernel for Novell GroupWise to Lotus Notes > Kernel for Novell GroupWise to Lotus Notes Batch Migration File Creator**. Welcome Page of the software appears:

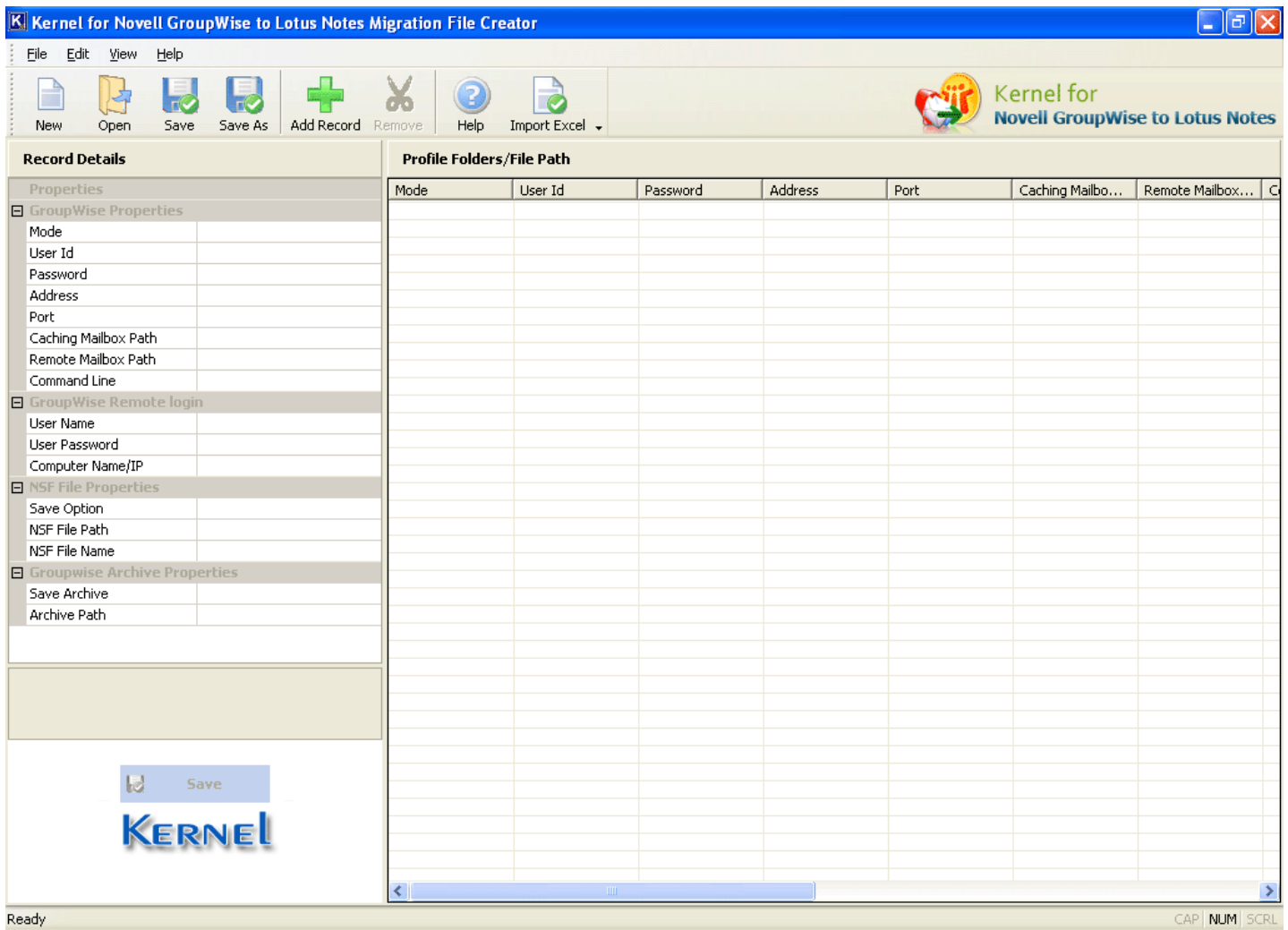


Figure 5.15: Welcome Screen of Batch file creator tool

2. Select **Add Record** option from the **File** menu or click the **Add Record** button from the tool bar. The GroupWise Information window gets displayed:

GroupWise Information

Please add all GroupWise related information

GroupWise Login Details

User Id

Password

Online Address Port

Caching Mailbox Path ...

Remote Mailbox Path ...

Command Line (for advance migration)

Archive Details

Migrate Archive items

Use default Archive path

Specify Path ...

Advance Options

This option is used in case if software is not able to access Remote Mailbox Path or Caching Mailbox Path

Note :
The user name should be followed by domain name
Example: domain\username

User Name

Password

Computer Name/Ip:



< Back Next > Cancel

Figure 5.16: GroupWise Information Dialog

You need to enter the following details for creating a CONLN batch file:

GroupWise Login Details

Field Name	Field Description
User ID	Type the user ID of the GroupWise user mailbox that you want to migrate
Password	Type the password of the GroupWise Mailbox that you want to migrate
Online	Connect to the GroupWise mailbox using the Online mode. To do so, you need to enter details including IP Address and Port Number

Caching Mailbox Path	Connect to GroupWise mailbox by selecting the Caching mailbox path using the  button
Remote Mailbox Path	Connect to GroupWise mailbox by selecting the Remote mailbox path using the  button
Command Line (for advance migration)	Define command line to access GroupWise mailbox

Advance Options Details

Field Name	Field Description
User Name	Type the user name of the computer where remote mailbox is stored
Password	Type the password of the computer where remote mailbox is stored
Computer Name/IP	Type the Computer Name/IP of the computer where remote mailbox is stored

Archive Details

Field Name	Field Description
Migrate Archive Items	Select this checkbox to define details of the archive folder for a user mailbox so that you can migrate archive items too
Use default Archive path	Select this option if you want the software to fetch the archive items from the default Archive location path
Specify Path	Select this option to define the path of Archive folder

- After selecting the required options and filling the required details, click the Next button, the following dialog appears:

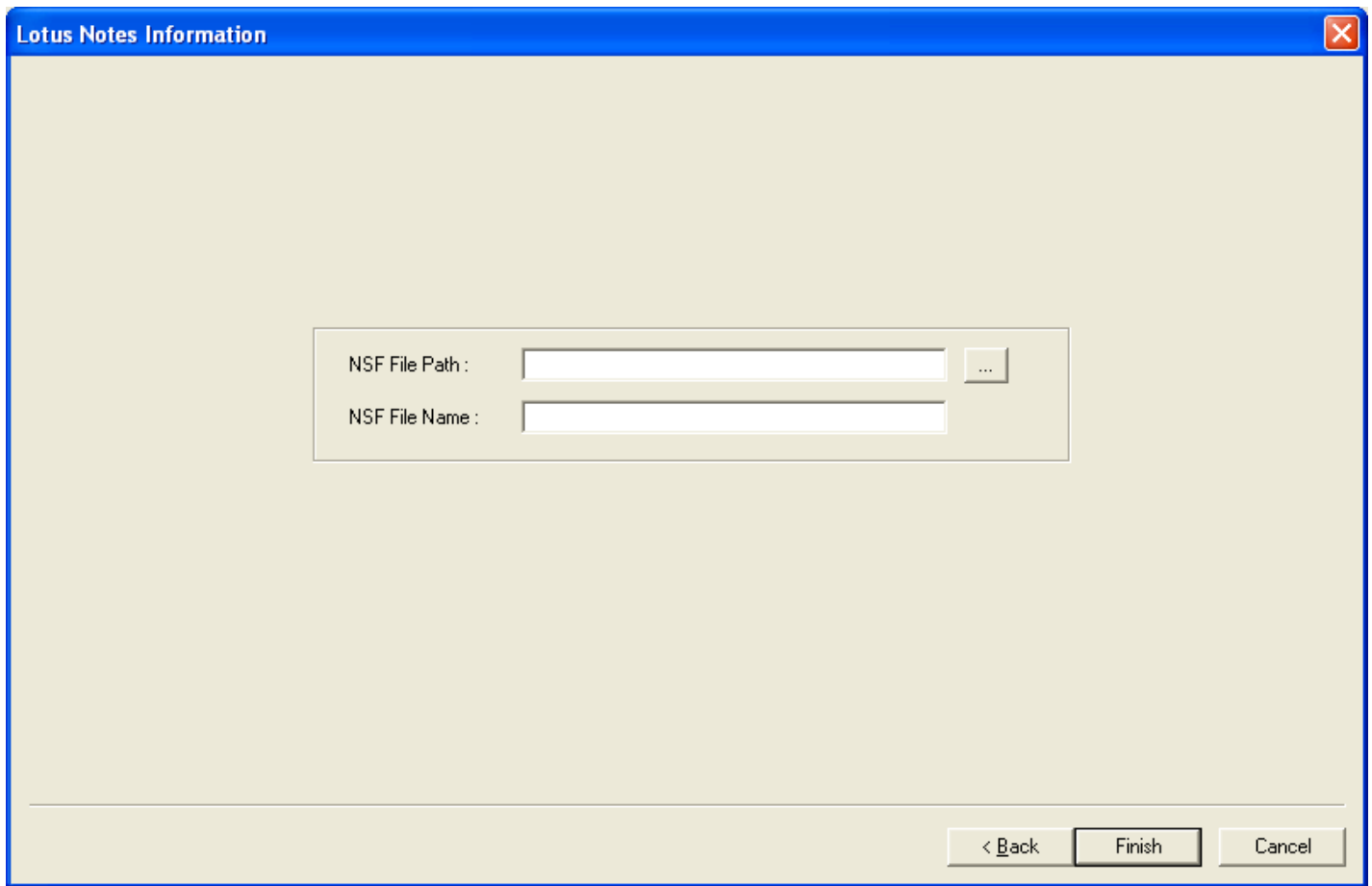


Figure 5.17: Defining NSF file location for saving the converted data

Here you need to enter the NSF File Path or desired location where you wish to save the converted data. Type NSF File Name that you want to give to the NSF file.

4. Click **Finish** button to continue saving the CONLN file. All the created records of the GroupWise User Mailboxes gets listed in the software

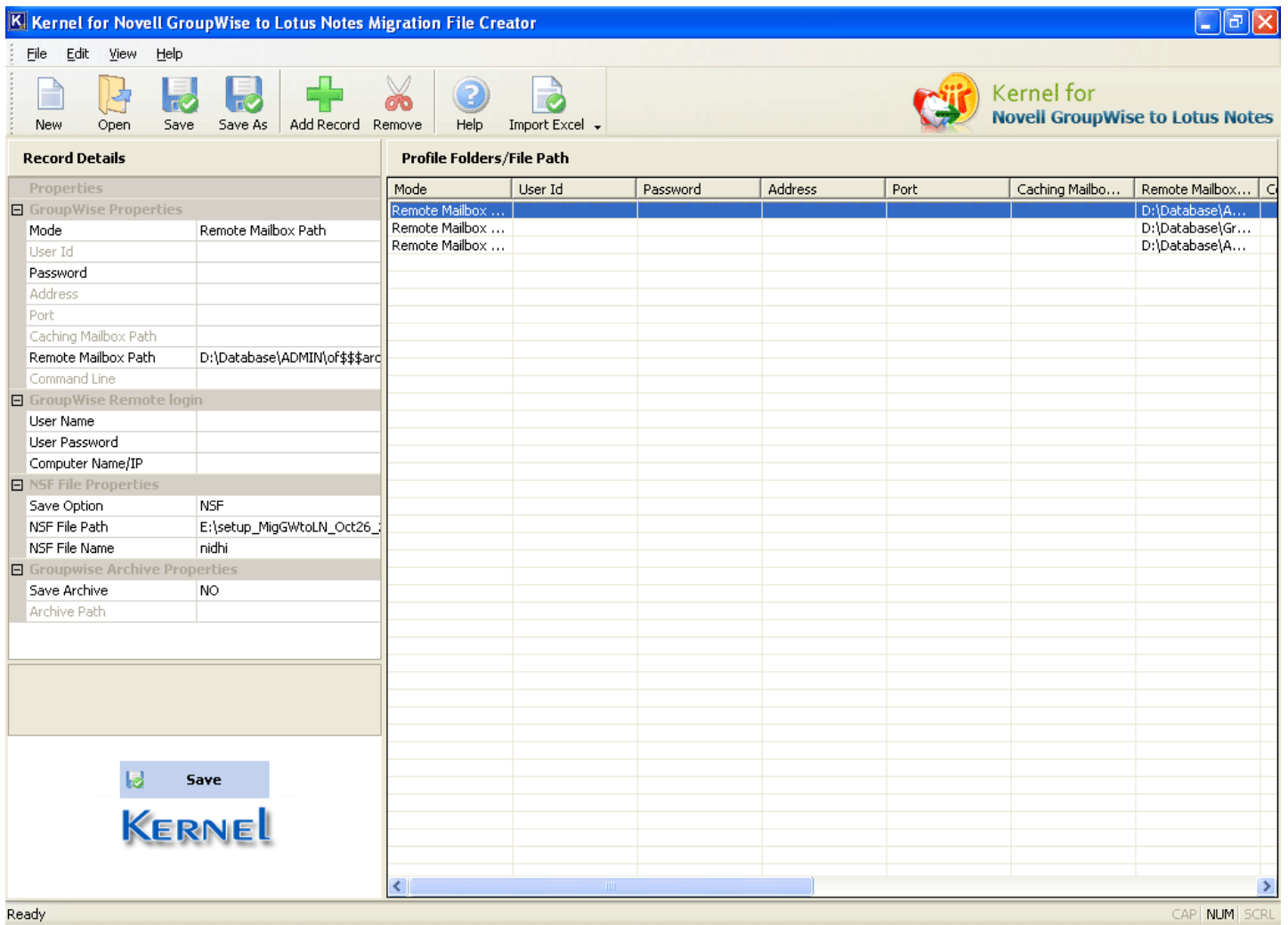



Figure 5.18: Enlisted Mailbox records

 You can edit details of the selected GroupWise User Mailbox from left pane of the window i.e. from the **Record Details** section

5. Click the **Save** button from the tool bar to save the batch file or click the **Save As** button to select and save disk saving location of the file on your computer system

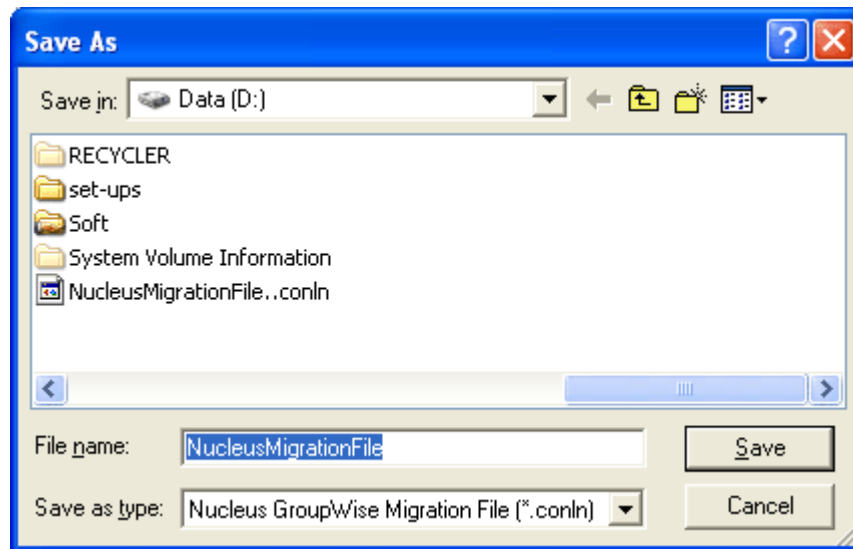


Figure 5.19: Saving the .CONLN file

Kernel for Novell GroupWise to Lotus Notes Batch Migration File Creator software by default creates *.conln file which is the batch file for multiple GroupWise mailbox conversion.

5.2.2 Creating Excel database file

You can also prepare an Excel database file that comprises of complete information about the Novell GroupWise user mailboxes. Being a network administrator, you can save a lot of time which gets utilized in creating .CONLN batch file and editing it. With this feature in the software, you can save details in .XLS file and export it to Kernel for Novell GroupWise to Lotus Notes Batch Migration File Creator software and then save it to .CONLN Batch file for multiple mailbox conversion.

The Excel worksheet that you import should be in the following format:

Firstly, the spreadsheet must be named NucleusExcelSheet

Sheet should consist of 15 columns:

1. Mode
2. User ID
3. Password
4. Address
5. Port
6. Caching Mailbox Path
7. Remote Mailbox Path
8. Command Line

9. User Name
10. User Password
11. Computer Name/IP
12. NSF File Path
13. NSF File Name
14. Save Archive
15. Archive Path

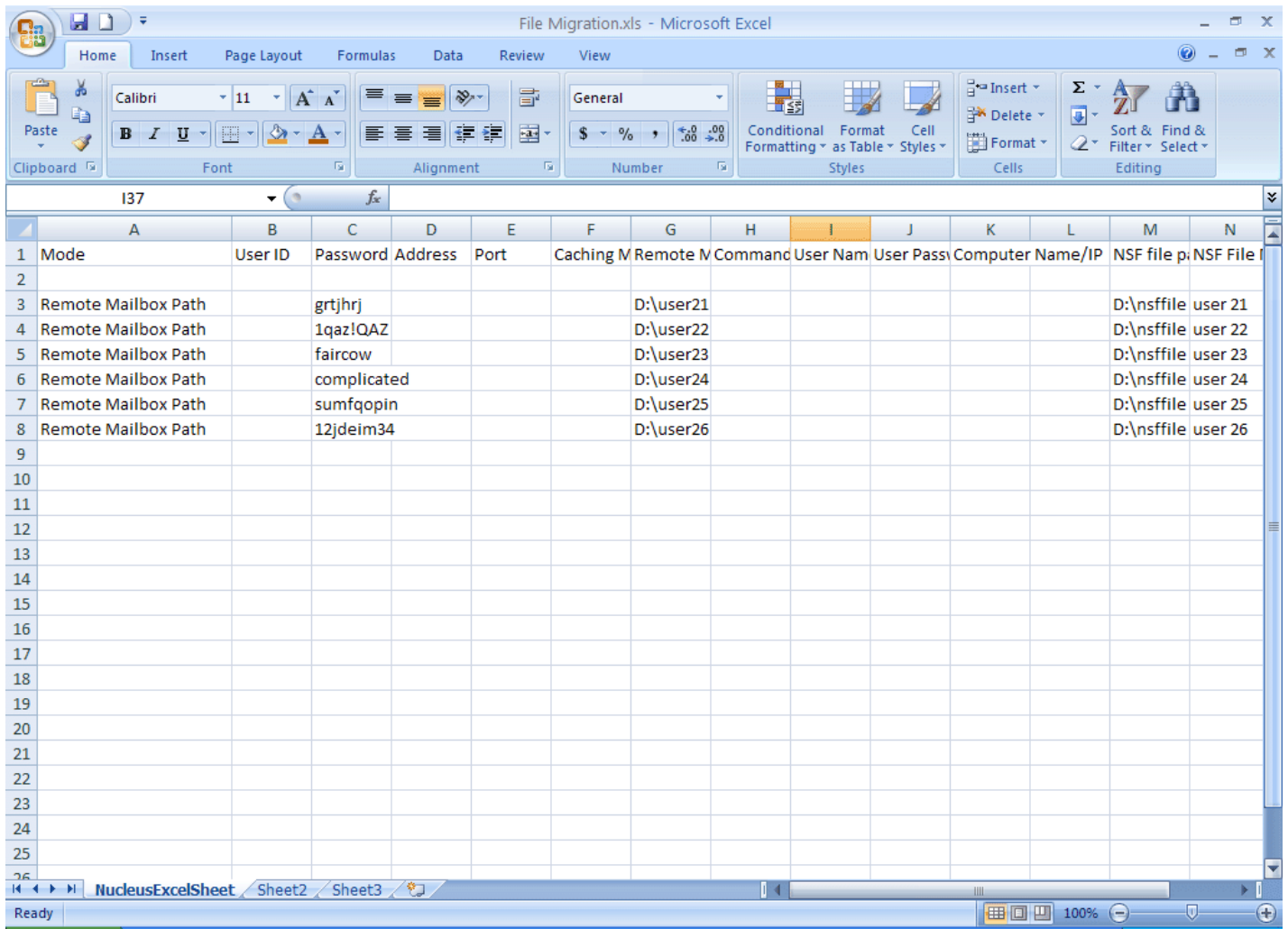


Figure 5.20: Excel sheet format

Filling up the Excel file for different Login modes

The different fields are to be filled according to one of the login types selected. The four login types are:

1. Online
2. Caching Mailbox Path
3. Remote Mailbox Path
4. Command Line (for advanced migration)

First field of the excel sheet can take any one of the above-mentioned values only. The rules to fill different fields according to login type are as follows:

Login Mode (Online)

Mentioned below fields are mandatory while using this mode:

User ID: Type the user name of the mailbox

Password: Type the password of the mailbox

Address: Type the IP address of the Novell GroupWise Server

Port: Type the Port Number of the Novell GroupWise Server

Archive Details: Type "NO" in this field if you want to migrate mailbox items only

Save in NSF file: There are two fields in this option- NSF File Path and NSF File Name

Caching Mailbox Path

Mentioned below fields are mandatory while using this mode:


User ID: Type the user name of the mailbox

Password: Type the password of the mailbox

Caching Mailbox Path: List the path for Caching Mailbox of Novell GroupWise mailbox that you want to migrate

Archive Details: Type "NO" in this field if you want to migrate mailbox items only

Advance Options: There are three fields to be filled in advance options- User name of network computer, its password and Computer Name/IP of the network computer where mailbox is saved

 Although, advance option fields are not compulsory, but recommended. If these fields are not filled, it will be shown as a warning.

Save in NSF file: There are two fields in this option- NSF File Path and NSF File Name

Remote Mailbox Path


Mentioned below fields are mandatory while using this mode:

Password: Type the password of the mailbox

Remote Mailbox Path: List the path for Remote Mailbox of Novell GroupWise mailbox that you want to migrate

Archive Details: Type "NO" in this field if you want to migrate mailbox items only

Advance Options: There are three fields to be filled in advance options- User name of network computer, its password and Computer Name/IP of the network computer where mailbox is saved

 Although, advance option fields are not compulsory, but recommended. If these fields are not filled, it will be shown as a warning.

Save in NSF file: There are two fields in this option- NSF File Path and NSF File Name

Command Line Mode

Mentioned below fields are mandatory while using this mode:

User ID: Type the user name of the mailbox

Password: Type the password of the mailbox

Command Line: This field is necessary, if not filled the software will show certain error messages

Archive Details: Type "NO" in this field if you want to migrate mailbox items only

Save in NSF file: There are two fields in this option- NSF File Path and NSF File Name

5.2.3 Migrate Archived Items

If the archived items for mailbox(s) are required for migration and you require working with Excel database, then you need to perform the following steps for this process:

1. Open the Excel database. Consider that you are using Remote Mailbox mode and need to migrate the archived items for mailbox(s).

- Fill the required details including Password, Remote Mailbox Path, NSF file location, NSF file Name and type YES or Path of the archive folder of user mailbox:

	A	B	C	D	E	F	G	H	I	J	K	L	M	N
1	Mode	User ID	Password	Address	Port	Caching M	Remote M	Command	User Nam	User Pass	Computer Name/IP	NSF file p	NSF File I	
2														
3	Remote Mailbox Path		grtjhrj				D:\user21						D:\nsffile	user 21
4	Remote Mailbox Path		1qaz!QAZ				D:\user22						D:\nsffile	user 22
5	Remote Mailbox Path		faircow				D:\user23						D:\nsffile	user 23
6	Remote Mailbox Path		complicated				D:\user24						D:\nsffile	user 24
7	Remote Mailbox Path		sumfqopin				D:\user25						D:\nsffile	user 25
8	Remote Mailbox Path		12jdeim34				D:\user26						D:\nsffile	user 26
9														
10														
11														
12														
13														
14														
15														
16														
17														
18														
19														
20														
21														
22														
23														
24														
25														
26														

Figure 5.21: Excel file with details

When you select performing archive migration, software will enlist only the archived file items for preview and saving. Other mailbox items are not displayed when you select migrating archived items.

- Import Excel database to Kernel for Novell GroupWise to Lotus Notes Batch Migration File Creator that will display compiled output window with errors, warnings and number of scanned records from the Excel database
- Click **Save As** option to save the records in CONLN batch file at the appropriate location
- Now Launch Kernel for Novell GroupWise to Lotus Notes software and select the batch file conversion option to enlist the CONLN file and perform migration

5.2.4 Importing Excel database file

After you have created the Excel Database file, you must save the database with .CONLN file extension so that you can use this file for multiple GroupWise mailbox migration.

1. Launch Kernel for Novell GroupWise to Lotus Notes Batch Migration File Creator software. The Home page appears:

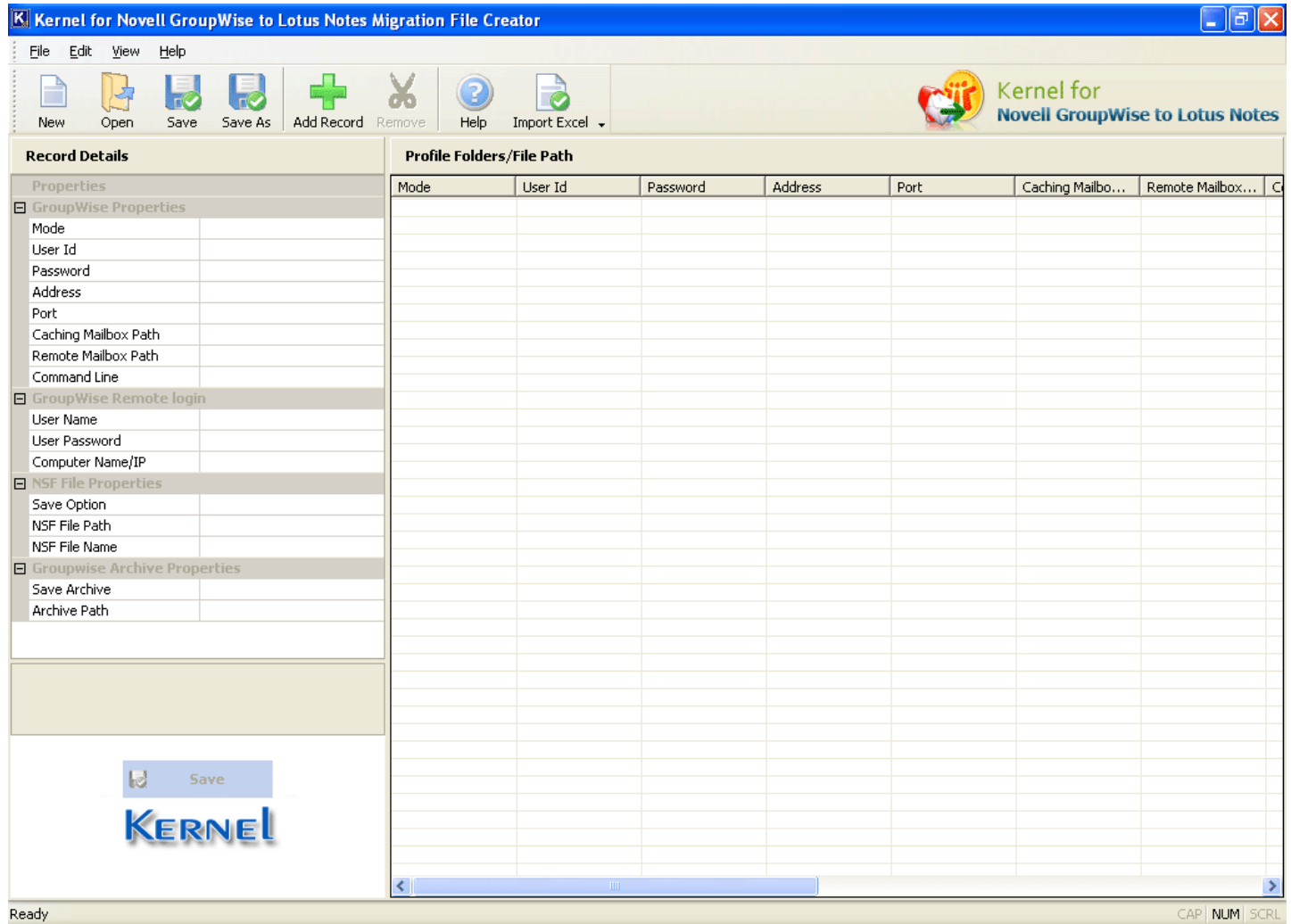


Figure 5.22: Batch file creator software

2. Click the **Import Excel** button on the Tool bar. Software displays the Open window to select NucleusMigrationFile (.XLS) from the location. Browse for the file and enlist the same:

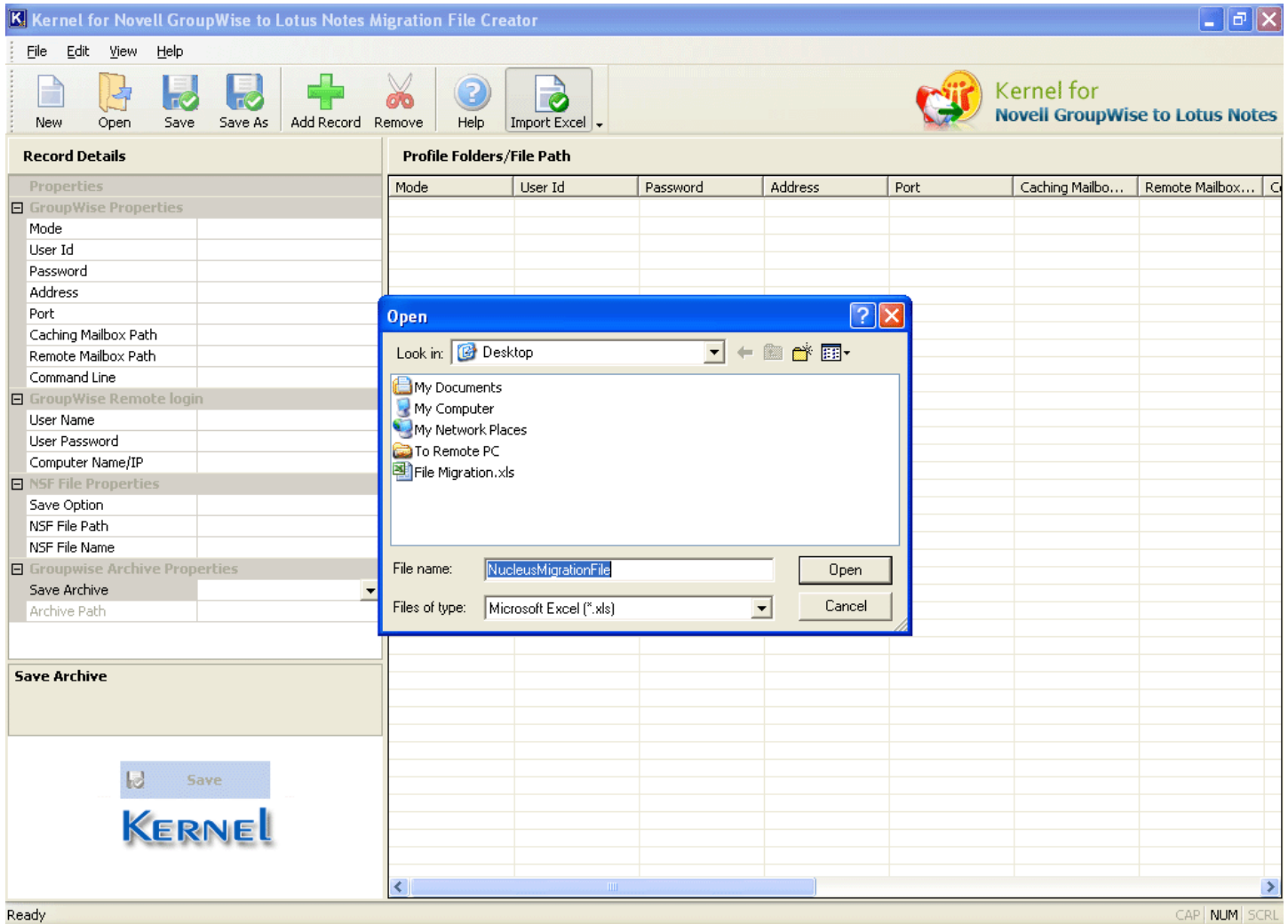


Figure 5.23: Fetching Excel File

At times, certain errors might appear which are displayed in compilation output dialog. Modify as per the compilation output provided by the software. If there are no errors then click **OK** to proceed.

The saved mailbox details will get listed in the software:

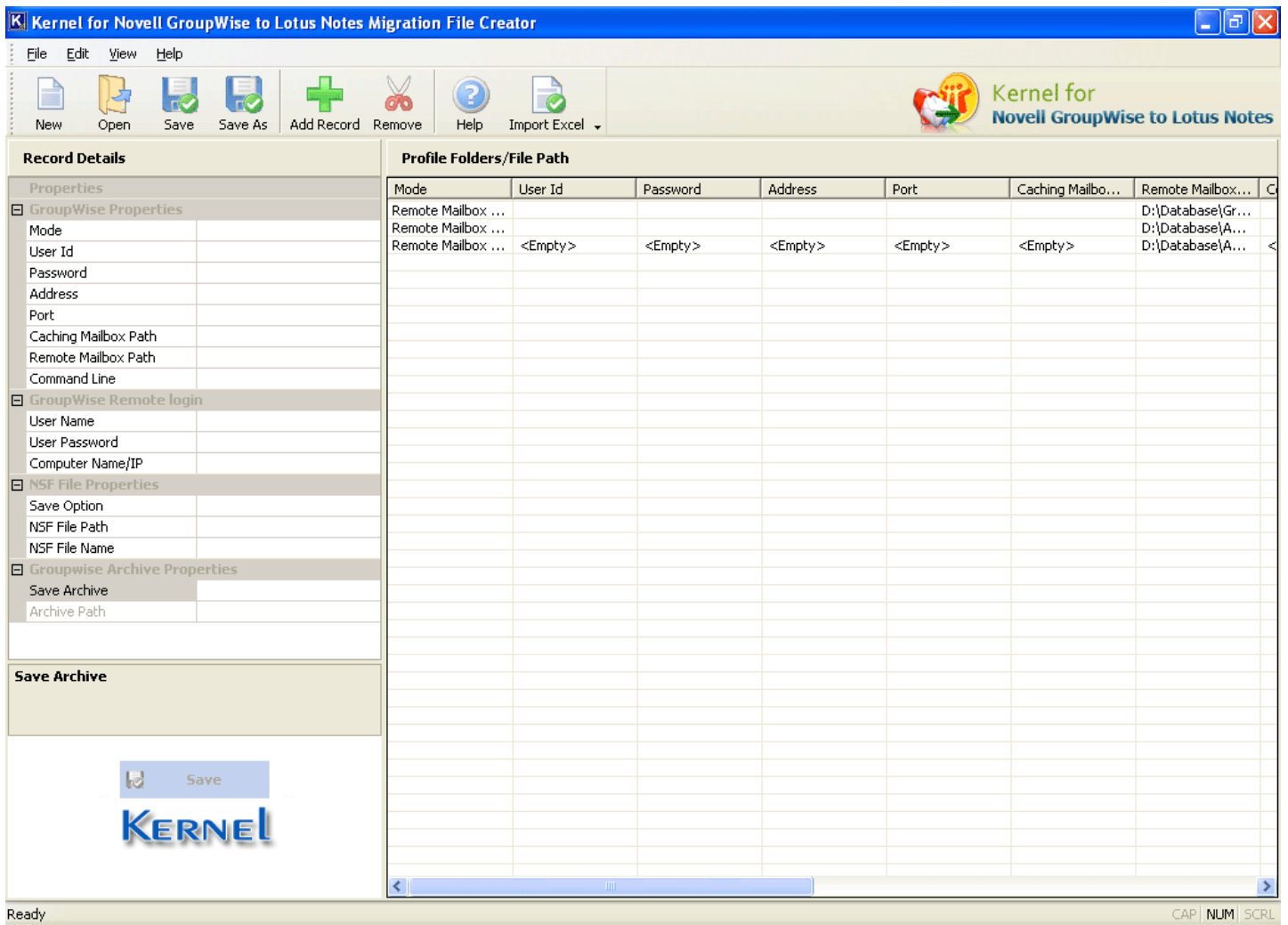


Figure: 5.24: Listing of Mailboxes

3. Click the **Save As** button from the toolbar to save the listed items as .CONLN batch file at appropriate location. Now launch Kernel for Novell GroupWise to Lotus Notes Migration to select the option to convert batch of GroupWise Mailboxes and list the .CONLN batch file for migration.

5.2.5 Using CONLN Batch file for Migration

Batch file is used in Kernel for Novell GroupWise to Lotus Notes software to perform multiple GroupWise mailboxes migration. Here is the process of how you can import the .CONLN batch for multiple GroupWise mailbox migration:

1. Launch Kernel for Novell GroupWise to Lotus Notes migration software. The main window appears:

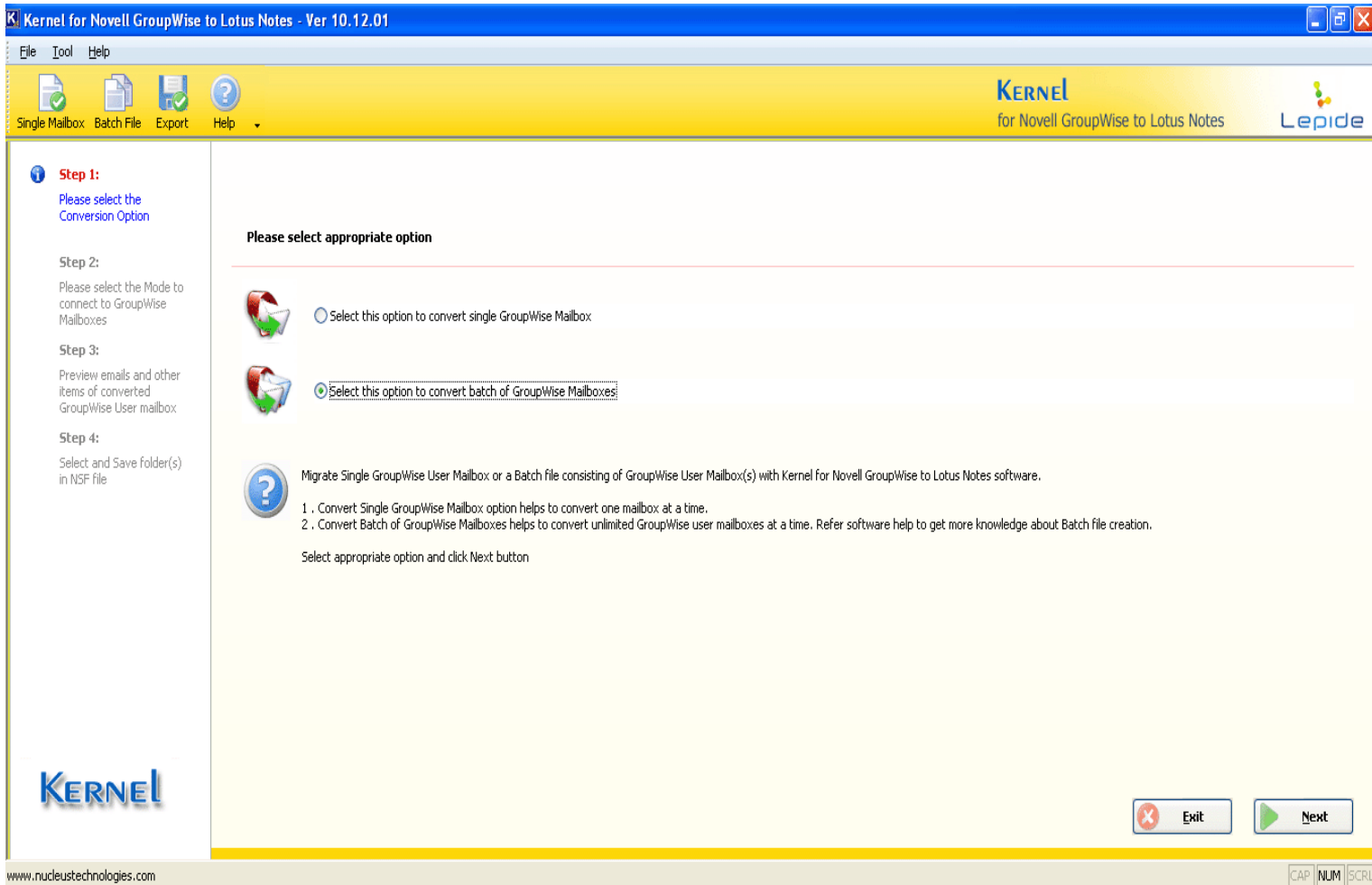


Figure 5.25: Main Window

2. Select the **Select this option to convert batch of GroupWise Mailboxes** option and click the **Next** button. The 'Open' dialog gets displayed:

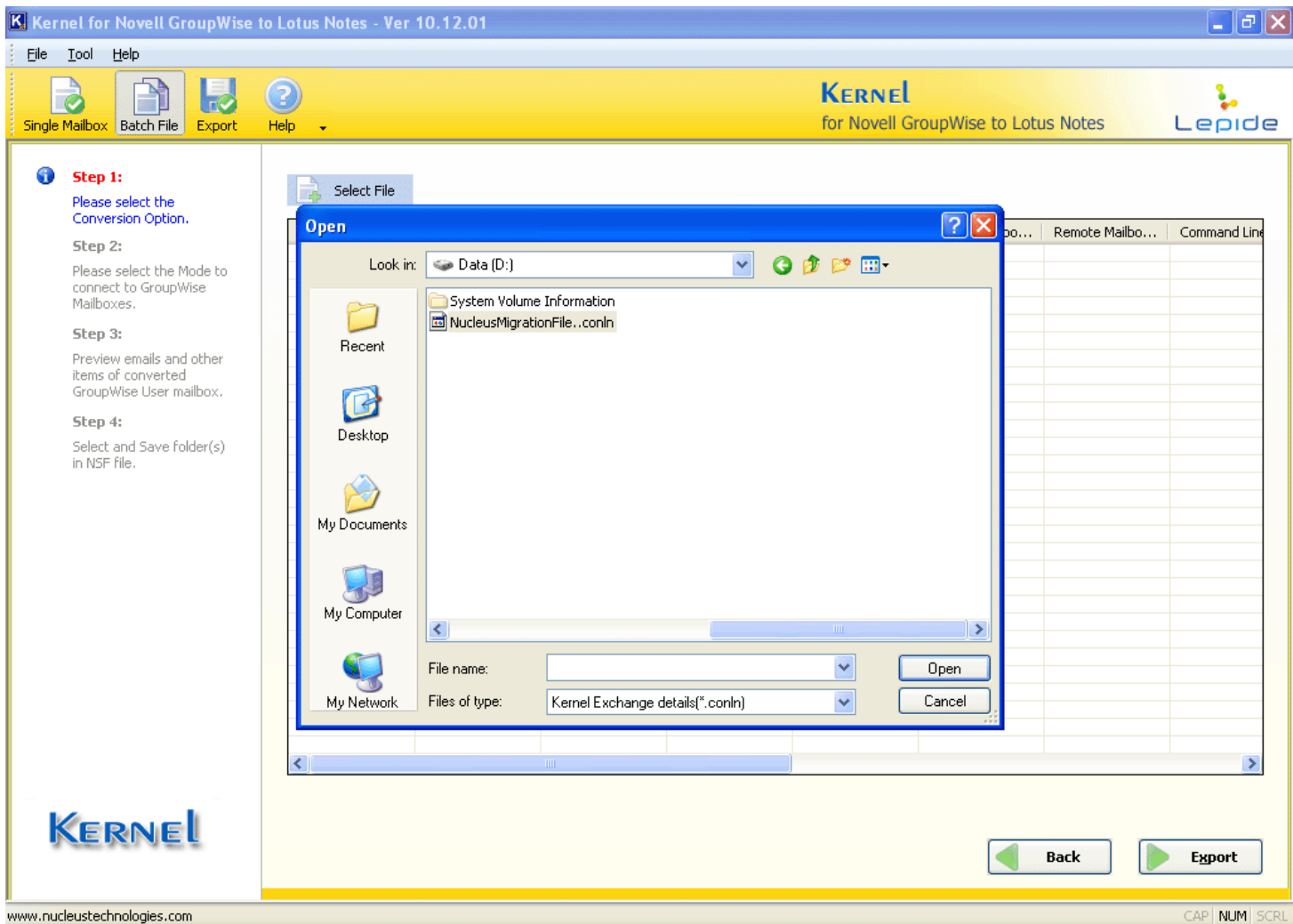


Figure 5.26: Opening CONLN file

3. Select the CONLN batch file and click the **Open** button. The software displays the enlisted GroupWise mailbox details in the following way:

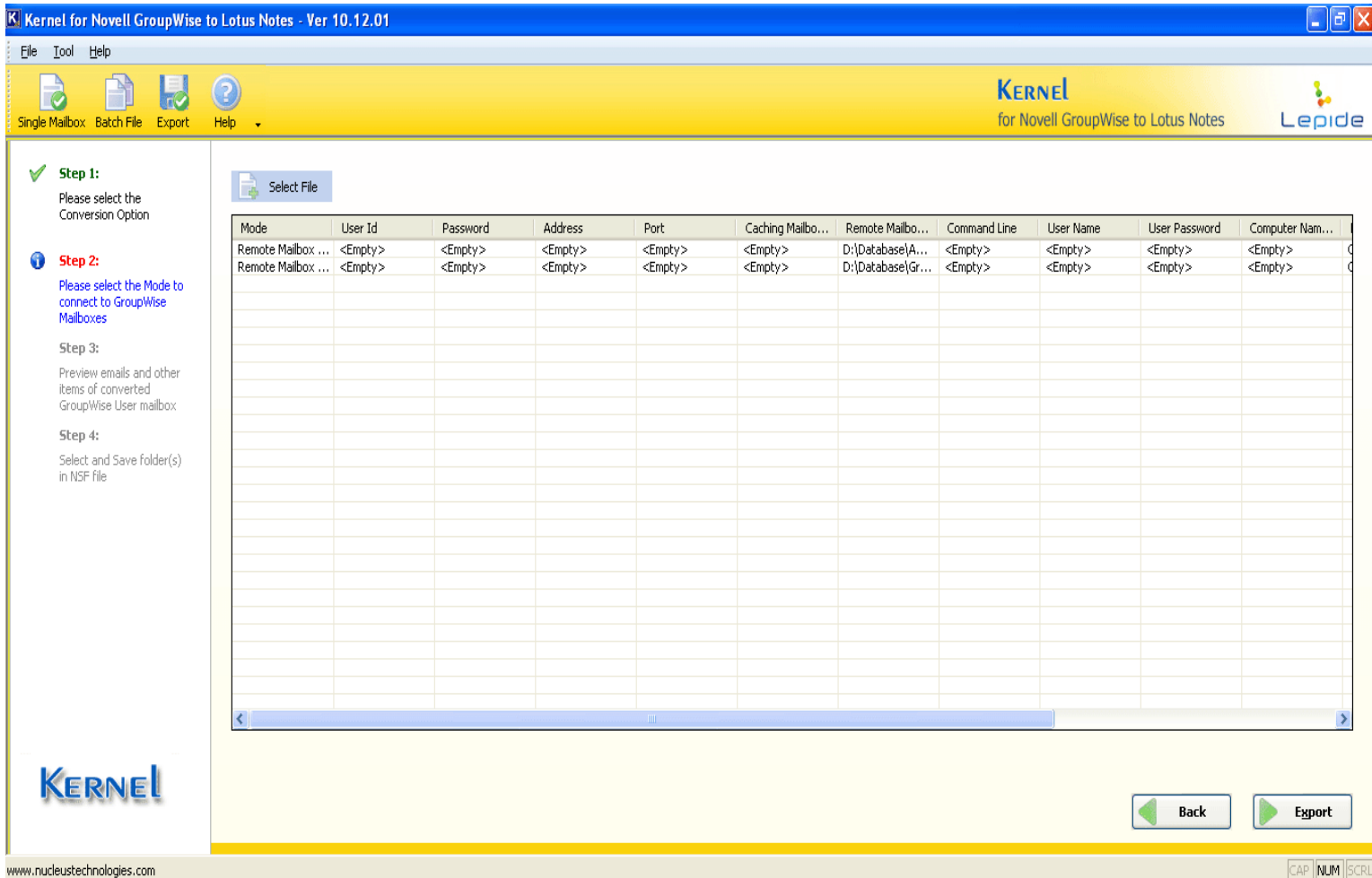



Figure 5.27: CONLN file listed

- Click the **Export** button to perform migration of multiple GroupWise mailboxes to NSF file format. After this, Kernel for Novell GroupWise to Lotus Notes software initiates the saving process of Novell GroupWise user mailboxes and saves the converted mailbox items at a user-defined save location.

 To get a fair idea of working of converting batch of GroupWise Mailboxes, refer to Convert Multiple GroupWise Mailboxes section of Kernel for Novell GroupWise to Lotus Notes Help manual

6. Advanced Options to ease Migration

New Advance Options added in Kernel for Novell GroupWise to Lotus Notes software are provided to ease the task of email migration from Novell GroupWise mailboxes to NSF files.

To view and implement advance options select Advance Options from Tool menu:

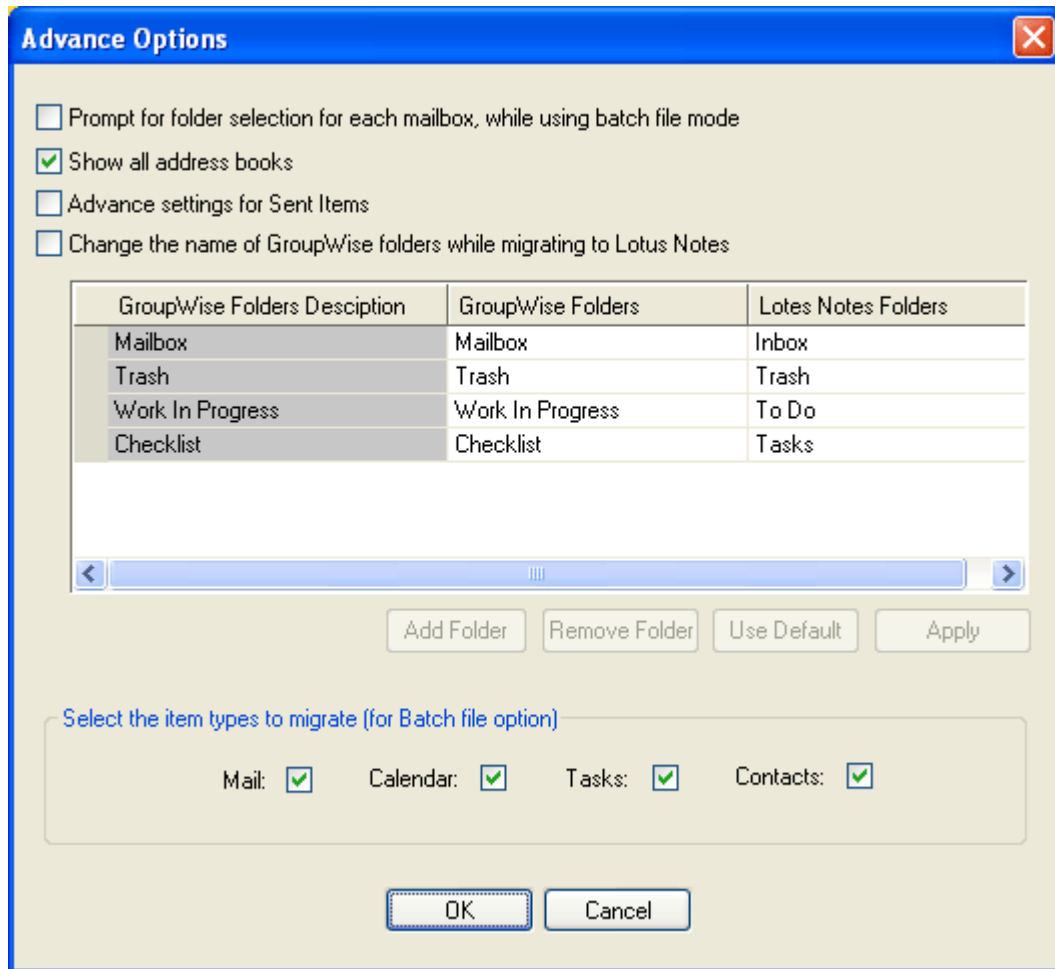


Figure 5.28: Advance Options dialog

Prompt for folder selection for each mailbox, while using batch file mode- Selecting this option, you can select required folders for saving after you performed migration with Kernel batch file of unlimited mailboxes in one go. This option allows you to activate or deactivate this prompt before you start performing batch file migration:

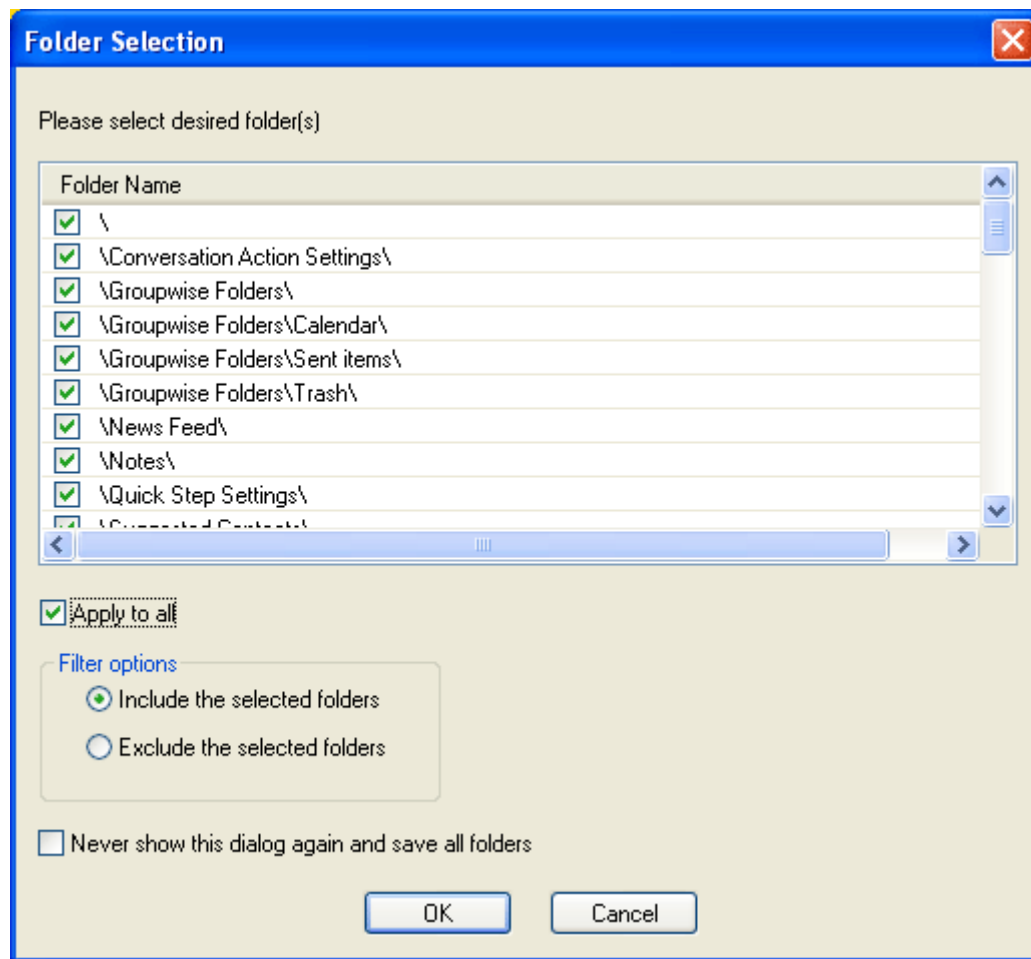


Figure 5.29: Folder Selection dialog

The **Folder Selection** dialog appears during the batch of mailboxes migration process, when a user selects **Prompt for folder selection for each mailbox, while using batch file mode** option.

Show all address books- Select this option to view all the address book(s) of GroupWise mailbox during mailbox preview prior to saving the items.

Advance settings for Sent Items- Select this option to activate advance settings for Sent Items. In case, Sent Items folder emails are listed and converted slowly, then selecting this option will make the process faster.

Change name of GroupWise folders while migrating Lotus Notes: This option will allow you to change the folder names of GroupWise mailbox while migrating to Lotus Notes. Selecting this option will allow you to activate the section where Add Folder, Remove Folder, Use Default and Apply buttons are listed. Now you can easily alter the folder names of GroupWise mailbox and Lotus Notes file for Novell GroupWise to Lotus Notes migration. To add a folder, click on Add Folder button and it will display the following dialog:

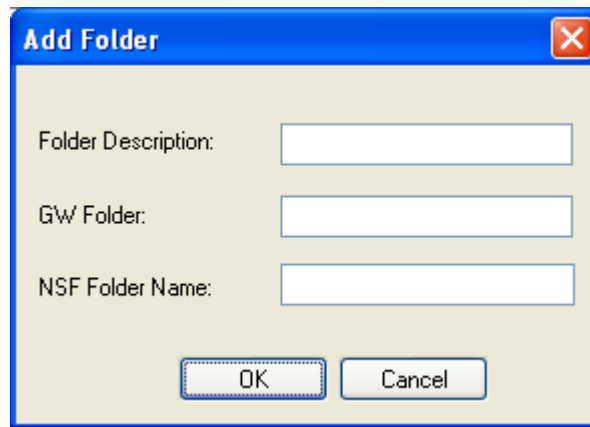


Figure 5.30: Add Folder dialog

Simply type Folder Description, GroupWise Folder (GW Folder) and NSF Folder Name to Add a Folder in the existing list. Similarly, you can remove a Folder by selecting the row or Use Default folder names.

Select the item types to migrate- Select from the items available for Novell GroupWise to Lotus Notes migration. The list of items includes email messages, calendar entries, tasks and contacts.

7. Full Version

Although you can use Kernel for Novell GroupWise to Lotus Notes evaluation version for free and experience the capabilities of the software, there are certain features that are not available in the evaluation version.

7.1 Requirement of Full Version

Kernel for Novell GroupWise to Lotus Notes is available for free trial download. The evaluation version is fully functional and provides the user with a fair idea about the capability and accuracy of the software. The free evaluation version of Kernel for Novell GroupWise to Lotus Notes has certain restrictions. The free version allows you to save only 10 email items per folder.

In order to perform comprehensive Novell GroupWise to Lotus Notes migration and save the entire email items so recovered, you must purchase the Full version of Kernel for Novell GroupWise to Lotus Notes software, which is available at an affordable price.

7.2 Purchasing Full Version

You can buy the full version of Kernel for Novell GroupWise to Lotus Notes online. As soon the purchase transaction gets completed, our sales team will send you an email comprising the URL to download the full version of Kernel for Novell GroupWise to Lotus Notes and activation details of the software.

8. Support

We have an extensive and efficient support system in place to assist our customers with all issues related to using Kernel for Novell GroupWise to Lotus Notes. The software comes with an embedded help manual that can be accessed by clicking **Help→Software Help** in the menu-bar. You can also press the F1 key on the keyboard of your computer to access the embedded help of Kernel for Novell GroupWise to Lotus Notes.

You can access the online help for Kernel for Novell GroupWise to Lotus Notes at <http://www.nucleustechnologies.com/Online-Helps.html>

We also have live support wherein you can chat with our software experts at <http://www.nucleustechnologies.com/Support.html>

To talk on phone with our software experts call:

Help line:

+91-9818725861

1-866-348-7872 (Toll Free for USA/CANADA)

You can also email us about your queries at;

sales@nucleustechnologies.com for Sales

support@nucleustechnologies.com for Support

contact@nucleustechnologies.com for General Queries

9. Legal Notices

This section comprises the legal specification about Kernel for Novell GroupWise to Lotus Notes and the company LEPIDE SOFTWARE PRIVATE LIMITED

9.1 Copyright

LEPIDE SOFTWARE PRIVATE LIMITED, Kernel accompanied user manual and documentation are copyright of LEPIDE SOFTWARE PRIVATE LIMITED, with all rights reserved. Under the copyright laws, this user manual cannot be reproduced in any form without the prior written permission of LEPIDE SOFTWARE PRIVATE LIMITED. No Patent Liability is assumed, however, with respect to the use of the information contained herein.

© LEPIDE SOFTWARE PRIVATE LIMITED. All rights reserved.

9.2 Trademark

Kernel ® is a copyright work of LEPIDE SOFTWARE PRIVATE LIMITED

Windows 95®, Windows 98®, Windows ME®, Windows NT®, Windows 2000 Server®, Windows 2000 Advanced Server®, Windows 2003 Server®, Windows XP®, Windows Vista, MS-DOS are registered trademarks of Microsoft Corporation.

All other brand and product names are trademarks or registered trademarks of their respective companies.

9.3 Disclaimer

The Information contained in this manual, including but not limited to any product specifications, is subject to change without notice. LEPIDE SOFTWARE PRIVATE LIMITED provides no warranty with regard to this manual or any other information contained herein and here by expressly disclaims any implied warranties of merchantability or fitness for any particular purpose with regard to any of the foregoing LEPIDE SOFTWARE PRIVATE LIMITED assumes no liability for any damages incurred directly or indirectly from any technical or typographical errors or omissions contained herein or for discrepancies between the product and the manual. In no event shall LEPIDE SOFTWARE PRIVATE LIMITED, be liable for any incidental, consequential special, or exemplary damages, whether based on tort, contract or otherwise, arising out of or in connection with this manual or any other information contained herein or the use there of.

9.4 License Agreement

Kernel for Novell GroupWise to Lotus Notes Copyright © by LEPIDE SOFTWARE PRIVATE LIMITED

Your Agreement to this License

You should carefully read the following terms and conditions before using, installing or distributing this software, unless you have a different license agreement signed by LEPIDE SOFTWARE PRIVATE LIMITED. The terms and conditions of this License describe the permitted use and users of each

Licensed Copy of Kernel for Novell GroupWise to Lotus Notes. For purposes of this License, if you have a valid license, you have the right to use a single Licensed Copy of Kernel.

Scope of License

Each Licensed Copy of Kernel for Novell GroupWise to Lotus Notes may either be used by a single person or used non-simultaneously by multiple people who use the software personally installed on a single workstation. All rights of any kind in Kernel, which are not expressly granted in this License, are entirely and exclusively reserved to and by LEPIDE SOFTWARE PRIVATE LIMITED. You may not rent, lease, modify, translate, reverse engineer, decompile, disassemble, or create derivative works based on, Kernel, nor permit anyone else to do so. You may not make access to Kernel available to others in connection with a service bureau, application service provider, or similar business, nor permit anyone else to do so.

Warranty Disclaimers and Liability Limitations

Kernel for Novell GroupWise to Lotus Notes, and any and all accompanying software, files, data and materials, are distributed and provided AS IS and with no warranties of any kind, whether expressed or implied. In particular, there is no warranty for the quality of data recovered. You acknowledge that good data processing procedure dictates that any program, including Kernel, must be thoroughly tested with non-critical data before there is any reliance on it, and you hereby assume the entire risk of all use of the copies of Kernel covered by this License. This disclaimer of warranty constitutes an essential part of this License. In addition, in no event does LEPIDE SOFTWARE PRIVATE LIMITED authorize you or anyone else to use Kernel for Novell GroupWise to Lotus Notes in applications or systems where Kernel for Novell GroupWise to Lotus Notes failure to perform can reasonably be expected to result in a significant physical injury, or in loss of life. Any such use is entirely at your own risk, and you agree to hold LEPIDE SOFTWARE PRIVATE LIMITED harmless from any and all claims or losses relating to such unauthorized use.

General

This License is the complete statement of the agreement between the parties on the subject matter, and merges and supersedes all other or prior understandings, purchase orders, agreements and arrangements. This License shall be governed by the laws of the State of Delhi. Exclusive jurisdiction and venue for all matters relating to this License shall be in courts and for a located in the State of Delhi, and you consent to such jurisdiction and venue. There are no third party beneficiaries of any promises, obligations or representations made by LEPIDE SOFTWARE PRIVATE LIMITED herein.

Any waiver by LEPIDE SOFTWARE PRIVATE LIMITED of any violation of this License by you shall not constitute, nor contribute to, a waiver by LEPIDE SOFTWARE PRIVATE LIMITED of any other or future violation of the same provision, or any other provision, of this License.