



Kernel for EML to PST

INSTALLATION AND
CONFIGURATION GUIDE

Table of Contents

1.	Introduction to Kernel for EML to PST	5
1.1	Using this Manual	5
1.2	About Kernel for EML to PST	5
1.3	Salient Features	6
2.	Getting Started	8
2.1	Installation Pre-requisites	8
2.2	Downloading Kernel for EML to PST for the First Time	9
2.3	Install Kernel for EML to PST	9
2.4	Start Kernel for EML to PST	9
2.5	Uninstall Kernel for EML to PST	9
3.	Software Interface	10
3.1	Welcome Screen of Kernel for EML to PST	10
3.2	Menu Bar	11
3.3	Tool Bar	13
3.4	Left Pane	13
3.5	Right Pane	14
4.	Using Kernel for EML to PST	16
4.1	Search EML Folder	16
4.2	Convert EML Files to PST Files	22
5.	Download Purchase and Register	36
5.1	Free Trial Download	36
5.2	Purchase & Register	36
5.3	Support	36
6.	Troubleshooting	38
6.1	Common Issues	38
6.2	Frequently Asked Questions	38

7.	Legal Notices	39
7.1	Copyright Notice.....	39
7.2	Trademarks	39
7.3	Disclaimer	39
7.4	License Agreement	40

Table of Figures

Figure 3.1: Welcome Screen of Kernel for EML to PST	11
Figure 3.2: File Menu	12
Figure 3.3: View Menu	12
Figure 3.4: Help Menu.....	13
Figure 3.5: Left Pane	14
Figure 3.6: Right Pane	15
Figure 4.1: Main Screen of Kernel for EML to PST Software	15
Figure 4.2: Search EML Folder Dialog Box	16
Figure 4.3: Browse for EML/EMLX Files	16
Figure 4.4: Provided Destination for Searching.....	17
Figure 4.5: Searched EML/EMLX Files	17
Figure 4.6: Selected EML/EMLX folders after Search Completion	18
Figure 4.7: Preview of Selected EML/EMLX folder.....	19
Figure 4.8: Selected EML/EMLX folder for Conversion.....	20
Figure 4.9: Wizard to Convert all items from EML to PST.....	21
Figure 4.10: Defining the Conversion Rule.....	22
Figure 4.11: Defining 'From' Field	23
Figure 4.12: Defining 'Date' Field	24
Figure 4.13: Saving in newly-created PST File	25
Figure 4.14: Provided path for newly-created PST File	26
Figure 4.15: Saving Process in Progress	26
Figure 4.16: Successful Saving of New PST Files.....	27
Figure 4.17: Saving in already-existing PST File	28
Figure 4.18: Saving in MSG File.....	29
Figure 4.19: Provided Path for MSG File	30
Figure 4.20: Successful Saving of MSG File	30

1. Introduction to Kernel for EML to PST

Welcome to the user manual of Kernel for EML to PST, an effective and powerful email migration tool to convert EML/EMLX files into MS Outlook PST or MSG file format. This user manual comprises step-by-step guidelines on using Kernel for EML to PST software.

1.1 Using this Manual

This user manual is intended to guide users on using Kernel for EML to PST. We suggest that first time users should read this user manual completely and carefully before proceeding to use the software. However, if you are an experienced user, you can use the Table of Contents to find out information pertaining to the tasks that you need to perform by using Kernel for EML to PST.

You can use the Table of Contents to navigate through different sections of this user manual. The Table of Contents enlists all the sections contained within this user manual in chronological order. This user manual comprises following sections:

- Introduction
- Getting Started
- Software Interface
- Using Kernel for EML to PST
- Full Version
- Support
- Troubleshooting
- Legal Notice

1.2 About Kernel for EML to PST

Kernel for EML to PST is an advanced and professional email migration software that facilitates migrating EML/EMLX files created with numerous email clients including AppleMail, Thunderbird, Windows Live Mail, and Microsoft Outlook Express into easily accessible Microsoft Outlook .PST or .MSG file formats. Enriched with powerful email migration algorithms, Kernel for EML to PST software efficiently converts EML/EMLX files to PST or MSG files.

Using Kernel for EML to PST, all the mailbox folders contained within the EML/EMLX files including Inbox, email attachments, sent items, drafts, junk folder, deleted items folder, etc. are accurately converted into PST or MSG format. While performing the email migration, the software preserves the original EML/EMLX file data along with its structure and properties. The software facilitates searching EML/EMLX files from the specified drive or any other location. The software facilitates preview of EML/EMLX file item before saving and allows saving converted emails in folder hierarchy.

Kernel for EML to PST owns a '**Search**' facility by which the users can search for EML/EMLX file folders in the selected disks or folders of the system. EML/EMLX file folders of the system, along with their content are displayed after the search. The user can convert the entire emails of the selected folders to PST or can convert only the required emails to PST. For this purpose, this tool has been provided with a user-defined filtering option that facilitates filtering messages on the basis of From, To, Subject and Date fields. Additionally, the user can opt to filter the emails containing attachments. Furthermore, the tool allows saving converted email data in PST or MSG format. While saving the converted email data in PST format, user can either create a new PST file or can save in an existing PST file.

Offered easy-to-use, self-descriptive, user-friendly graphical user interface of Kernel for EML to PST makes the entire email migration process a much easier task even for novice users. Available free to download trial version lets users evaluate its capabilities before purchasing the full licensed version.

1.3 Salient Features

Salient features of Kernel for EML to PST include:

- Efficiently converts EML/EMLX files to PST or MSG file format
- Accurately converts emails, attachments, sent items, deleted items folder, etc. from EML/EMLX files to MS Outlook PST or MSG files
- Allows filtering EML/EMLX files on the basis of To, From, Subject, and Date fields
- Facilitates filtering and saving specifically those EML/EMLX files containing attachments
- Supports conversion of Unicode characters
- Allows saving converted emails in folder hierarchy
- Displays preview of EML/EMLX file email items before saving them to either PST or MSG file formats
- While saving in PST file format, the tool offers option to save the converted file either into a newly-created PST file or an already-existing PST file
- Keeps the original structure, formatting and properties of the mailbox items unhampered
- Designed in an extremely user-friendly, self-descriptive, highly-interactive GUI

- Supports conversion of EML/EMLX files created with Apple Mail, Windows Live Mail, Microsoft Outlook Express and Mozilla Thunderbird email clients
- Works well with MS Outlook 2000, 2002, 2003, 2007, 2010, 2013, 2016 and 2019 versions
- Works well with Windows XP, Windows Vista, Windows 7, Windows 8, Windows Server 2000, Windows Server 2003, Windows Server 2008, Windows Server 2008 R2, Windows Server 2013 and Windows Server 2016 Operating System platforms
- Available as a free to download evaluation version
- Offers round-the-clock technical support

2. Getting Started

Now that you have understood the features and potential of Kernel for EML to PST, you are ready to get a hand on experience of the software. To start converting EML/EMLX files into PST or MSG format, you will first need to download and install this software.

It is strongly recommended that before installing Kernel for EML to PST, you should go through the installation pre-requisites for the software to ensure that your computer is appropriately configured to run the software.

2.1 Installation Pre-requisites

Following are the basic system pre-requisites in order to perform successful conversion of EML/EMLX files to MS Outlook PST or MSG files using Kernel for EML to PST software:

Minimum System Requirements:

- Pentium Class Processor
- 64 MB RAM (128 MB Recommended)
- 10 MB for Software installation
- Disk Space - Enough space to save the results

Supported MS Windows Operating System (Both 32-bit and 64-bit): Windows XP, Windows Vista, Windows 7, Windows 8, Windows Server 2000, Windows Server 2003, Windows Server 2008, Windows Server 2008 R2, Windows Server 2012 and Windows Server 2016.


Supported MS Outlook versions (Both 32-bit and 64-bit): MS Outlook 2000, MS Outlook 2002, MS Outlook 2003, MS Outlook 2007, MS Outlook 2010, MS Outlook 2013, MS Outlook 2016 and MS Outlook 2019.

Supported Email Clients: Apple Mail (EMLX), Thunderbird (EML), Windows Live Mail (EML), Microsoft Outlook Express (EML)

2.2 Downloading Kernel for EML to PST for the First Time

After checking your computer with the prescribed system requirements for Kernel for EML to PST, you can download the evaluation version of the software on your computer using the following link:

<https://www.nucleustechnologies.com/eml-to-pst.html>

 The free trial version of Kernel for EML to PST accurately converts EML/EMLX files to PST or MSG file format but allows saving only 5 EML/EMLX files per folder. To save entire converted items, purchase the full version of the software.

2.3 Install Kernel for EML to PST

To install Kernel for EML to PST onto your computer system, perform the following steps:

1. First make sure that the host computer meets the entire basic system requirements and has sufficient memory available.
2. Download Kernel for EML to PST software from the website:
<https://www.nucleustechnologies.com/eml-to-pst.html>
3. Double-click the Kernel for EML to PST software Installer .exe file.
4. Follow the on-screen instructions. The setup install completion screen will be displayed.
5. Click Finish, the main window of the Kernel for EML to PST software will be launched.

2.4 Start Kernel for EML to PST

To start **Kernel for EML to PST** software:

Click **Start → All Programs → Kernel for EML to PST → Kernel for EML to PST**

Alternatively, you can launch **Kernel for EML to PST** by double-clicking the shortcut icon available on the desktop or the Quick Launch icon.

2.5 Uninstall Kernel for EML to PST

Kernel for EML to PST can be uninstalled from the computer system in two ways:

- From the Windows Start menu
- From the Control Panel

Uninstall from the Windows Start Menu:

1. Click the **Start** button from the Windows menu.
2. Click **All Programs > Kernel for EML to PST > Uninstall Kernel for EML to PST**. A warning message before uninstalling the software will be displayed on the screen.
3. Click **Yes** to uninstall the software.

Kernel for EML to PST will be successfully uninstalled from your computer system.

Uninstall from the Control Panel:

1. Click the **Start** menu > **Control Panel** and then double-click the **Add or Remove Programs** icon.
2. Select the **Kernel for EML to PST** software and click **Remove**. A warning message before uninstalling the software will be displayed on the screen.
3. Click **Yes** to uninstall the software.

Kernel for EML to PST will be successfully uninstalled from your computer system.

3. Software Interface

Now that Kernel for EML to PST has been installed on your computer, you can start using the software after getting acquainted with the software interface.

3.1 Welcome Screen of Kernel for EML to PST

Kernel for EML to PST offers user-friendly and self-descriptive graphical user interface. When the software is launched, following main screen of the software appears:

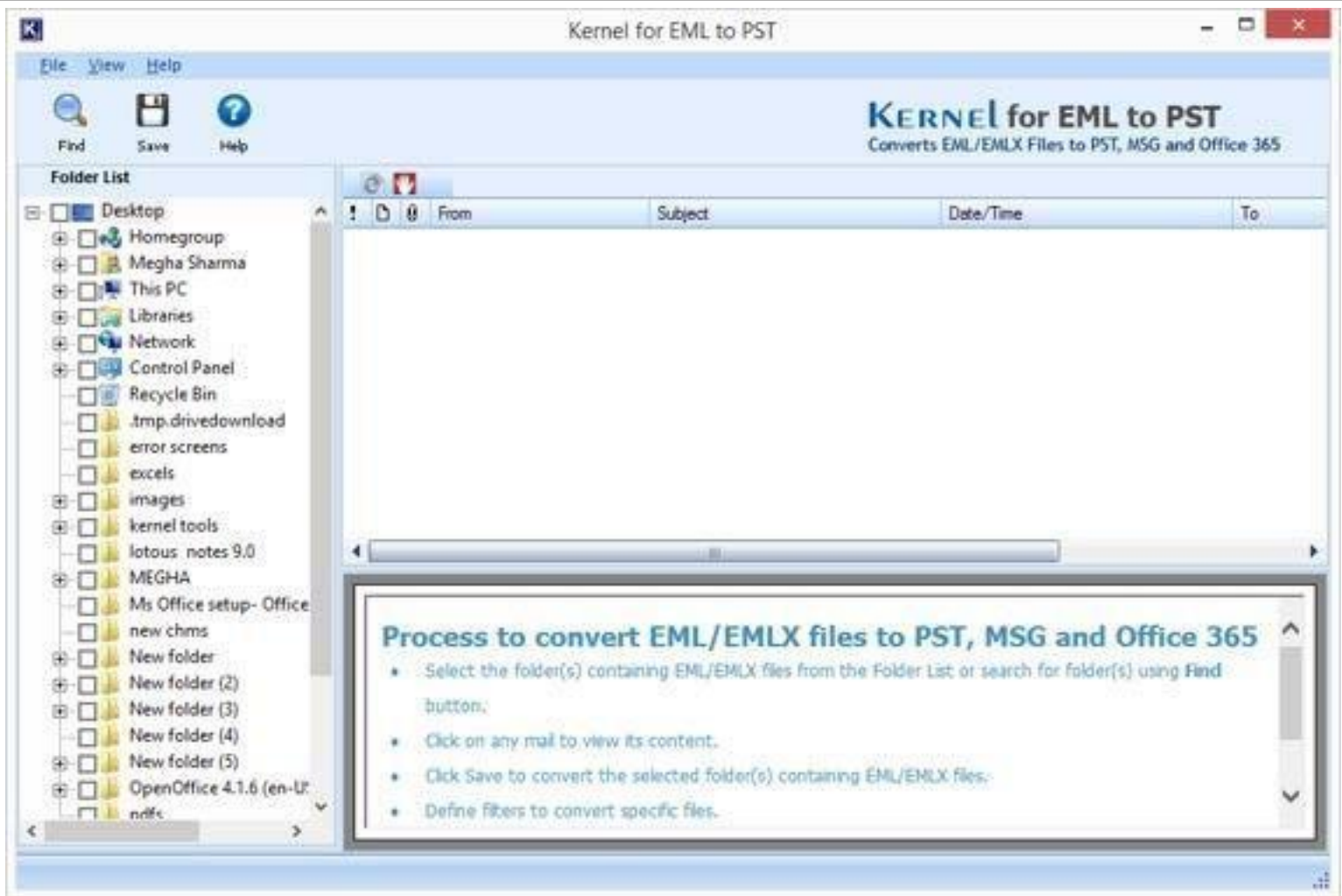


Figure 3.1: Welcome Screen of Kernel for EML to PST

3.2 Menu Bar

The Menu bar of Kernel for EML to PST comprises three menus:

- File Menu
- View Menu
- Help Menu

File Menu

The **File** menu of Kernel for EML to PST appears as:

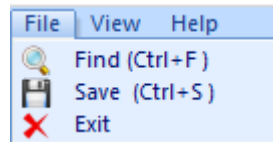


Figure 3.2: File Menu

The options enlisted in the **File** menu are:

Option	Description
Find	Click to search for EML/EMLX folder(s) in the system
Save	Click to save the converted files in PST or MSG file format
Exit	Click to exit from the application

View Menu

The **View** menu of Kernel for EML to PST software appears as:

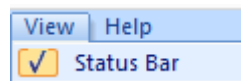


Figure 3.3: View Menu

The option enlisted in the **View** menu is:

Option	Description
Status Bar	Selecting this option displays the status bar

Help Menu

Help menu of Kernel for EML to PST software appears as:

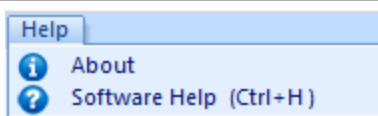




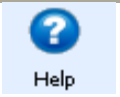
Figure 3.4: Help Menu

The options enlisted in the **Help** menu are:

Option	Description
About	Click to view basic information about the software
Software Help	Click to view the help file of the software

3.3 Tool Bar

The Tool Bar of Kernel for EML to PST displays three buttons: **Find**, **Save** and **Help**. Almost all functions of Kernel for EML to PST can be performed using the tool bar. It offers the convenience of being user-friendly. The buttons on the tool bar are:

Button	Description
 Find	Option to search EML/EMLX folder(s) in the system
 Save	Option to save the converted files in PST or MSG file format
 Help	Option to open the help manual of the software

3.4 Left Pane

The left pane of the Kernel for EML to PST displays the Folder List of the system. It displays the disks and folders of the system in the hierarchical order. The user can select a disk or folder in the Folder List, just by checking the checkbox on its left.

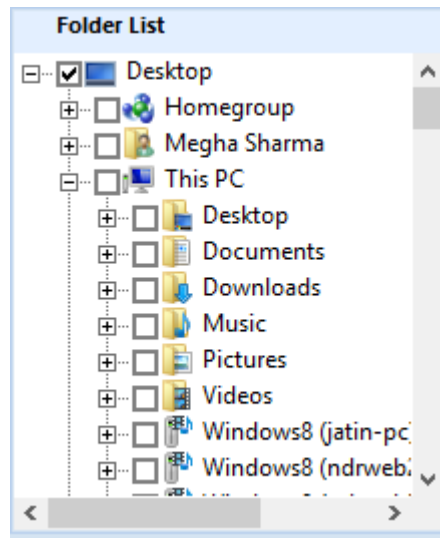


Figure 3.5: Left Pane

3.5 Right Pane

The right pane of the Kernel for EML to PST is similar to an email box. It displays the EML/EMLX files of an EML/EMLX folder.

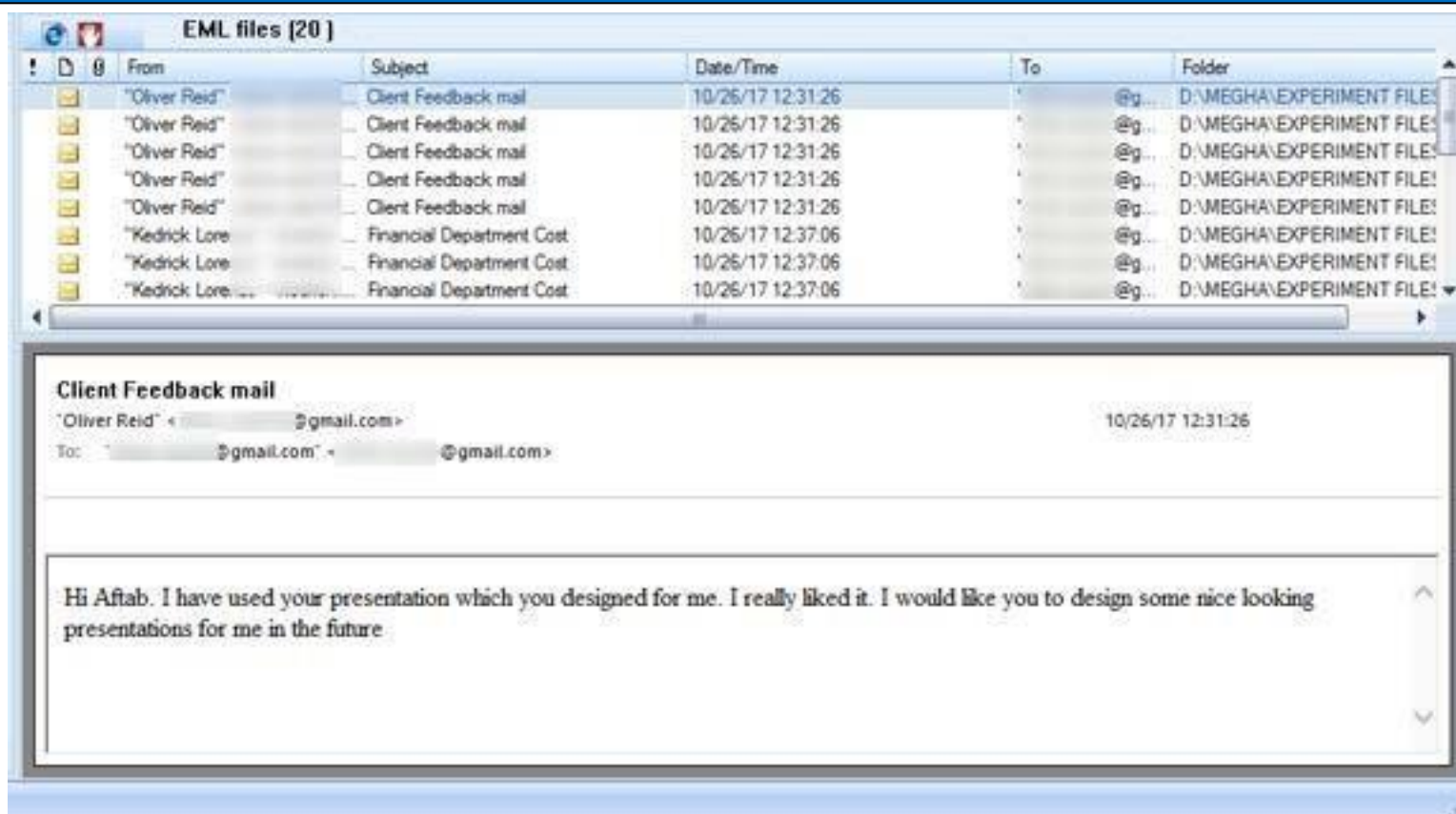


Figure 3.6: Right Pane

4. Using Kernel for EML to PST

4.1 Search EML Folder

Kernel for EML to PST accesses the system and searches out the EML/EMLX folders of the system very efficiently. You can use the **Find** option of the software to search for the EML/EMLX folders of the system. Follow the steps given below to search for EML folders:

1. Launch **Kernel for EML to PST**. The welcome screen of the software appears; go to **File > Find**, click the **Find** button on the Tool bar or press **Ctrl + F**.

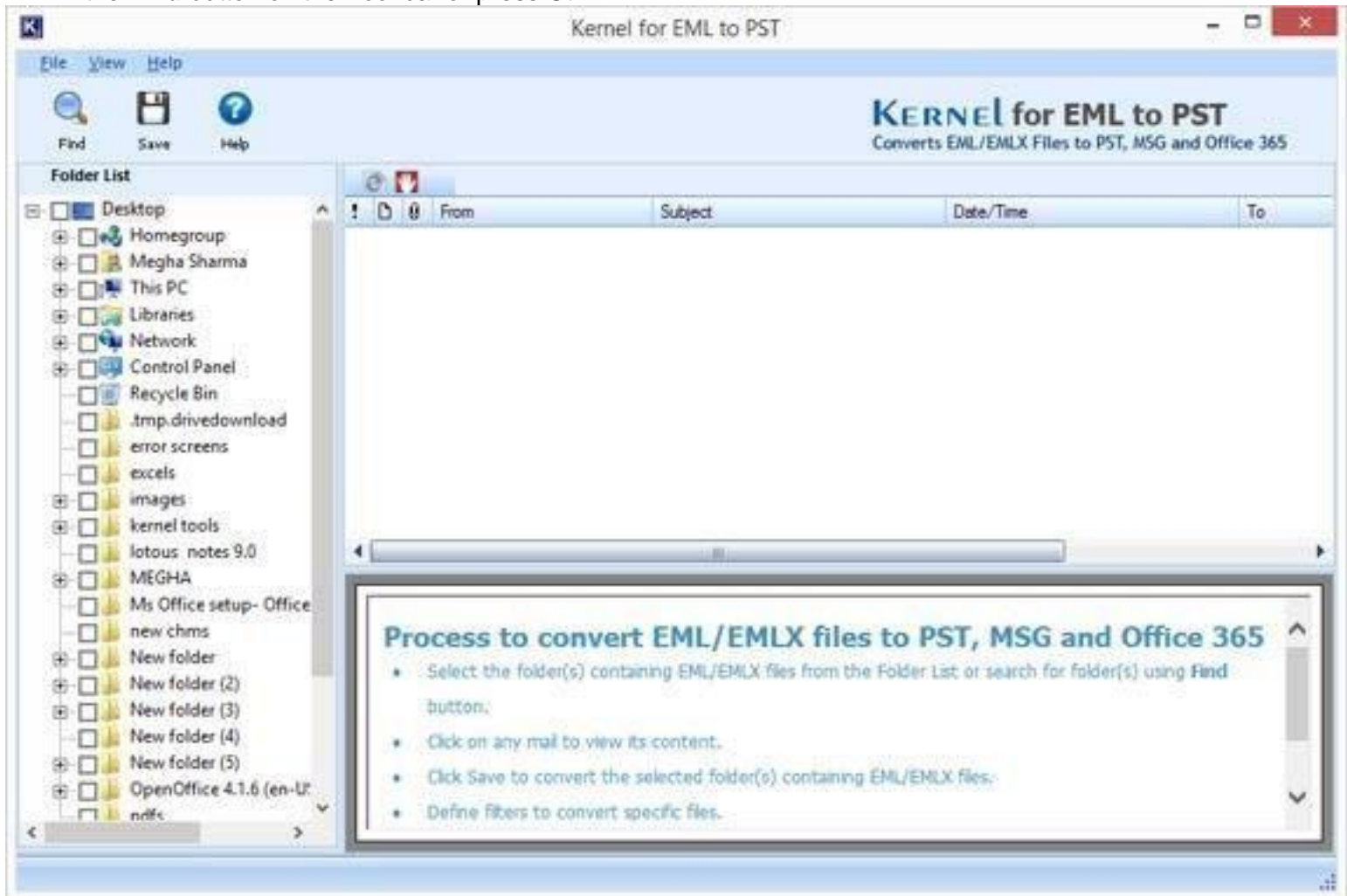


Figure 4.1: Main Screen of Kernel for EML to PST Software

2. The **Search EML Folder** dialog box appears; click the **Browse** button.

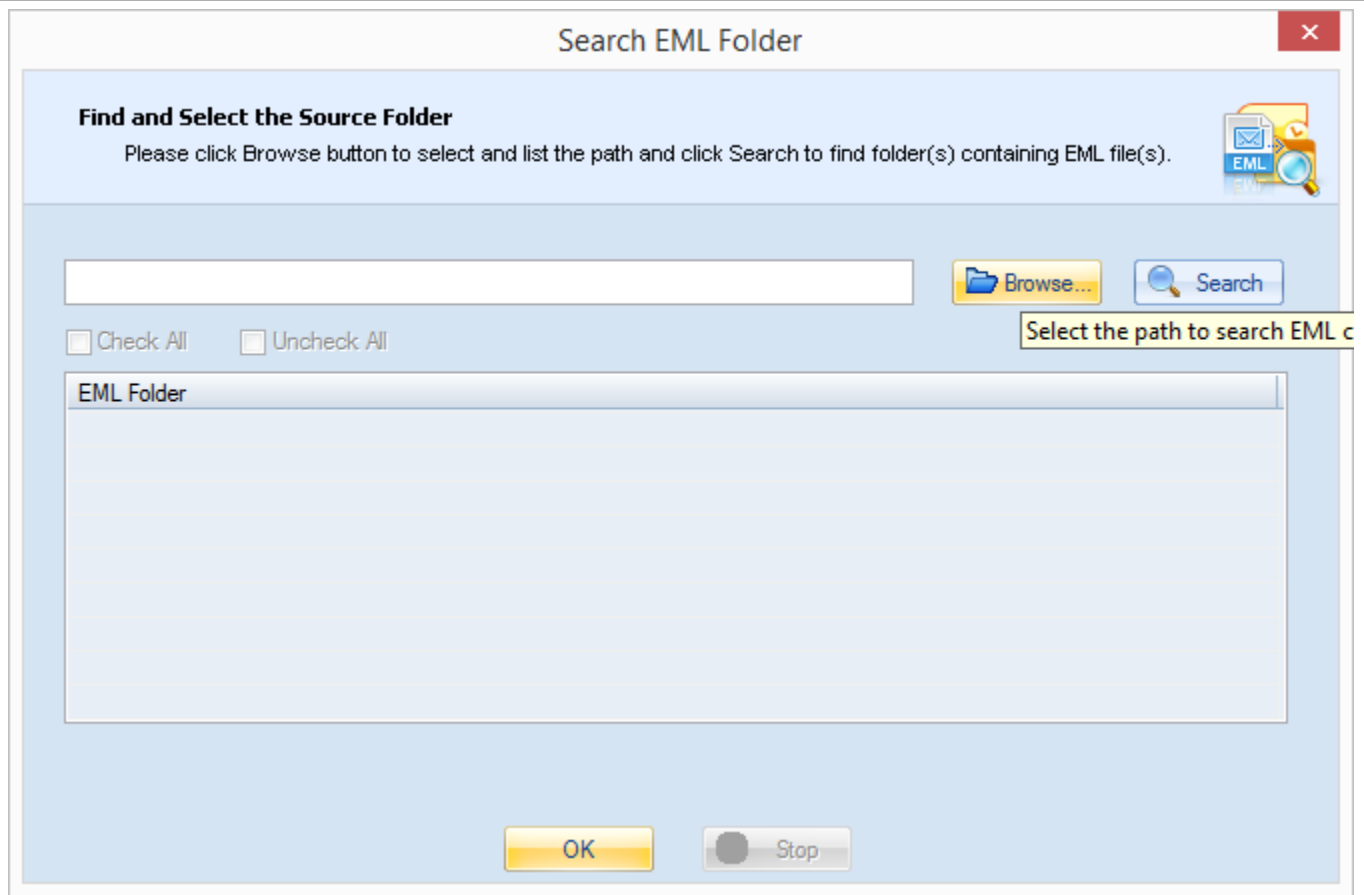


Figure 4.2: Search EML Folder Dialog Box

3. The **Browse for Folder** dialog box appears. It displays the directory structure of the system; select the EML/EMLX folder path and click **OK**.

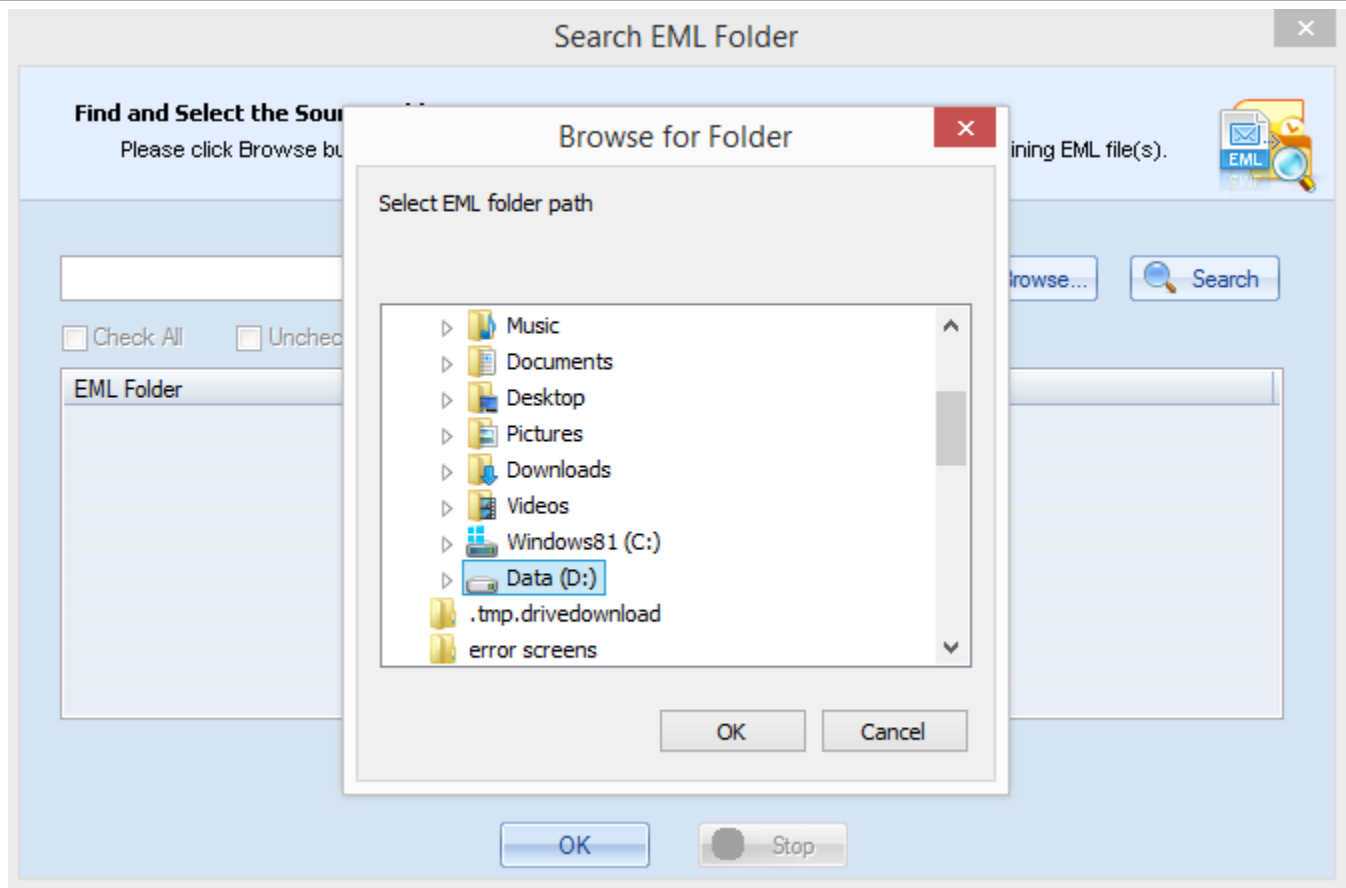


Figure 4.3: Browse for EML/EMLX Files

4. The folder path appears in the File Requester dialog box; click **Search**.

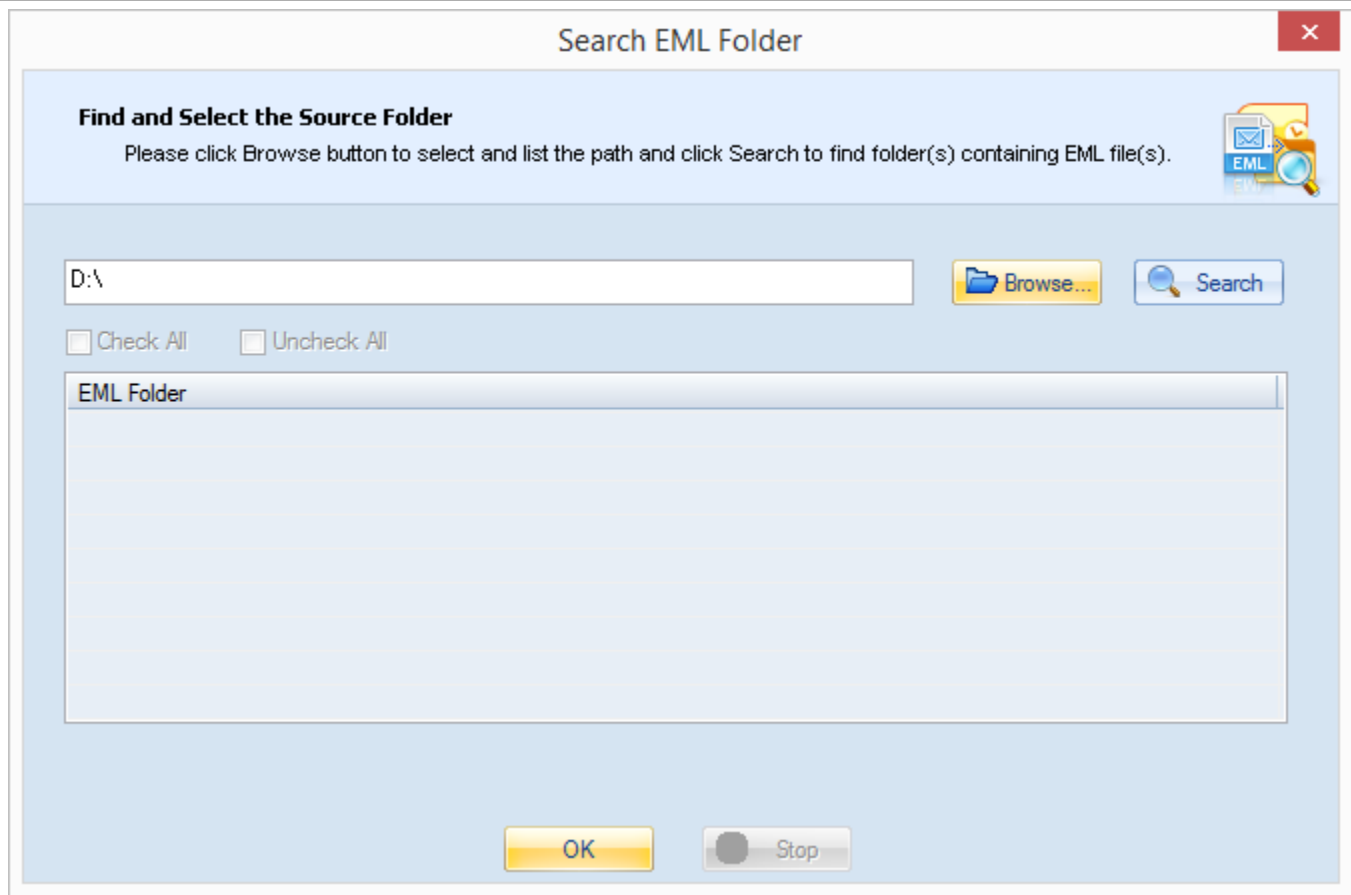


Figure 4.4: Provided Destination for Searching

5. Select the required folders (by checking the checkboxes) when the EML/EMLX folder(s) get listed under the column **EML Folder**.

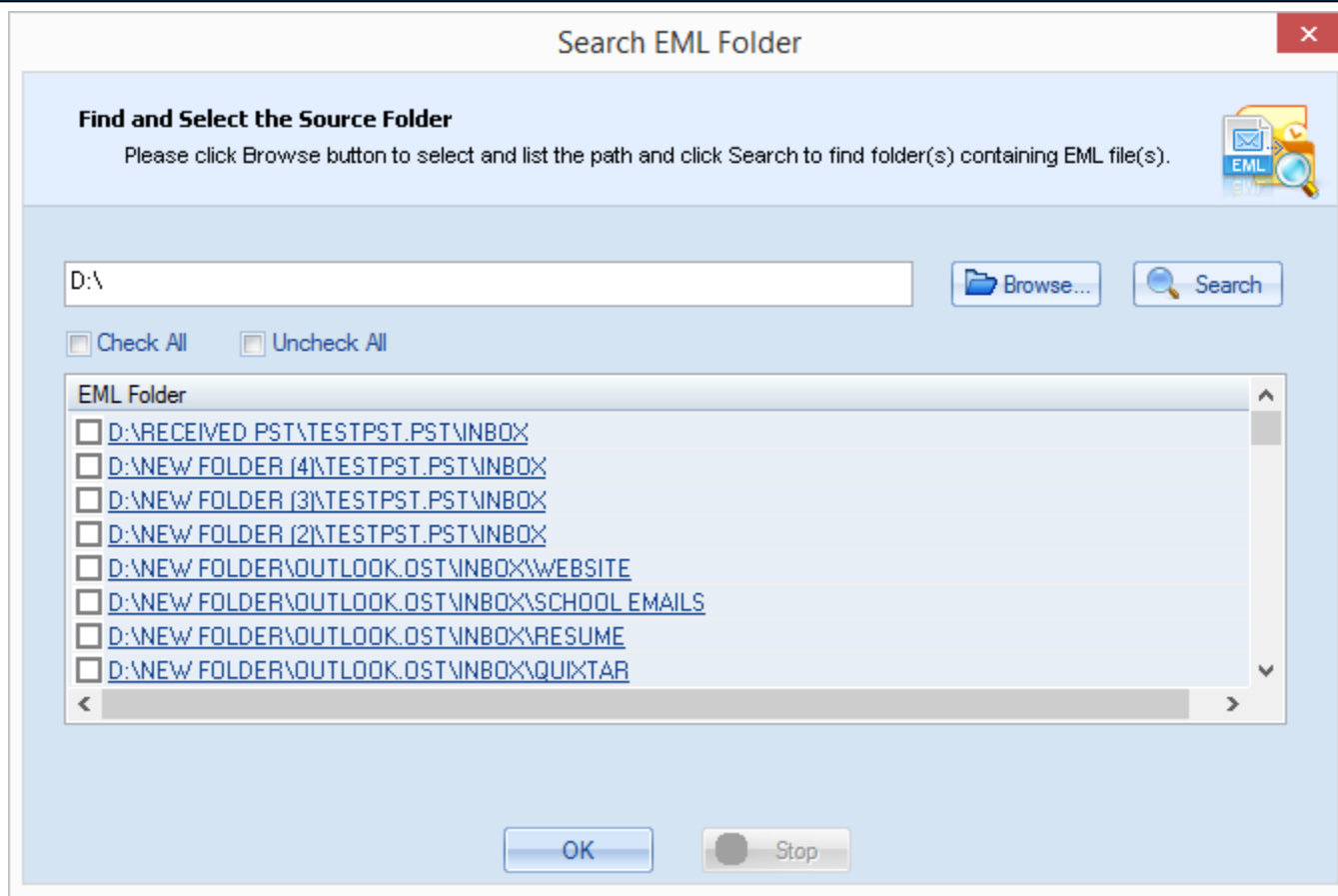


Figure 4.5: Searched EML/EMLX Files

6. The folder(s) selected by the user (in the **Search EML Folder** dialog box) automatically get selected in the **Folder List** > Click **OK**.

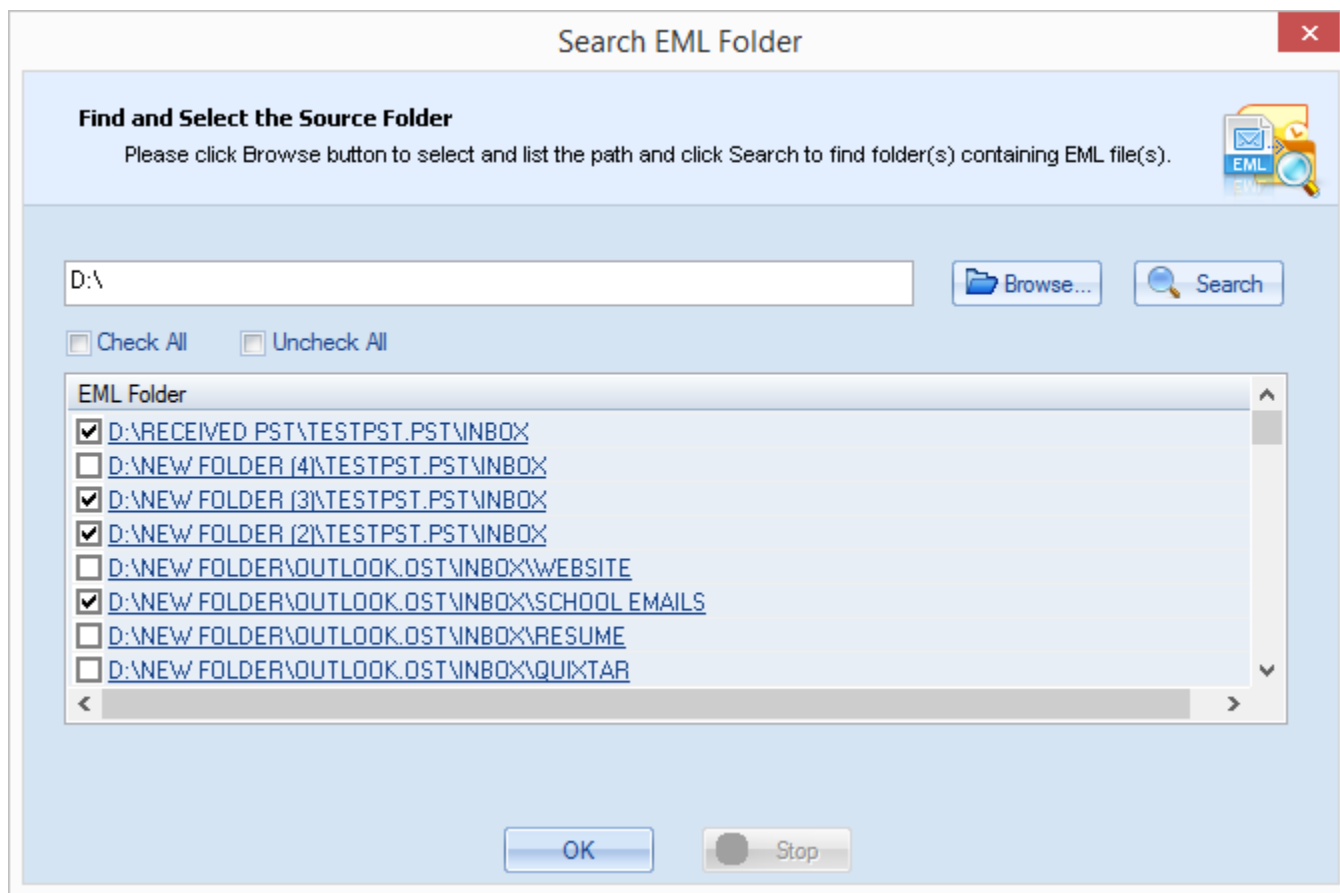


Figure 4.6: Selected EML/EMLX folders after Search Completion

On selecting an EML/EMLX folder in the **Folder List**, its name and number of items appears on the toolbar, and its items are listed in the message list. To view the content of an email item, just select the item from the message list; its content will be displayed in the preview pane.



Figure 4.7: Preview of Selected EML/EMLX folder

4.2 Convert EML Files to PST Files

To convert EML/EMLX files to PST files, you need to select the EML/EMLX folders in the **Folder List**. It is not always necessary to convert all the items to PST files. You can filter the EML/EMLX files as per requirement and convert only the selected items to PST files. Follow the steps given below to filter the EML files and convert them to PST files:

1. To convert the EML/EMLX files to PST files, select the EML/EMLX folder(s) in the **Folder List** and go to **File > Save**, click the **Save** button on the Tool bar or press **Ctrl + S**.



Figure 4.8: Selected EML/EMLX folder for Conversion

2. The **Conversion Options** wizard appears. Here, user can either select **Convert all items** option (To convert all EML/EMLX items to PST files) or can select **Define conversion rule** option (To convert only the selected EML/EMLX items to PST files).

Conversion Options

Conversion Rule
Please define which EML/EMLX file(s) will be converted.

Define Filter Criteria for Conversion

☒ Convert all items

☐ Define conversion rule

Where: Where Contains Add

Filter items that match these criteria :

Field	Condition	Value
-------	-----------	-------

☐ Attachments Remove

Next > Cancel

Figure 4.9: Wizard to Convert all items from EML to PST

To convert only the selected EML/EMLX items to PST files, Kernel for EML to PST allows filtering EML/EMLX items on the basis of To, From, Subject, and Date fields. Follow the steps given below to filter the EML/EMLX items:

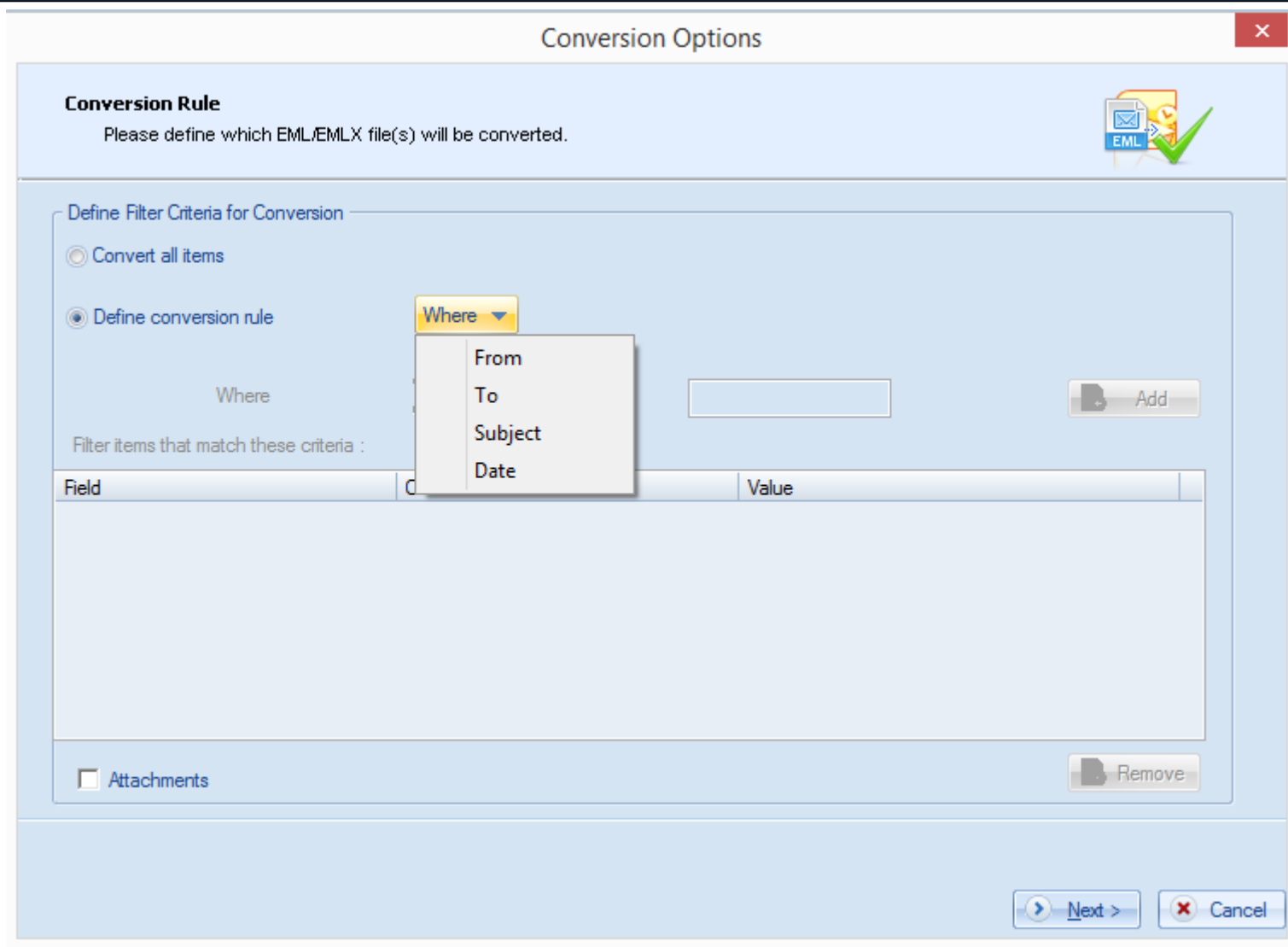


Figure 4.10: Defining the Conversion Rule

From Field: Select **Contains** or **Doesn't contain** in the dropdown menu and enter a search word in the text field.

Conversion Options

Conversion Rule
Please define which EML/EMLX file(s) will be converted.

Define Filter Criteria for Conversion

☐ Convert all items

☒ Define conversion rule

Where: **Where** From: **Contains** administrator **Add**

Filter items that match these criteria :

Field	Condition	Value
-------	-----------	-------

☐ Attachments **Remove**

Next > **Cancel**

Figure 4.11: Defining 'From' Field

Date Field: On selecting **Date** in the **Where** dropdown menu, user needs to enter a '**from**' date and a '**to**' date in the dropdown calendars; the software will search for items within that date range. Finally, click **Add to List**.

Conversion Options

Conversion Rule
Please define which EML/EMLX file(s) will be converted.

Define Filter Criteria for Conversion

☐ Convert all items

☒ Define conversion rule **Where** ▼

Where Date: from **12/ 6/2016** ▼ to **9/11/2019** ▼ **Add**

Filter items that match these criteria :

Field	Condition	Value
Date	In between	from "12/6/2016" to "9/11/2019"
From	Contains	administrator
To	Contains	admin

☐ Attachments **Remove**

Next > **Cancel**

Figure 4.12: Defining 'Date' Field

✎ To remove any of the added filtering criteria, just select the criteria and click the **Remove** button. Check the **Attachments** checkbox to search for files with attachments only.

Finally, click the **Next** button. The '**Select Destination**' dialog box appears offering two options:

- **Save in PST** - To save the file in PST format
- **Save in MSG** - To save the file in MSG format

Saving in newly-created PST File:

To save converted email data in a new PST file, Check the **Save in PST** checkbox > Select the **Create New PST File** checkbox, and click the **Browse** button. Finally, select a new location in the **Browse For Folder** dialog box > click **OK**.

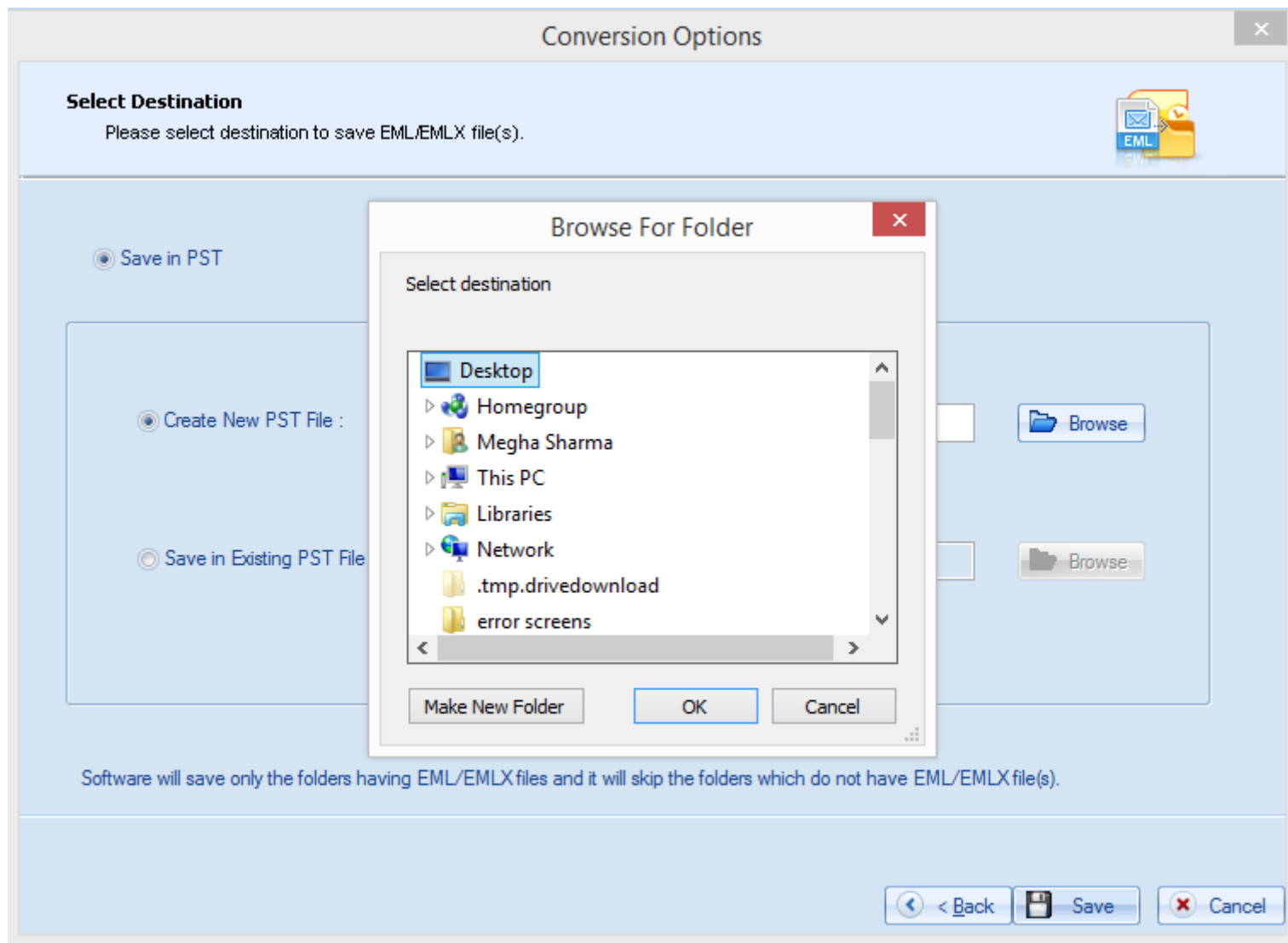


Figure 4.13: Saving in newly-created PST File

As per your selection, the destination path appears in the File Requester dialog box. To save the PST files in the same hierarchical order as the source files, check the **Save in folder hierarchy** checkbox (Unchecking the **Save in folder hierarchy** checkbox means saving the files in a single folder). Finally, click **Save**.

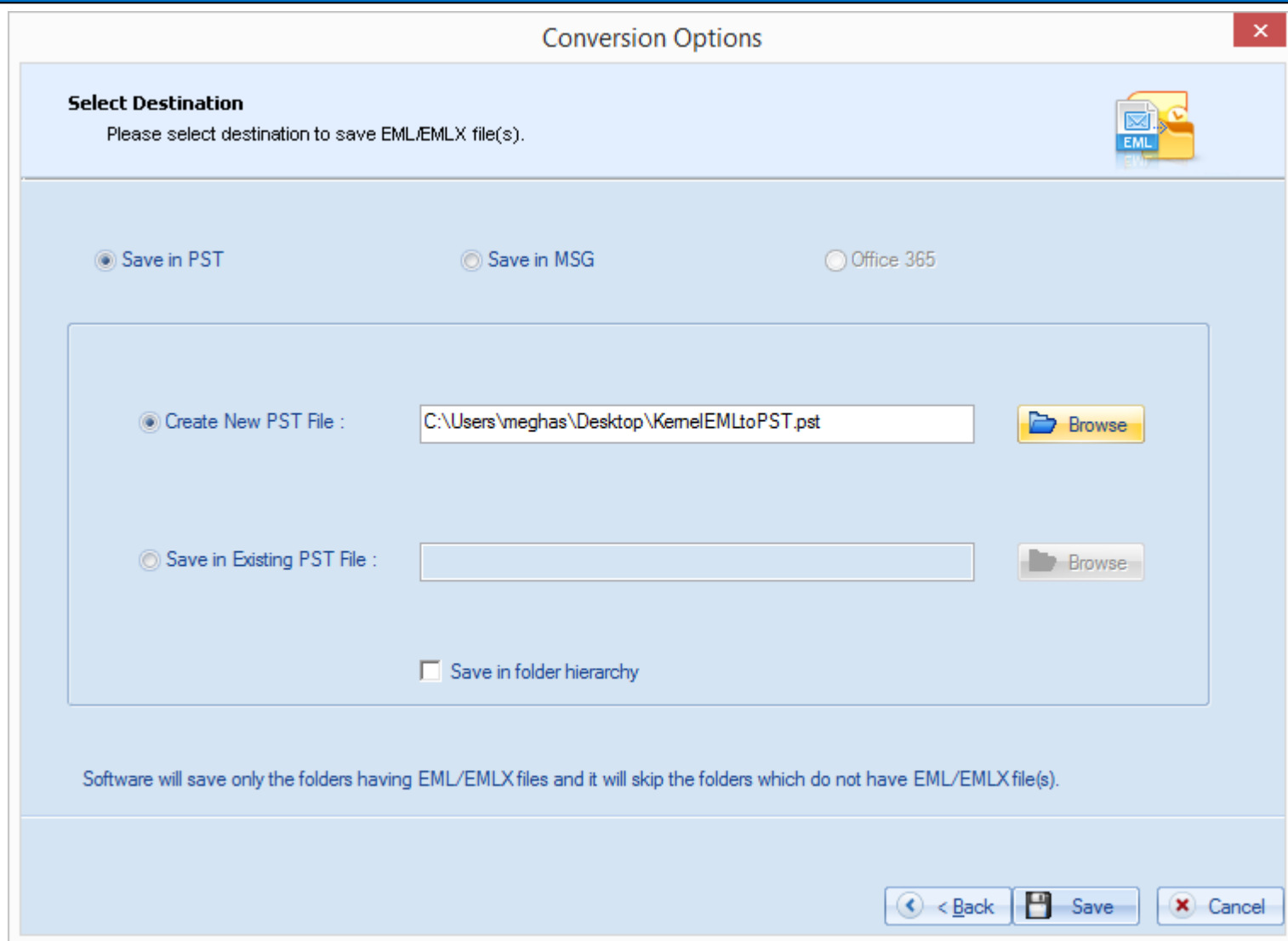


Figure 4.14: Provided path for newly-created PST File

The software performs the saving process as:



Figure 4.15: Saving Process in Progress

The **Saved Files** dialog box appears. It displays the location of the saved files as a link; user can click this link to open the folder and see the files. Otherwise click **OK**.

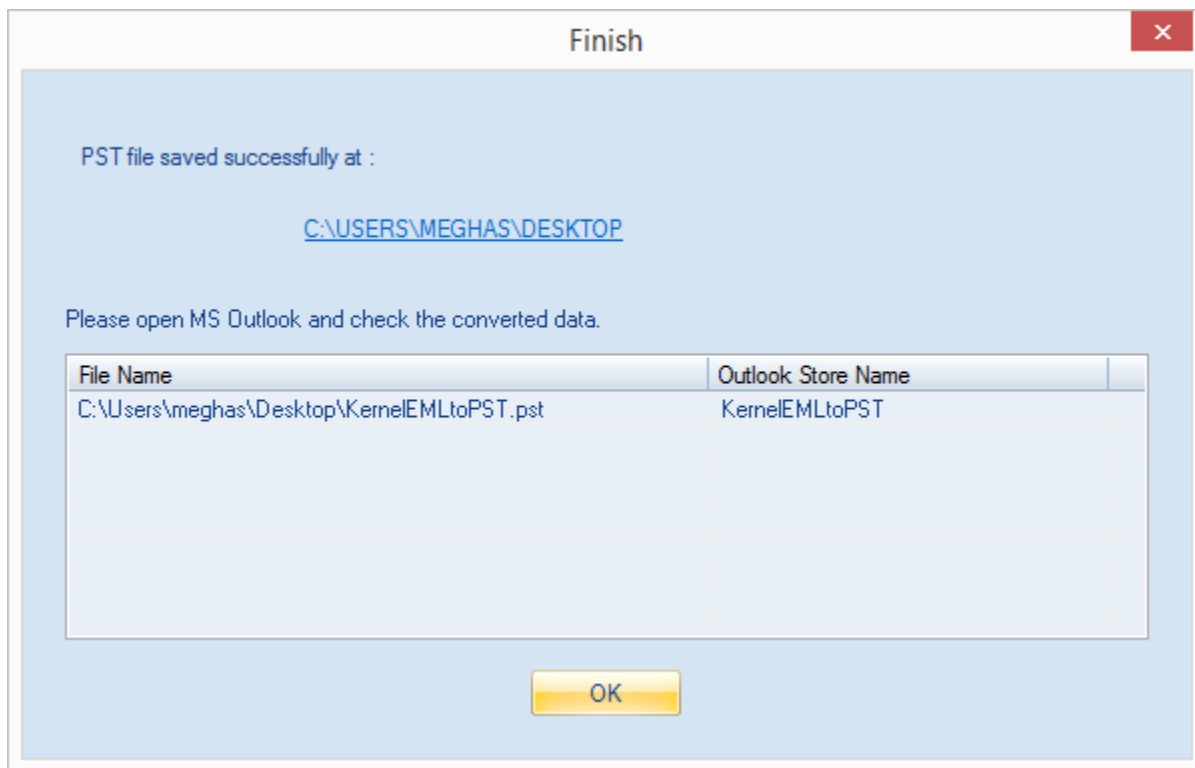


Figure 4.16: Successful Saving of New PST Files

Saving in already-existing PST File:

To save the converted email data in an already-existing PST file, Check the **Save in PST** checkbox > Select the **Save in Existing PST File** checkbox > Click the **Browse** button. Finally, select an existing PST file in the **Select existing PST file** dialog box > Click **Open**.

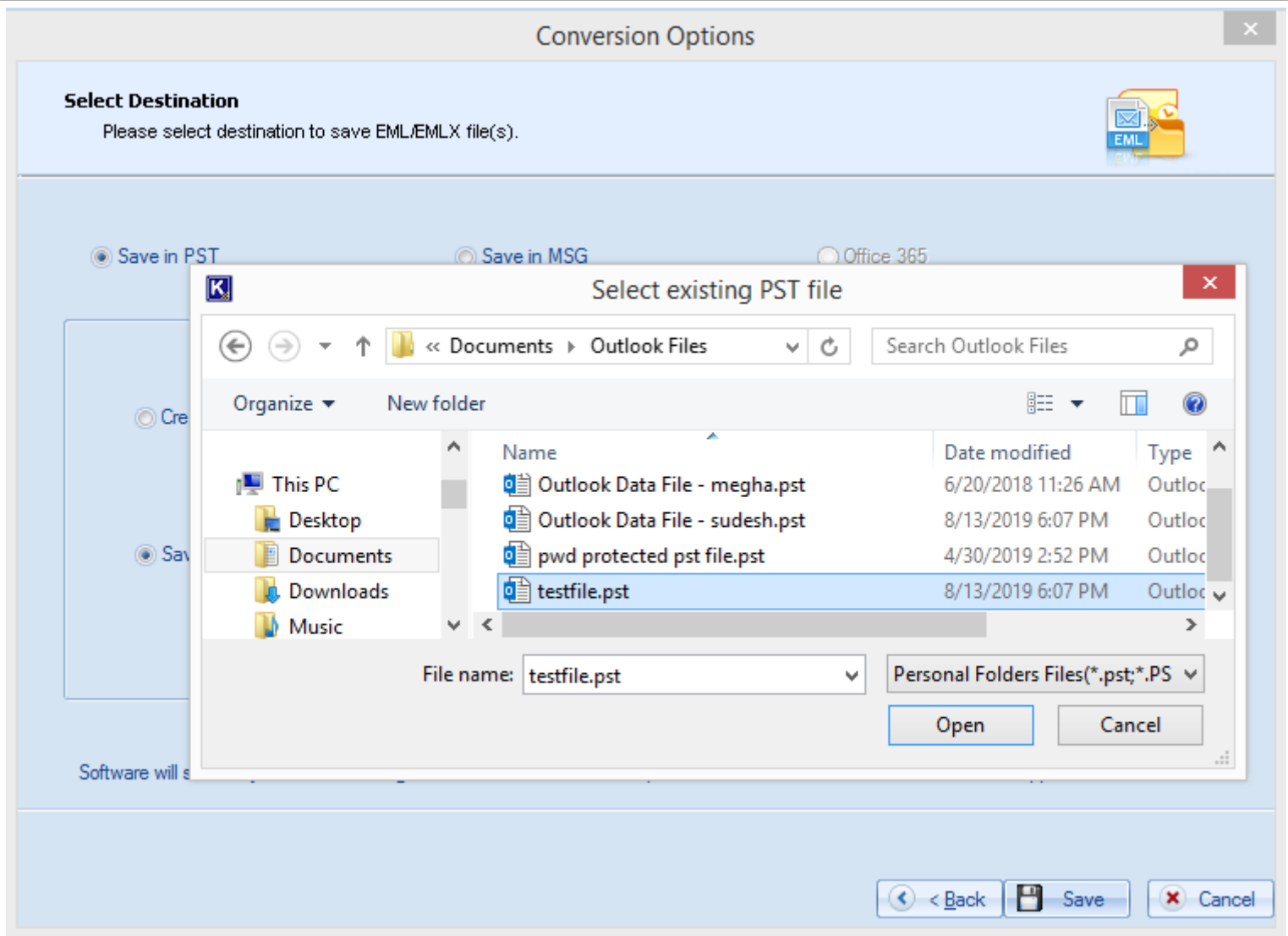


Figure 4.17: Saving in already-existing PST File

Saving in MSG File Format:

To save the converted files in MSG format, select the **Save in MSG** checkbox > Click the **Browse** button. Finally, select a destination in the **Browse For Folder** dialog box > Click **OK**.

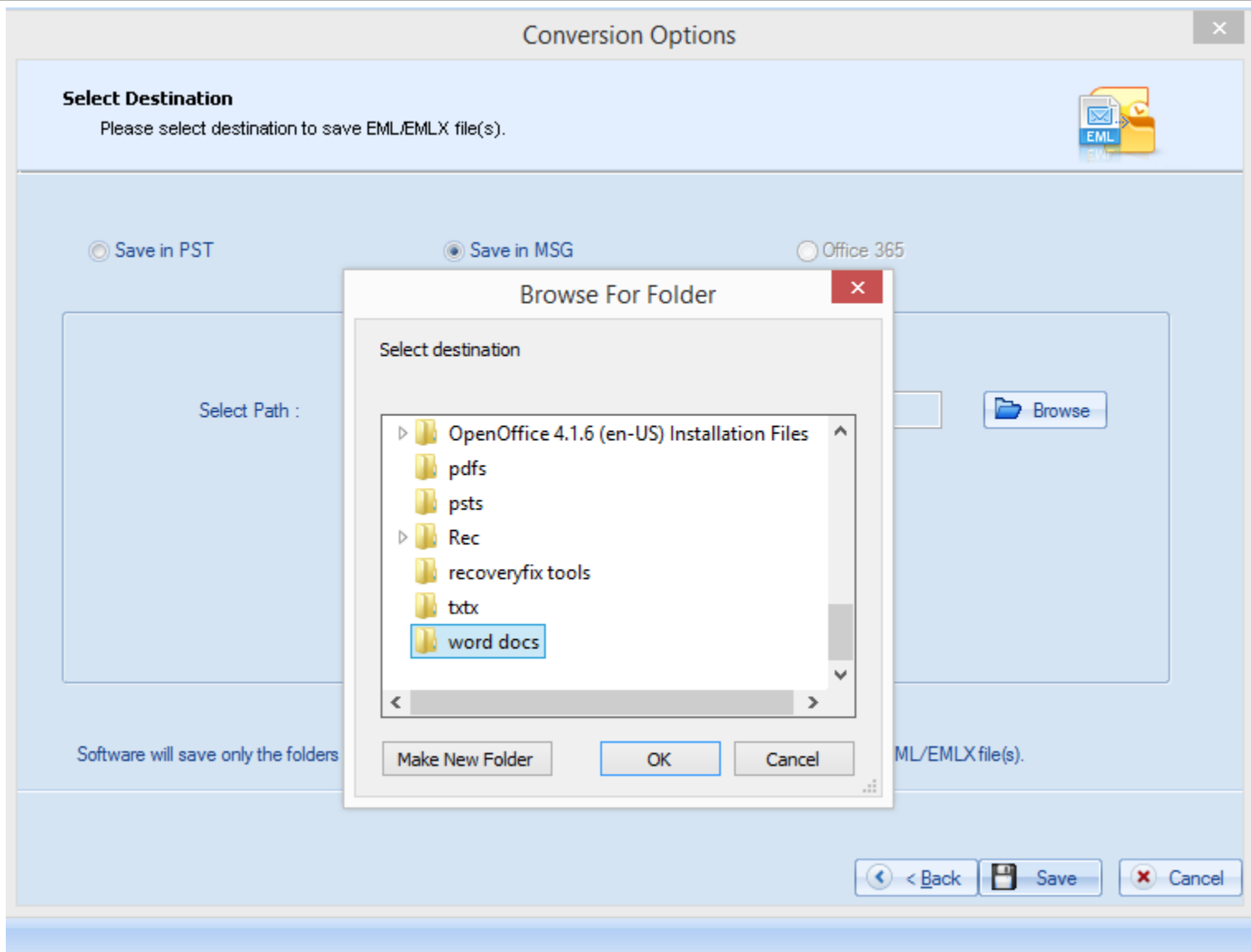


Figure 4.18: Saving in MSG File

The specified destination path appears as:

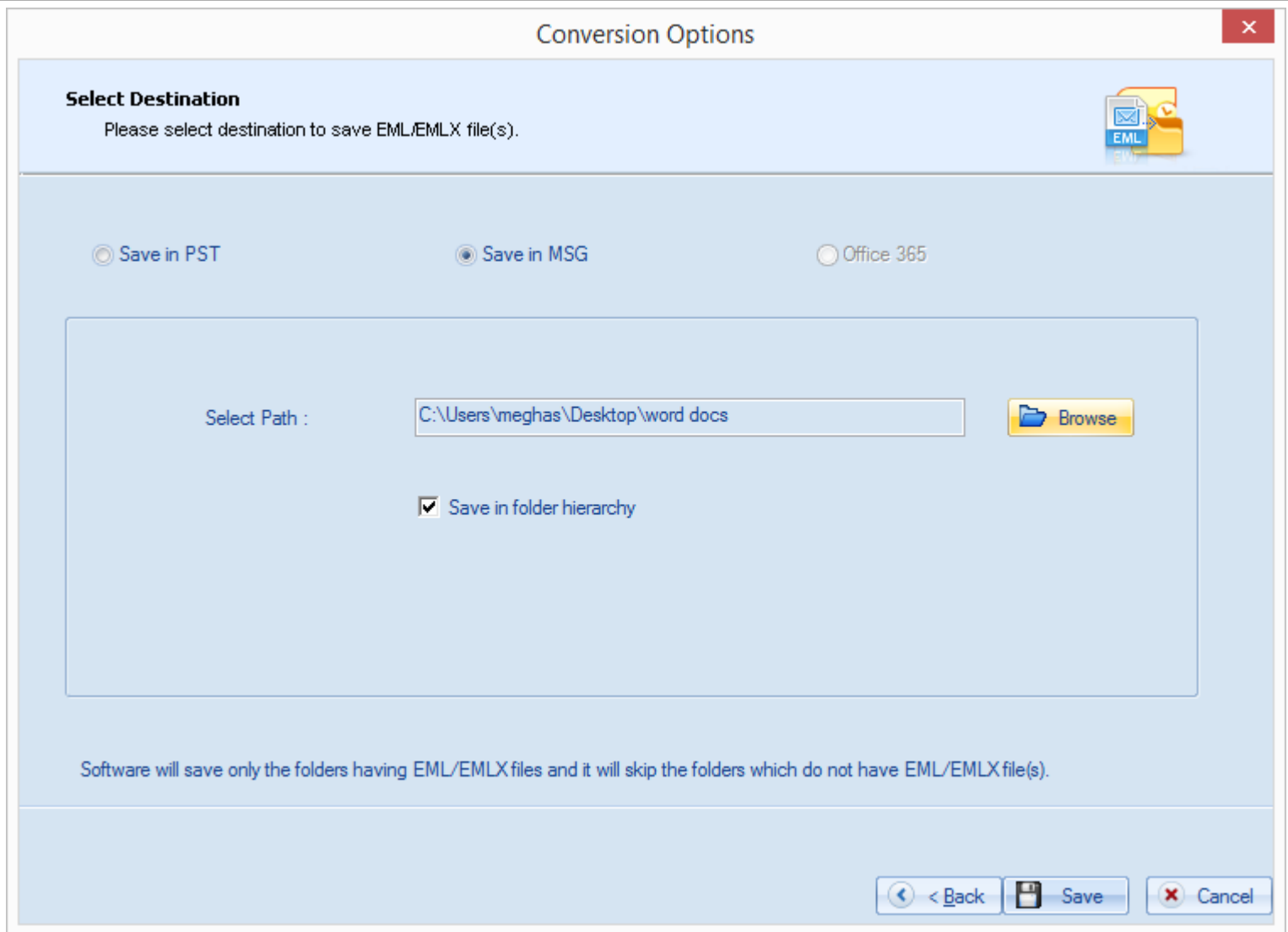


Figure 4.19: Provided Path for MSG File

On successful saving in MSG file format, the software displays the successful saving message as:

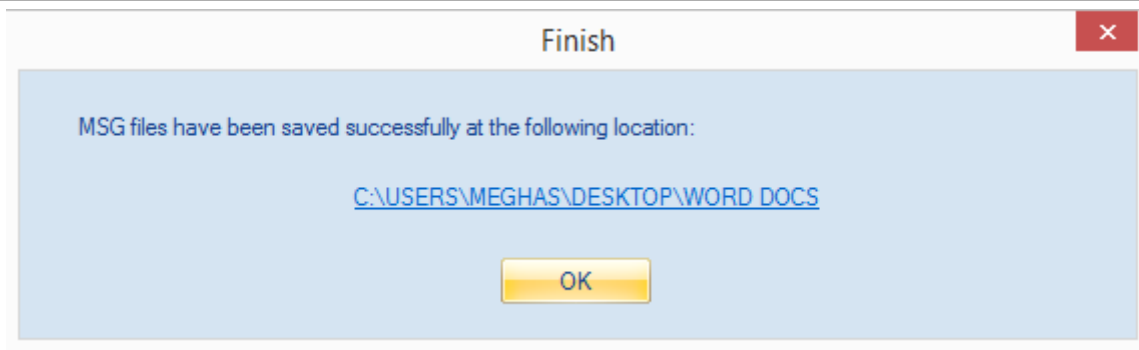


Figure 4.20: Successful Saving of MSG File

5. Download Purchase and Register

5.1 Free Trial Download

Kernel for EML to PST is available as an evaluation version for free that allows users to analyze its features and functionalities before deciding to purchase the licensed version of the software. The free trial version works almost similar to that of the full version but has a limitation that it saves only 5 EML/EMLX files per folder into PST or MSG file. To save all the converted files, purchase the licensed version of the software. Free version of Kernel for EML to PST can be easily downloaded from our website:

<https://www.nucleustechologies.com/eml-to-pst.html> (encrypted and secure site)

5.2 Purchase & Register

Purchase the full version of Kernel for EML to PST software for saving the entire converted items from EML/EMLX files to MS Outlook PST or MSG files. The FREE trial version of Kernel for EML to PST software allows saving only 5 EML/EMLX files per folder into PST or MSG file.

You can purchase the Full version of Kernel for EML to PST software through our website:

<https://www.nucleustechologies.com/buy-eml-to-pst.html> (encrypted and secure site)

Payment and Delivery

Purchase Kernel for EML to PST software from our authorized resellers providing numerous payment options for your ease including PayPal, FAX, Credit Card, E-cheque, Pay Order, etc.

After making the purchase transaction with our resellers, an email is sent consisting of activation details and download link of the Full version of Kernel for EML to PST comprising of the activation code. This email is sent to the email address, which you have used while processing the purchase transaction with our resellers.

We suggest you not to use false email address while making the purchase transaction.

For any other details related to purchase process, software activation process, email us at:

sales@nucleustechologies.com

5.3 Support

KernelApps Pvt. Ltd. provides round-the-clock technical support to solve technical and software queries.

for its product range to

Telephone Support:

+91-9818725861

1-866-348-7872 (Toll Free for USA/CANADA)

Email Support:

sales@nucleustechologies.com for Sales

support@nucleustechologies.com for Support

contact@nucleustechologies.com for General Queries

6. Troubleshooting

6.1 Common Issues

What is the limitation in the trial version of Kernel for EML to PST?

The trial version of Kernel for EML to PST works almost similar as that of the full version of the software. The 'Search' functionality works similar to that of the full version letting user search for EML/EMLX files, displays preview of EML/EMLX file email item, but allows saving only 5 EML/EMLX files per folder. To save entire converted items, user must purchase the full licensed version of the software.

6.2 Frequently Asked Questions

1. How to purchase Kernel for EML to PST?

One can buy Kernel for EML to PST using the website:

<https://www.nucleustechologies.com/buy-eml-to-pst.html>

2. What are the different saving options offered by Kernel for EML to PST?

Kernel for EML to PST allows saving EML/EMLX files in PST or MSG file format. While saving in PST format, user can save in a new PST or an already existing one.

3. What are the supported Windows OS platforms for Kernel for EML to PST software?

The supported Windows OS platforms for Kernel for EML to PST software are: Windows XP, Windows Vista, Windows 7, Windows 8, Windows Server 2000, Windows Server 2003, Windows Server 2008, Windows Server 2008 R2, Windows Server 2012 and Windows Server 2016.

4. What are the supported MS Outlook versions for Kernel for EML to PST software?

The supported MS Outlook versions for Kernel for EML to PST software are: MS Outlook 2000, MS Outlook 2002, MS Outlook 2003, MS Outlook 2007, MS Outlook 2010, MS Outlook 2013, MS Outlook 2016 and MS Outlook 2019.

5. Give the link for downloading the free trial version of Kernel for EML to PST software.

The free trial version of Kernel for EML to PST software can be downloaded using the link:

<https://www.nucleustechologies.com/downloads/emltopst.exe>

7. Legal Notices

This section comprises the legal specification about Kernel for EML to PST and the company KernelApps Private Limited.

7.1 Copyright Notice

KernelApps Private Limited, Kernel for EML to PST, accompanied user manual, and documentation are copyright of KernelApps, with all rights reserved. Under the copyright laws, this user manual cannot be reproduced in any form without the prior written permission of KernelApps. No Patent Liability is assumed, however, with respect to the use of the information contained herein.

© KernelApps PVT LTD. All rights reserved.

7.2 Trademarks

Kernel for EML to PST® is a copyright work of KernelApps Private Limited.

Windows 8®, Windows 7®, Windows Vista®, Windows XP®, Windows Server 2000®, Windows Server 2003®, Windows Server 2008®, Windows Server 2008 R2®, Windows Server 2012® and Windows Server 2016® are registered trademarks of Microsoft Corporation.

All other brand and product names are trademarks or registered trademarks of their respective companies.

7.3 Disclaimer

The information contained in this manual, including but not limited to any product specifications, is subject to change without notice. KernelApps Private Limited provides no warranty with regard to this manual or any other information contained herein and hereby expressly disclaims any implied warranties of merchantability or fitness for any particular purpose with regard to any of the foregoing. KernelApps Private Limited assumes no liability for any damages incurred directly or indirectly from any technical or typographical errors or omissions contained herein or for discrepancies between the product and the manual.

In no event shall KernelApps Private Limited be liable for any incidental, consequential special, or exemplary damages, whether based on tort, contract or otherwise, arising out of or in connection with this manual or any other information contained herein or the use thereof.

7.4 License Agreement

Kernel for EML to PST© by KernelApps Private Limited.

Your Agreement to this License

You should carefully read the following terms and conditions before using, installing, or distributing this software, unless you have a different license agreement signed by KernelApps Private Limited. The terms and conditions of this License describe the permitted use and users of each Licensed Copy of Kernel for EML to PST. For purposes of this License, if you have a valid license, you have the right to use a single Licensed Copy of KernelApps.

Scope of License

Each Licensed Copy of Kernel for EML to PST may either be used by a single person or used non-simultaneously by multiple people who use the software personally installed on a single workstation. All rights of any kind in the KernelApps, which are not expressly granted in this License, are entirely and exclusively reserved to and by KernelApps. You may not rent, lease, modify, translate, reverse engineer, decompile, disassemble, or create derivative works based on, KernelApps, nor permit anyone else to do so. You may not make access to KernelApps available to others in connection with a service bureau, application service provider, or similar business, nor permit anyone else to do so.

Warranty Disclaimers and Liability Limitations

Kernel for EML to PST, and any and all accompanying software, files, data and materials, are distributed and provided as is and with no warranties of any kind, whether expressed or implied. In particular, there is no warranty for the quality of data recovered. You acknowledge that good data processing procedure dictates that any program, including Kernel for EML to PST, must be thoroughly tested with non-critical data before there is any reliance on it, and you hereby assume the entire risk of all use of the copies of Kernel for EML to PST covered by this License. This disclaimer of warranty constitutes an essential part of this License. In addition, in no event does KernelApps authorize you or anyone else to use Kernel for EML to PST in applications or systems where Kernel for EML to PST Failure to perform can reasonably be expected to result in a significant physical injury, or in loss of life. Any such use is entirely at your own risk, and you agree to hold KernelApps harmless from any and all claims or losses relating to such unauthorized use.

General

This License is the complete statement of the agreement between the parties on the subject matter, and merges and supersedes all other or prior understandings, purchase orders, agreements, and arrangements. This License shall be governed by the laws of the State of Delhi. Exclusive jurisdiction and venue for all matters relating to this License shall be in courts and for a located in the State of Delhi, and you consent to such jurisdiction and venue. There are no third-party beneficiaries of any promises,

obligations, or representations made by KernelApps herein. Any waiver by KernelApps of any violation of this License by you shall not constitute, nor contribute to, a waiver by KernelApps of any other or future violation of the same provision, or any other provision, of this License.