



Kernel for Draw

“Repair corrupt and damaged documents
of OpenOffice Draw (.odg files)”

PRODUCT GUIDE

Table of Contents

1.	Introduction to Kernel for Draw	5
1.1	Using this Manual.....	5
1.2	About Kernel for Draw	6
1.3	Who Should Use this Software?.....	6
2.	Getting Started	7
2.1	Installation Pre-requisites.....	7
2.2	Downloading Kernel for Draw for the First Time.....	8
2.3	Install Kernel for Draw	8
2.4	Start Kernel for Draw	8
2.5	Uninstall Kernel for Draw.....	8
3.	Software Interface	10
3.1	Menu-bar.....	10
3.2	Tool-bar	12
3.3	Status Bar	13
3.4	Buttons Used	13
3.5	Customize User Interface.....	13
4.	Repairing .odg Files	14
5.	Full Version	15
5.1	Requirement of Full Version.....	15
5.2	Purchasing Full Version.....	15
6.	Support	16
7.	Troubleshooting	17
7.1	Common Issues	17
7.2	Frequently Asked Questions	17
8.	Legal Notices	18
8.1	Copyright	18
8.2	Trademark	18
8.3	Disclaimer	18

8.4	License Agreement	18
-----	-------------------------	----

Table of Figures

Figure 3.1: File Menu.....10

Figure 3.2: View Menu11

Figure 3.3: Help Menu11

Figure 3.4: Status Bar.....13

1. Introduction to Kernel for Draw

Welcome to the user manual for Kernel for Draw, the most effective and convenient .odg file repair tool available that repairs corrupt Open Office Draw documents. This user manual comprises step by step guidelines on using Kernel for Draw.

1.1 Using this Manual

This user manual is intended to guide users on using Kernel for Draw. We suggest that first time users should read this user manual completely and carefully before proceeding to use the software. However, if you are an experienced user, you can use the table of contents to find out information pertaining to the tasks that you need to perform by using Kernel for Draw. You can use the table of contents to navigate through different sections of this user manual. The table of contents lists all the sections that are contained in this user manual in chronological order. The user manual comprises the following sections:

- Introduction
- Getting Started
- Software Interface
- Repairing .odg files
- Full Version
- Support
- Troubleshooting
- Legal Notice

Certain abbreviations have been used throughout this manual. For clear understanding of the contents of this user manual, please go through the list of abbreviations, mentioned below, before reading the manual.

1.1.1 List of Abbreviations

ODG: OpenDocument Drawing

MS: Microsoft

RAM: Random Access Memory

MB: Mega-Byte

GB: Giga-Byte



1.2 About Kernel for Draw

Kernel for Draw is file repair and data recovery software for Open Office Draw. This software repairs Open Office Draw document files that become inaccessible due to unexpected system shutdown, power failure, virus corruptions, software errors, media errors, etc.

Kernel for Draw quickly and effectively repairs the corrupt and inaccessible odg files by repairing corrupt .odg file, keeping the complete document format intact. It restores text, images, embedded images, text formatting, image objects and other items from corrupt odg files and saved them to new healthy odg files to again access with Open Office Draw software.

1.3 Salient Features

Salient features of Kernel for Draw include:

- Efficient embedded repair algorithms to quickly repair even heavy files
- Support for all versions of Open Office Draw
- User friendly graphical user interface
- Support for batch repair of .odg files
- Free demo to test the capabilities of the tool before purchasing it

1.3 Who Should Use this Software?

The capability of Kernel for Draw to repair large sized .odg files makes it appropriate for use by professional authors who keep their important data stored in Open Office Draw documents. The software is also suitable for other Open Office Draw users who have lost their important data stored in .odg files due to .odg file corruption. This corruption could have been caused due to virus attacks, improper system shutdown, installation of unsupported software, etc.

2. Getting Started

Now that you have understood the features and potential of Kernel for Draw, you are ready to get hands on experience of the software. To start repairing .odg files, you will first need to download and install this software. However, it is strongly recommended that before installing Kernel for Draw, you should go through the installation pre-requisites for the software to ensure that your computer is appropriately configured to run the software.


2.1 Installation Pre-requisites

The various pre-requisites for installing and running Kernel for Draw can be broadly classified into two major categories – Hardware requirements and Software requirements.

2.1.1 Hardware Requirements:

The hardware requirements for installing the software are as follows:

- Pentium class processor
- Minimum 64MB RAM (128 MB recommended)
- 10MB for Software installation
- Disk Space - Enough space to store the repaired files

 You should have at-least 10 MB of free disk space if you want to repair and save a 10 MB.odg file.

2.1.2 Software Requirements:

The software requirements for installing the software can further be grouped into two categories – Operating system requirements and Open Office version requirements.

The requirements are as follows:

2.1.2.1 Operating System Requirements

Supported operating systems:

- Windows Vista
- Windows XP
- Windows 2003
- Windows 2000

2.1.2.2 Open Office Version Requirements

Supported Open Office versions:


- All versions of Open Office

2.2 Downloading Kernel for Draw for the First Time

After checking your computer with the prescribed system requirements for Kernel for Draw, you can download and install the software on your computer. You can buy the full version of the software from any one of our authorized resellers– Element5, Asknet and 2CO.

If you want to try using Kernel for Draw before buying it, you can download the evaluation version from the following link:

<http://www.nucleustechologies.com/download-openoffice-draw-recovery.php>

 You can repair .odg files saved on your system by using the evaluation version of Kernel for Draw; however, the repaired file will display the text 'Demo' instead of the original text until you purchase the full version of the software.

2.3 Install Kernel for Draw

After downloading the installer file for Kernel for Draw, you can install the software by running the file. To install Kernel for Draw:

1. Double-click the Kernel for Draw installer.
2. Follow the on-screen instructions.

The **Setup Installation Complete** screen will be displayed.

3. Click **Finish** to launch the software.

2.4 Start Kernel for Draw

To start Kernel for Draw:

Click the **Start → All Programs → Kernel for Draw**

Alternatively, you can launch Kernel for Draw by double-clicking the shortcut icon available on the desktop and Quick Launch icon.

2.5 Uninstall Kernel for Draw

You may need to uninstall and re-install Kernel for Draw.


To uninstall Kernel for Draw:



1. Click the **Start → All Programs → Kernel for Draw → Uninstall Kernel for Draw**

A warning message will be displayed.

2. Click **Yes** to uninstall Kernel for Draw.

 Before proceeding to uninstall Kernel for Draw, you must ensure that the software is not running.

You can alternatively uninstall Kernel for Draw from the **Control Panel** by performing the following steps:

1. Click the **Start Menu → Control Panel** and then double click the **Add or Remove Programs** icon.
2. Select **Kernel for Draw** and click **Remove**. A warning message will be displayed.
3. Click **Yes** to uninstall Kernel for Draw.

3. Software Interface

Now that Kernel for Draw has been installed on your computer, you can start using the software after getting acquainted with the software interface.

3.1 Menu-bar

The menu-bar of Kernel for Draw comprises three main menus – File, View, and Help.

3.1.1 File Menu

The **File** menu comprises four menu items.

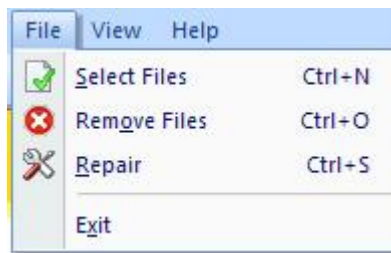


Figure 3.1: File Menu

Menu items in the **File** menu:

Field Name	Field Description
Select File	Select to browse and list corrupt .odg files stored on your hard disk
Remove File	Select to remove selected files from the list
Repair	Select to start the repairing corrupt files
Exit	Select to close the software

3.1.2 View Menu

The **View** menu comprises three menu items.

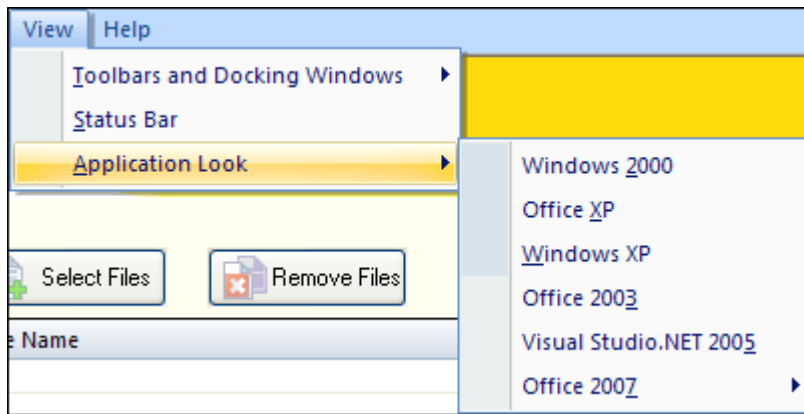


Figure 3.2: View Menu

Menu Items in the View menu:

Field Name	Field Description
Toolbars and Docking Windows	Select to show or hide Tool bar/Standard bar
Status Bar	Select to show or hide Status bar
Application Look	Select to change the software theme

3.1.3 Help Menu

The **Help** menu comprises three menu items.

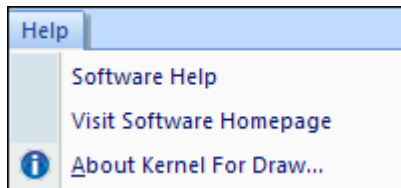


Figure 3.3: Help Menu

Menu items in the Help menu:

Field Name	Field Description
Software Help	Select to view help information pertaining to performing various tasks using Kernel for Draw.

Visit Software Homepage





Select to visit software homepage on our website

About Kernel for Draw

Select to view version-related and support information of Kernel for Draw

3.2 Tool-bar

The tool-bar in Kernel for Draw is displayed below the menu-bar. The tool-bar provides a convenient and user-friendly method to perform certain actions that can also be performed by using the menu-bar. Read the information in the table below to find out about the tool-bar buttons:

Button	Button Name	Button Description
	Select File(s)	Select to browse and list corrupt .odg files stored on your hard disk
	Remove File(s)	Select to remove selected files from the list
	Repair File(s)	Select to start the repairing of corrupt odg files
	About	Select to view version-related and support information of Kernel for Draw

You can display or hide the tool-bar by using the **Toolbars and Docking Windows** menu item in the **View** menu of the menu-bar.

3.3 Status Bar


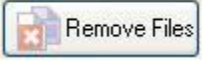
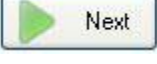
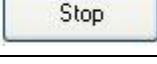
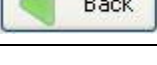

Status bar is displayed at the bottom of the software window. The text 'Ready' is displayed on the status bar if Kernel for Draw is ready to be used. Status bar also displays the text 'CAP', 'NUM', 'SCRL' which respectively correspond to the Caps Lock, Num Lock, and Scroll Lock keys on your keyboard. If any of these keys are pressed, the color of the corresponding text will turn blue/black.



Figure 3.4: Status Bar

3.4 Buttons Used

Apart from the standard options available in the menu-bar and the tool-bar, three buttons– **Select Files**, **Remove Files**, and **Next** are displayed on the main window with other buttons displayed on the corresponding windows.

	Click to browse and select the .odg file that needs to be repaired
	Click to remove selected files from the list of .odg files
	Click to repair and save the files
	Click to stop the repair and save process
	Click to view main window of the software
	Click to close the software

3.5 Customize User Interface

You can customize the theme of Kernel for Draw by selecting your desired theme from the **Application Look** menu item in the **View** menu. You can add or remove toolbar buttons by clicking:




→**Standard**→**Add or Remove Buttons** in the toolbar and selecting appropriate buttons.

4. Repairing .odg Files

Now that you have complete familiarity of the user interface of Kernel for Draw, you are ready to repair .odg files. To repair .odg files:


1. Launch Kernel for Draw.
2. Click the **Select Files** button to browse and list corrupt ODG files.

 You can select multiple .odg files to repair them in one repair cycle. You can remove any file from the list by selecting the file from the list and clicking **Remove Files**.

3. Click **Next** to start with the .odg file repairing process. After you click **Next**, the software asks you to define the location to save the repaired file.
4. Browse to your desired location and click **OK**.

As soon as the Kernel for Draw finishes the repairing and saving process, it displays the message '**The repairing process was completed successfully**' along with a link that points to the location where the repaired .odg files are saved.

5. Click the link to view the repaired files or click **OK** to close the message box.

 The names of the repaired .odg files will be the original file name prefixed by the text 'REC'.

5. Full Version

Although you can use Kernel for Draw evaluation version for free and experience the capabilities of the software, there are certain features that are not available in the evaluation version.

5.1 Requirement of Full Version

By using the evaluation version of Kernel for Draw, you can repair corrupt .odg files; however, you cannot view the original content of the repaired files. The text 'Demo' will be displayed instead of text and images, software will display any three images from the document.

You will need to buy the full version of the software to view the original content of the .odg files.

5.2 Purchasing Full Version

You can buy the full version of Kernel for Draw from any one of our authorized resellers – Element5, Asknet and 2CO.

As soon the purchase transaction with our resellers gets completed, our sales team will send you an email comprising the URL to download the full version of Kernel for Draw and activation details of the software.

6. Support

We have an extensive and efficient support system in place to assist our customers with all issues related to using Kernel for Draw. The software comes with an embedded help manual that can be accessed by clicking **Help→Software Help** in the menu-bar. You can also press the F1 key on the keyboard of your computer to access the embedded help of Kernel for Draw.

You can access the online help for Kernel for Draw at <http://www.nucleustechnologies.com/Online-Helps.html>

We also have live support wherein you can chat with our software experts at <http://www.nucleustechnologies.com/Support.html> .

To talk on phone with our software experts call:

Help line:

+91-9818725861

1-866-348-7872 (Toll Free for USA/CANADA)

You can also email us about your queries at;

sales@nucleustechnologies.com for Sales

support@nucleustechnologies.com for Support

contact@nucleustechnologies.com for General Queries



7. Troubleshooting

This section deals with your generic and specific queries pertaining to using Kernel for Draw.

7.1 Common Issues

Why does Kernel for Draw have limitations in evaluation copy?

The free evaluation version of Kernel for Draw is intended to enable you to experience the capabilities of the software. You will need to buy the software to view and save restricted text and images.

7.2 Frequently Asked Questions

How to Buy Kernel for Draw?

You can buy Kernel for Draw online at <http://www.nucleustechnologies.com/Buy-Data-Recovery-Software.html>

I have lost my full version for Kernel for Draw. Can you help me?

Please email us at **sales@nucleustechnologies.com**. Please include your name, address, email address, and order confirmation number (if you have it). We will be happy to help you.

I cannot view the toolbar. How can I view it?

The tool-bar in Kernel for Draw is by default visible. It might have become invisible by someone accidentally changing the settings

Click **View→Toolbars and Docking Windows→Standard** to make the tool-bar visible again.

8. Legal Notices

This section comprises the legal specification about Kernel for Draw and the company KERNELAPPS PRIVATE LIMITED.

8.1 Copyright

KERNELAPPS PRIVATE LIMITED, Kernel accompanied user manual and documentation are copyright of KERNELAPPS PRIVATE LIMITED, with all rights reserved. Under the copyright laws, this user manual cannot be reproduced in any form without the prior written permission of KERNELAPPS PRIVATE LIMITED. No Patent Liability is assumed, however, with respect to the use of the information contained herein.

© KERNELAPPS PRIVATE LIMITED. All rights reserved.

8.2 Trademark

Kernel ® is a copyright work of KERNELAPPS PRIVATE LIMITED.

Windows 95®, Windows 98®, Windows ME®, Windows NT®, Windows 2000 Server®, Windows 2000 Advanced Server®, Windows 2003 Server®, Windows XP®, Windows Vista, MS-DOS and Open Office are registered trademarks of Microsoft Corporation and Sun Microsystems, Inc.

All other brand and product names are trademarks or registered trademarks of their respective companies.

8.3 Disclaimer

The Information contained in this manual, including but not limited to any product specifications, is subject to change without notice. KERNELAPPS PRIVATE LIMITED provides no warranty with regard to this manual or any other information contained here in and here by expressly disclaims any implied warranties of merchantability or fitness for any particular purpose with regard to any of the foregoing KERNELAPPS PRIVATE LIMITED assumes no liability for any damages incurred directly or indirectly from any technical or typographical errors or omissions contained here in or for discrepancies between the product and the manual. In no event shall KERNELAPPS PRIVATE LIMITED, be liable for any incidental, consequential special, or exemplary damages, whether based on tort, contract or otherwise, arising out of or in connection with this manual or any other information contained here in or the use there of.

8.4 License Agreement

Kernel for Draw Copyright © by KERNELAPPS PRIVATE LIMITED.

Your Agreement to this License

You should carefully read the following terms and conditions before using, installing or distributing this software, unless you have a different license agreement signed by KERNELAPPS PRIVATE LIMITED. The terms and conditions of this License describe the permitted use and users of



each Licensed Copy of Kernel for Draw. For purposes of this License, if you have a valid license, you have the right to use a single Licensed Copy of Kernel.

Scope of License

Each Licensed Copy of Kernel for Draw may either be used by a single person or used non-simultaneously by multiple people who use the software personally installed on a single workstation. All rights of any kind in Kernel, which are not expressly granted in this License, are entirely and exclusively reserved to and by KERNELAPPS PRIVATE LIMITED. You may not rent, lease, modify, translate, reverse engineer, decompile, disassemble, or create derivative works based on, Kernel, nor permit anyone else to do so. You may not make access to Kernel available to others in connection with a service bureau, application service provider, or similar business, nor permit anyone else to do so.

Warranty Disclaimers and Liability Limitations

Kernel for Draw, and any and all accompanying software, files, data and materials, are distributed and provided AS IS and with no warranties of any kind, whether expressed or implied. In particular, there is no warranty for the quality of data recovered. You acknowledge that good data processing procedure dictates that any program, including Kernel, must be thoroughly tested with non-critical data before there is any reliance on it, and you hereby assume the entire risk of all use of the copies of Kernel covered by this License. This disclaimer of warranty constitutes an essential part of this License. In addition, in no event does KERNELAPPS PRIVATE LIMITED authorize you or anyone else to use Kernel for Draw in applications or systems where Kernel for Draw failure to perform can reasonably be expected to result in a significant physical injury, or in loss of life. Any such use is entirely at your own risk, and you agree to hold KERNELAPPS PRIVATE LIMITED harmless from any and all claims or losses relating to such unauthorized use.

General

This License is the complete statement of the agreement between the parties on the subject matter, and merges and supersedes all other or prior understandings, purchase orders, agreements and arrangements. This License shall be governed by the laws of the State of Delhi. Exclusive jurisdiction and venue for all matters relating to this License shall be in courts and for a located in the State of Delhi, and you consent to such jurisdiction and venue. There are no third party beneficiaries of any promises, obligations or representations made by KERNELAPPS PRIVATE LIMITED herein.

Any waiver by KERNELAPPS PRIVATE LIMITED of any violation of this License by you shall not constitute, nor contribute to, a waiver by KERNELAPPS PRIVATE LIMITED of any other or future violation of the same provision, or any other provision, of this License.

