



## Kernel for BKF

“Easily Repair Corrupt Files Created  
With ntbackup.exe”

## PRODUCT GUIDE

# Table of Contents

---

1.	Introduction to Kernel for BKF.....	5
1.1	Using this Manual .....	5
1.2	About Kernel for BKF .....	6
1.3	Salient Features .....	6
1.4	Who Should Use this Software? .....	7
2.	Getting Started .....	8
2.1	Installation Pre-requisites.....	8
2.2	Downloading Kernel for BKF for the First Time .....	8
2.3	Install Kernel for BKF .....	9
2.4	Start Kernel for BKF.....	9
2.5	Uninstall Kernel for BKF.....	9
3.	Software Interface .....	10
3.1	Menu-bar.....	10
3.2	Tool-bar.....	11
3.3	Status Bar .....	13
3.4	Customize User Interface.....	13
4.	Repairing Corrupt BKF Files .....	14
5.	Customizing Repaired Files .....	17
6.	Saving Repaired Files .....	18
7.	Full Version .....	19
7.1	Requirement of Full Version.....	19
7.2	Purchasing Full Version.....	19
8.	Support.....	20
9.	Troubleshooting .....	21
9.1	Common Issues .....	21
9.2	Frequently Asked Questions .....	21
10.	Legal Notices .....	22
10.1	Copyright .....	22
10.2	Trademark .....	22

10.3	Disclaimer .....	22
10.4	License Agreement .....	22

# Table of Figures

---

Figure 3.1: File Menu ..... 10

Figure 3.2: Tools Menu..... 10

Figure 3.3: Help Menu ..... 11

Figure 3.4: Status Bar ..... 13

Figure 4.1: Main Window ..... 14

Figure 4.2: Dialog Box..... 15

Figure 4.3: Corrupted BKF File..... 15

Figure 4.4: Recovered Files ..... 16

Figure 5.1: Folder Setting ..... 17

# 1. Introduction to Kernel for BKF

---

Welcome to the user manual for Kernel for BKF, the most effective and convenient file repair tool that repairs and fixes corrupted MS backup files damaged due to virus corruption, backup interruption or unexpected system shutdown. This user manual comprises step by step guidelines on using Kernel for BKF.

## 1.1 Using this Manual

---

This user manual is intended to guide users on using Kernel for BKF. We suggest that first time users should read this user manual completely and carefully before proceeding to use the software. However, if you are an experienced user, you can use the table of contents to find out information pertaining to the tasks that you need to perform by using Kernel for BKF.

You can use the table of contents to navigate through different sections of this user manual. The table of contents lists all the sections that are contained in this user manual in chronological order. The user manual comprises the following sections:

- Introduction
- Getting Started
- Software Interface
- Repairing .corrupt BKF files
- Customizing Repaired Files
- Saving Repaired Files
- Full Version
- Support
- Troubleshooting
- Legal Notices

Certain abbreviations have been used throughout this manual. For clear understanding of the contents of this user manual, please go through the list of abbreviations, mentioned below, before reading the manual.

### 1.1.1 List of Abbreviations

MS: Microsoft

BKF: Backup Files

RAM: Random Access Memory



MB: Mega-Byte

GB: Giga-Byte

## 1.2 About Kernel for BKF

---

Kernel for BKF - Corrupt Backup Repair Software repairs and fixes corrupted MS Backup files damaged due to following reasons and error messages such as -

- CRC (cyclic redundancy check) errors
- "Fails to open file "
- Virus Corruption
- Unexpected system shutdown
- Backup interruption

Kernel for BKF - Corrupted Backup Repair Software recovers files from corrupted BKF archives damaged due to backup interruptions, virus attacks or CRC errors.

During the repairing process, a complete scan of the damaged BKF file is performed to locate and extract the recoverable files. After complete scanning, the files which are recoverable are recovered and copied at the user defined location.

## 1.3 Salient Features

---

Salient features of Kernel for BKF include:

- Repairs corrupt BKF archive
- Supports Unicode characters (Non English Characters)
- Save Snapshot option which allows you to save the details of a bkf file scan so that later you can use Load Snapshot option to resume the saved scan process, which helps you save the rescanning time.
- Option to quickly search and locate a file.
- Repairs CRC errors.
- Supports bkf files created with Backup Exec by VERITAS Software, under Windows, Novell, and Macintosh.
- New Enhanced User friendly interface, no technical skills required.

## 1.4 Who Should Use this Software?

---

The capability of Kernel for BKF to repair corrupt BKF files makes it appropriate for use by people, who are striving to recover data from corrupt or inaccessible BKF files. Kernel for BKF repairs and fixes corrupt MS backup files that are damaged due to virus attack, improper system shutdown, CRC (cyclic redundancy check) errors, backup interruptions and other operational errors.

## 2. Getting Started

---

Now that you have understood the features and potential of Kernel for BKF, you are ready to get hands on experience of the software. To start repairing bkf files, you will first need to download and install this software.

It is strongly recommended that before installing Kernel for BKF, you should go through the installation pre-requisites for the software, so that it can be assured that your computer is appropriately configured to run the software.

### 2.1 Installation Pre-requisites

---

Kernel for BKF works on all Windows-based computers. Following are detailed minimum system requirements for the Host Computer:

#### 2.1.1 Hardware Requirements:

The hardware requirements for installing the software are as follows:

- Pentium II 400 MHz
- Minimum 64MB RAM (128 MB recommended)
- Enough space to save the recovered data; for example, if you expect to recover 40 MB lost data, the good device should have at least 40 MB free space.

#### 2.1.2 Operating System Requirements:

Supported Operating Systems:

- Windows Vista
- Windows XP
- Windows 2003
- Windows 2000

#### 2.1.3 Supported BKF files

Supports all versions of BKF files created using MS backup or VERITAS backup software.

## 2.2 Downloading Kernel for BKF for the First Time

---

After checking your computer with the prescribed system requirements for Kernel for BKF, you can download and install the software on your computer. You can buy the full version of the software from any one of our authorized resellers– Element5, Asknet and 2CO.





If you want to try Kernel for BKF before buying it, you can download the evaluation version from the following link:

<http://www.nucleustechnologies.com/Download-BKF-File-Repair-Software.php>

## 2.3 Install Kernel for BKF

---

After downloading the installer file for Kernel for BKF, you can install the software by running the file. To install Kernel for BKF:

1. Double-click the Kernel for BKF installer. Follow the on-screen instructions.

The **Setup Installation Complete** screen will be displayed.

2. Click **Finish** to launch the software.

## 2.4 Start Kernel for BKF

---

To start Kernel for BKF:

Click the **Start → All Programs → Kernel for BKF**

Alternatively, you can launch Kernel for BKF by double-clicking the shortcut icon available on the Desktop and Quick Launch icon.

## 2.5 Uninstall Kernel for BKF


---

You may need to uninstall and re-install Kernel for BKF. To uninstall Kernel for BKF:

1. Click the **Start → All Programs → Kernel for BKF → Uninstall Kernel for BKF**

A warning message will be displayed.

2. Click **Yes** to uninstall Kernel for BKF.

 Before proceeding to uninstall Kernel for BKF, you must ensure that the software is not running on your computer.

You can alternatively uninstall Kernel for BKF from the **Control Panel** by performing the following steps:

1. Click the **Start Menu → Control Panel** and then double click the **Add or Remove Programs** icon.
2. Select **Kernel for BKF** and click **Remove**.

A warning message will be displayed.

3. Click **Yes** to uninstall Kernel for BKF.

# 3. Software Interface

Now that Kernel for BKF has been installed on your computer, you can start using the software after getting acquainted with the software interface.

## 3.1 Menu-bar

The menu-bar of Kernel for BKF comprises three main menus– File, View, and Help.

### 3.1.1 File Menu

The **File** menu comprises four menu items.

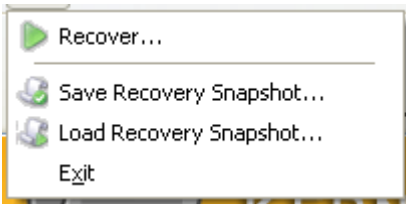


Figure 3.1: File Menu

Menu items in the **File** menu

Field Name	Field Description
Recover	Starts the recovery process
Save Recovery Snapshot	Saves the scanned BKF file
Load Recovery Snapshot	Loads the saved recovery snapshot whenever you start the recovery process again
Exit	Close Kernel for BKF

### 3.1.2 Tools Menu

The **Tools** menu comprises three menu items.

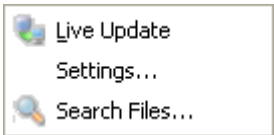


Figure 3.2: Tools Menu

Menu Items in the Tools menu:

Field Name	Field Description
Live Update	Updates the software with new version available on the Nucleus server
Settings	Specify the name of the folder (name prefix) which will contain the recovered files.
Search Files	Search specific files from the large number of recovered files

3.1.3 Help Menu

The **Help** menu comprises two menu items.

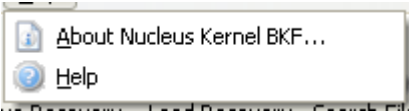










Figure 3.3: Help Menu

Menu items in the Help menu:

Field Name	Field Description
Software Help	Select to view help information pertaining to performing various tasks using Kernel for BKF.
Visit Software Homepage	Select to visit software homepage on our website
About Kernel for BKF	Select to view version-related and support information of Kernel for BKF

3.2 Tool-bar

The tool-bar in Kernel for BKF is displayed below the menu-bar. The tool-bar provides a convenient and user-friendly method to perform certain actions that can also be performed by using the menu-bar. Read the information in the table below to find out about the tool-bar buttons:

Button	Button Name	Button Description
	Recover	Click this button to start the recovery process
	Save Snapshot	Click this button to save the scanned BKF file
	Load Snapshot	Click this button to load the saved recovery snapshot
	Search Files	Click this button to search specific files from the large number of recovered files
	Live Update	Click this button to update the software with new version available on the Nucleus server
	Help	Click this button to view help of the software
	About	Click this button to view the version and other information related to the software.
	Buy Online	Click this button to purchase the software online from the website.

### 3.3 Status Bar

---

Status bar is displayed at the bottom of the software window. The text 'Ready' is displayed on the status bar if Kernel for BKF is ready to be used. Status bar also displays the text 'CAP', 'NUM', 'SCRL' which respectively correspond to the Caps Lock, Num Lock, and Scroll Lock keys on your keyboard. If any of these keys are pressed, the color of the corresponding text will turn blue/black.



Figure 3.4: Status Bar

### 3.4 Customize User Interface

---

You can add or remove toolbar buttons by clicking:

▼ → **Standard** in the toolbar and selecting appropriate buttons.

## 4. Repairing Corrupt BKF Files

---

To recover the corrupt BKF files, perform the following steps:

- In Windows, Click **Start > All Programs > Nucleus Kernel BKF Recovery > Nucleus Kernel BKF Recovery**. The main window of software will be displayed.

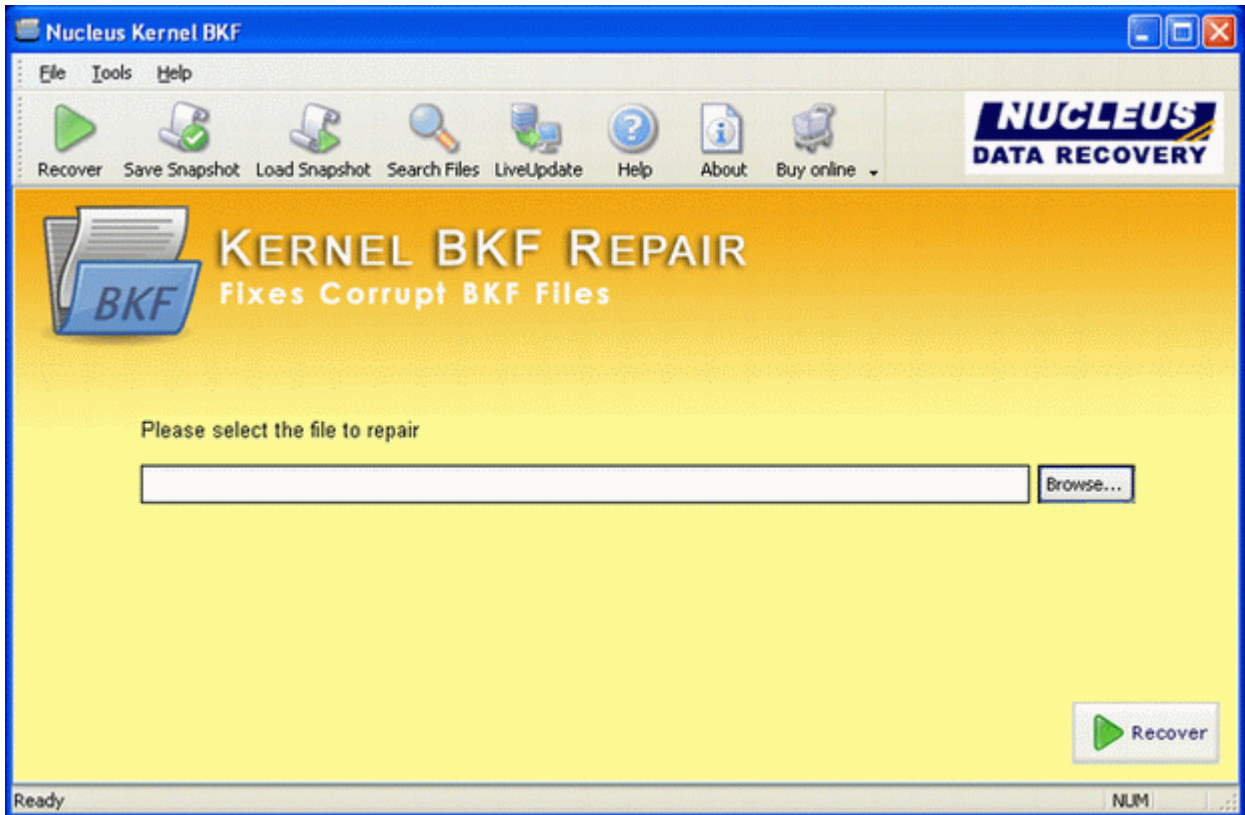


Figure 4.1: Main Window

- Click '**Browse**' button in the main window to select the corrupted .bkf file from the list. A dialogue box: **Select BKF File for Recovery** will appear.
- Select corrupted .bkf file and click '**Open**' to add the selected file.

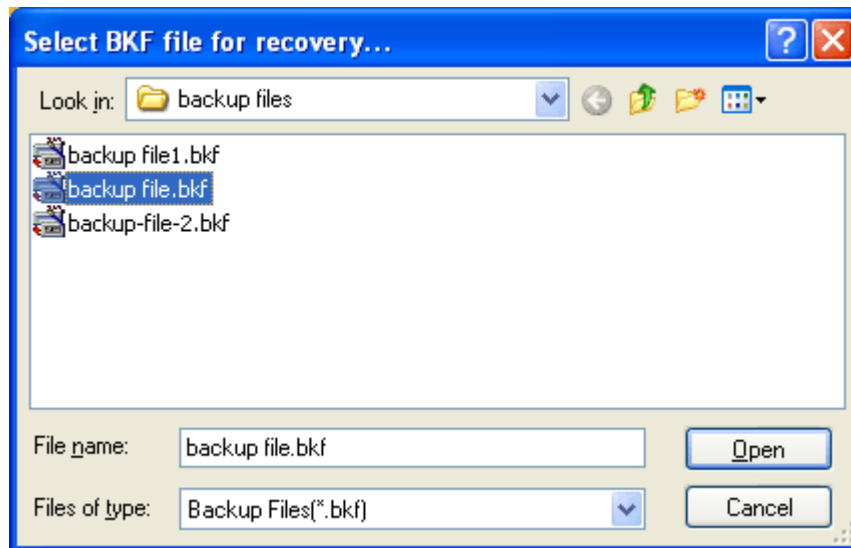


Figure 4.2: Dialog Box

With Kernel for BKF only single file can be selected and repaired at a time.

- Click '**Recover**' to start the process of recovery. The process of repairing the selected .bkf file will start.

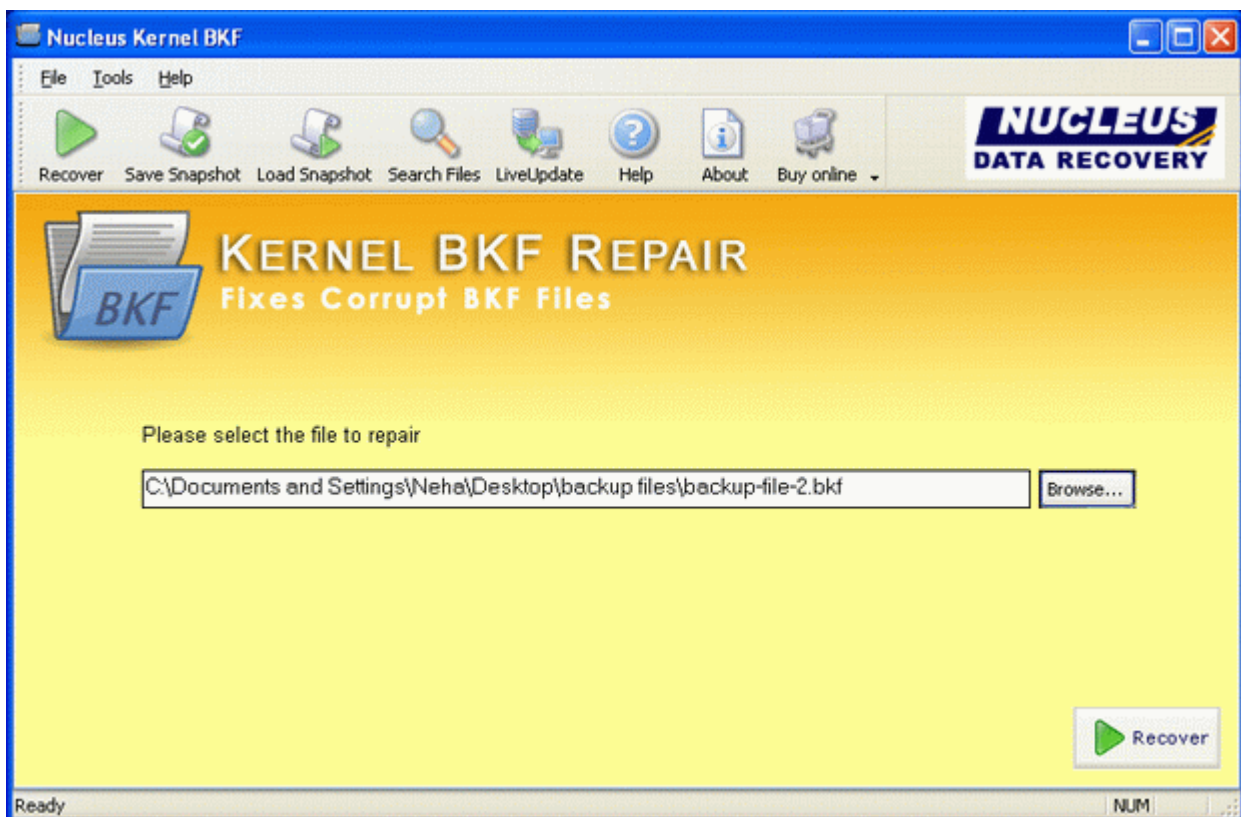


Figure 4.3: Corrupted BKF File

- Once recovery process is complete, all the recovered files will be listed on the screen of Kernel for BKF. You can save all the recovered files or select any specific file which you want to save by deselecting the check box of other files.

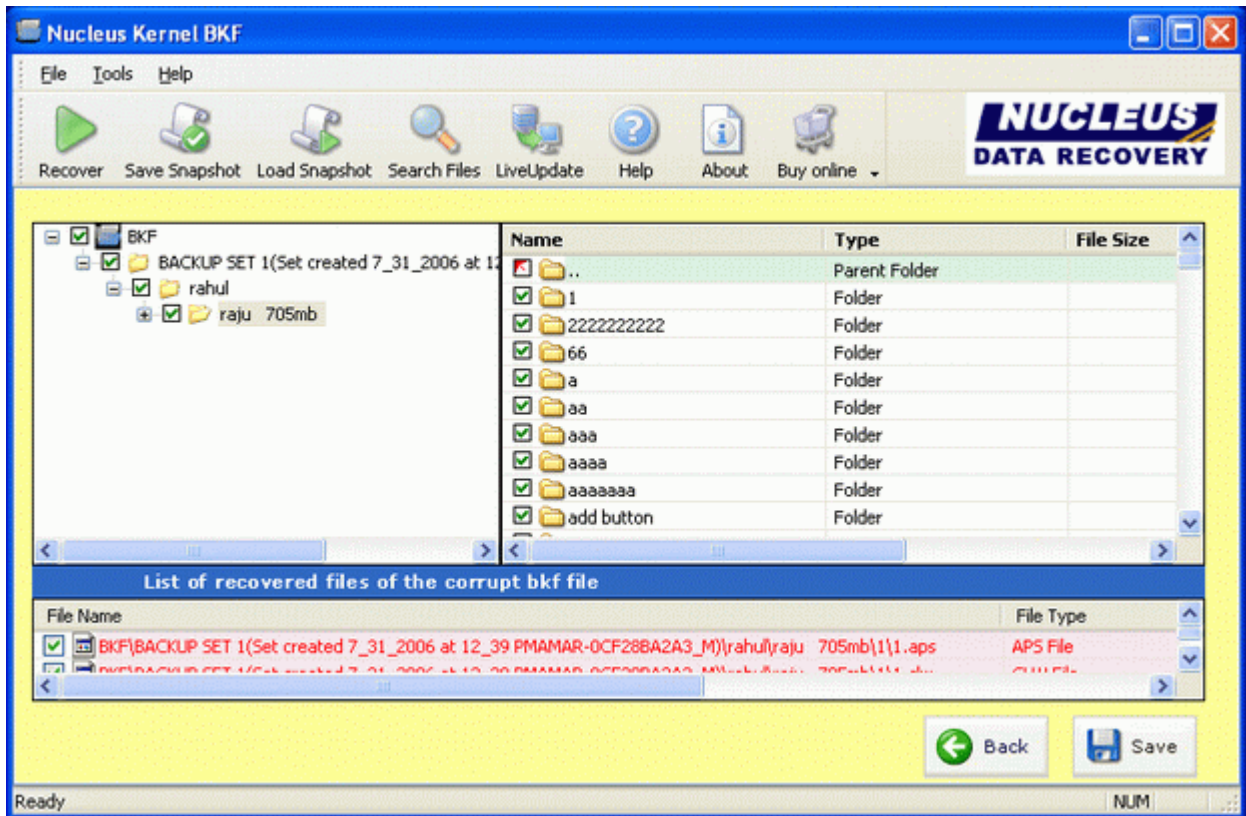


Figure 4.4: Recovered Files



## 5. Customizing Repaired Files

---

Kernel for BKF - Corrupted Backup Repair Software provides you with the option to personalize the folder which has the saved repaired files. It provides you to customize the name of the Rec folder. To configure the name of the Rec folder perform the following steps:

- Click **Tools Menu> Setting**.from the toolbar, the '**Folder Setting**' screen will be displayed.

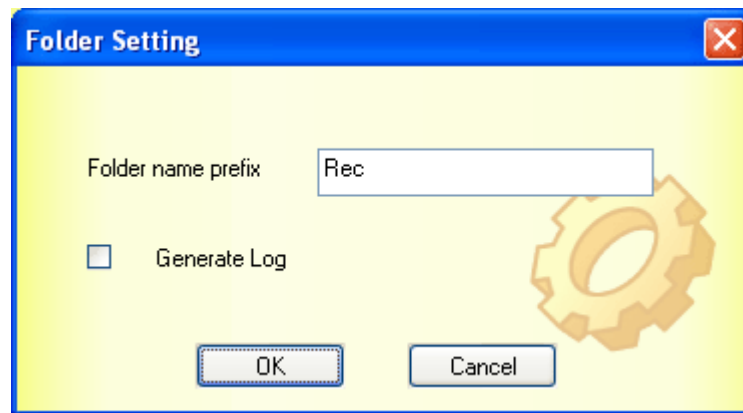


Figure 5.1: Folder Setting

- In the **Folder Setting** screen, type the desired name that you want to give to the folder which saves the repaired file and click **OK**. The name of the Rec folder is successfully modified.

 Kernel for BKF by default sets the name of the folder as "Rec"

## 6. Saving Repaired Files

---

To save the repaired BKF files, perform the following steps:

- After repairing of corrupted BKF files, Kernel for BKF - Backup Repair Software displays the repaired files in a tree like structure:
- You can select individual file for saving by deselecting other file(s) checkboxes. Select the file and press **Ctrl** key from the keyboard and simultaneously right click the mouse.
- If all the repaired files have to be saved then click the '**Save**' button without deselecting any file. A new dialogue box to define the location where the selected files will be saved will appear.
- Select the desired location and click **OK**. The process of saving file(s) will start.
- After the successful saving, a message "Saving Complete" will appear. Click **OK**.

## 7. Full Version

---

Although you can use Kernel for BKF evaluation version for free and experience the capabilities of the software, but there are certain features that are not available in the evaluation version.

### 7.1 Requirement of Full Version

---

By using the evaluation version of Kernel for BKF, you can repair corrupt BKF files; however, you cannot save the repaired files. You will need to buy the full version of the software to save the repaired files.

### 7.2 Purchasing Full Version

---

You can buy the full version of Kernel for BKF from any of our authorized resellers – Element5, Asknet and 2CO.

As soon as the purchase transaction with our resellers gets completed, our sales team will send you an email comprising the URL to download the full version of Kernel for BKF and activation details of the software.

## 8. Support

---

We have an extensive and efficient support system in place to assist our customers with all issues related to using Kernel for BKF. The software comes with an embedded help manual that can be accessed by clicking **Help→Software Help** in the menu-bar. You can also press the F1 key on the keyboard of your computer to access the embedded help of Kernel for BKF.

You can access the online help for Kernel for BKF at <http://www.nucleustechnologies.com/Online-Helps.html>

We also have live support wherein you can chat with our software experts at <http://www.nucleustechnologies.com/Support.html>

To talk on phone with our software experts call:

**Help line:**

+91-9818725861

1-866-348-7872 (Toll Free for USA/CANADA)

You can also email us about your queries at;

[sales@nucleustechnologies.com](mailto:sales@nucleustechnologies.com) for Sales

[support@nucleustechnologies.com](mailto:support@nucleustechnologies.com) for Support

[contact@nucleustechnologies.com](mailto:contact@nucleustechnologies.com) for General Queries

## 9. Troubleshooting

---

This section deals with your generic and specific queries pertaining to using Kernel for BKF.

### 9.1 Common Issues

---

Why does Kernel for BKF have limitations in evaluation copy?

The free evaluation version of Kernel for BKF is intended to enable you to experience the capabilities of the software. You will need to buy the software to view and save restricted text and images.

### 9.2 Frequently Asked Questions

---

#### How to Buy Kernel for BKF?

You can buy Kernel for BKF online at <http://www.nucleustechnologies.com/Buy-BKF-File-Repair-Software.php>

#### I have lost my full version for Kernel for BKF. Can you help me?

Please email us at [sales@nucleustechnologies.com](mailto:sales@nucleustechnologies.com). Please include your name, address, email address, and order confirmation number (if you have it). We will be happy to help you.

# 10. Legal Notices

---

This section comprises the legal specification about Kernel for BKF and the company NUCLEUS DATA RECOVERY.COM PRIVATE LIMITED

## 10.1 Copyright

---

NUCLEUS DATA RECOVERY.COM PRIVATE LIMITED, Nucleus Kernel accompanied user manual and documentation are copyright of NUCLEUS DATA RECOVERY.COM PRIVATE LIMITED, with all rights reserved. Under the copyright laws, this user manual cannot be reproduced in any form without the prior written permission of NUCLEUS DATA RECOVERY.COM PRIVATE LIMITED. No Patent Liability is assumed, however, with respect to the use of the information contained herein.

© NUCLEUS DATA RECOVERY.COM PRIVATE LIMITED. All rights reserved.

## 10.2 Trademark

---

Nucleus Kernel ® is a copyright work of NUCLEUS DATA RECOVERY.COM PRIVATE LIMITED

Windows 95®, Windows 98®, Windows ME®, Windows NT®, Windows 2000 Server®, Windows 2000 Advanced Server®, Windows 2003 Server®, Windows XP®, Windows Vista, MS-DOS and MS Office are registered trademarks of Microsoft Corporation.

All other brand and product names are trademarks or registered trademarks of their respective companies.

## 10.3 Disclaimer

---

The Information contained in this manual, including but not limited to any product specifications, is subject to change without notice. NUCLEUS DATA RECOVERY.COM PRIVATE LIMITED provides no warranty with regard to this manual or any other information contained herein and here by expressly disclaims any implied warranties of merchantability or fitness for any particular purpose with regard to any of the foregoing NUCLEUS DATA RECOVERY.COM PRIVATE LIMITED assumes no liability for any damages incurred directly or indirectly from any technical or typographical errors or omissions contained herein or for discrepancies between the product and the manual. In no event shall NUCLEUS DATA RECOVERY.COM PRIVATE LIMITED, be liable for any incidental, consequential special, or exemplary damages, whether based on tort, contract or otherwise, arising out of or in connection with this manual or any other information contained herein or the use there of.

## 10.4 License Agreement

---

Kernel for BKF Copyright © by NUCLEUS DATA RECOVERY.COM PRIVATE LIMITED

### Your Agreement to this License

You should carefully read the following terms and conditions before using, installing or distributing this software, unless you have a different license agreement signed by NUCLEUS DATA RECOVERY.COM PRIVATE LIMITED. The terms and conditions of this License describe the permitted use and users of

each Licensed Copy of Kernel for BKF. For purposes of this License, if you have a valid license, you have the right to use a single Licensed Copy of Nucleus Kernel.

## **Scope of License**

Each Licensed Copy of Kernel for BKF may either be used by a single person or used non-simultaneously by multiple people who use the software personally installed on a single workstation. All rights of any kind in Nucleus Kernel, which are not expressly granted in this License, are entirely and exclusively reserved to and by NUCLEUS DATA RECOVERY.COM PRIVATE LIMITED. You may not rent, lease, modify, translate, reverse engineer, decompile, disassemble, or create derivative works based on, Nucleus Kernel, nor permit anyone else to do so. You may not make access to Nucleus Kernel available to others in connection with a service bureau, application service provider, or similar business, nor permit anyone else to do so.

## **Warranty Disclaimers and Liability Limitations**

Kernel for BKF, and any and all accompanying software, files, data and materials, are distributed and provided AS IS and with no warranties of any kind, whether expressed or implied. In particular, there is no warranty for the quality of data recovered. You acknowledge that good data processing procedure dictates that any program, including Nucleus Kernel, must be thoroughly tested with non-critical data before there is any reliance on it, and you hereby assume the entire risk of all use of the copies of Nucleus Kernel covered by this License. This disclaimer of warranty constitutes an essential part of this License. In addition, in no event does NUCLEUS DATA RECOVERY.COM PRIVATE LIMITED authorize you or anyone else to use Kernel for BKF in applications or systems where Kernel for BKF failure to perform can reasonably be expected to result in a significant physical injury, or in loss of life. Any such use is entirely at your own risk, and you agree to hold NUCLEUS DATA RECOVERY.COM PRIVATE LIMITED harmless from any and all claims or losses relating to such unauthorized use.

## **General**

This License is the complete statement of the agreement between the parties on the subject matter, and merges and supersedes all other or prior understandings, purchase orders, agreements and arrangements. This License shall be governed by the laws of the State of Delhi. Exclusive jurisdiction and venue for all matters relating to this License shall be in courts and for a located in the State of Delhi, and you consent to such jurisdiction and venue. There are no third party beneficiaries of any promises, obligations or representations made by NUCLEUS DATA RECOVERY.COM PRIVATE LIMITED herein.

Any waiver by NUCLEUS DATA RECOVERY.COM PRIVATE LIMITED of any violation of this License by you shall not constitute, nor contribute to, a waiver by NUCLEUS DATA RECOVERY.COM PRIVATE LIMITED of any other or future violation of the same provision, or any other provision, of this License.